

Rabbit Anti-CCL24 antibody

SL41393R

Product Name CCL24

Chinese Name 嗜酸粒细胞趋化蛋白 24 抗体

Alias Eotaxin 2; C-C motif chemokine 24; CKb-6; MPIF-2; SCYA24; Chemokine CC Motif Ligand 24; CK beta 6; Eotaxin2; Eotaxin-2; Ckb6; Eosinophil chemotactic protein 2; MPIF2; Myeloid Progenitor Inhibitory Factor 2; Small inducible cytokine subfamily A (Cys-Cys) member 24; CCL24_HUMAN; CK-beta-6; Small-inducible cytokine A24.

Immunogen Species Rabbit

Clonality Polyclonal

React Species Mouse, (predicted: Rat,)
WB=1:500-2000

Applications not yet tested in other applications.
optimal dilutions/concentrations should be determined by the end user.

Theoretical molecular weight 13kDa

Cellular localization cytoplasmic Secretory protein

Form Liquid

Concentration 1mg/ml

immunogen Recombinant mouse CCL24 protein: N-GST & C-His

Lsotype IgG

Purification affinity purified by Protein A

Buffer Solution 1M TBS(pH7.4) with 1% BSA, 3% Proclin300 and 50% Glycerol.

Storage Shipped at 4°C. Store at -20 °C for one year. Avoid repeated freeze/thaw cycles.

Attention This product as supplied is intended for research use only, not for use in human, therapeutic or diagnostic applications.

PubMed [PubMed](#)

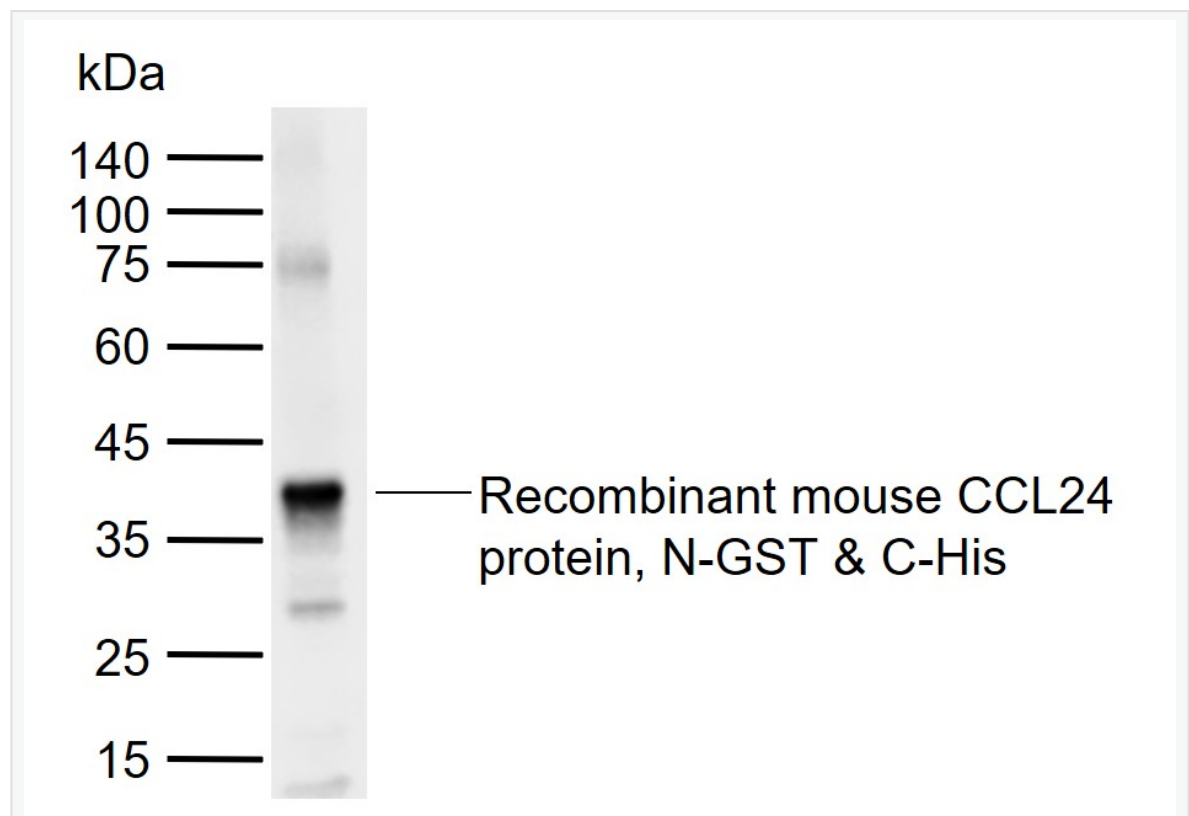
Product Detail This gene belongs to the subfamily of small cytokine CC genes. Cytokines are a family of secreted proteins involved in immunoregulatory and inflammatory processes. The CC

cytokines are proteins characterized by two adjacent cysteines. The cytokine encoded by this gene displays chemotactic activity on resting T lymphocytes, a minimal activity on neutrophils, and is negative on monocytes and activated T lymphocytes. The protein is also a strong suppressor of colony formation by a multipotential hematopoietic progenitor cell line. [provided by RefSeq, Jul 2008]

SWISS:
Q9JKC0

Gene ID:
56221

**Product
Picture**



Sample:

Lane 1: Recombinant mouse CCL24 protein, N-GST & C-His

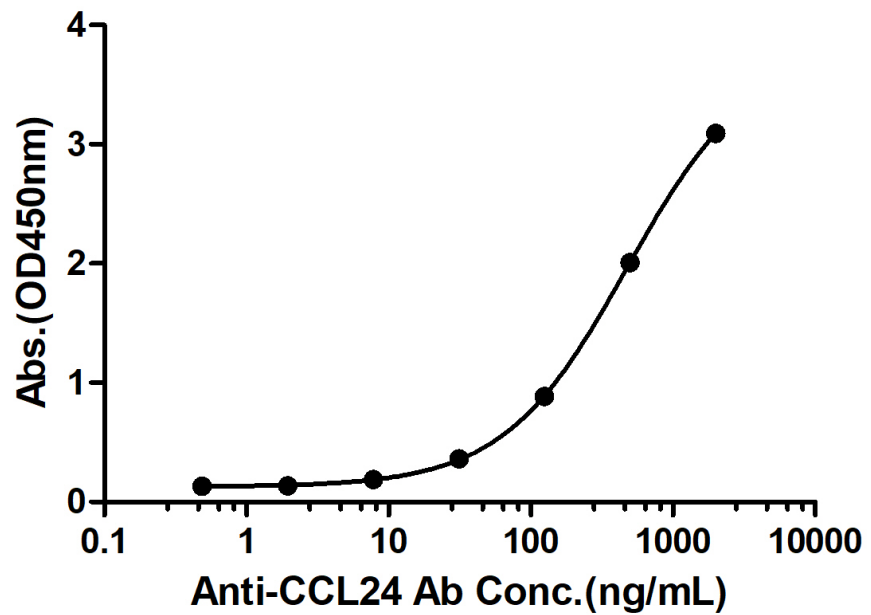
Primary: Anti-CCL24 (SL41393R) at 1/1000 dilution

Secondary: IRDye800CW Goat Anti-Rabbit IgG at 1/20000 dilution

Predicted band size: kDa

Observed band size: 36 kDa

Rabbit Anti-Mouse CCL24 Antibody Bind with Mouse CCL24 protein, His Tag



Measured by its binding ability in a indirect ELISA. Immobilized Mouse CCL24 protein, His Tag (Cat. SL41393P) at 2 μ g/mL (100 μ L/well) can bind Rabbit Anti-Mouse CCL24 Antibody, the EC50 is 475.7 ng/mL.