

## Rabbit Anti-HES1 antibody

SL41372R

<b>Product Name</b>	HES1
<b>Chinese Name</b>	转录因子 HES-1 抗体
<b>Alias</b>	bHLHb39; C-HAIRY1; c-hairy1A; Class B basic helix-loop-helix protein 39; FLJ20408; Hairy and enhancer of split 1 (Drosophila); Hairy and enhancer of split 1; Hairy Enhancer of Split 1; Hairy homolog (Drosophila); Hairy Homolog; Hairy like; Hairy, Drosophila, homolog of; Hairy-like protein; Hairy/enhancer of split, Drosophila, homolog of, 1; HAIRY1; HES-1; hes1; Hes1 hairy and enhancer of split 1 (Drosophila); HES1_HUMAN; HHL; HL; HRY; RHL; Transcription factor HES 1; Transcription factor HES-1.
<b>Research Area</b>	immunology Chromatin and nuclear signals Neurobiology transcriptional regulatory factor Epigenetics
<b>Immunogen Species</b>	Rabbit
<b>Clonality</b>	Polyclonal
<b>React Species</b>	Human, Rat, (predicted: Mouse, ) WB=1:500-2000,ELISA=1:5000-10000,ICC/IF=1:50-200
<b>Applications</b>	not yet tested in other applications. optimal dilutions/concentrations should be determined by the end user.
<b>Theoretical molecular weight</b>	30kDa
<b>Cellular localization</b>	The nucleus
<b>Form</b>	Liquid
<b>Concentration immunogen</b>	1mg/ml Recombinant human HES1 protein : 1-277/280
<b>Lsotype</b>	IgG
<b>Purification</b>	affinity purified by Protein A
<b>Buffer Solution</b>	1M TBS(pH7.4) with 1% BSA, 3% Proclin300 and 50% Glycerol.
<b>Storage</b>	Shipped at 4°C. Store at -20 °C for one year. Avoid repeated freeze/thaw cycles.
<b>Attention</b>	This product as supplied is intended for research use only, not for use in human, therapeutic or diagnostic applications.

**PubMed**

[PubMed](#)

Transcriptional repressor of genes that require a bHLH protein for their transcription. May act as a negative regulator of myogenesis by inhibiting the functions of MYOD1 and ASH1. Binds DNA on N-box motifs: 5'-CACNAG-3' with high affinity and on E-box motifs: 5'-CANNTG-3' with low affinity.

**SWISS:**

Q14469

**Gene ID:**

3280

**Database links:**

[Entrez Gene: 395128](#) Chicken

[Entrez Gene: 539547](#) Cow

[Entrez Gene: 3280](#) Human

[Entrez Gene: 15205](#) Mouse

**Product Detail**

[Entrez Gene: 100499567](#) Pig

[Entrez Gene: 29577](#) Rat

[Omim: 139605](#) Human

[SwissProt: O57337](#) Chicken

[SwissProt: Q3ZBG4](#) Cow

[SwissProt: Q14469](#) Human

[SwissProt: P35428](#) Mouse

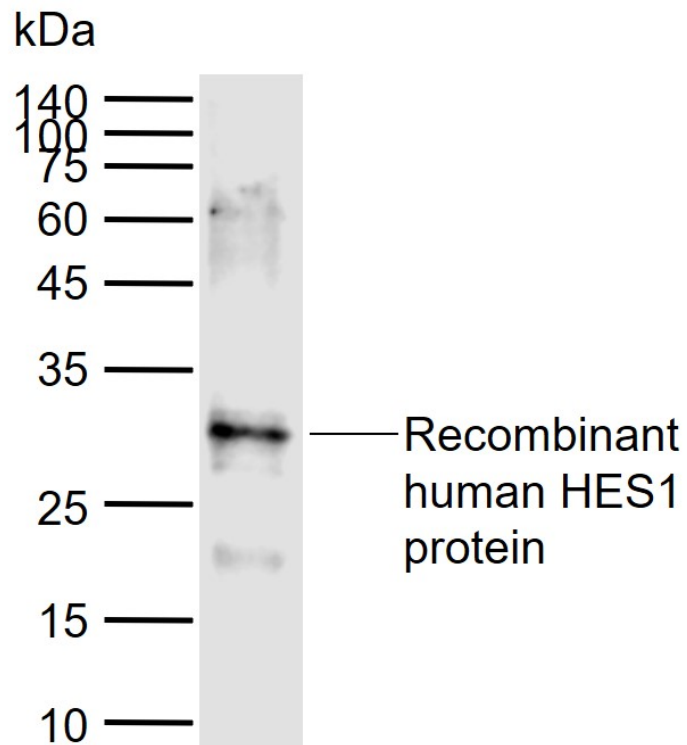
[SwissProt: Q04666](#) Rat

[Unigene: 250666](#) Human

[Unigene: 390859](#) Mouse

[Unigene: 19727](#) Rat

**Product Picture**



Sample:

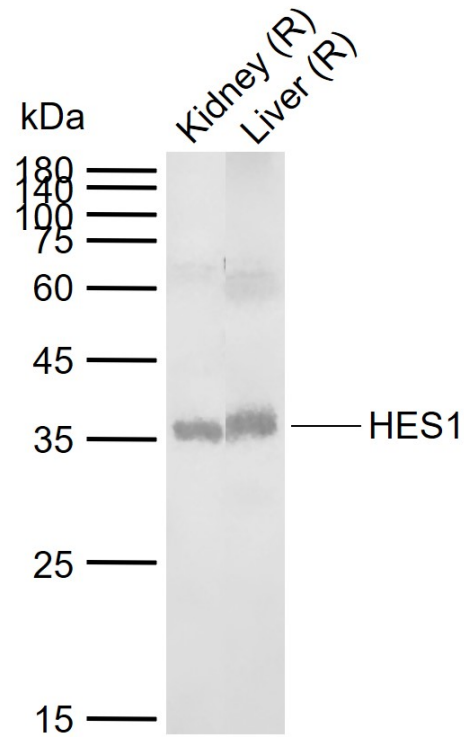
Lane 1: Recombinant human HES1 protein

Primary: Anti-HES1 (SL41372R) at 1/1000 dilution

Secondary: IRDye800CW Goat Anti-Rabbit IgG at 1/20000 dilution

Predicted band size: 30 kDa

Observed band size: 30 kDa



Sample:

Lane 1: Rat Kidney tissue lysates

Lane 2: Rat Liver tissue lysates

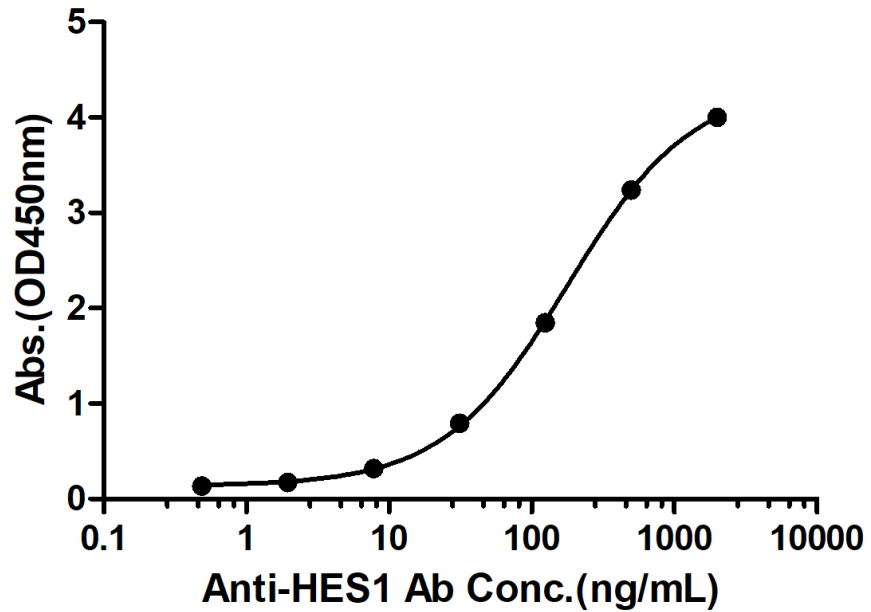
Primary: Anti-HES1 (SL41372R) at 1/1000 dilution

Secondary: IRDye800CW Goat Anti-Rabbit IgG at 1/20000 dilution

Predicted band size: 30 kDa

Observed band size: 35 kDa

### Rabbit Anti-Human HES1 Antibody Bind with Human HES1 protein, His Tag



Measured by its binding ability in a indirect ELISA. Immobilized Human HES1 protein, His Tag (Cat. SL41372P) at 2  $\mu\text{g/mL}$  (100  $\mu\text{L/well}$ ) can bind Rabbit Anti-Human HES1 Antibody, the EC50 is 178.8 ng/mL.