

Rabbit Anti-TMPRSS2 antibody

SL41361R

Product Name	TMPRSS2
Chinese Name	丝氨酸蛋白酶 10 抗体
Alias	Epitheliasin; PRSS10; Serine protease 10; TMPRSS2; TMPRSS2 ERG FUSION GENE, INCLUDED; TMPRSS2 ETV1 FUSION GENE, INCLUDED; TMPS2_HUMAN; Transmembrane protease serine 2 catalytic chain; Transmembrane protease, serine 2; Transmembrane protease, serine 2, EC 3.4.219; Transmembrane protease, serine 2, EC 3.4.219; D16ErtD61e.
Research Area	Tumour Cell biology Neurobiology Kinases and Phosphatases TumourCell biologyMaker
Immunogen Species	Rabbit
Clonality	Polyclonal
React Species	Human, (predicted: Mouse, Rat,) WB=1:500-2000,ELISA=1:5000-10000
Applications	not yet tested in other applications. optimal dilutions/concentrations should be determined by the end user.
Theoretical molecular weight	54kDa
Cellular localization	The cell membrane Secretory protein
Form	Liquid
Concentration	1mg/ml
immunogen	Recombinant human TMPRSS2 protein: 108-492/492 <Extracellular>
Lsotype	IgG
Purification	affinity purified by Protein A
Buffer Solution	1M TBS(pH7.4) with 1% BSA, 3% Proclin300 and 50% Glycerol.
Storage	Shipped at 4°C. Store at -20 °C for one year. Avoid repeated freeze/thaw cycles.
Attention	This product as supplied is intended for research use only, not for use in human, therapeutic or diagnostic applications.

PubMed

[PubMed](#)

Variants Proteins Primary Antibodies ELISAs Antibody Arrays Activity Assays
Proteins Antibodies Assays Genes shRNA Primers CRISPR Lentiviral Particles
CRISPR Knockout Kits gRNA KO Pools iPSC SNV Clone Free Bioinformatics
Tools C. elegans Transgenics Zebrafish Genome Editing Humanized animal
models Aliases for TMPRSS2 Gene Aliases for TMPRSS2 Gene GeneCards
Symbol: TMPRSS2 2 Transmembrane Serine Protease 2 2 3 5 PRSS10 2 3 4 5
Transmembrane Protease, Serine 2 2 3 Transmembrane Protease Serine 2 3 4
Serine Protease 10 3 4 EC 3.4.21.109 48 Epitheliasin 3 EC 3.4.21.- 4 EC 3.4.21 48
External Ids for TMPRSS2 Gene HGNC: 11876 NCBI Entrez Gene: 7113
Ensembl: ENSG00000184012 OMIM®: 602060 UniProtKB/Swiss-Prot: O15393
Previous GeneCards Identifiers for TMPRSS2 Gene GC21M039410
GC21M041757 GC21M041756 GC21M041750 GC21M042836 GC21M028305
Summaries for TMPRSS2 Gene Entrez Gene Summary for TMPRSS2 Gene This
gene encodes a protein that belongs to the serine protease family. The encoded
protein contains a type II transmembrane domain, a receptor class A domain, a
scavenger receptor cysteine-rich domain and a protease domain. Serine proteases
are known to be involved in many physiological and pathological processes. This
gene was demonstrated to be up-regulated by androgenic hormones in prostate
cancer cells and down-regulated in androgen-independent prostate cancer tissue.
The protease domain of this protein is thought to be cleaved and secreted into cell
media after autocleavage. This protein also facilitates entry of viruses into host
cells by proteolytically cleaving and activating viral envelope glycoproteins.
Viruses found to use this protein for cell entry include Influenza virus and the
human coronaviruses HCoV-229E, MERS-CoV, SARS-CoV and SARS-CoV-2
(COVID-19 virus). Alternatively spliced transcript variants encoding different
isoforms have been found for this gene. [provided by RefSeq, Apr 2020]

Product Detail

SWISS:
O15393

Gene ID:
7113

Database links:

[Entrez Gene: 7113](#) Human

[Entrez Gene: 50528](#) Mouse

[Entrez Gene: 156435](#) Rat

[Omim: 602060](#) Human

[SwissProt: O15393](#) Human

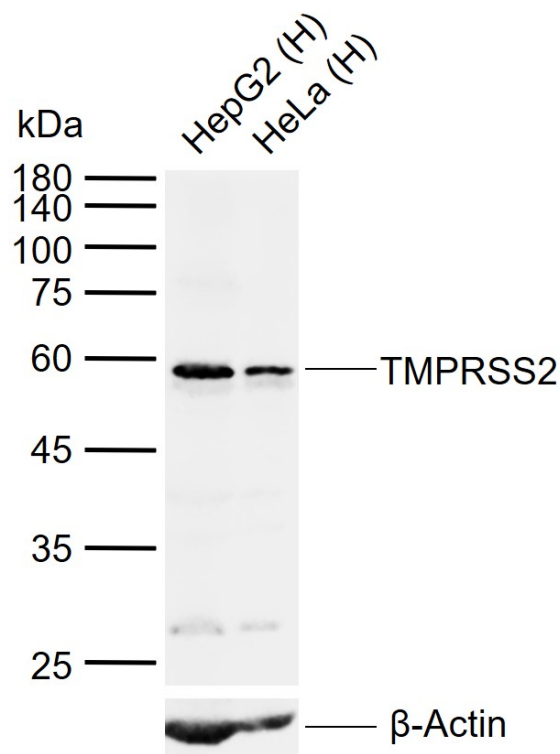
[SwissProt: Q9JIQ8](#) Mouse

[Unigene: 439309](#) Human

[Unigene: 276145](#) Mouse

[Unigene: 81082](#) Rat

**Product
Picture**



Sample:

Lane 1: Human HepG2 cell lysates

Lane 2: Human HeLa cell lysates

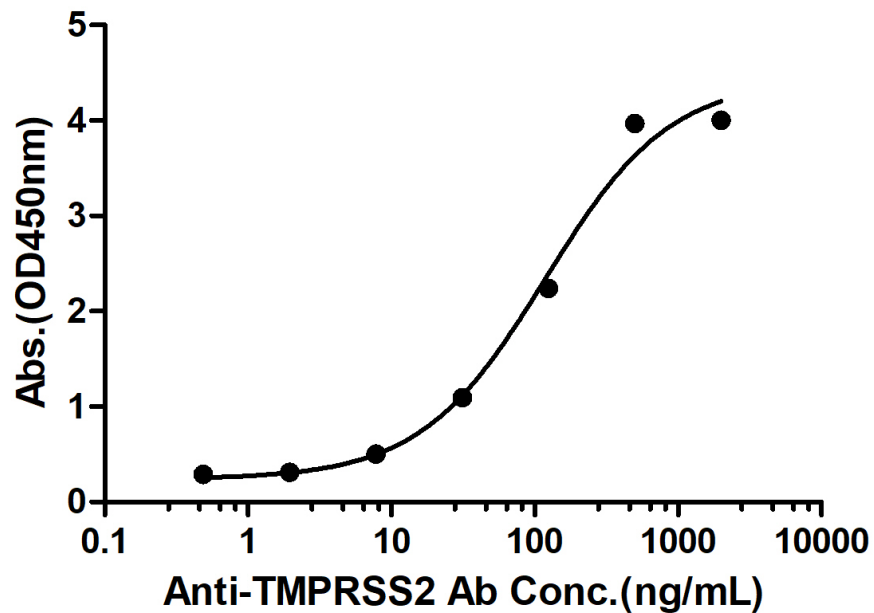
Primary: Anti-TMPRSS2 (SL41361R) at 1/1000 dilution

Secondary: IRDye800CW Goat Anti-Rabbit IgG at 1/20000 dilution

Predicted band size: 54 kDa

Observed band size: 58 kDa

Rabbit Anti-Human TMPRSS2 Antibody Bind with Human TMPRSS2 protein, His Tag



Measured by its binding ability in a indirect ELISA. Immobilized Human TMPRSS2 protein, His Tag (Cat. SL41361P) at 2 $\mu\text{g/mL}$ (100 $\mu\text{L/well}$) can bind Rabbit Anti-Human TMPRSS2 Antibody, the EC50 is 118.5 ng/mL.