



Rabbit Anti-SLC10A2 antibody

SL41358R

Product Name SLC10A2**Chinese Name** 顶膜钠依赖性胆盐转运体蛋白抗体**Alias**

SLC10A2; Apical sodium dependent bile acid transporter; Apical sodium- dependent bile acid transporter; Ileal sodium dependent bile acid transporter; Ileal sodium-dependent bile acid transporter; Ileal sodium/bile acid cotransporter; ISBT; Na⁺ bile acid cotransporter; Na⁺ dependent ileal bile acid transporter; NTCP2; Sodium/taurocholate cotransporting polypeptide, ileal; solute carrier family 10 (sodium/bile acid cotransporter family); Solute carrier family 10 member 2.

Research Area

Tumour immunology Signal transduction Channel protein

Immunogen Species

Rabbit

Clonality

Polyclonal

React Species

Human, Mouse, (predicted: Rat,)

WB=1:500-2000,IHC-P=1:100-500,IHC-F=1:400-800,IF=1:100-500,ELISA=1:5000-10000

Applications

(Paraffin sections need antigen repair)

not yet tested in other applications.

optimal dilutions/concentrations should be determined by the end user.

Theoretical molecular weight

38kDa

Cellular localization

The cell membrane

Form

Liquid

Concentration 1mg/ml**immunogen**

Recombinant mouse SLC10A2 protein: 306-348/348 <Cytoplasmic>

Lsotype

IgG

Purification

affinity purified by Protein A

Buffer Solution

1M TBS(pH7.4) with 1% BSA, 3% Proclin300 and 50% Glycerol.

Storage

Shipped at 4°C. Store at -20 °C for one year. Avoid repeated freeze/thaw cycles.



Attention

This product as supplied is intended for research use only, not for use in human, therapeutic or diagnostic applications.

PubMed

[PubMed](#)

SLC10A2 plays a critical role in reabsorption of bile acids from the the small intestine lumen. Passive flow of sodium ions down their concentration gradient is coupled to bile acid movement, resulting in an increase in the concentration of bile acids in the interior of the cell. This action conserves the body's pool of re-circulating bile acid. SLC10A2 also plays a key role in cholesterol metabolism as cholesterol is the precursor molecule in bile acid synthesis mediated by CYP7A and FXR.

SWISS:
Q12908

Gene ID:
6555

Database links:

**Product
Detail**

[Entrez Gene: 6555](#) Human

[Entrez Gene: 20494](#) Mouse

[Entrez Gene: 29500](#) Rat

[Omim: 601295](#) Human

[SwissProt: Q12908](#) Human

[SwissProt: P70172](#) Mouse

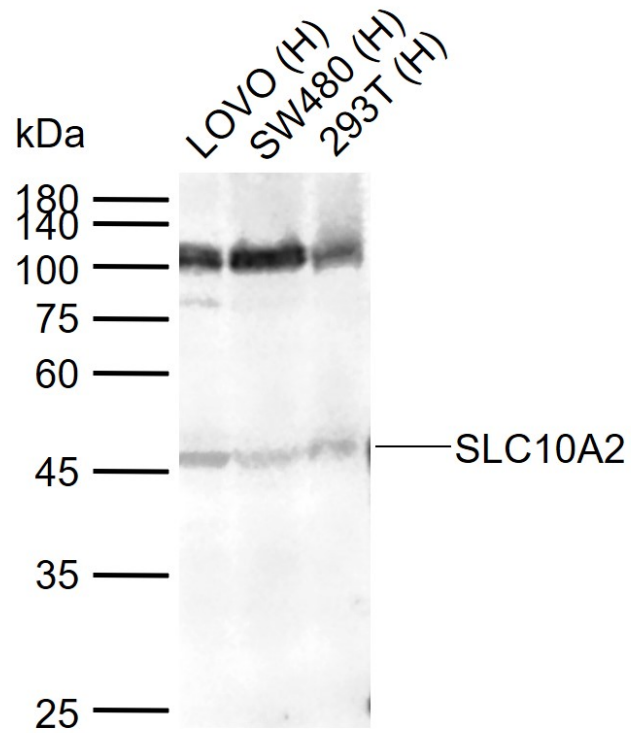
[SwissProt: Q62633](#) Rat

[Unigene: 194783](#) Human

[Unigene: 3500](#) Mouse

[Unigene: 85891](#) Rat

**Product
Picture**



Sample:

Lane 1: Human LOVO cell lysates

Lane 2: Human SW480 cell lysates

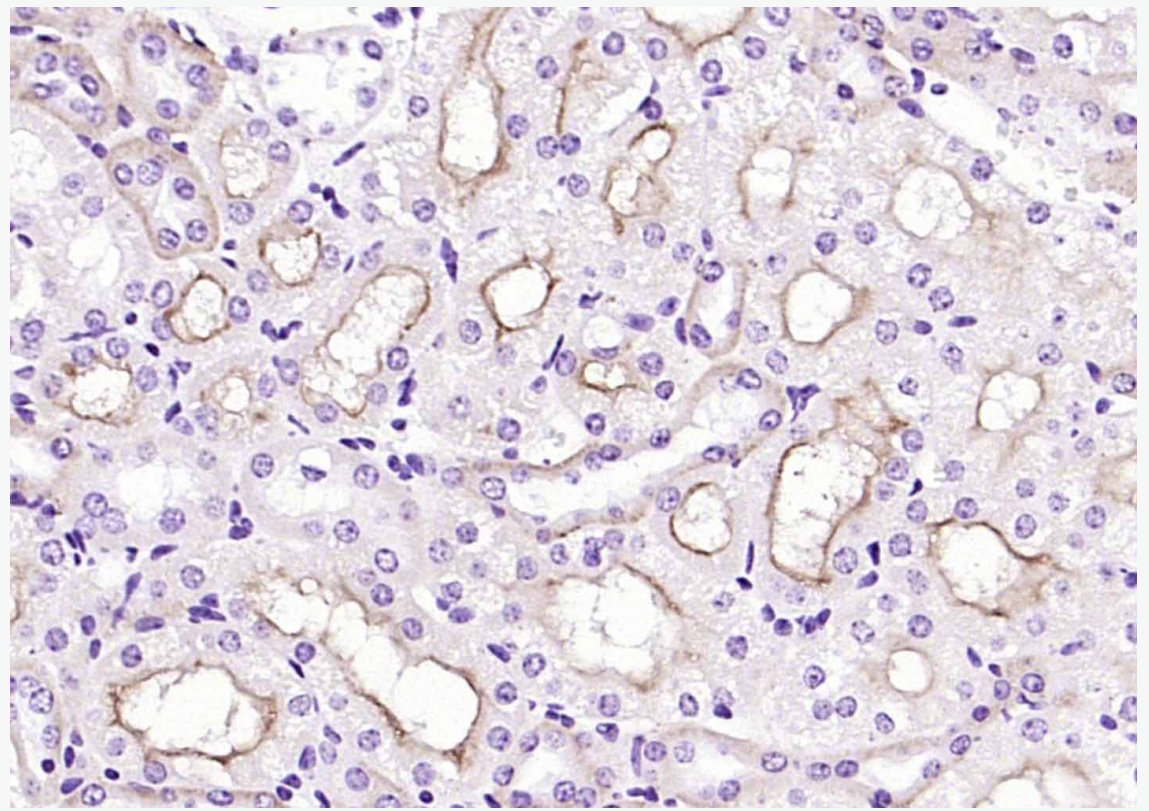
Lane 3: Human 293T cell lysates

Primary: Anti-SLC10A2 (SL41358R) at 1/1000 dilution

Secondary: IRDye800CW Goat Anti-Rabbit IgG at 1/20000 dilution

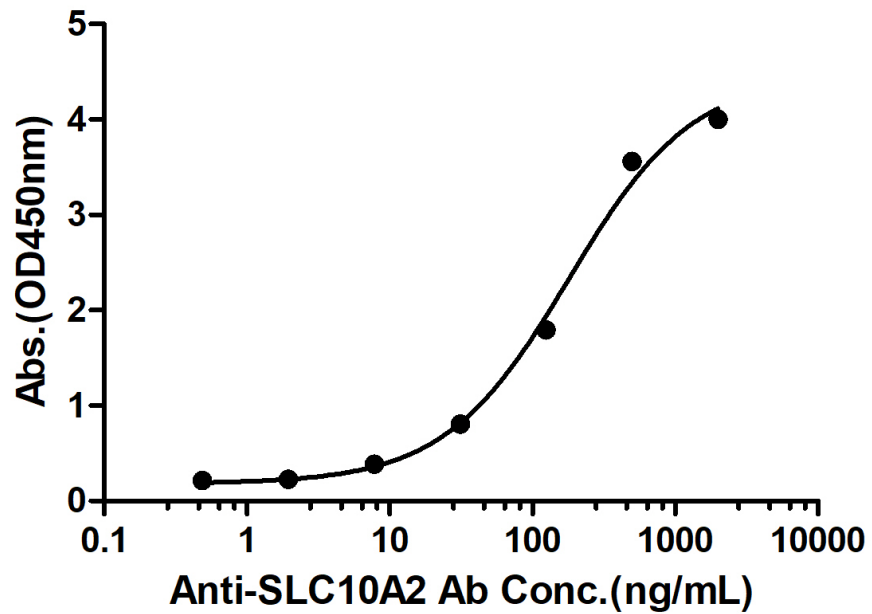
Predicted band size: 38 kDa

Observed band size: 46 kDa



Paraformaldehyde-fixed, paraffin embedded (mouse kidney); Antigen retrieval by boiling in sodium citrate buffer (pH6.0) for 15min; Block endogenous peroxidase by 3% hydrogen peroxide for 20 minutes; Blocking buffer (normal goat serum) at 37°C for 30min; Antibody incubation with (SLC10A2) Polyclonal Antibody, Unconjugated (SL41358R) at 1:200 overnight at 4°C, followed by operating according to SP Kit(Rabbit) (sp-0023) instructions and DAB staining.

Rabbit Anti-Mouse SLC10A2 Antibody Bind with Mouse SLC10A2 protein, His Tag



Measured by its binding ability in a indirect ELISA. Immobilized Mouse SLC10A2 protein, His Tag (Cat. SL41358P) at 2 $\mu\text{g/mL}$ (100 $\mu\text{L/well}$) can bind Rabbit Anti-Mouse SLC10A2 Antibody, the EC50 is 179.9 ng/mL.