



SUNLONG

SunLong Biotech Co.,LTD

Tel: 0086-571-56623320 Fax:0086-571-56623318

E-mail:sales@sunlongbiotech.com

www.sunlongbiotech.com

Rabbit Anti-IL-20R alpha antibody

SL41355R

Product Name IL-20R alpha

Chinese Name 白介素 20 受体 α 链抗体

Alias IL-20R α ; Interleukin-20 receptor alpha chain precursor;IL-20RA; IL20 RA; IL-20 RA; E230031K19; FLJ40993; IL-20R1; IL20RA; ZCYTOR7;Interleukin-20 receptor subunit alpha; IL-20 receptor subunit alpha; IL-20R-alpha; IL-20RA; Cytokine receptor family 2 member 8; CRF2-8; Cytokine receptor class-II member 8; I20RA_HUMAN.

Research Area Cell biology immunology Cell Surface Molecule

Immunogen Species Rabbit

Clonality Polyclonal

React Species Human,Mouse(predicted:Rat)
WB=1:500-2000,ELISA=1:5000-10000

Applications not yet tested in other applications.
optimal dilutions/concentrations should be determined by the end user.

Theoretical molecular weight 59kDa

Cellular localization The cell membrane

Form Liquid

Concentration 1mg/ml

immunogen Recombinant mouse IL-20R alpha protein: 30-250/546

Lsotype IgG

Purification affinity purified by Protein A

Buffer Solution Human,Mouse(predicted:Rat)1M TBS(pH7.4) with 1% BSA,
Human,Mouse(predicted:Rat)3% Proclin300 and 50% Glycerol.

Storage Shipped at 4°C. Store at -20 °C for one year. Avoid repeated freeze/thaw cycles.

Attention This product as supplied is intended for research use only, not for use in human, therapeutic or diagnostic applications.

PubMed

[PubMed](#)

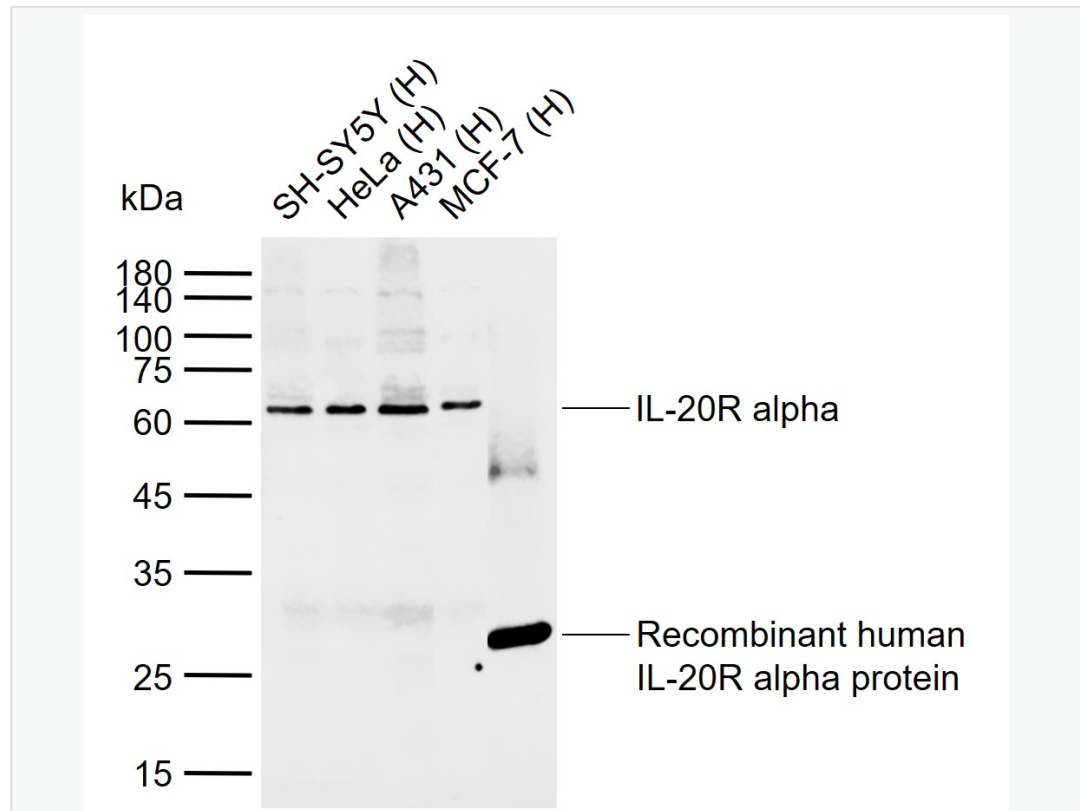
The protein encoded by this gene is a receptor for interleukin 20 (IL20), a cytokine that may be involved in epidermal function. The receptor of IL20 is a heterodimeric receptor complex consisting of this protein and interleukin 20 receptor beta (IL20B). This gene and IL20B are highly expressed in skin. The expression of both genes is found to be upregulated in Psoriasis. [provided by RefSeq]

Product Detail

SWISS:
Q6PHB0

Gene ID:
237313

Product Picture



Sample:

Lane 1: Human SH-SY5Y tissue lysates

Lane 2: Human HeLa tissue lysates

Lane 3: Human A431 tissue lysates

Lane 4: Human MCF-7 tissue lysates

Lane 5: Recombinant human IL-20R alpha protein

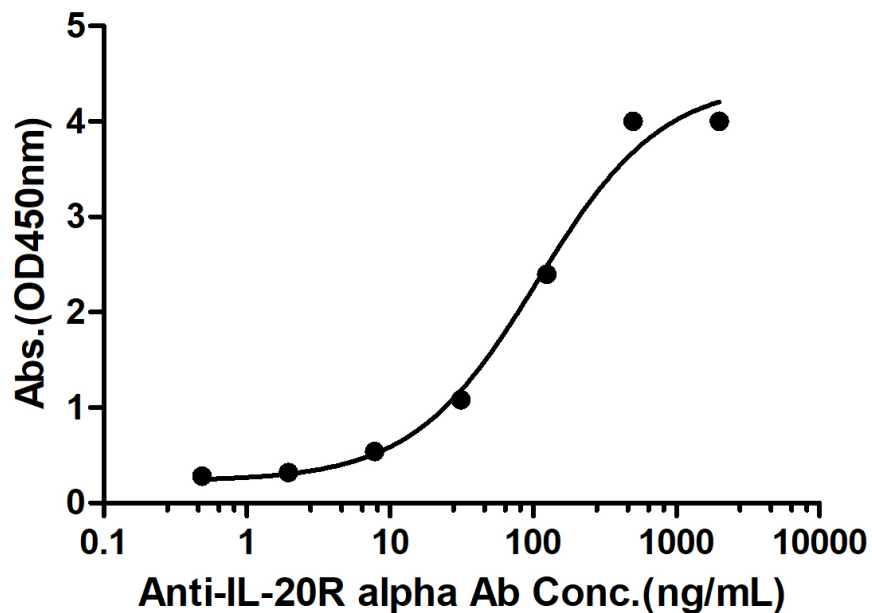
Primary: Anti-IL-20R alpha (SL41355R) at 1/1000 dilution

Secondary: IRDye800CW Goat Anti-Rabbit IgG at 1/20000 dilution

Predicted band size: 59 kDa

Observed band size: 62,27.6 kDa

Rabbit Anti-Mouse IL-20R alpha Antibody Bind with Mouse IL-20R alpha protein, His Tag



Measured by its binding ability in a indirect ELISA. Immobilized Mouse IL-20R alpha protein, His Tag (Cat. SL41355P) at 2 μ g/mL (100 μ L/well) can bind Rabbit Anti-Mouse IL-20R alpha Antibody, the EC50 is 107.4 ng/mL.



SunLong Biotech Co.,LTD
Tel: 0086-571-56623320 Fax:0086-571-56623318
E-mail:sales@sunlongbiotech.com
www.sunlongbiotech.com
