

## Rabbit Anti-IL-20R alpha antibody

SL41354R

**Product Name** IL-20R alpha

**Chinese Name** 白介素 20 受体  $\alpha$  链抗体

**Alias** IL-20R $\alpha$ ; Interleukin-20 receptor alpha chain precursor;IL-20RA; IL20 RA; IL-20 RA; E230031K19; FLJ40993; IL-20R1; IL20RA; ZCYTOR7;Interleukin-20 receptor subunit alpha; IL-20 receptor subunit alpha; IL-20R-alpha; IL-20RA; Cytokine receptor family 2 member 8; CRF2-8; Cytokine receptor class-II member 8; I20RA\_HUMAN.

**Research Area** Cell biology immunology The cell membrane 受体 Cell Surface Molecule

**Immunogen Species** Rabbit

**Clonality** Polyclonal

**React Species** Human, Mouse, Rat,  
WB=1:500-2000,ELISA=1:5000-10000

**Applications** not yet tested in other applications.  
optimal dilutions/concentrations should be determined by the end user.

**Theoretical molecular weight** 59kDa

**Cellular localization** The cell membrane

**Form** Liquid

**Concentration** 1mg/ml

**immunogen** Recombinant human IL-20R alpha protein: 30-250/553

**Lsotype** IgG

**Purification** affinity purified by Protein A

**Buffer Solution** 1M TBS(pH7.4) with 1% BSA, 3% Proclin300 and 50% Glycerol.

**Storage** Shipped at 4°C. Store at -20 °C for one year. Avoid repeated freeze/thaw cycles.

**Attention** This product as supplied is intended for research use only, not for use in human, therapeutic or diagnostic applications.

**PubMed**

[PubMed](#)

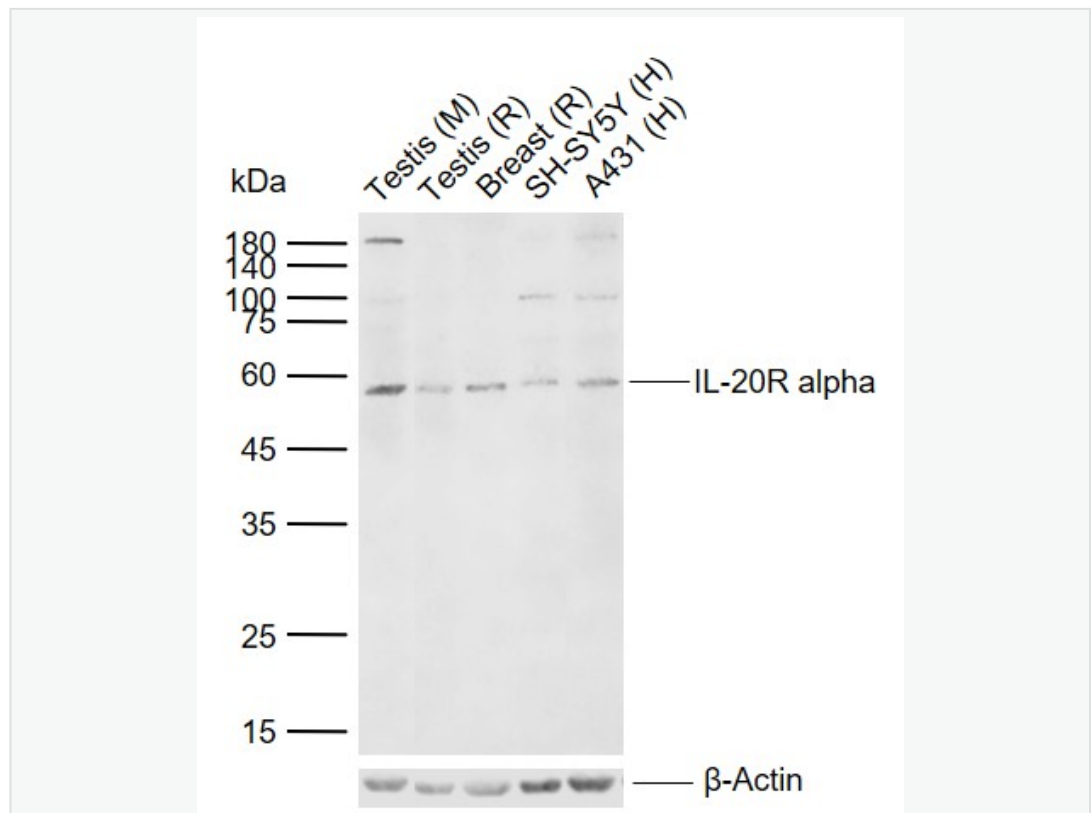
The protein encoded by this gene is a receptor for interleukin 20 (IL20), a cytokine that may be involved in epidermal function. The receptor of IL20 is a heterodimeric receptor complex consisting of this protein and interleukin 20 receptor beta (IL20B). This gene and IL20B are highly expressed in skin. The expression of both genes is found to be upregulated in Psoriasis. [provided by RefSeq]

**Product Detail**

**SWISS:**  
Q9UHF4

**Gene ID:**  
53832

**Product Picture**



Sample:

Lane 1: Mouse Testis tissue lysates

Lane 2: Rat Testis tissue lysates

Lane 3: Rat Breast tissue lysates

Lane 4: Human SH-SY5Y cell lysates

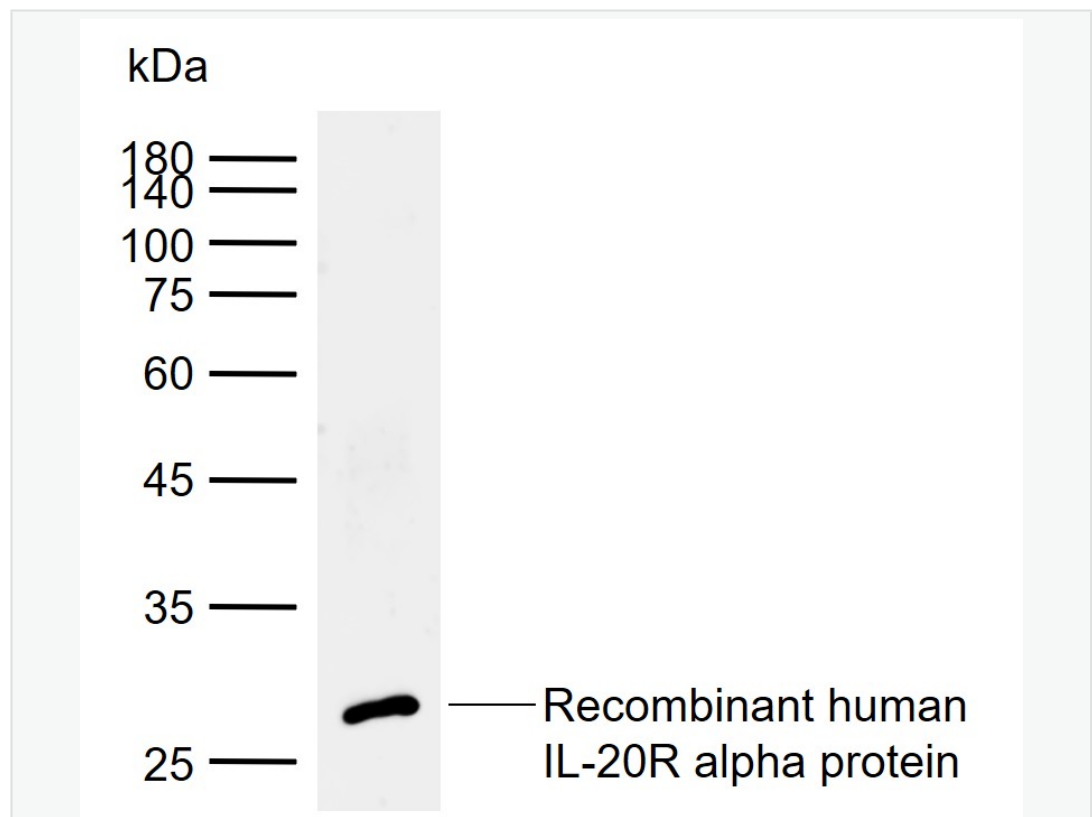
Lane 5: Human A431 cell lysates

Primary: Anti-IL-20R alpha (SL41354R) at 1/1000 dilution

Secondary: IRDye800CW Goat Anti-Rabbit IgG at 1/20000 dilution

Predicted band size: 59 kDa

Observed band size: 59 kDa



Sample:

Lane 1: Recombinant human IL-20R alpha protein

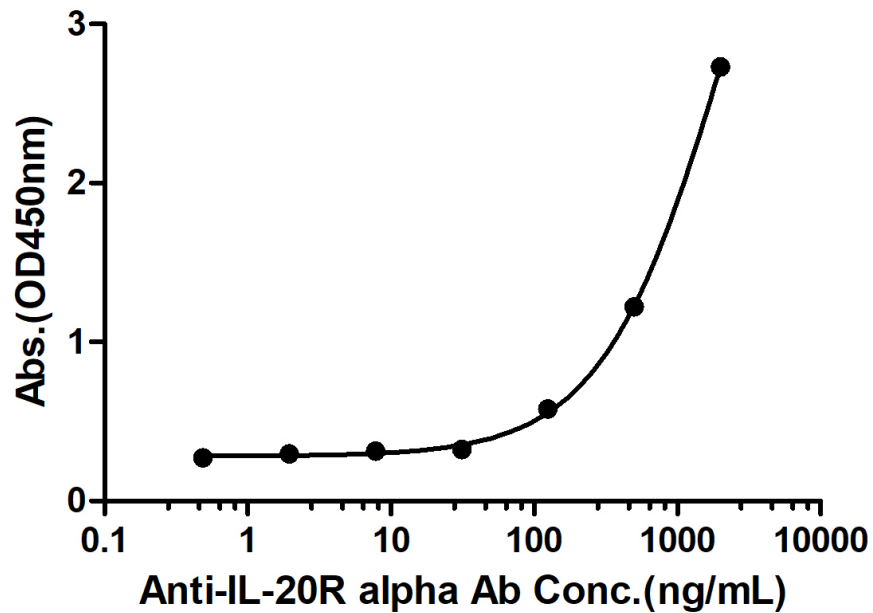
Primary: Anti-IL-20R alpha (SL41354R) at 1/1000 dilution

Secondary: IRDye800CW Goat Anti-Rabbit IgG at 1/20000 dilution

Predicted band size: 59 kDa

Observed band size: 28 kDa

### Rabbit Anti-Human IL-20R alpha Antibody Bind with Human IL-20R alpha protein, His Tag



Measured by its binding ability in a indirect ELISA. Immobilized Human IL-20R alpha protein, His Tag (Cat. SL41354P) at 2  $\mu$ g/mL (100  $\mu$ L/well) can bind Rabbit Anti- Human IL-20R alpha Antibody, the EC50 is 2249 ng/mL.