

Rabbit Anti-GLUT1 antibody

SL41338R

Product Name	GLUT1
Chinese Name	葡萄糖 Transporter1 抗体
Alias	Glucose Transporter GLUT1; GT-1; GLUT-1; GLUT 1; Solute carrier family 2; facilitated glucose transporter member 1; Glucose transporter type 1; erythrocyte/brain; DYT17; DYT18; Erythrocyte/brain HepG2 glucose transporter; Erythrocyte/hepatoma glucose transporter; Glucose transporter 1; Glucose transporter type 1; Glucose transporter type 1 erythrocyte/brain; Glucose transporter type 1, erythrocyte/brain; GLUT; GLUT1; GLUT1DS; GLUTB; GT1; GTG1; Gtg3; GTR1_HUMAN; HepG2 glucose transporter; MGC141895; MGC141896; PED; RATGTG1; SLC2A 1; SLC2A1; Solute carrier family 2 (facilitated glucose transporter), member 1; Solute carrier family 2 facilitated glucose transporter member 1.
Research Area	Tumour immunology Growth factors and hormones Transporter
Immunogen Species	Rabbit
Clonality	Polyclonal
React Species	Human Mouse Rat
Applications	WB=1:500-2000,ELISA=1:5000-10000 not yet tested in other applications. optimal dilutions/concentrations should be determined by the end user.
Theoretical molecular weight	54kDa
Cellular localization	The cell membrane Extracellular matrix
Form	Liquid
Concentration	1mg/ml
immunogen	Recombinant human GLUT1 protein: 216-280/492
Lsotype	IgG
Purification	affinity purified by Protein A
Buffer Solution	Human,Mouse,Rat1M TBS(pH7.4) with 1% BSA, Human,Mouse,Rat3% Proclin300 and 50% Glycerol.
Storage	Shipped at 4°C. Store at -20 °C for one year. Avoid repeated freeze/thaw

cycles.

Attention

This product as supplied is intended for research use only, not for use in human, therapeutic or diagnostic applications.

PubMed

[PubMed](#)

This gene encodes a major glucose transporter in the mammalian blood-brain barrier. Mutations in this gene have been found in a family with paroxysmal exertion-induced dyskinesia. [provided by RefSeq, Jul 2008].

SWISS:

P11166

Gene ID:

6513

Database links:

[Entrez Gene: 6513](#) Human

[Entrez Gene: 20525](#) Mouse

[Entrez Gene: 24778](#) Rat

[Omid: 138140](#) Human

[SwissProt: P11166](#) Human

[SwissProt: P17809](#) Mouse

[SwissProt: P11167](#) Rat

[Unigene: 473721](#) Human

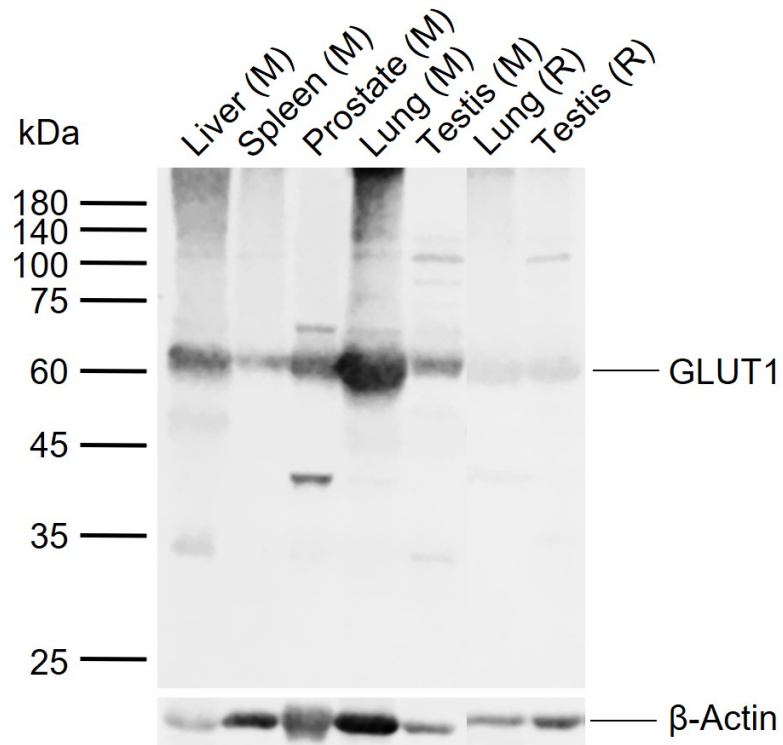
[Unigene: 721551](#) Human

[Unigene: 21002](#) Mouse

[Unigene: 3205](#) Rat

Product Detail

Product Picture



Sample:

Lane 1: Mouse Liver tissue lysates

Lane 2: Mouse Spleen tissue lysates

Lane 3: Mouse Prostate tissue lysates

Lane 4: Mouse Lung tissue lysates

Lane 5: Mouse Testis tissue lysates

Lane 6: Rat Lung tissue lysates

Lane 7: Rat Testis tissue lysates

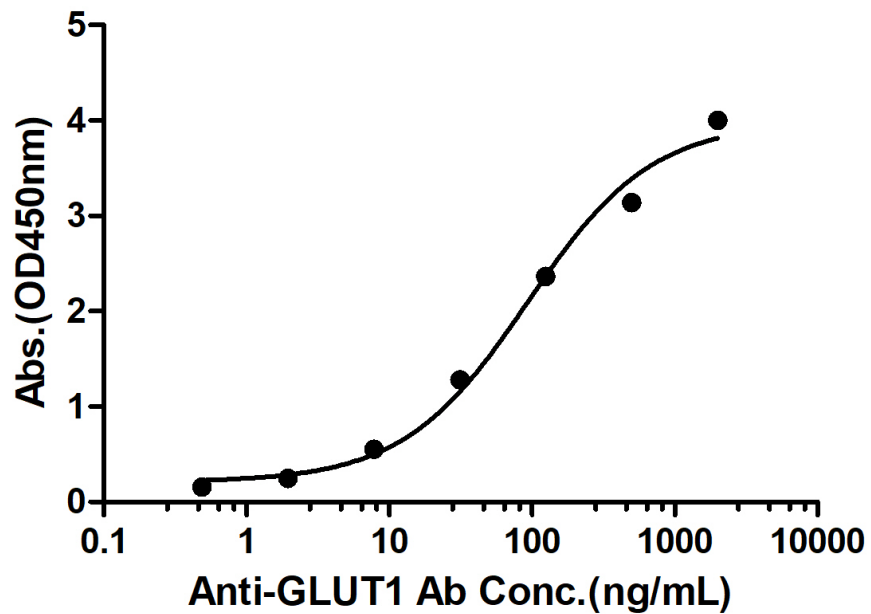
Primary: Anti-GLUT1 (SL41338R) at 1/1000 dilution

Secondary: IRDye800CW Goat Anti-Rabbit IgG at 1/20000 dilution

Predicted band size: 54 kDa

Observed band size: 60 kDa

Rabbit Anti-Human GLUT1 Antibody Bind with Human GLUT1 protein, GST & His Tag



Measured by its binding ability in a indirect ELISA. Immobilized Human GLUT1 protein, His Tag (Cat. SL41338P) at 2 $\mu\text{g}/\text{mL}$ (100 $\mu\text{L}/\text{well}$) can bind Rabbit Anti-Human GLUT1 Antibody, the EC_{50} is 93.26 ng/mL .