

## Rabbit Anti-PGC antibody

SL41229R

**Product Name** PGC

**Chinese Name** 胃蛋白酶原 2 抗体

**Alias** PEPC\_HUMAN; Gastricsin; EC:3.4.23.3; Pepsinogen C; PEPC; PGII; progastricsin; Pepsinogen II;

**Research Area** Tumour Signal transduction TumourCell biologyMaker

**Immunogen Species** Rabbit

**Clonality** Polyclonal

**React Species** Human, Mouse,  
WB=1:500-2000

**Applications** not yet tested in other applications.  
optimal dilutions/concentrations should be determined by the end user.

**Theoretical molecular weight** 42kDa

**Cellular localization** Secretory protein

**Form** Liquid

**Concentration** 1mg/ml

**immunogen** Recombinant human Pepsinogen II: 16-388

**Lsotype** IgG

**Purification** affinity purified by Protein A

**Buffer Solution** 1M TBS(pH7.4) with 1% BSA, 3% Proclin300 and 50% Glycerol.

**Storage** Shipped at 4°C. Store at -20 °C for one year. Avoid repeated freeze/thaw cycles.

**Attention** This product as supplied is intended for research use only, not for use in human, therapeutic or diagnostic applications.

**PubMed** [PubMed](#)

**Product Detail** This gene encodes an aspartic proteinase that belongs to the peptidase family A1. The encoded protein is a digestive enzyme that is produced in the stomach and constitutes a major component of the gastric mucosa. This protein is also secreted into the serum. This protein is synthesized as

an inactive zymogen that includes a highly basic prosegment. This enzyme is converted into its active mature form at low pH by sequential cleavage of the prosegment that is carried out by the enzyme itself. Polymorphisms in this gene are associated with susceptibility to gastric cancers. Serum levels of this enzyme are used as a biomarker for certain gastric diseases including Helicobacter pylori related gastritis. Alternate splicing results in multiple transcript variants. A pseudogene of this gene is found on chromosome 1. [provided by RefSeq, Oct 2009]

**Function:**

Hydrolyzes a variety of proteins.

**Subcellular Location:**

Secreted.

**Similarity:**

Belongs to the peptidase A1 family.

**SWISS:**

P20142

**Gene ID:**

5225

**Database links:**

[Entrez Gene: 5225](#) Human

[Entrez Gene: 24864](#) Rat

[Omim: 169740](#) Human

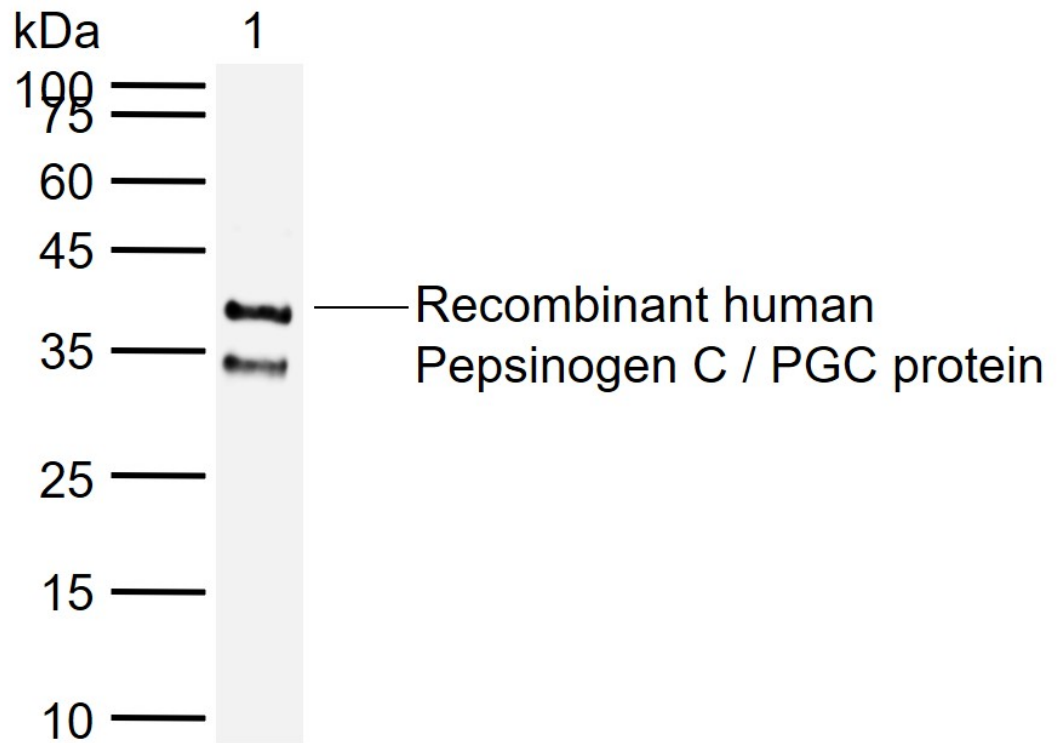
[SwissProt: P20142](#) Human

[SwissProt: P04073](#) Rat

[Unigene: 1867](#) Human

[Unigene: 9735](#) Rat

Product  
Picture



Sample:

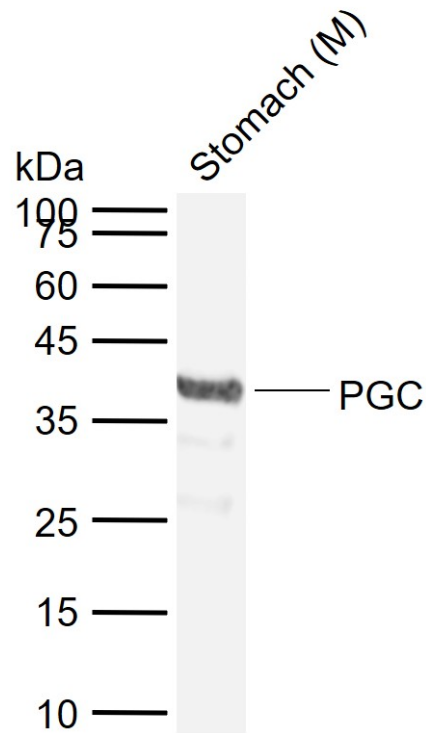
Lane 1: Recombinant human Pepsinogen C / PGC protein, His

Primary: Anti-PGC (SL41229R) at 1/1000 dilution

Secondary: IRDye800CW Goat Anti-Rabbit IgG at 1/20000 dilution

Predicted band size: 42 kDa

Observed band size: 38 kDa



Sample:

Lane 1: Mouse Stomach tissue lysates

Primary: Anti-PGC (SL41229R) at 1/1000 dilution

Secondary: IRDye800CW Goat Anti-Rabbit IgG at 1/20000 dilution

Predicted band size: 42 kDa

Observed band size: 39 kDa