

Rabbit Anti-Ly-6G antibody

SL41202R

Product Name	Ly-6G
Chinese Name	lymphocyte 抗原 6G 抗体
Alias	Gr-1; Gr1; Ly 6G; Ly-6G.1; Ly6G; lymphocyte antigen 6 complex locus G; Lymphocyte antigen 6G; LY6G_MOUSE.
Research Area	Cell biology immunology Stem cells Cell Surface Molecule
Immunogen Species	Rabbit
Clonality	Polyclonal
React Species	Mouse, WB=1:500-2000
Applications	not yet tested in other applications. optimal dilutions/concentrations should be determined by the end user.
Theoretical molecular weight	14kDa
Cellular localization	The cell membrane
Form	Liquid
Concentration	1mg/ml
immunogen	Recombinant mouse Ly-6G
Lsotype	IgG
Purification	affinity purified by Protein A
Buffer Solution	1M TBS(pH7.4) with 1% BSA, 3% Proclin300 and 50% Glycerol.
Storage	Shipped at 4°C. Store at -20 °C for one year. Avoid repeated freeze/thaw cycles.
Attention	This product as supplied is intended for research use only, not for use in human, therapeutic or diagnostic applications.
PubMed	PubMed
Product Detail	Ly6G is a GPI-anchored protein, that is also known as the myeloid differentiation antigen Gr1. The antigen is transiently expressed on monocytes in the bone marrow. The level of antigen expression in the bone marrow directly correlates with granulocyte differentiation and maturation. Ly6G is

expressed predominantly on neutrophils, also in a subset of eosinophils, differentiating pre-monocytes, and plasmacytoid dendritic cells.

Subcellular Location:

Cell membrane; Lipid-anchor, GPI-anchor (By similarity).

Tissue Specificity:

Expressed in bone marrow.

Similarity:

Contains 1 UPAR/Ly6 domain.

SWISS:

P35461

Gene ID:

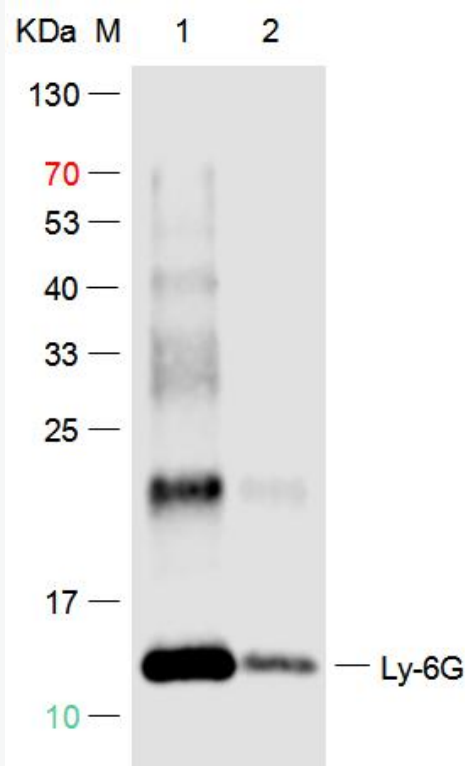
546644

Database links:

[Entrez Gene: 546644](#) Mouse

[SwissProt: P35461](#) Mouse

Product Picture



Sample:

Lane 1:Recombinant Mouse Ly-6G Protein at 500ng

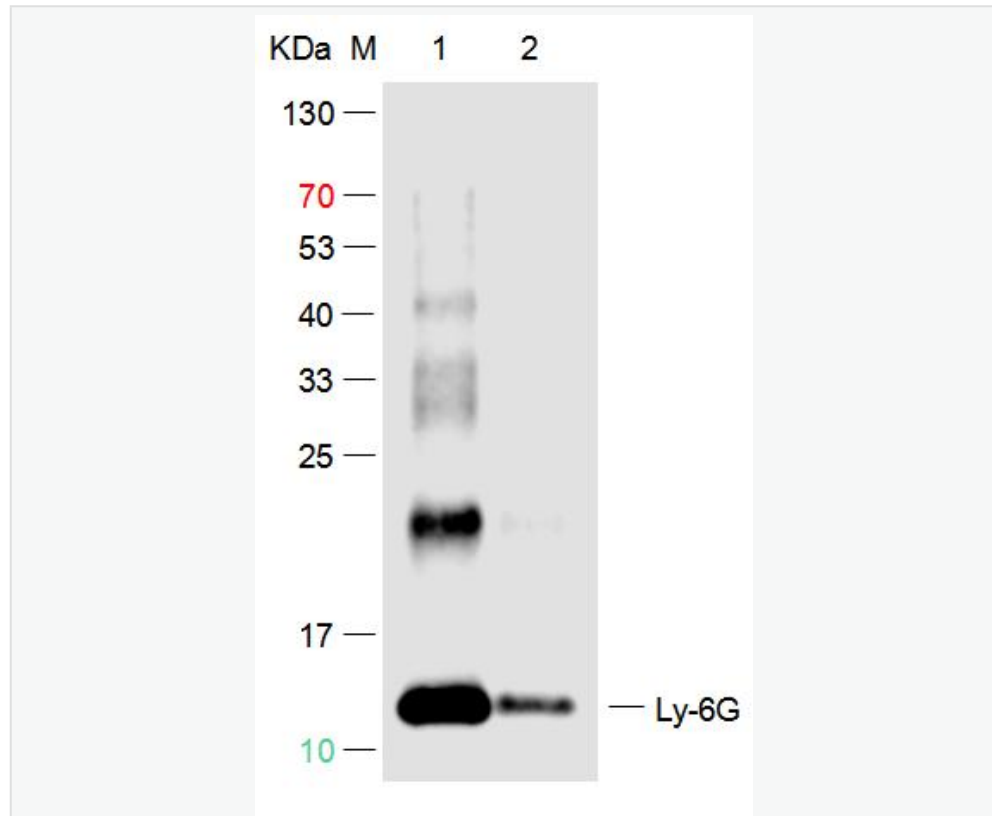
Lane 2:Recombinant Mouse Ly-6G Protein at 50ng

Primary: Rabbit Anti-Ly-6G Polyclonal Antibody at 1/1000 dilution
(Cat.SL41202R)

Secondary: IRDye800CW Goat Anti-Rabbit IgG at 1/20000 dilution

Predicted band size: 14kD

Observed band size: 13kD



Sample:

Lane 1:Recombinant Mouse Ly-6G Protein at 500ng

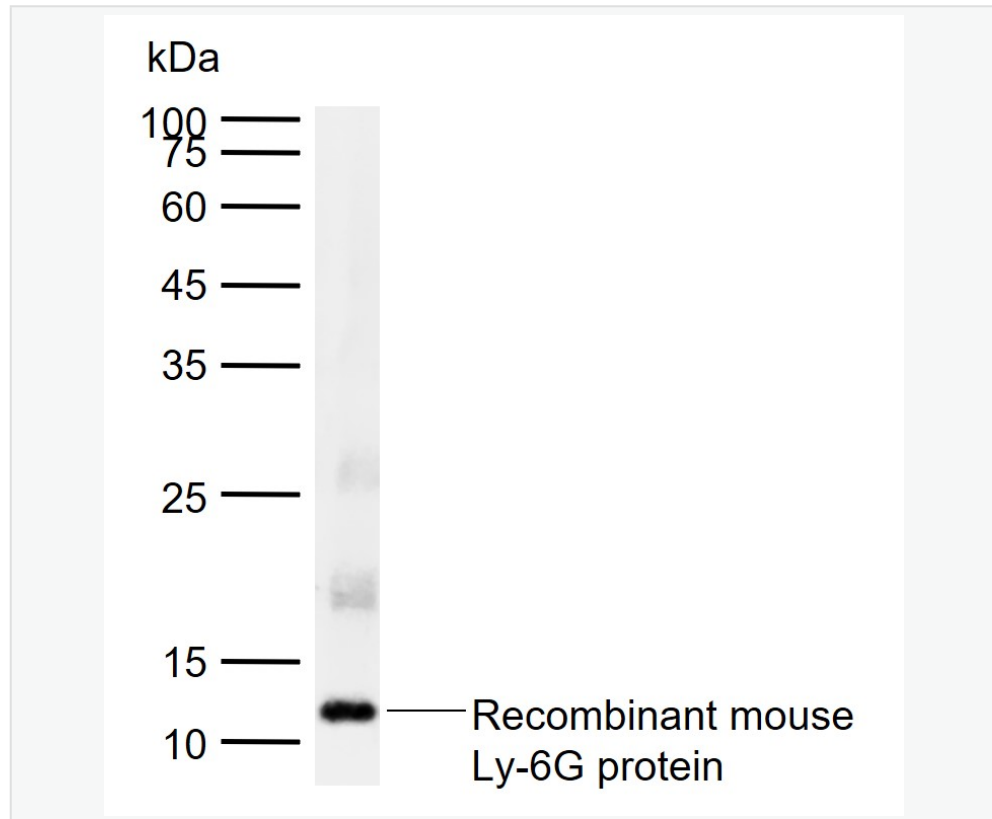
Lane 2:Recombinant Mouse Ly-6G Protein at 50ng

Primary: Rabbit Anti-Ly-6G Polyclonal Antibody at 1/1000 dilution
(Cat.SL41202R)

Secondary: IRDye800CW Goat Anti-Rabbit IgG at 1/20000 dilution

Predicted band size: 14kD

Observed band size: 13kD



Sample:

Lane 1: Recombinant mouse Ly-6G protein

Primary: Anti-Ly-6G (SL41202R) at 1/1000 dilution

Secondary: IRDye800CW Goat Anti-Rabbit IgG at 1/20000 dilution

Predicted band size: 14 kDa

Observed band size: 12 kDa