

IRDye® 800CW Goat Anti-Rabbit IgG H&L antibody

SL40295G-IRDye8

Product Name IRDye® 800CW Goat Anti-Rabbit IgG H&L

Chinese Name IRDye 800cw 羊抗兔 IgG (H+L)(进口分装)

Alias IRDye® 800CW Goat anti-Rabbit IgG H&L; Immunoglobulin G; 山羊抗兔 IgG H&L (IRDye® 800CW)预吸附二抗; ®IRDye 800cw 羊抗兔 IgG (H+L);

Specific References (9) | SL40295G-IRDye8 has been referenced in 9 publications.

[IF=6.706] Yunhua Zhang. et al. Hepatic G Protein-Coupled Receptor 180 Deficiency Ameliorates High Fat Diet-Induced Lipid Accumulation via the Gi-PKA-SREBP Pathway. NUTRIENTS. 2023 Jan;15(8):1838 **WB ; Mouse.**

PubMed:37111058

[IF=5.075] Yuting Wu. et al. Construction, Characterization, and Application of a Nonpathogenic Virus-like Model for SARS-CoV-2 Nucleocapsid Protein by Phage Display. TOXINS. 2022 Oct;14(10):683 **WB ; Other.**



PubMed:36287952

[IF=4.068] Ming Li. et al. ADAMTS12, a novel prognostic predictor, promotes cell proliferation, migration and invasion in head and neck squamous cell carcinoma. ORAL DIS. 2022 Oct;: **WB ; Human.**

PubMed:36222542

[IF=3.707] Tushar A. Shah. et al. Therapeutic Hypothermia Inhibits the Classical Complement Pathway in a Rat Model of Neonatal Hypoxic-Ischemic Encephalopathy. Front Neurosci-Switz. 2021; 15: 616734 **WB ; Rat.**

PubMed:33642979

[IF=3.333] Han et al. miR-103 promotes the metastasis and EMT of

hepatocellular carcinoma by directly inhibiting LATS2. (2018) Int.J.Oncol. 53:2433-2444 **WB ; Human.**

PubMed:30272278

[IF=3.167] Zhenya Zhai. et al. Policosanol alleviates hepatic lipid accumulation by regulating bile acids metabolism in C57BL6/mice through AMPK–FXR–TGR5 cross-talk. 2021 Nov 03 **IF ; Mouse.**

PubMed:34730235

[IF=2.629] Zhu Wen-Bo. et al. Antipharyngitis Effects of Syringa oblata L. Ethanolic Extract in Acute Pharyngitis Rat Model and Anti-Inflammatory Effect of Ir-Idoids in LPS-Induced RAW 264.7 Cells. Evid-Based Compl Alt. 2021;2021:5111752 **WB ; Rat.**

PubMed:34925529

[IF=1.817] Jiang Hai. et al. Effect of Xanthii Fructus alcohol extract on proliferation and apoptosis of HFSL-RA and its mechanism. MEDICINE. 2022 Dec;101(52):e32541 **WB ; Human.**

PubMed:36596012

[IF=1.772] Penggang Liu. et al. Expression of tumour transcription factor GLI1 in canine mammary tumours tissue. VET MED SCI. 2022 Jun 06 **IF ; Dog.**

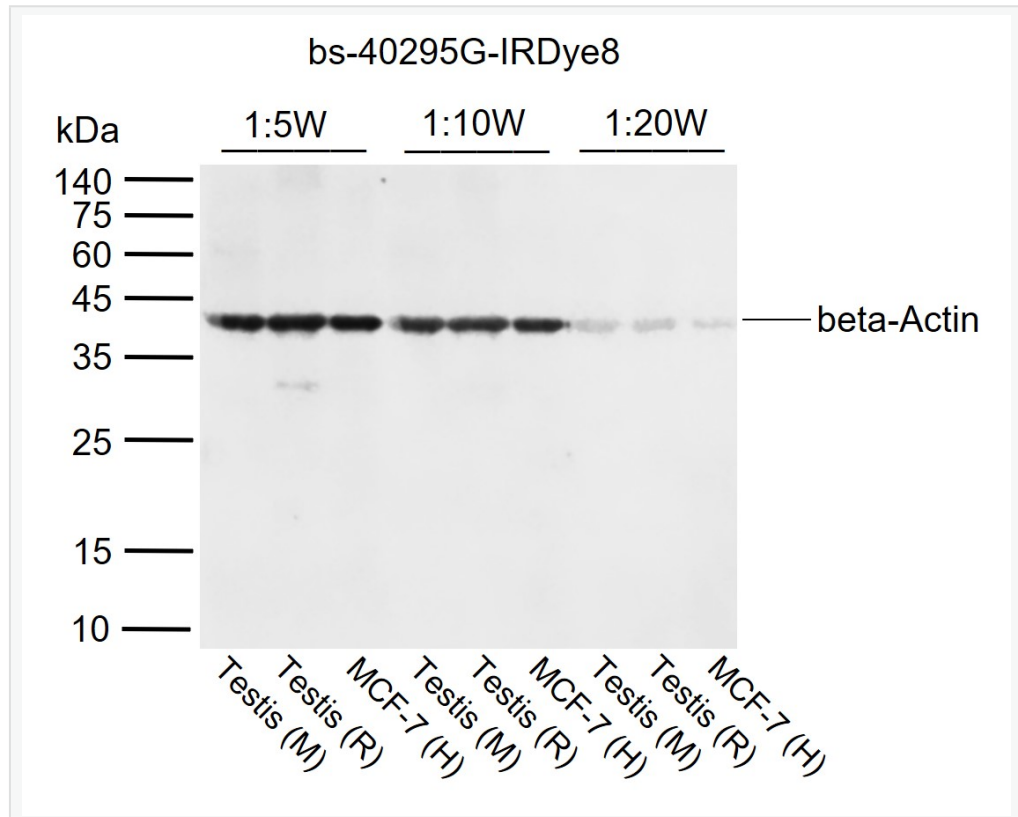
PubMed:35667035

Immunogen Species	Goat
Clonality	Polyclonal
React Species	Human, Mouse, Rat, Rabbit, WB=1:10000-30000
Applications	not yet tested in other applications. optimal dilutions/concentrations should be determined by the end user.
Form	Liquid
Concentration	1.0 mg/ml
immunogen	Native Rabbit IgG
Lsotype	IgG1
Purification	affinity purified by Protein G
Buffer Solution	10 mM TBS (pH=7.4) with 1% BSA, 1% Sodium Azide and 50% glycerol.



Storage	Store at -20°C for one year. Avoid repeated freeze/thaw cycles.
Attention	<p>This product as supplied is intended for research use only, not for use in human, therapeutic or diagnostic applications.</p> <p>IRDye800CW Conjugated Goat (polyclonal) Anti-Rabbit IgG(H+L), Highly Cross Adsorbed</p> <p>Producer: Li-Cor(USA)</p> <p>Product Number: 926-32211</p> <p>Fluorophore: IRDye 800CW(MW: 1166)</p> <p>Excitation Wavelength: 778nm(in PBS)</p> <p>Emission Wavelength: 795nm(in PBS)</p> <p>Fluorophore/Protein Ratio: 1.7 moles IRDye 800CW: 1mole IgG</p>
Product Detail	<p>IRDye 800CW antibodies can be used for a variety of applications, including Western blotting, In-Cell Western assays, In-Gel Westerns, and many others. Isolation of specific antibodies was accomplished by immunoaffinity chromatography using antigens immobilized on agarose beads. Based on immunoelectrophoresis, this antibody reacts with the heavy chains of rabbit IgG as well as the light chains common to most rabbit immunoglobulins. No reactivity was detected against non-immunoglobulin serum proteins. This antibody was tested by ELISA and/or solid phase adsorbed for minimal cross-reactivity with human, mouse, and rat serum proteins, but may cross-react with immunoglobulins from other species. The conjugate has been specifically tested and qualified for Western blot and In-Cell Western applications.</p>

Product Picture



Sample:

Lane 1,4,7: Mouse Testis tissue lysates

Lane 2,5,8: Rat Testis tissue lysates

Lane 3,6,9: Human MCF-7 cell lysates

Primary: Anti-beta-Actin (SL0061R) at 1/1:2000 dilution

Secondary: IRDye800CW Goat anti-Rabbit IgG (SL40295G-IRDye8) at 1:50000~200000 dilution

Predicted band size: 42 kDa

Observed band size: 42 kDa