

Rabbit Anti-Phospho-PTPN11 (Tyr511)antibody

SL39021R

Product Name Phospho-PTPN11 (Tyr511)

Chinese Name 磷酸化蛋白酪氨酸磷酸酶 2 抗体

Alias PTN11_HUMAN; Tyrosine-protein phosphatase non-receptor type 11; PTP2C; SHPTP2; EC:3.1.3.48; Protein-tyrosine phosphatase 1D (PTP-1D); Protein-tyrosine phosphatase 2C (PTP-2C); SH-PTP2 (SHP-2; Shp2); SH-PTP3; protein tyrosine phosphatase non-receptor type 11; CFC; NS1; JMML; BPTP3; PTP2C; METCDS;

Product Type Phosphorylated anti

Research Area Tumour immunology Neurobiology Signal transduction Kinases and Phosphatases

Immunogen Species Rabbit

Clonality Polyclonal

React Species Human(predicted:Mouse,Rat,Chicken,Pig,Cow,Rabbit,Zebrafish,Sheep)

Applications IHC-P=1:400-800,IHC-F=1:400-800,IF=1:100-500 (Paraffin sections need antigen repair)
not yet tested in other applications.
optimal dilutions/concentrations should be determined by the end user.

Theoretical molecular weight 68kDa

Cellular localization cytoplasmic

Form Liquid

Concentration 1mg/ml

immunogen KLH conjugated Synthesised phosphopeptide derived from human PTPN11 around the phosphorylation site of Tyr511: AQ(p-Y)RF

Lsotype IgG

Purification affinity purified by Protein A

Buffer Solution 1M TBS(pH7.4) with 1% BSA, 3% Proclin300 and 50% Glycerol.

Storage Shipped at 4°C. Store at -20 °C for one year. Avoid repeated freeze/thaw cycles.



Attention

This product as supplied is intended for research use only, not for use in human, therapeutic or diagnostic applications.

PubMed

[PubMed](#)

The steady state of protein tyrosyl phosphorylation in cells is regulated by the opposing action of tyrosine kinases and protein tyrosine phosphatases (PTPs). Several groups have independently identified a non transmembrane PTP, designated SHPTP1 (also known as PTP1C, HCP and SHP), which is primarily expressed in hematopoietic cells and characterized by the presence of two SH2 domains N terminal to the PTP domain. A second and much more widely expressed PTP with SH2 domains, SHPTP2 (also designated PTP1D and Syp), has been identified. SHP2 is a protein tyrosine phosphatase that is widely expressed and plays a regulatory role in various cell

SWISS:
Q06124

Gene ID:
5781

Database links:

[Entrez Gene: 5781](#) Human

[Entrez Gene: 19247](#) Mouse

[Entrez Gene: 25622](#) Rat

[Omim: 176876](#) Human

[SwissProt: Q06124](#) Human

[SwissProt: P35235](#) Mouse

[SwissProt: P41499](#) Rat

[Unigene: 506852](#) Human

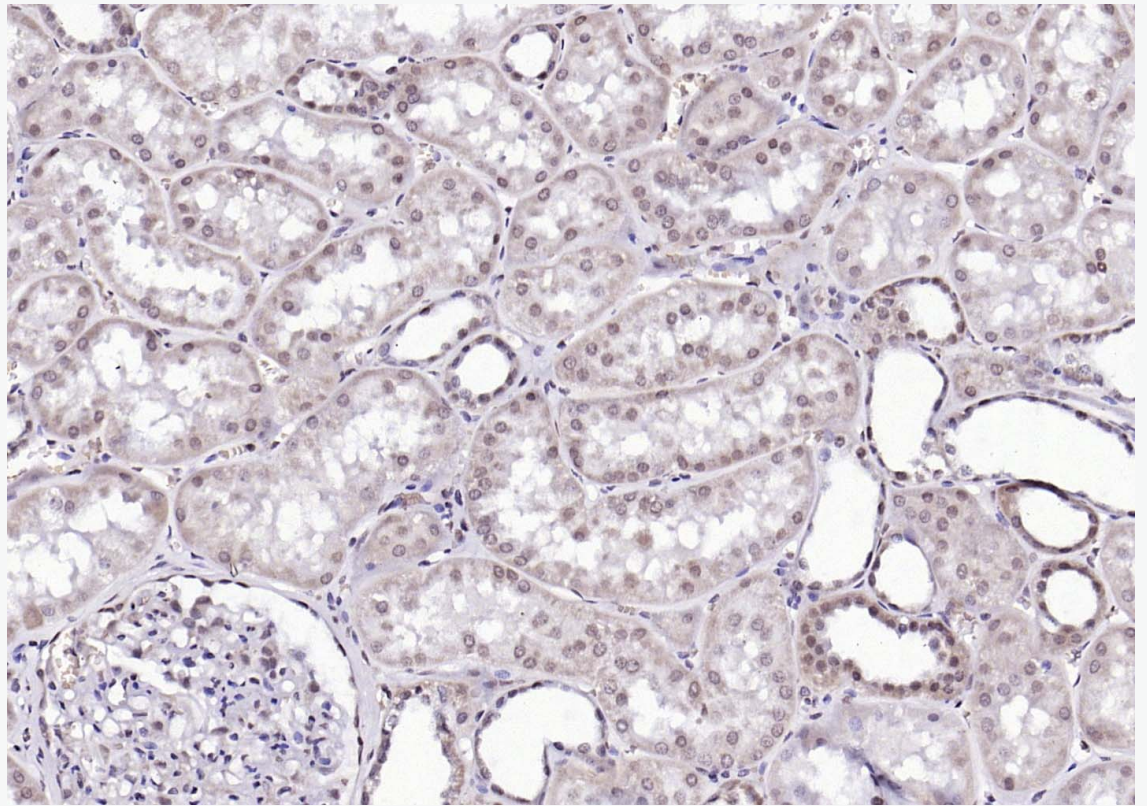
[Unigene: 474046](#) Mouse

[Unigene: 8681](#) Mouse

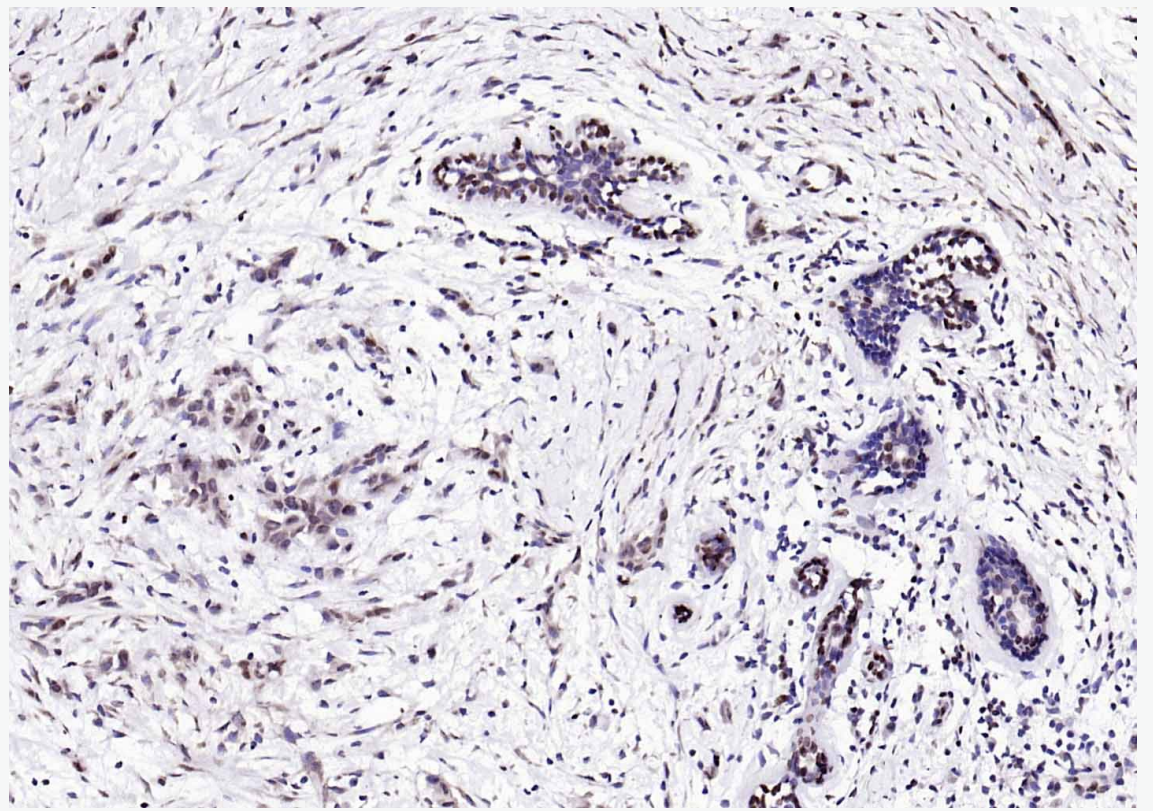
[Unigene: 98209](#) Rat

**Product
Detail**

**Product
Picture**

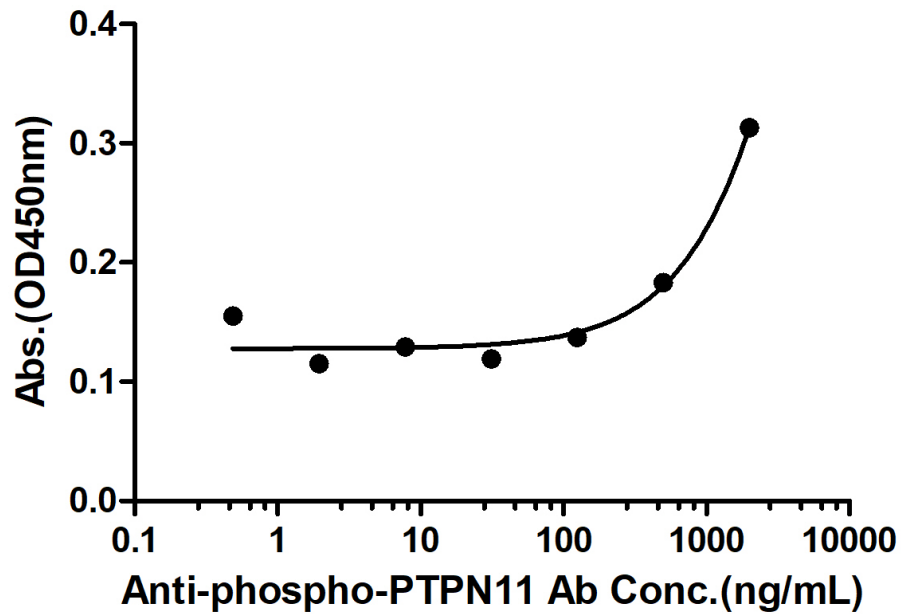


Paraformaldehyde-fixed, paraffin embedded (Human kidney); Antigen retrieval by boiling in sodium citrate buffer (pH6.0) for 15min; Block endogenous peroxidase by 3% hydrogen peroxide for 20 minutes; Blocking buffer (normal goat serum) at 37°C for 30min; Antibody incubation with (Phospho-PTPN11(Tyr511)) Polyclonal Antibody, Unconjugated (SL39021R) at 1:200 overnight at 4°C, followed by operating according to SP Kit(Rabbit) (sp-0023) instructions and DAB staining.



Paraformaldehyde-fixed, paraffin embedded (human colon carcinoma); Antigen retrieval by boiling in sodium citrate buffer (pH6.0) for 15min; Block endogenous peroxidase by 3% hydrogen peroxide for 20 minutes; Blocking buffer (normal goat serum) at 37°C for 30min; Antibody incubation with (Phospho-PTPN11(Tyr511)) Polyclonal Antibody, Unconjugated (SL39021R) at 1:200 overnight at 4°C, followed by operating according to SP Kit(Rabbit) (sp-0023) instructions and DAB staining.

Rabbit Anti-Human phospho-PTPN11 Antibody Bind with Human phospho-PTPN11 protein, His Tag



Measured by its binding ability in a indirect ELISA. Immobilized Human phospho-PTPN11 protein, His Tag (Cat. SL39021P) at 2 $\mu\text{g/mL}$ (100 $\mu\text{L/well}$) can bind Rabbit Anti-Human phospho-PTPN11 Antibody, the EC50 is 10715 ng/mL.