

Rabbit Anti-ATOX1 antibody

SL34235R

Product Name	ATOX1
Chinese Name	金属 Transporter ATX1 抗体
Alias	Antioxidant 1 Copper Chaperone; HAH1; Copper Transport Protein ATOX1; Metal Transport Protein ATX1; ATX1; ATOX1_HUMAN.
Immunogen Species	Rabbit
Clonality	Polyclonal
React Species	Human,Mouse WB=1:500-2000
Applications	not yet tested in other applications. optimal dilutions/concentrations should be determined by the end user.
Theoretical molecular weight	7kDa
Cellular localization	cytoplasmic
Form	Lyophilized or Liquid
Concentration	1mg/ml
immunogen	KLH conjugated synthetic peptide derived from human ATOX1
Lsotype	IgG
Purification	affinity purified by Protein A
Buffer Solution	PBS with 1% thiomersal,50% glycerol,pH7.3.
Storage	Shipped at 4°C. Store at -20 °C for one year. Avoid repeated freeze/thaw cycles.
Attention	This product as supplied is intended for research use only, not for use in human, therapeutic or diagnostic applications.
PubMed	PubMed
Product Detail	This gene encodes a copper chaperone that plays a role in copper homeostasis by binding and transporting cytosolic copper to ATPase proteins in the trans-Golgi network for later incorporation to the ceruloplasmin. This protein also functions as an antioxidant against superoxide and hydrogen peroxide, and therefore, may play

a significant role in cancer carcinogenesis. Because of its cytogenetic location, this gene represents a candidate gene for 5q-syndrome. [provided by RefSeq, Jul 2008]

Function:

Binds and deliver cytosolic copper to the copper ATPase proteins. May be important in cellular antioxidant defense.

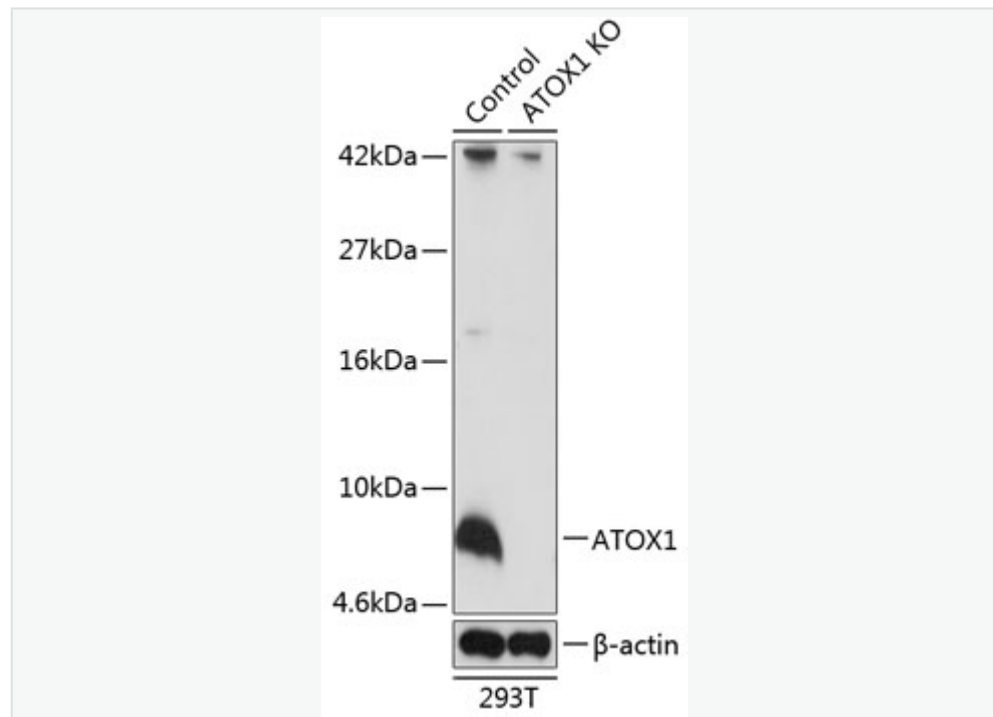
SWISS:

O00244

Gene ID:

475

Product Picture



Western blot analysis of extracts from normal (control) and ATOX1 knockout (KO) 293T cells, using ATOX1 antibody (SL34235R) at 1:1000 dilution.

Secondary antibody: HRP Goat Anti-Rabbit IgG (H+L) at 1:10000 dilution.



Lysates/proteins: 25ug per lane.

Blocking buffer: 3% nonfat dry milk in TBST.