

Rabbit Anti-NRSF antibody

SL2590R

Product Name	[KO validated anti] NRSF
Chinese Name	神经元抑制蛋白抗体
Alias	RE1-Silencing Transcription Factor; NRSF; Neural-Restrictive Silencer Factor; XBR; Neuron Restrictive Silencer Factor; Repressor Binding To The X2 Box; X2 Box Repressor; REST_HUMAN
Research Area	Neurobiology Zinc finger protein Epigenetics
Immunogen Species	Rabbit
Clonality	Polyclonal
React Species	Human(predicted:Mouse,Rat,Chicken,Pig,Cow,Horse,Rabbit) WB=1:500-2000,IHC-P=1:100-500,IHC-F=1:100-500,IF=1:100-500,IP=1:50-200 (Paraffin sections need antigen repair)
Applications	not yet tested in other applications. optimal dilutions/concentrations should be determined by the end user.
Theoretical molecular weight	121kDa
Cellular localization	The nucleus
Form	Liquid
Concentration	1mg/ml
immunogen	KLH conjugated synthetic peptide derived from human NRSF: 401-450/1097
Lsotype	IgG
Purification	affinity purified by Protein A
Buffer Solution	1M TBS(pH7.4) with 1% BSA, 3% Proclin300 and 50% Glycerol.
Storage	Shipped at 4°C. Store at -20 °C for one year. Avoid repeated freeze/thaw cycles.
Attention	This product as supplied is intended for research use only, not for use in human, therapeutic or diagnostic applications.
PubMed	PubMed

This gene encodes a transcriptional repressor that represses neuronal genes in non-neuronal tissues. It is a member of the Kruppel-type zinc finger transcription factor family. It represses transcription by binding a DNA sequence element called the neuron-restrictive silencer element. The protein is also found in undifferentiated neuronal progenitor cells and it is thought that this repressor may act as a master negative regular of neurogenesis. Alternatively spliced transcript variants have been described [provided by RefSeq, Jul 2010]

Function:

Transcriptional repressor which binds neuron-restrictive silencer element (NRSE) and represses neuronal gene transcription in non-neuronal cells. Restricts the expression of neuronal genes by associating with two distinct corepressors, mSin3 and CoREST, which in turn recruit histone deacetylase to the promoters of REST-regulated genes. Mediates repression by recruiting the BHC complex at RE1/NRSE sites which acts by deacetylating and demethylating specific sites on histones, thereby acting as a chromatin modifier. Transcriptional repression by REST-CDYL via the recruitment of histone methyltransferase EHMT2 may be important in transformation suppression.

Subunit:

Interacts with SIN3A, SIN3B and RCOR1. Interacts with CDYL. Interacts with EHMT1 and EHMT2 only in the presence of CDYL. Part of a complex containing at least CDYL, REST, WIZ, SETB1, EHMT1 and EHMT2.

**Product
Detail**

Subcellular Location:

Nucleus.

Tissue Specificity:

Ubiquitous. Expressed at higher levels in the tissues of the lymphocytic compartment, including spleen, thymus, peripheral blood lymphocytes and ovary.

Similarity:

Contains 9 C2H2-type zinc fingers.

SWISS:

Q13127

Gene ID:

5978

Database links:

[Entrez Gene: 5978](#) Human

[Entrez Gene: 19712](#) Mouse

[Entrez Gene: 83618](#) Rat

[GenBank: AAB17211](#) Human

[Omim: 600571](#) Human

[SwissProt: Q13127](#) Human

[SwissProt: Q155C6](#) Mouse

[SwissProt: Q8VIG1](#) Mouse

[SwissProt: O54963](#) Rat

[SwissProt: O54964](#) Rat

[Unigene: 307836](#) Human

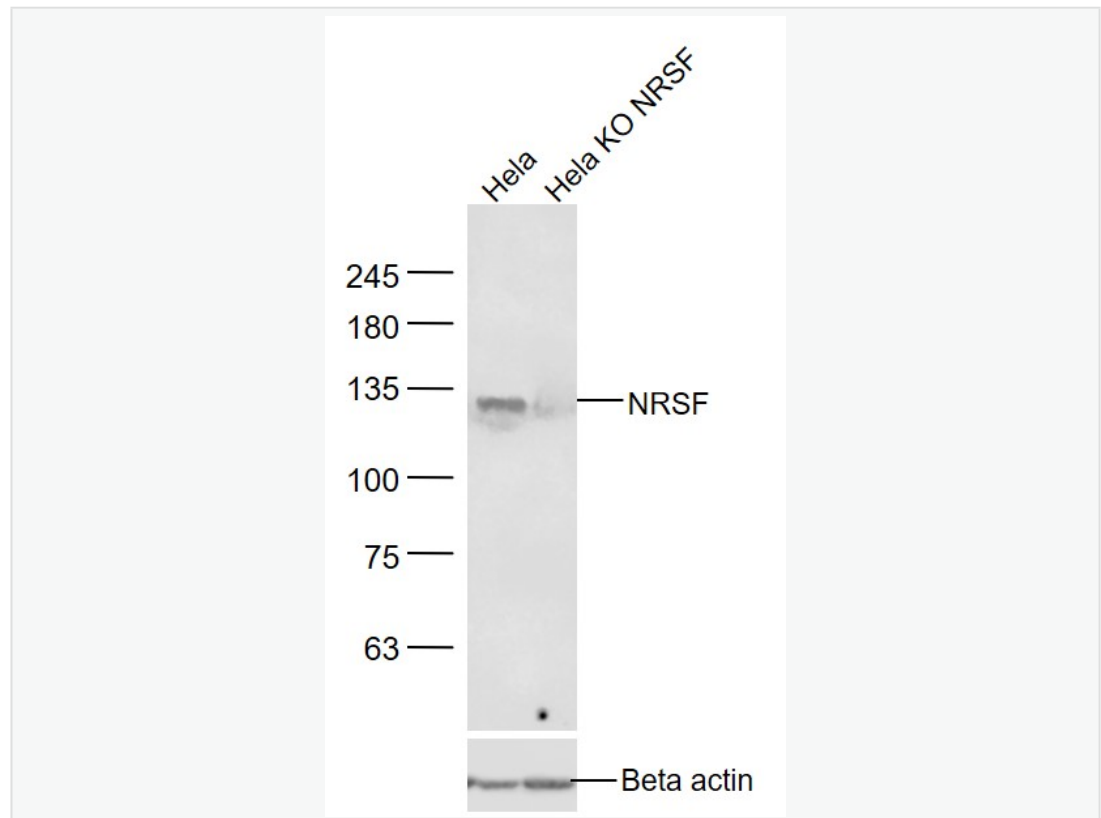
[Unigene: 631513](#) Human

[Unigene: 28840](#) Mouse

[Unigene: 482359](#) Mouse

[Unigene: 10879](#) Rat

**Product
Picture**



Sample:

Hela(Human) Cell Lysate at 30 ug

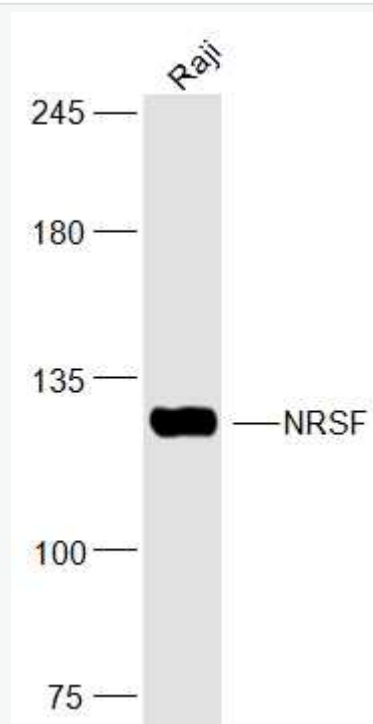
Hela KO NRSF (Human) Cell Lysate at 30 ug

Primary: Anti- NRSF (SL2590R) at 1/1000 dilution

Secondary: IRDye800CW Goat Anti-Rabbit IgG at 1/20000 dilution

Predicted band size: 121 kD

Observed band size: 121 kD



Sample:

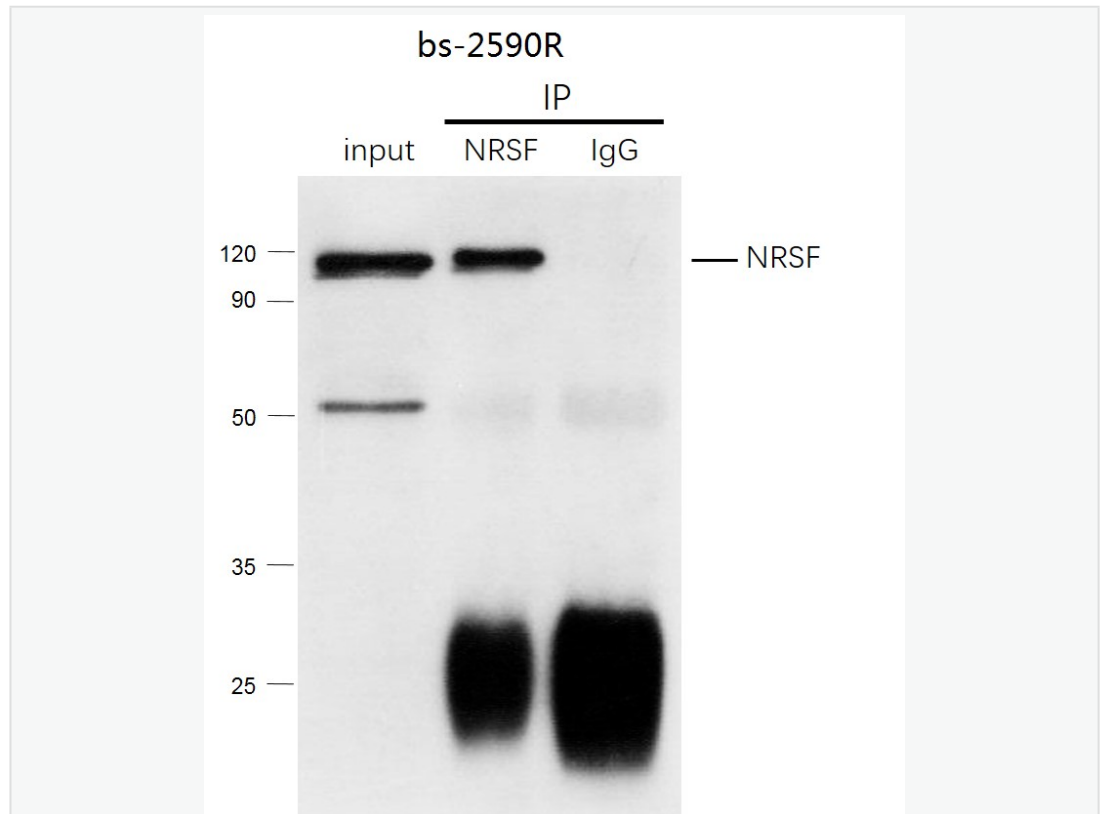
Raji(Human) Cell Lysate at 30 ug

Primary: Anti-NRSF (SL2590R) at 1/300 dilution

Secondary: IRDye800CW Goat Anti-Rabbit IgG at 1/20000 dilution

Predicted band size: 121 kD

Observed band size: 121 kD



NRSF was immunoprecipitated from human hela cells lysate with SL2590R at 1/150 dilution. Western blot was performed from the immunoprecipitate using protein A/G beads. HRP Conjugated Mouse anti-Rabbit IgG (Light Chain specific) was used as secondary antibody at 1:5000 dilution.

Lane 1: human hela cells lysate 10 μ g (Input).

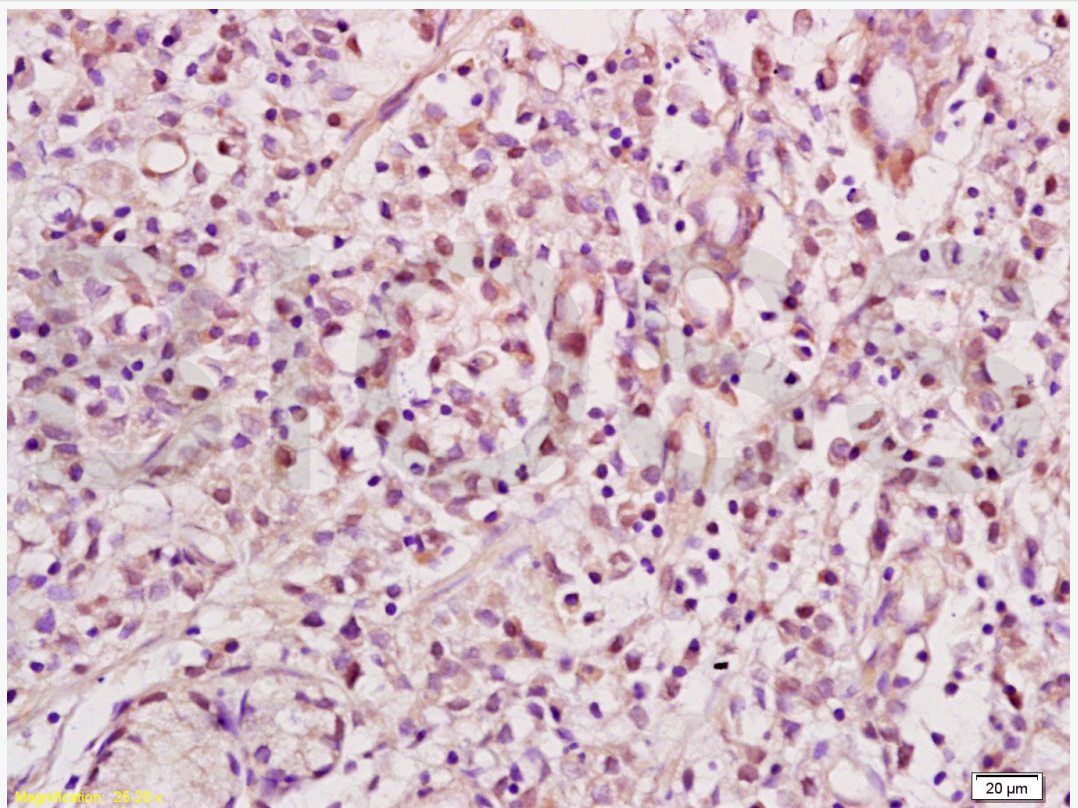
Lane 2: SL2590R IP in human hela cells lysate.

Lane 3: native rabbit IgG IP in human hela cells lysate (negative control).

Secondary

All lanes : Mouse anti-Rabbit IgG (Light Chain specific), HRP Conjugated,

1:5000



Tissue/cell: human gastric tissue; 4% Paraformaldehyde-fixed and paraffin-embedded;

Antigen retrieval: citrate buffer (1M, pH 6.0), Boiling bathing for 15min; Block endogenous peroxidase by 3% Hydrogen peroxide for 30min; Blocking buffer (normal goat serum,C-0005) at 37°C for 20 min;



Incubation: Anti-NRSF/REST Polyclonal Antibody, Unconjugated(SL2590R)
1:200, overnight at 4°C, followed by conjugation to the secondary
antibody(SP-0023) and DAB(C-0010) staining