

## Rabbit Anti-DUSP6 antibody

SL25383R

<b>Product Name</b>	DUSP6
<b>Chinese Name</b>	双特异性蛋白磷酸酶 6/丝裂原活化蛋白激酶磷酸酶 3 抗体
<b>Alias</b>	Dual specificity phosphatase 6; Dual specificity phosphatase 6 isoform a; Dual specificity protein phosphatase 6; Dual specificity protein phosphatase PYST1; DUS6_HUMAN; DUSP 6; DUSP 6a; Dusp6; DUSP6a; MAP kinase phosphatase 3; Mitogen activated protein kinase phosphatase 3; Mitogen-activated protein kinase phosphatase 3; MKP 3; MKP-3; MKP3; PYST 1; PYST1; Serine/threonine specific protein phosphatase.
<b>Research Area</b>	Neurobiology Signal transduction Kinases and Phosphatases
<b>Immunogen Species</b>	Rabbit
<b>Clonality</b>	Polyclonal
<b>React Species</b>	Mouse,Rat(predicted:Human,Dog,Pig,Cow,Rabbit,Sheep) WB=1:500-2000
<b>Applications</b>	not yet tested in other applications. optimal dilutions/concentrations should be determined by the end user.
<b>Theoretical molecular weight</b>	42kDa
<b>Cellular localization</b>	cytoplasmic
<b>Form</b>	Lyophilized or Liquid
<b>Concentration immunogen</b>	1mg/ml KLH conjugated synthetic peptide derived from human DUSP6
<b>Lsotype</b>	IgG
<b>Purification</b>	affinity purified by Protein A
<b>Buffer Solution</b>	1M TBS(pH7.4) with 1% BSA, 3% Proclin300 and 50% Glycerol.
<b>Storage</b>	Shipped at 4°C. Store at -20 °C for one year. Avoid repeated freeze/thaw cycles.
<b>Attention</b>	This product as supplied is intended for research use only, not for use in human, therapeutic or diagnostic applications.
<b>PubMed</b>	<a href="#">PubMed</a>

The protein encoded by this gene is a member of the dual specificity protein phosphatase subfamily. These phosphatases inactivate their target kinases by dephosphorylating both the phosphoserine/threonine and phosphotyrosine residues. They negatively regulate members of the mitogen-activated protein (MAP) kinase superfamily (MAPK/ERK, SAPK/JNK, p38), which are associated with cellular proliferation and differentiation. Different members of the family of dual specificity phosphatases show distinct substrate specificities for various MAP kinases, different tissue distribution and subcellular localization, and different modes of inducibility of their expression by extracellular stimuli. This gene product inactivates ERK2, is expressed in a variety of tissues with the highest levels in heart and pancreas, and unlike most other members of this family, is localized in the cytoplasm. Two transcript variants encoding different isoforms have been found for this gene. [provided by RefSeq, Jul 2008]

## Product Detail

### **Function:**

Inactivates MAP kinases. Has a specificity for the ERK family.

### **Subcellular Location:**

Cytoplasm.

### **Similarity:**

Belongs to the protein-tyrosine phosphatase family. Non-receptor class dual specificity subfamily.

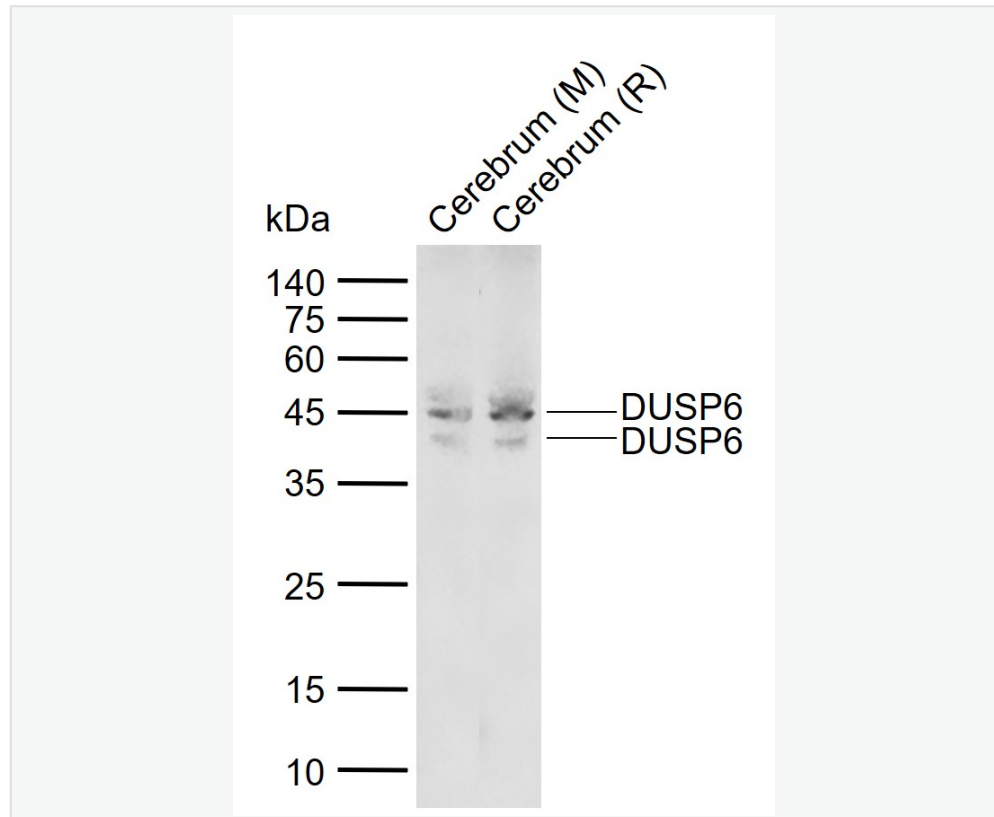
### **SWISS:**

Q16828

### **Gene ID:**

1848

**Product Picture**



Sample:

Lane 1: Mouse Cerebrum tissue lysates

Lane 2: Rat Cerebrum tissue lysates

Primary: Anti-DUSP6 (SL25383R) at 1/1000 dilution

Secondary: IRDye800CW Goat Anti-Rabbit IgG at 1/20000 dilution

Predicted band size: 42 kDa

Observed band size: 45,42 kDa