

Rabbit Anti-BASP1 antibody

SL25366R

Product Name	BASP1
Chinese Name	脑富含膜附着信号蛋白 1 抗体
Alias	BASP 1; BASP-1; BASP1 protein; Brain abundant membrane attached signal protein 1; Brain Abundant Signal Protein Membrane Attached 1; Brain Acid Soluble Protein 1; CAP 23; CAP23; MGC8555; NAP 22; NAP-22; NAP22; Neuronal axonal membrane protein NAP 22; Neuronal tissue enriched acidic protein; 22 kDa neuronal tissue enriched acidic protein; BASP1_HUMAN.
Research Area	Cell biology Neurobiology Epigenetics
Immunogen Species	Rabbit
Clonality	Polyclonal
React Species	Human,Mouse,Rat(predicted:Pig,Cow,Rabbit,Zebrafish) WB=1:500-2000
Applications	not yet tested in other applications. optimal dilutions/concentrations should be determined by the end user.
Theoretical molecular weight	25kDa
Cellular localization	The cell membrane
Form	Liquid
Concentration	1mg/ml
immunogen	KLH conjugated synthetic peptide derived from human BASP1: 1-100/227
Lsotype	IgG
Purification	affinity purified by Protein A
Buffer Solution	1M TBS(pH7.4) with 1% BSA, 3% Proclin300 and 50% Glycerol.
Storage	Shipped at 4°C. Store at -20 °C for one year. Avoid repeated freeze/thaw cycles.
Attention	This product as supplied is intended for research use only, not for use in human, therapeutic or diagnostic applications.
PubMed	PubMed
Product Detail	Neuronal axonal membrane protein Nap-22, also designated neuronal

tissue-enriched acidic protein or brain acid soluble protein (BASP1), is a Ca²⁺-dependent calmodulin-binding protein that is important for neuronal sprouting and plasticity. Nap-22 is abundant in brain nerve terminals and is also present in significant amounts in kidney, testis and lymphoid tissue. Nap-22 undergoes N-terminal myristoylation for membrane localization. It has been characterized as a major protein of neuronal rafts, which are known to preferentially bind membranes containing cholesterol. Nap-22 is a crucial protein active in neurite outgrowth and synaptic plasticity.

SWISS:
P80723

Gene ID:
10409

Database links:

[Entrez Gene: 10409](#) Human

[Entrez Gene: 70350](#) Mouse

[Omim: 605940](#) Human

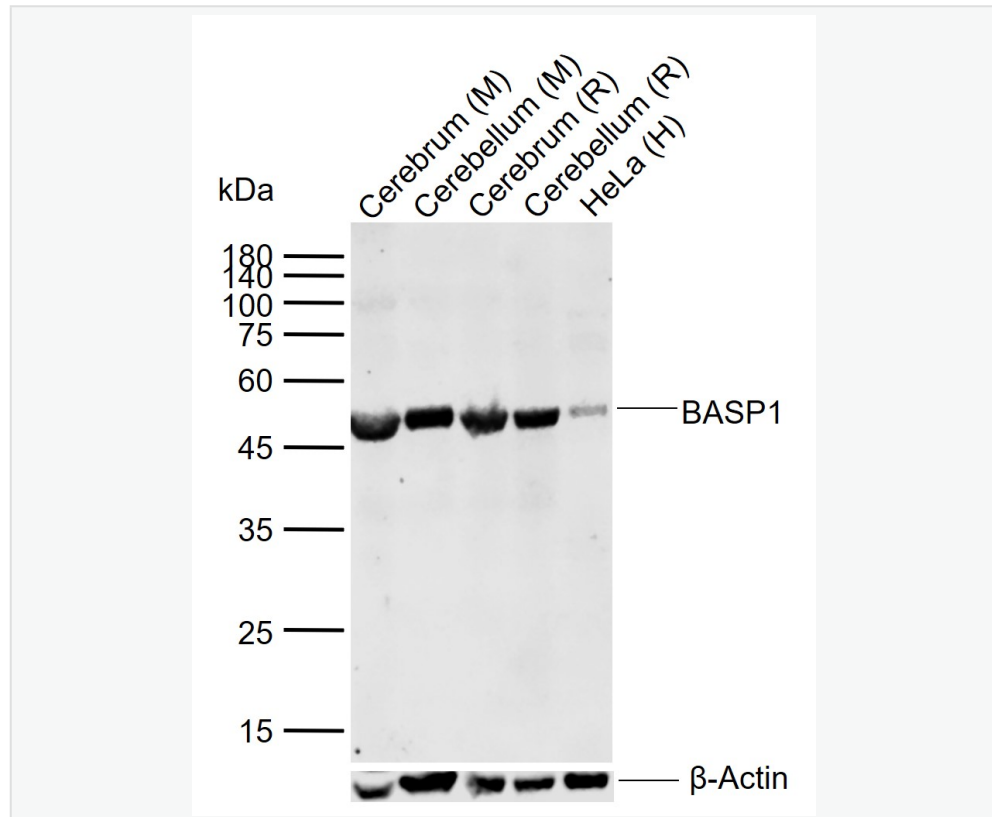
[SwissProt: P80723](#) Human

[SwissProt: Q91XV3](#) Mouse

[Unigene: 201641](#) Human

[Unigene: 29586](#) Mouse

Product Picture



Sample:

Lane 1: Mouse Cerebrum tissue lysates

Lane 2: Mouse Cerebellum tissue lysates

Lane 3: Rat Cerebrum tissue lysates

Lane 4: Rat Cerebellum tissue lysates

Lane 5: Human HeLa cell lysates

Primary: Anti-BASP1 (SL25366R) at 1/1000 dilution

Secondary: IRDye800CW Goat Anti-Rabbit IgG at 1/20000 dilution

Predicted band size: 25 kDa



SunLong Biotech Co.,LTD
Tel: 0086-571-56623320 Fax:0086-571-56623318
E-mail:sales@sunlongbiotech.com
www.sunlongbiotech.com

Observed band size: 47 kDa