

## Rabbit Anti-TMEM30A antibody

SL25287R

**Product Name** TMEM30A

**Chinese Name** Transmembrane protein30A 抗体

**Alias** C6orf67; CDC50A; CC50A\_HUMAN; Cell cycle control protein 50A; FLJ10856; TMEM30A.

**Research Area** Cell biology immunology

**Immunogen Species** Rabbit

**Clonality** Polyclonal

**React Species** Mouse,Rat(predicted:Human,Pig,Cow,Horse,Sheep)

WB=1:500-2000,IHC-P=1:100-500,IHC-F=1:400-800,IF=1:100-500

**Applications** not yet tested in other applications.  
optimal dilutions/concentrations should be determined by the end user.

**Theoretical molecular weight** 41kDa

**Cellular localization** The cell membrane

**Form** Liquid

**Concentration** 1mg/ml

**immunogen** KLH conjugated synthetic peptide derived from human TMEM30A: 300-361/361 <Cytoplasmic>

**Lsotype** IgG

**Purification** affinity purified by Protein A

**Buffer Solution** 1M TBS(pH7.4) with 1% BSA, 3% Proclin300 and 50% Glycerol.

**Storage** Shipped at 4°C. Store at -20 °C for one year. Avoid repeated freeze/thaw cycles.

**Attention** This product as supplied is intended for research use only, not for use in human, therapeutic or diagnostic applications.

**PubMed** [PubMed](#)

**Product** Enables aminophospholipid flippase activity. Involved in several processes, including

**Detail**

phospholipid transport; positive regulation of transport; and xenobiotic transmembrane transport. Located in endoplasmic reticulum and plasma membrane. Part of phospholipid-translocating ATPase complex. [provided by Alliance of Genome Resources, Nov 2021]

**SWISS:**  
Q9NV96

**Gene ID:**  
55754

**Database links:**

[Entrez Gene: 55754](#) Human

[Entrez Gene: 69981](#) Mouse

[Entrez Gene: 300857](#) Rat

[Entrez Gene: 337397](#) Zebrafish

[Omim: 611028](#) Human

[SwissProt: E2R2Z8](#) Dog

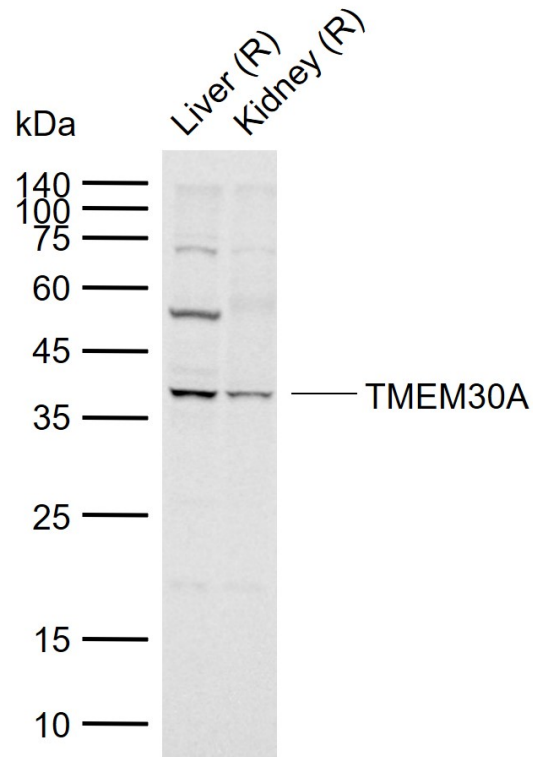
[SwissProt: Q9NV96](#) Human

[SwissProt: Q8VEK0](#) Mouse

[SwissProt: D3ZYA3](#) Rat

[SwissProt: Q6TNV5](#) Zebrafish

**Product  
Picture**



Sample:

Lane 1: Rat Liver tissue lysates

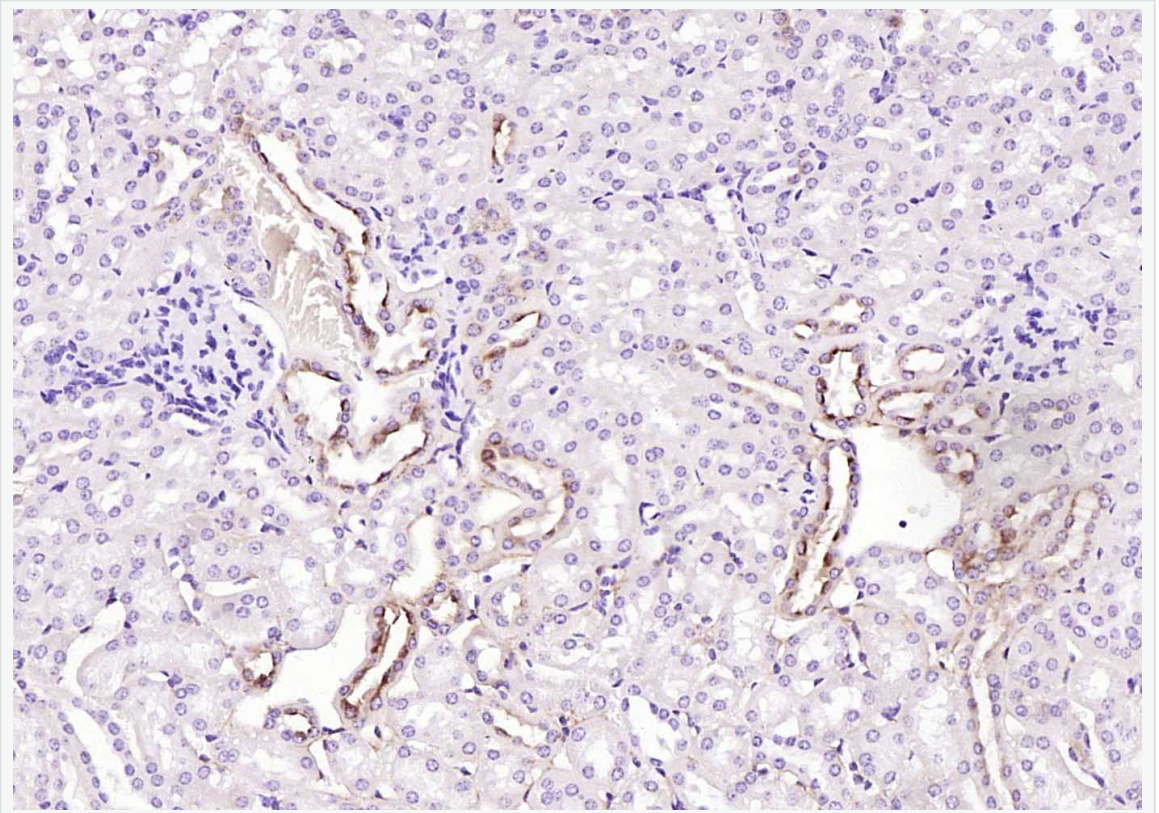
Lane 2: Rat Kidney tissue lysates

Primary: Anti-TMEM30A (SL25287R) at 1/1000 dilution

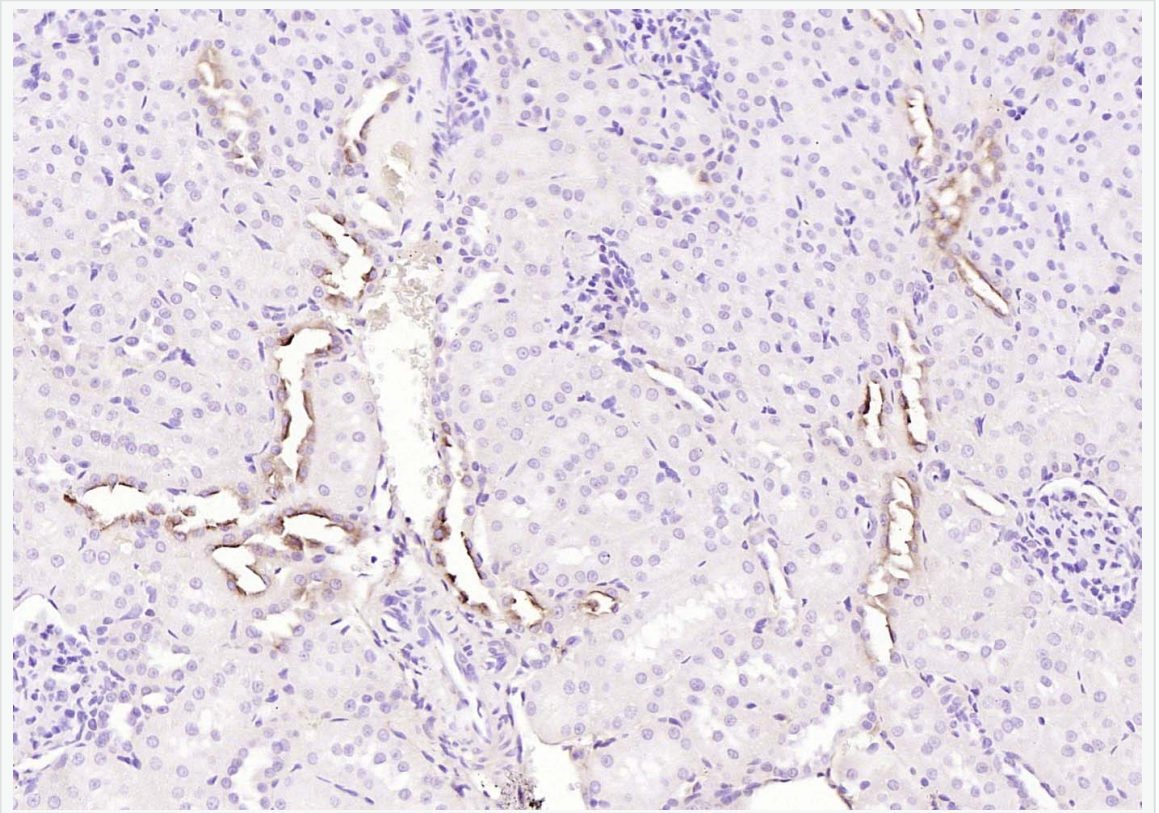
Secondary: IRDye800CW Goat Anti-Rabbit IgG at 1/20000 dilution

Predicted band size: 41 kDa

Observed band size: 40 kDa



Paraformaldehyde-fixed, paraffin embedded (mouse kidney); Antigen retrieval by boiling in sodium citrate buffer (pH6.0) for 15min; Block endogenous peroxidase by 3% hydrogen peroxide for 20 minutes; Blocking buffer (normal goat serum) at 37°C for 30min; Incubation with (TMEM30A) Polyclonal Antibody, Unconjugated (SL25287R) at 1:200 overnight at 4°C, followed by operating according to SP Kit(Rabbit) (sp-0023) instructions and DAB staining.



Paraformaldehyde-fixed, paraffin embedded (rat kidney); Antigen retrieval by boiling in sodium citrate buffer (pH6.0) for 15min; Block endogenous peroxidase by 3% hydrogen peroxide for 20 minutes; Blocking buffer (normal goat serum) at 37°C for 30min; Incubation with (TMEM30A) Polyclonal Antibody, Unconjugated (SL25287R) at 1:200 overnight at 4°C, followed by operating according to SP Kit(Rabbit) (sp-0023) instructions and DAB staining.