

Rabbit Anti-SLCO2B1 antibody

SL25185R

Product Name	SLCO2B1
Chinese Name	可溶性载质 Transporter2B1 抗体
Research Area	Tumour Cell biology immunology transcriptional regulatory factor Transporter
Immunogen Species	Rabbit
Clonality	Polyclonal
React Species	Human WB=1:500-2000
Applications	not yet tested in other applications. optimal dilutions/concentrations should be determined by the end user.
Theoretical molecular weight	77kDa
Cellular localization	The cell membrane
Form	Liquid
Concentration	1mg/ml
immunogen	KLH conjugated synthetic peptide derived from human SLCO2B1
Lsotype	IgG
Purification	affinity purified by Protein A
Buffer Solution	1M TBS(pH7.4) with 1% BSA, 3% Proclin300 and 50% Glycerol.
Storage	Shipped at 4°C. Store at -20 °C for one year. Avoid repeated freeze/thaw cycles.
Attention	This product as supplied is intended for research use only, not for use in human, therapeutic or diagnostic applications.
PubMed	PubMed
Product Detail	SLCO2B1 (solute carrier organic anion transporter family member 2B1), or Organic anion transporter B (OATP-B) mediates sodium-independent transport of organic anions. Unlike other related proteins, SLCO2B1 is expressed in many tissues, including liver, placenta, brain, heart and intestine. SLCO2B1 plays a role in the uptake of steroids and a number of drugs such as

statins.

Function:

Mediates the Na(+)-independent transport of organic anions such as taurocholate, the prostaglandins PGD2, PGE1, PGE2, leukotriene C4, thromboxane B2 and iloprost.

Subcellular Location:

Cell membrane; Multi-pass membrane protein.

Similarity:

Belongs to the organo anion transporter (TC 2.A.60) family.
Contains 1 Kazal-like domain.

SWISS:

O94956

Gene ID:

11309

Database links:

[Entrez Gene: 11309](#) Human

[Entrez Gene: 101488](#) Mouse

[Entrez Gene: 140860](#) Rat

[Omim: 604988](#) Human

[SwissProt: O94956](#) Human

[SwissProt: Q8BXB6](#) Mouse

[SwissProt: Q9JHI3](#) Rat

[Unigene: 7884](#) Human

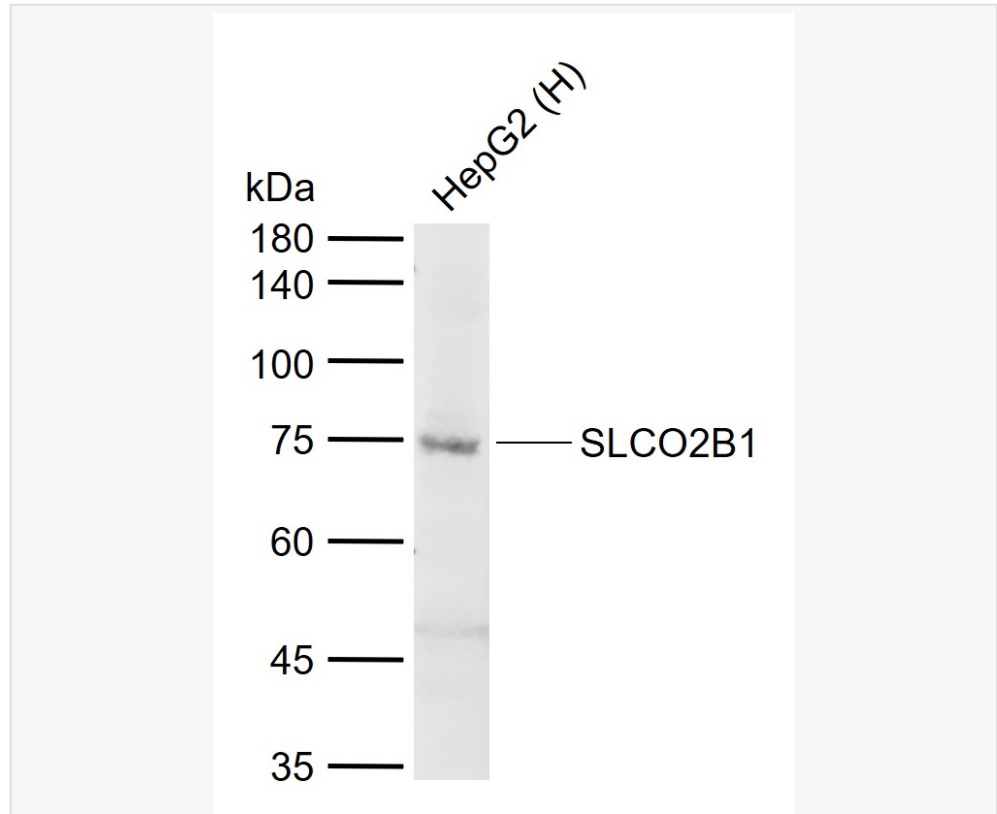
[Unigene: 11249](#) Mouse

[Unigene: 44538](#) Rat

OATPRP2 又称阴离子 Transporter 家族 2B1、有机阴离子转运多肽相关

蛋白 2。

Product Picture



Sample:

Lane 1: Human HepG2 cell lysates

Primary: Anti-SLCO2B1 (SL25185R) at 1/1000 dilution

Secondary: IRDye800CW Goat Anti-Rabbit IgG at 1/20000 dilution

Predicted band size: 77 kDa

Observed band size: 75 kDa