

## Rabbit Anti-CD93 antibody

SL2474R

<b>Product Name</b>	CD93
<b>Chinese Name</b>	CD93 抗体
<b>Alias</b>	C1qrp; Complement component C1q receptor; C1q/MBL/SPA receptor; C1qR(p); C1qr1; C1qRp; CD93 antigen; CD93 molecule; CDw93; Complement component 1 q subcomponent receptor 1; Complement component C1q receptor; dJ737E23.1; ECSM3; Ly68; Matrix remodeling associated protein 4; MXRA4.
<b>Research Area</b>	immunology Cell adhesion molecule Cell Surface Molecule glycoprotein Cell type markers
<b>Immunogen Species</b>	Rabbit
<b>Clonality</b>	Polyclonal
<b>React Species</b>	Human(predicted:Mouse,Rat,Pig,Cow,Horse,Rabbit,Sheep) Flow-Cyt=1µg/Test (Paraffin sections need antigen repair)
<b>Applications</b>	not yet tested in other applications. optimal dilutions/concentrations should be determined by the end user.
<b>Theoretical molecular weight</b>	70kDa
<b>Cellular localization</b>	The cell membrane
<b>Form</b>	Liquid
<b>Concentration</b>	1mg/ml
<b>immunogen</b>	KLH conjugated synthetic peptide derived from human CD93: 601-652/652
<b>Lsotype</b>	IgG
<b>Purification</b>	affinity purified by Protein A
<b>Buffer Solution</b>	1M TBS(pH7.4) with 1% BSA, 3% Proclin300 and 50% Glycerol.
<b>Storage</b>	Shipped at 4°C. Store at -20 °C for one year. Avoid repeated freeze/thaw cycles.
<b>Attention</b>	This product as supplied is intended for research use only, not for use in human, therapeutic or diagnostic applications.
<b>PubMed</b>	<a href="#">PubMed</a>

The protein encoded by this gene is a cell-surface glycoprotein and type I membrane protein that was originally identified as a myeloid cell-specific marker. The encoded protein was once thought to be a receptor for C1q, but now is thought to instead be involved in intercellular adhesion and in the clearance of apoptotic cells. The intracellular cytoplasmic tail of this protein has been found to interact with moesin, a protein known to play a role in linking transmembrane proteins to the cytoskeleton and in the remodelling of the cytoskeleton. [provided by RefSeq, Jul 2008].

**Function:**

Receptor (or element of a larger receptor complex) for C1q, mannose-binding lectin (MBL2) and pulmonary surfactant protein A (SPA). May mediate the enhancement of phagocytosis in monocytes and macrophages upon interaction with soluble defense collagens. May play a role in intercellular adhesion.

**Subunit:**

Interacts with HCV core protein. Interacts with C1QBP; the association may represent a cell surface C1q receptor.

**Subcellular Location:**

Membrane; Single-pass type I membrane protein.

**Product Detail**

**Tissue Specificity:**

Highly expressed in endothelial cells, platelets, cells of myeloid origin, such as monocytes and neutrophils. Not expressed in cells of lymphoid origin.

**Post-translational modifications:**

N- and O-glycosylated.

**Similarity:**

Contains 1 C-type lectin domain.

Contains 5 EGF-like domains.

**SWISS:**

Q9NPY3

**Gene ID:**

22918

**Database links:**

[Entrez Gene: 22918](#) Human

[Entrez Gene: 17064](#) Mouse

[Entrez Gene: 84398](#) Rat

[Omim: 120577](#) Human

[SwissProt: Q9NPY3](#) Human

[SwissProt: O89103](#) Mouse

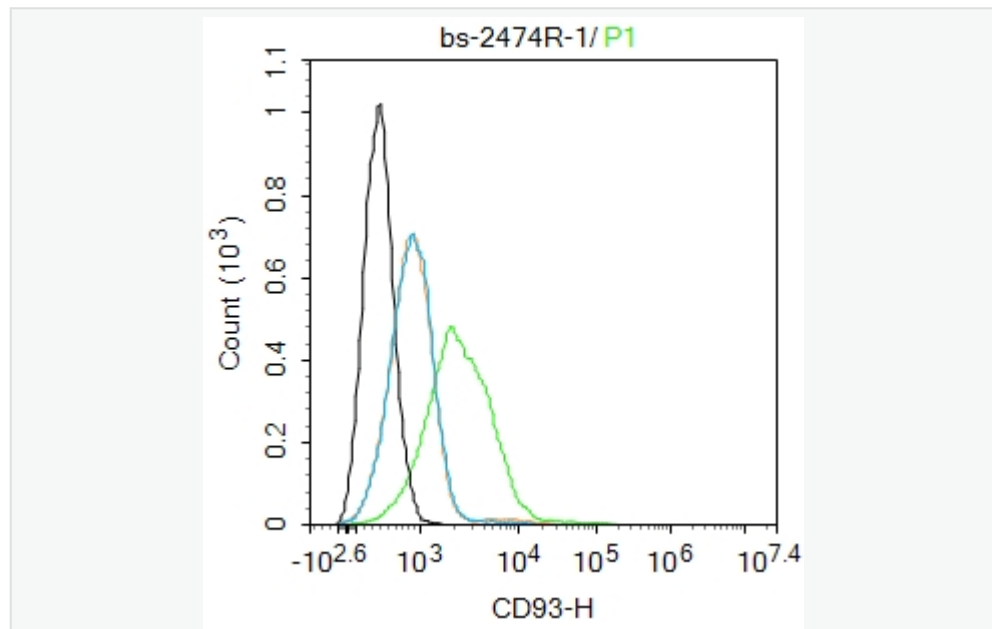
[SwissProt: Q9ET61](#) Rat

[Unigene: 97199](#) Human

[Unigene: 681](#) Mouse

[Unigene: 162695](#) Rat

## Product Picture



Blank control:HUVEC.

Primary Antibody (green line): Rabbit Anti-CD93 antibody (SL2474R)

Dilution: 1ug/Test;

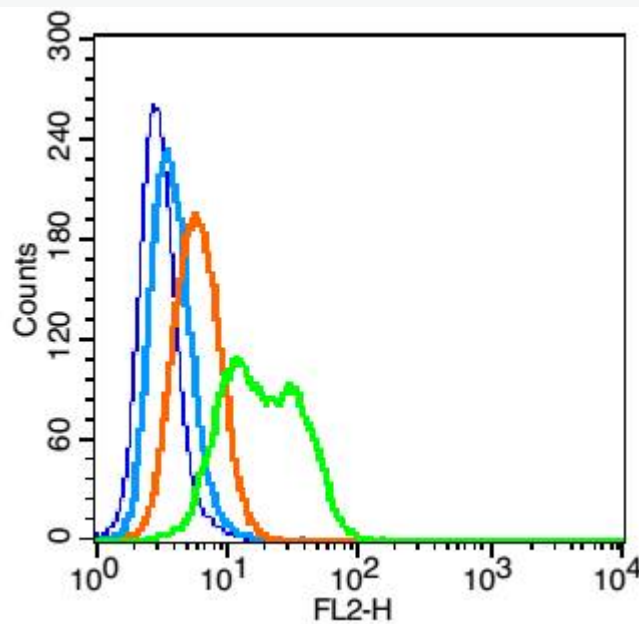
Secondary Antibody (white blue line) : Goat anti-rabbit IgG-AF488

Dilution: 0.5ug/Test.

Isotype control (orange line) : Normal Rabbit IgG

Protocol

The cells were incubated in 5%BSA to block non-specific protein-protein interactions for 30 min at room temperature .Cells stained with Primary Antibody for 30 min at room temperature. The secondary antibody used for 40 min at room temperature. Acquisition of 20,000 events was performed.



Blank control(blue): U937(fixed with 2% paraformaldehyde (10 min)).

Primary Antibody: Rabbit Anti-CD93 antibody(SL2474R), Dilution: 1 $\mu$ g in 100  $\mu$ L 1X PBS containing 0.5% BSA;

Isotype Control Antibody: Rabbit IgG(orange) ,used under the same



conditions );

Secondary Antibody: Goat anti-rabbit IgG-PE(white blue), Dilution:

1:200 in 1 X PBS containing 0.5% BSA.