



## Rabbit Anti-SERPINB1 antibody

SL22116R

<b>Product Name</b>	SERPINB1
<b>Chinese Name</b>	丝氨酸蛋白酶抑制剂 B1 抗体
<b>Alias</b>	Anti elastase; EI; ELANH2; ILEU_HUMAN; LEI; Leukocyte elastase inhibitor; M/NEI; MNEI; Monocyte/neutrophil elastase inhibitor; Peptidase inhibitor 2; Pi-2; PI2; Serine (or cysteine) proteinase inhibitor clade B (ovalbumin) member 1; Serpin B1; Serpin peptidase inhibitor clade B (ovalbumin) member 1; serpinb1.
<b>Research Area</b>	Cardiovascular Cell biology immunology Kinases and Phosphatases
<b>Immunogen Species</b>	Rabbit
<b>Clonality</b>	Polyclonal
<b>React Species</b>	Human,Mouse(predicted:Rat) WB=1:500-2000
<b>Applications</b>	not yet tested in other applications. optimal dilutions/concentrations should be determined by the end user.
<b>Theoretical molecular weight</b>	43kDa
<b>Cellular localization</b>	cytoplasmic
<b>Form</b>	Liquid
<b>Concentration</b>	1mg/ml
<b>immunogen</b>	KLH conjugated synthetic peptide derived from human SERPINB1 : 131-230/379
<b>Lsotype</b>	IgG
<b>Purification</b>	affinity purified by Protein A
<b>Buffer Solution</b>	Human,Mouse(predicted:Rat)1M TBS(pH7.4) with 1% BSA, Human,Mouse(predicted:Rat)3% Proclin300 and 50% Glycerol.
<b>Storage</b>	Shipped at 4°C. Store at -20 °C for one year. Avoid repeated freeze/thaw cycles.
<b>Attention</b>	This product as supplied is intended for research use only, not for use in human, therapeutic or diagnostic applications.

## PubMed

### [PubMed](#)

The serine proteinase inhibitors (serpins) compose a superfamily of proteins with a diverse set of functions, including the control of blood coagulation, complement activation, programmed cell death and development. Serpins are secreted glycoproteins that contain a stretch of peptide that mimics a true substrate for a corresponding serine protease. The monocyte/neutrophil elastase inhibitor gene, SERPINB1, belongs to the Ov-serpin family (ovalbumin-related serpins). Human SerpinB1, also designated monocyte/neutrophil elastase inhibitor (M/NEI) or leukocyte elastase inhibitor (LEI), is a cytoplasmic protein which acts as a fast-acting stoichiometric proteinase inhibitor that regulates the activity of neutrophil elastase (NE), cathepsin-G and proteinase-3. There are four homologous genes in mouse designated SerpinB1a, SerpinB1b, SerpinB1c and the pseudogene, Serpinb1-ps1. The three protein-coding genes share significant sequence identity, however SerpinB1a (also designated EIA) has been characterized as the functional ortholog of human SerpinB1.

#### **Function:**

Regulates the activity of the neutrophil proteases elastase, cathepsin G, proteinase-3, chymase, chymotrypsin, and kallikrein-3.

## Product Detail

#### **Subcellular Location:**

Cytoplasm.

#### **Similarity:**

Belongs to the serpin family. Ov-serpin subfamily.

#### **SWISS:**

P30740

#### **Gene ID:**

1992

#### **Database links:**

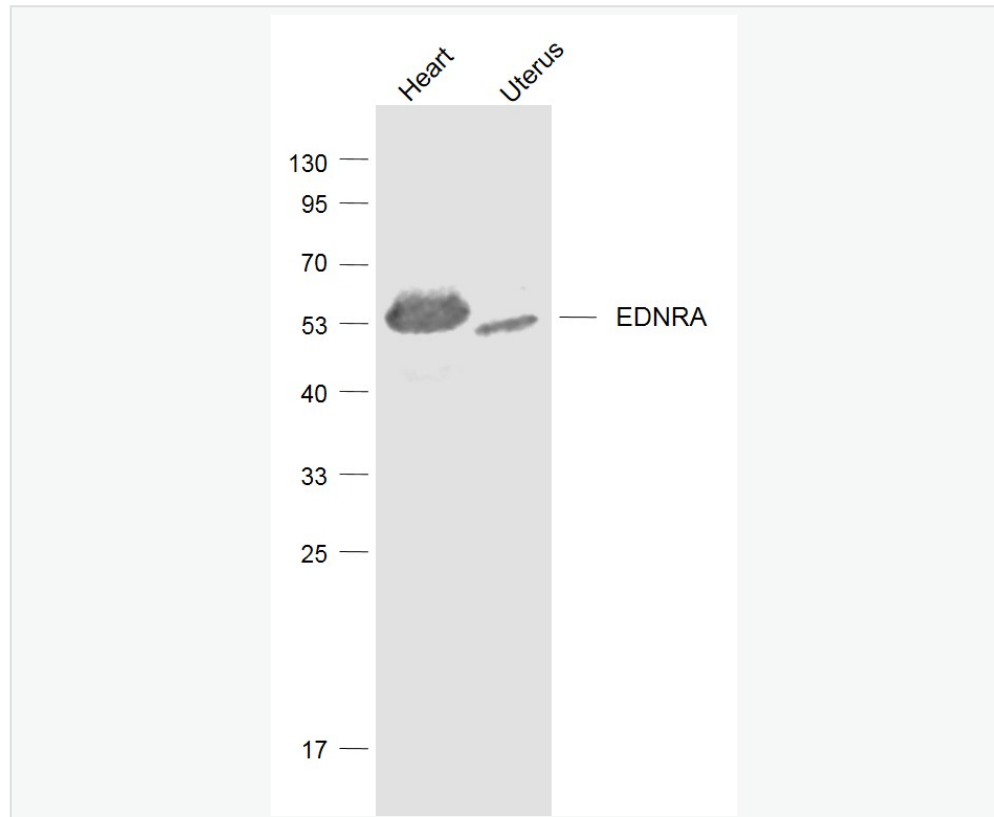
[Entrez Gene: 1992](#) Human

[Omim: 130135](#) Human

[SwissProt: P30740](#) Human

[Unigene: 381167](#) Human

**Product Picture**



**Sample:**

Heart (Mouse) Lysate at 40 ug

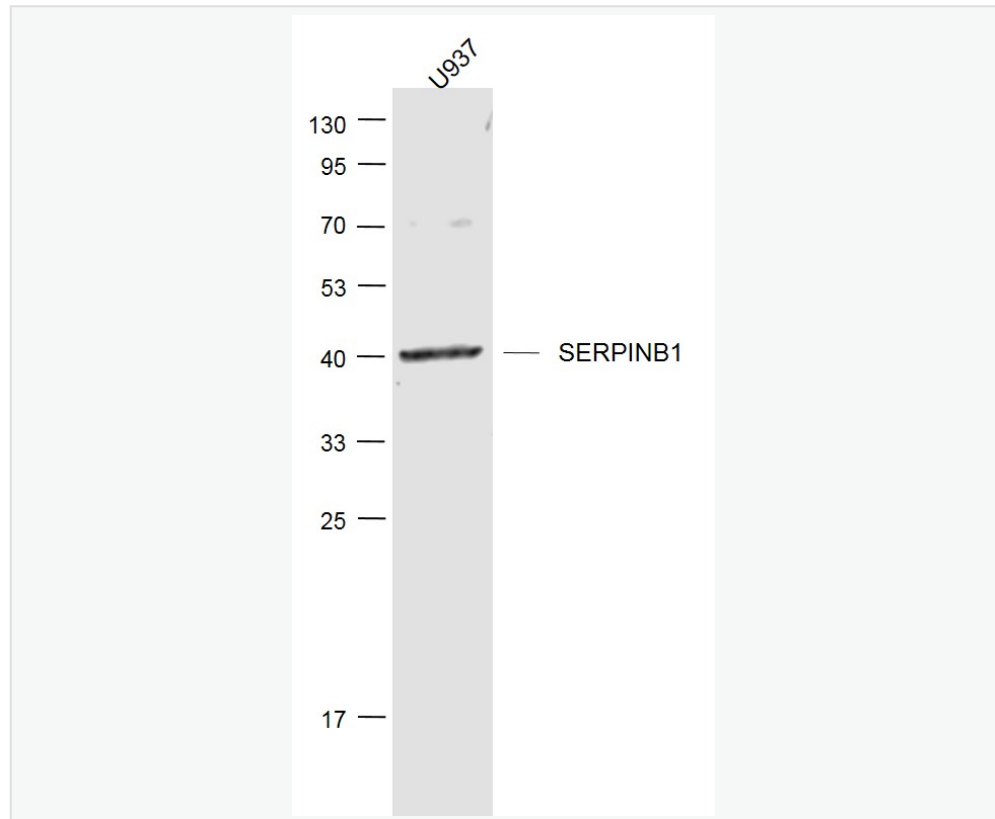
Uterus (Mouse) Lysate at 40 ug

Primary: Anti-EDNRA (SL22144R) at 1/1000 dilution

Secondary: IRDye800CW Goat Anti-Rabbit IgG at 1/20000 dilution

Predicted band size: 47 kD

Observed band size: 47 kD



Sample:

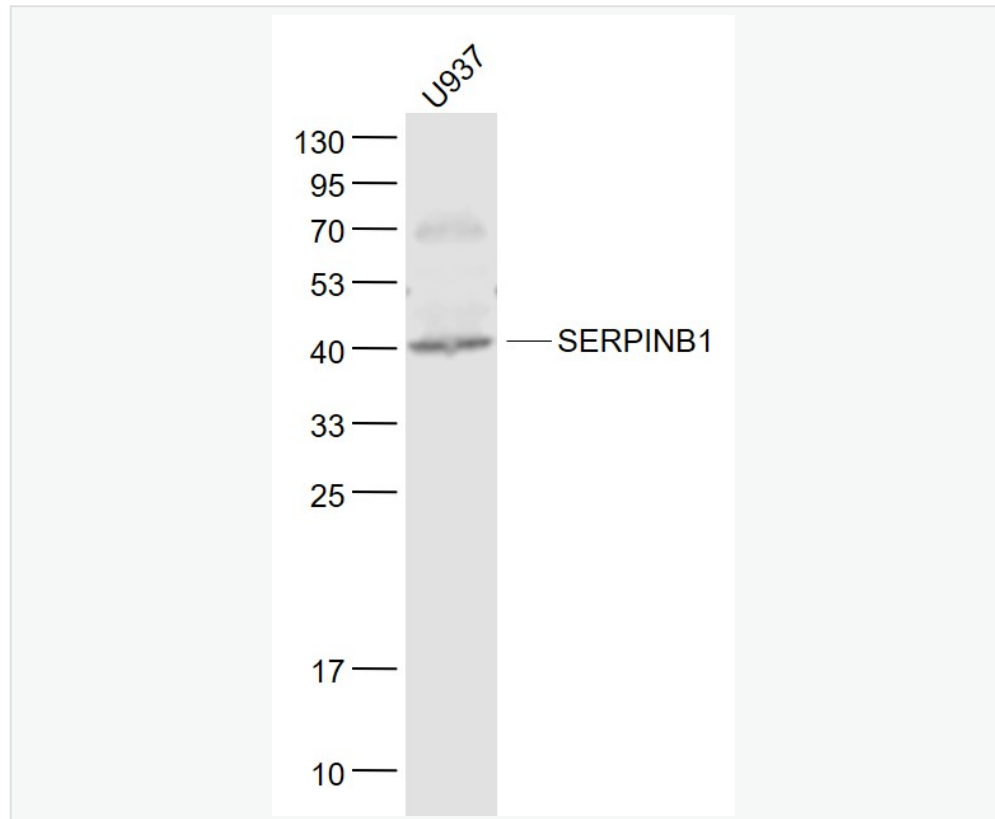
U937(Human) Cell Lysate at 30 ug

Primary: Anti-SERPINB1 (SL22116R) at 1/1000 dilution

Secondary: IRDye800CW Goat Anti-Rabbit IgG at 1/20000 dilution

Predicted band size: 43 kD

Observed band size: 43 kD



Sample:

U937(Human) Cell Lysate at 30 ug

Primary: Anti- SERPINB1 (SL22116R) at 1/1000 dilution

Secondary: IRDye800CW Goat Anti-Rabbit IgG at 1/20000 dilution

Predicted band size: 43 kD

Observed band size: 40 kD