

Rabbit Anti-Galectin 3 antibody

SL20699R

Product Name [KO validated anti] Galectin 3

Chinese Name 半乳糖凝集素 3 抗体

Alias Galectin-3; 35 kDa lectin; Carbohydrate binding protein 35; CBP 35; CBP35; GAL 3; GAL3; GAL-3; Galactose specific lectin 3; Galactose-specific lectin 3; Galactoside binding protein; Galactoside-binding protein; GALBP; Galectin3 internal gene,included; Galectin3; GALIG; GBP; IgE binding protein; IgE-binding protein; L 31; L 34; L-34 galactoside-binding lectin; L31; Laminin binding protein; Laminin-binding protein; Lectin galactose binding soluble 3; Lectin galactoside binding soluble 3; Lectin L 29; Lectin L-29; Lectin, galactose binding, soluble 3; LGALS 3; LGALS2; LGALS3; LGALS3 protein; MAC 2 antigen; Mac-2; MAC2; Macrophage galactose-specific lectin; MGC105387; LEG3_HUMAN.

Research Area Tumour Cell biology immunology Apoptosis Cell adhesion molecule

Immunogen Species Rabbit

Clonality Polyclonal

React Species Human(predicted:Rat)

WB=1:500-2000,ICC/IF=1:100-500,Flow-Cyt=1ug/Test

Applications not yet tested in other applications.
optimal dilutions/concentrations should be determined by the end user.

Theoretical molecular weight 29kDa

Cellular localization The nucleus cytoplasmic Secretory protein

Form Liquid

Concentration 1mg/ml

immunogen KLH conjugated synthetic peptide derived from human Galectin 3: 121-200/250

Lsotype IgG

Purification affinity purified by Protein A

Buffer Solution 1M TBS(pH7.4) with 1% BSA, 3% Proclin300 and 50% Glycerol.



Storage	Shipped at 4°C. Store at -20 °C for one year. Avoid repeated freeze/thaw cycles.
Attention	This product as supplied is intended for research use only, not for use in human, therapeutic or diagnostic applications.
PubMed	PubMed This gene encodes a member of the galectin family of carbohydrate binding proteins. Members of this protein family have an affinity for beta-galactosides. The encoded protein is characterized by an N-terminal proline-rich tandem repeat domain and a single C-terminal carbohydrate recognition domain. This protein can self-associate through the N-terminal domain allowing it to bind to multivalent saccharide ligands. This protein localizes to the extracellular matrix, the cytoplasm and the nucleus. This protein plays a role in numerous cellular functions including apoptosis, innate immunity, cell adhesion and T-cell regulation. Alternate splicing results in multiple transcript variants.[provided by RefSeq, Apr 2010].
Product Detail	<p>Function: Galactose-specific lectin which binds IgE. May mediate with the alpha-3, beta-1 integrin the stimulation by CSPG4 of endothelial cells migration. Together with DMBT1, required for terminal differentiation of columnar epithelial cells during early embryogenesis. In the nucleus: acts as a pre-mRNA splicing factor. Involved in acute inflammatory responses including neutrophil activation and adhesion, chemoattraction of monocytes macrophages, opsonization of apoptotic neutrophils, and activation of mast cells.</p> <p>Subunit: Probably forms homo- or heterodimers. Interacts with DMBT1 (By similarity). Forms a complex with the ITGA3, ITGB1 and CSPG4. Interacts with LGALS3BP, LYPD3, CYHR1 and UACA.</p> <p>Subcellular Location: Cytoplasm. Nucleus. Secreted. Note=Secreted by a non-classical secretory pathway and associates with the cell surface.</p> <p>Tissue Specificity: A major expression is found in the colonic epithelium. It is also abundant in the activated macrophages.</p> <p>Similarity: Contains 1 galectin domain.</p> <p>SWISS: P17931</p> <p>Gene ID:</p>

3958

Database links:

[Entrez Gene: 3958](#) Human

[Entrez Gene: 16854](#) Mouse

[Entrez Gene: 83781](#) Rat

[Omim: 153619](#) Human

[SwissProt: P17931](#) Human

[SwissProt: P16110](#) Mouse

[SwissProt: P08699](#) Rat

[Unigene: 531081](#) Human

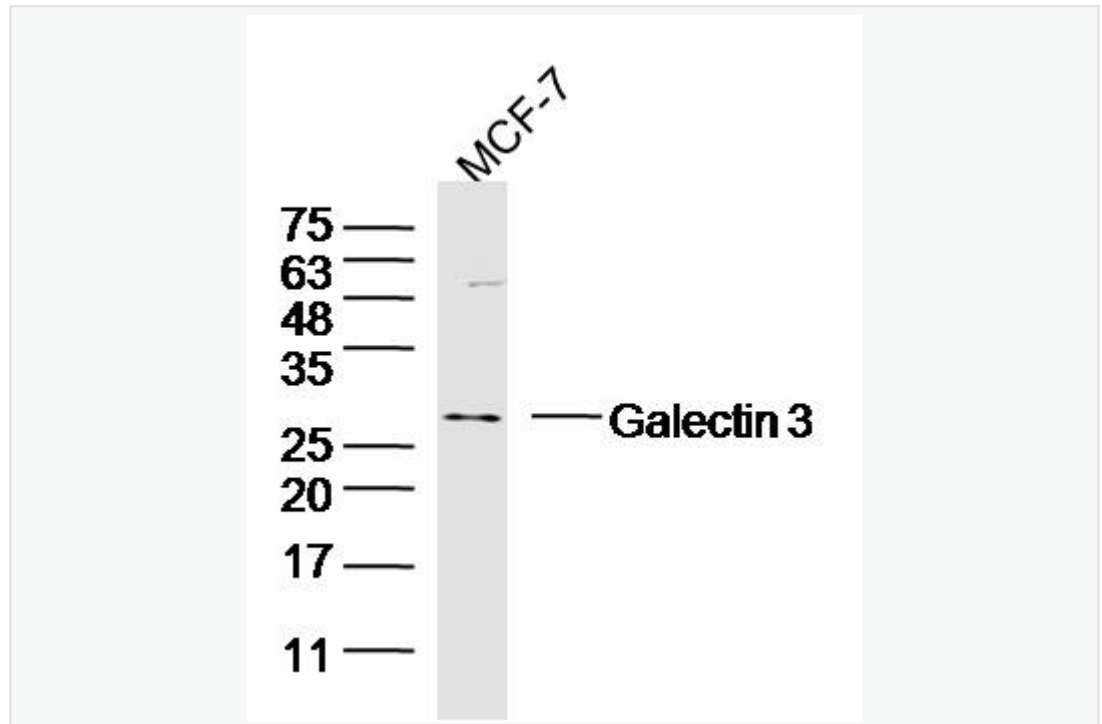
[Unigene: 248615](#) Mouse

[Unigene: 764](#) Rat

Galectin-3 是 Galectin（半乳凝素）家族的一员，能识别 glycoprotein 和糖脂的特定低聚糖结构，参与多种生理和病理过程，包括细胞生长和凋亡、细胞黏附、新生血管形成和 Tumour 浸润与转移等。Galectin-3 在 Tumour 的发生、发展及转移中起重要作用。

Galectin-3 在某些 Tumour 组织中高表达，其在不同类型 Tumour，如结直肠癌、胃癌、胰腺癌、甲状腺癌及肺癌等患者中的高表达水平，与低生存、Tumour 复发、预后差及对化疗药物敏感性降低相关对于某些 Tumour，Galectin-3 有可能成为一个有价值的诊断标志和治疗靶点。

Product
Picture



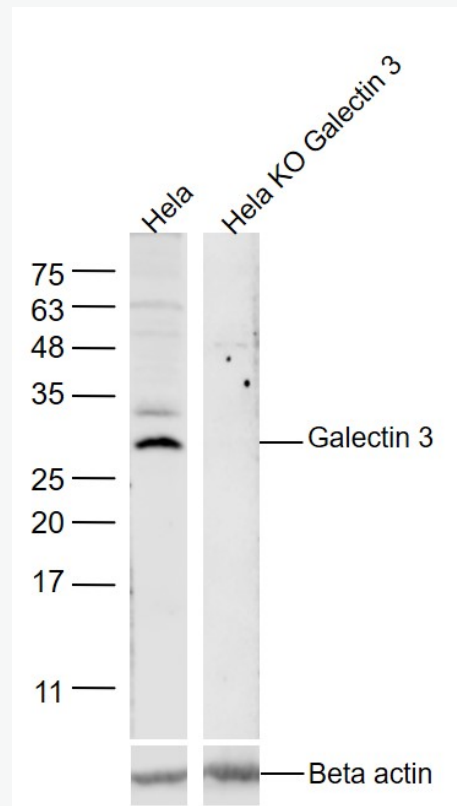
Sample:MCF-7(human) Cell Lysate at 40 ug

Primary: Anti-Galectin 3 (SL20699R) at 1/300 dilution

Secondary: IRDye800CW Goat Anti-Rabbit IgG at 1/20000 dilution

Predicted band size: 29 kD

Observed band size: 27 kD



Sample:

HeLa(Human) Cell Lysate at 30 ug

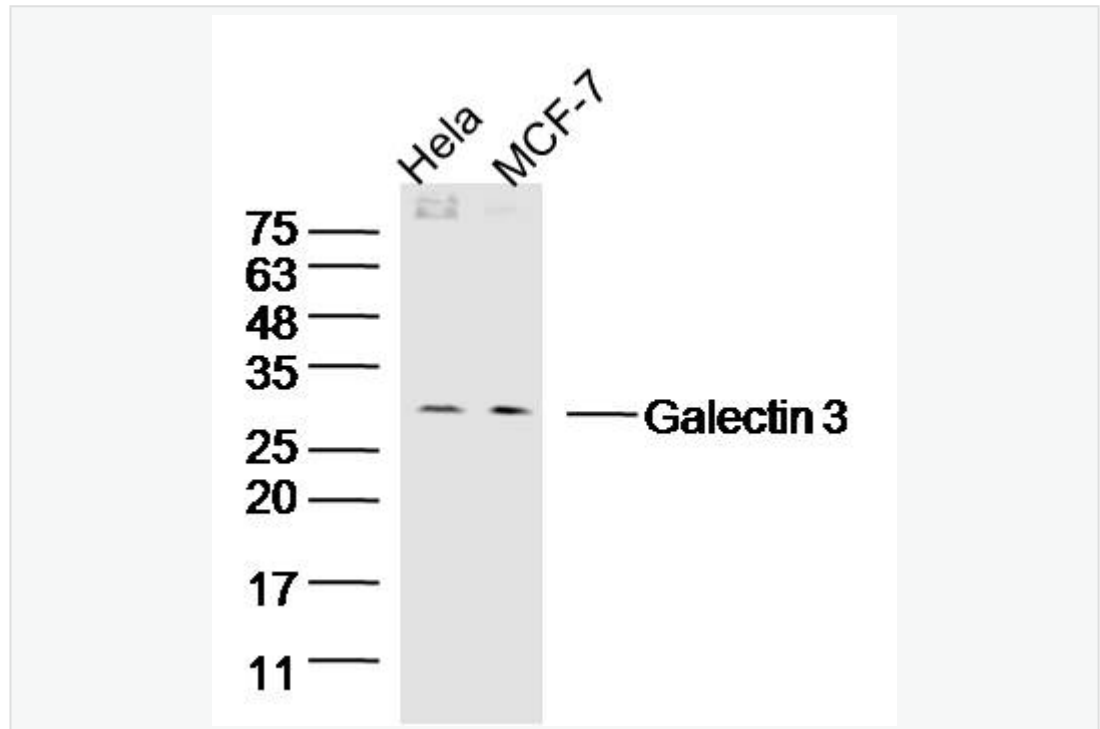
HeLa KO Galectin3 (Human) Cell Lysate at 30 ug

Primary: Anti- Galectin3 (SL20699R) at 1/1000 dilution

Secondary: IRDye800CW Goat Anti-Rabbit IgG at 1/20000 dilution

Predicted band size: 29 kD

Observed band size: 29 kD



Sample:

Hela Cell (Human) Lysate at 40 ug

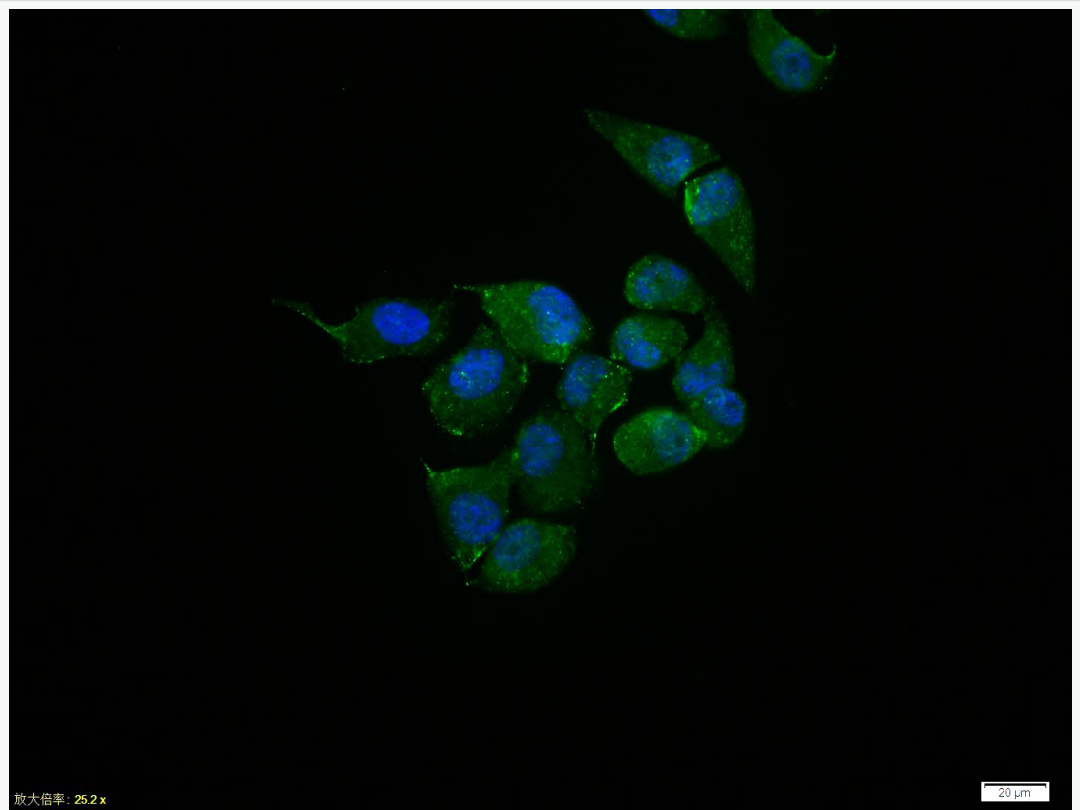
MCF-7 Cell (Human) Lysate at 40 ug

Primary: Anti- Galectin 3 (SL20699R) at 1/300 dilution

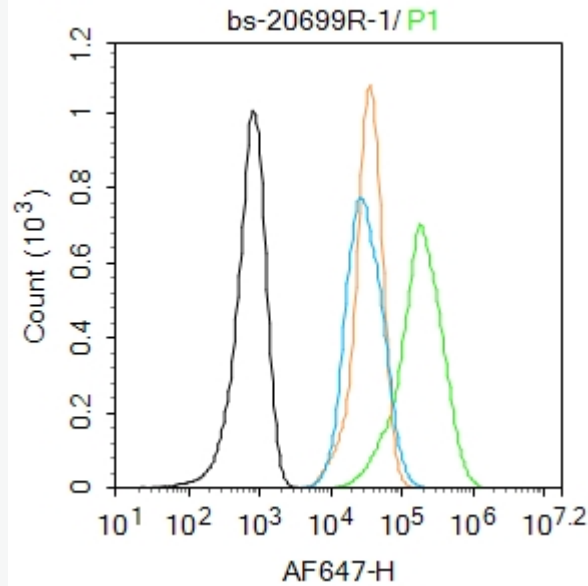
Secondary: IRDye800CW Goat Anti-Rabbit IgG at 1/20000 dilution

Predicted band size: 29 kD

Observed band size: 29 kD



HeLa cell; 4% Paraformaldehyde-fixed; Triton X-100 at room temperature for 20 min; Blocking buffer (normal goat serum, C-0005) at 37°C for 20 min; Antibody incubation with (Galectin 3) polyclonal Antibody, Unconjugated (SL20699R) 1:100, 90 minutes at 37°C; followed by a conjugated Goat Anti-Rabbit IgG antibody at 37°C for 90 minutes, DAPI (blue, C02-04002) was used to stain the cell nuclei.



Blank control:A431.

Primary Antibody (green line): Rabbit Anti-Galectin 3 antibody (SL20699R)

Dilution: $1\mu\text{g}/10^6$ cells;

Isotype Control Antibody (orange line): Rabbit IgG .

Secondary Antibody : Goat anti-rabbit IgG-AF647

Dilution: $1\mu\text{g}/\text{test}$.

Protocol

The cells were fixed with 4% PFA (10min at room temperature)and then permeabilized with 90% ice-cold methanol for 20 min at -20°C .The cells were then incubated in 5%BSA to block non-specific protein-protein interactions for 30 min at room temperature .Cells stained with Primary Antibody for 30 min at room temperature. The secondary antibody used for 40 min at room temperature.



SunLong Biotech Co.,LTD
Tel: 0086-571-56623320 Fax:0086-571-56623318
E-mail:sales@sunlongbiotech.com
www.sunlongbiotech.com

Acquisition of 20,000 events was performed.