



Rabbit Anti-GRK2 antibody

SL20551R

Product Name GRK2**Chinese Name** G 蛋白偶合受体激酶 2 抗体**Alias** G-protein coupled receptor kinase 2; ADRBK 1; ADRBK1; Adrenergic beta receptor kinase 1; BARK 1; BARK; BARK1; Beta adrenergic receptor kinase 1; Beta ARK 1; Beta ARK1; G Protein Coupled Receptor Kinase 2; G protein dependent receptor kinase 2; FLJ16718; GRK 2; ARBK1_HUMAN.**Research Area** immunology Kinases and Phosphatases**Immunogen Species** Rabbit**Clonality** Polyclonal**React Species** Human,Mouse(predicted:Rat,Dog,Pig,Cow,Rabbit)**Applications** IHC-P=1:100-500,IHC-F=1:100-500,ICC/IF=1:100-500,IF=1:100-500 (Paraffin sections need antigen repair)
not yet tested in other applications.
optimal dilutions/concentrations should be determined by the end user.**Theoretical molecular weight** 76kDa**Cellular localization** cytoplasmic**Form** Liquid**Concentration** 1mg/ml**immunogen** KLH conjugated synthetic peptide derived from human GRK2: 1-100/689**Lsotype** IgG**Purification** affinity purified by Protein A**Buffer Solution** Human,Mouse(predicted:Rat,Dog,Pig,Cow,Rabbit)1M TBS(pH7.4) with 1% BSA,

Human,Mouse(predicted:Rat,Dog,Pig,Cow,Rabbit)3% Proclin300 and 50% Glycerol.

Storage Shipped at 4°C. Store at -20 °C for one year. Avoid repeated freeze/thaw cycles.**Attention** This product as supplied is intended for research use only, not for use in human, therapeutic or diagnostic applications.

PubMed

[PubMed](#)

The product of this gene phosphorylates the beta-2-adrenergic receptor and appears to mediate agonist-specific desensitization observed at high agonist concentrations. This protein is an ubiquitous cytosolic enzyme that specifically phosphorylates the activated form of the beta-adrenergic and related G-protein-coupled receptors. Abnormal coupling of beta-adrenergic receptor to G protein is involved in the pathogenesis of the failing heart. [provided by RefSeq].

Function:

Specifically phosphorylates the agonist-occupied form of the beta-adrenergic and closely related receptors, probably inducing a desensitization of them. Key regulator of LPAR1 signaling. Competes with RALA for binding to LPAR1 thus affecting the signaling properties of the receptor. Desensitizes LPAR1 and LPAR2 in a phosphorylation-independent manner.

Subunit:

Interacts with GIT1 (By similarity). Interacts with, and phosphorylates chemokine-stimulated CCR5. Interacts with ARRB1. Interacts with LPAR1 and LPAR2. Interacts with RALA in response to LPAR1 activation. ADRBK1 and RALA mutually inhibit each other's binding to LPAR1.

**Product
Detail**

Tissue Specificity:

Expressed in peripheral blood leukocytes.

Similarity:

Belongs to the protein kinase superfamily. AGC Ser/Thr protein kinase family. GPRK subfamily.

Contains 1 AGC-kinase C-terminal domain.

Contains 1 PH domain.

Contains 1 protein kinase domain.

Contains 1 RGS domain.

SWISS:

P25098

Gene ID:

156

Database links:

[Entrez Gene: 156](#) Human

[Entrez Gene: 25238](#) Rat

[Omim: 109635](#) Human

[SwissProt: P25098](#) Human

[SwissProt: Q99MK8](#) Mouse

[SwissProt: P26817](#) Rat

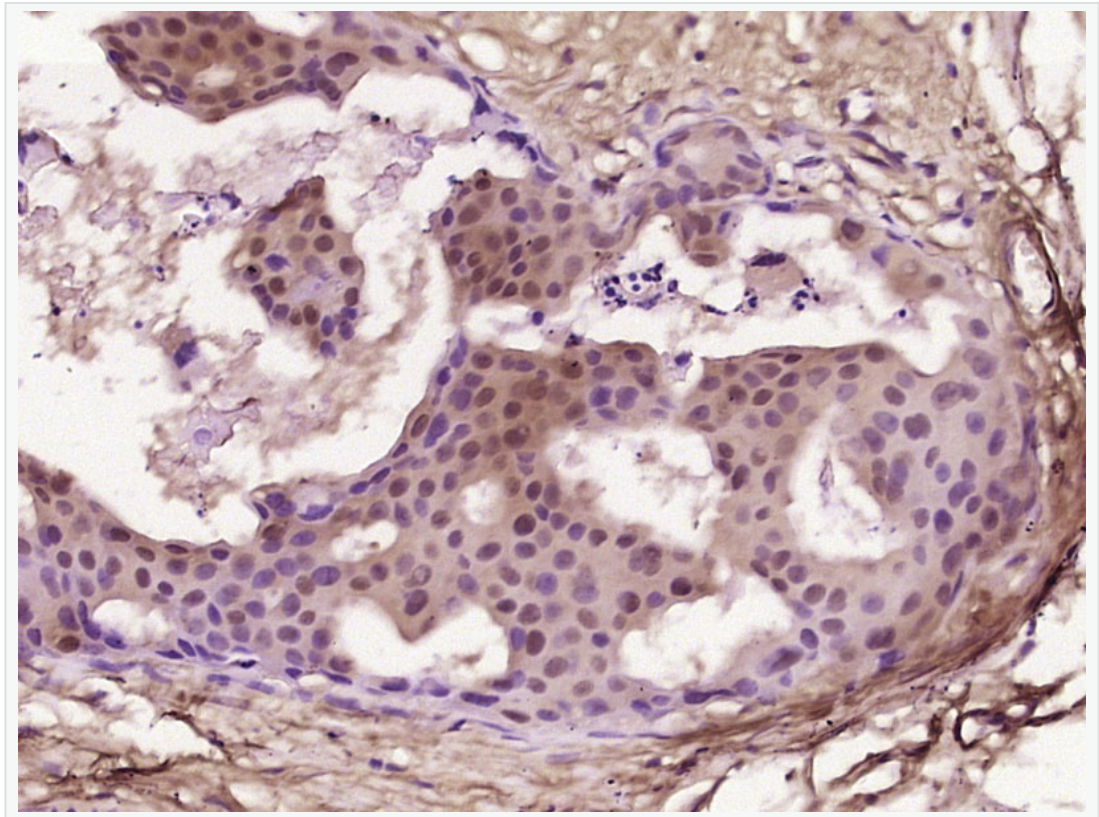
[Unigene: 83636](#) Human

[Unigene: 254144](#) Mouse

[Unigene: 13010](#) Rat

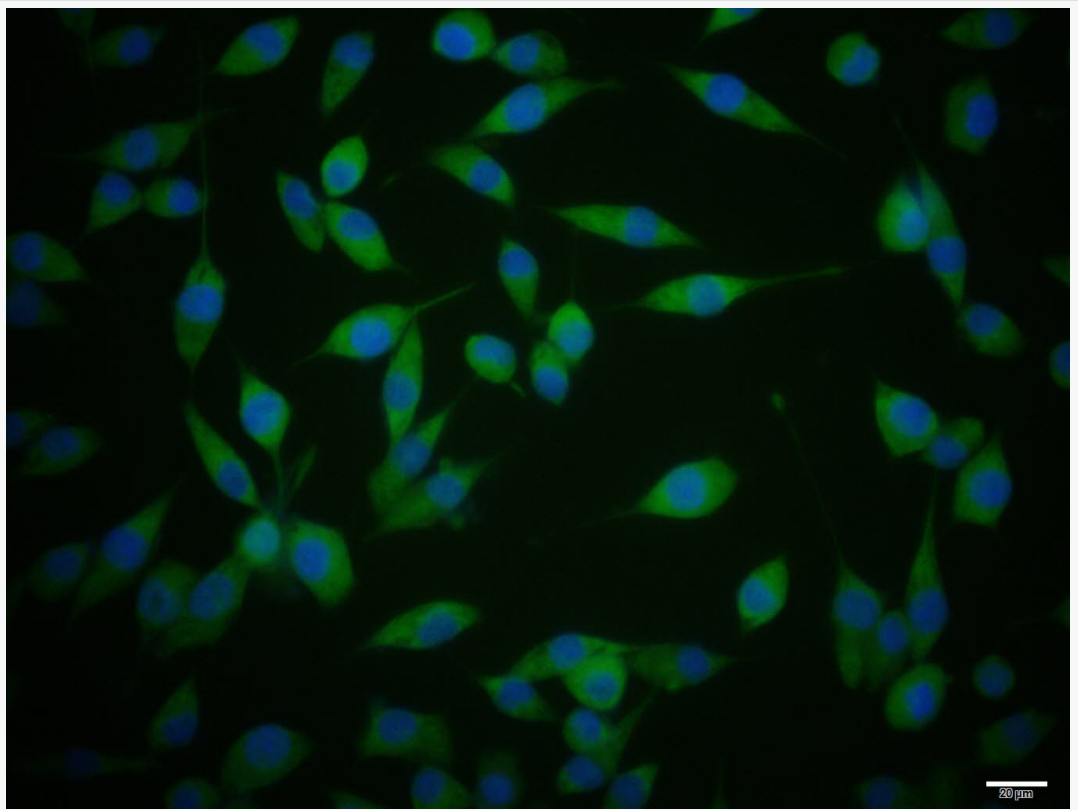
G protein-coupled receptor 激酶 2(GRK2)是催化激动剂诱导的 GPCR 磷酸化以及启动 GPCR 脱敏的关键激酶,主要用于 GRKThe cell membrane 转位和对 GRK 功能的影响.

**Product
Picture**



Paraformaldehyde-fixed, paraffin embedded (Human breast carcinoma); Antigen

retrieval by boiling in sodium citrate buffer (pH6.0) for 15min; Block endogenous peroxidase by 3% hydrogen peroxide for 20 minutes; Blocking buffer (normal goat serum) at 37°C for 30min; Antibody incubation with (GRK2) Polyclonal Antibody, Unconjugated (SL20551R) at 1:400 overnight at 4°C, followed by operating according to SP Kit(Rabbit) (sp-0023) instructions and DAB staining.



NIH/3T3 cell; 4% Paraformaldehyde-fixed; Triton X-100 at room temperature for 20 min; Blocking buffer (normal goat serum, C-0005) at 37°C for 20 min; Antibody incubation with (GRK2) polyclonal Antibody, Unconjugated (SL20551R) 1:100, 90 minutes at 37°C; followed by a conjugated Goat



Anti-Rabbit IgG antibody at 37°C for 90 minutes, DAPI (blue, C02-04002) was used to stain the cell nuclei.