



Rabbit Anti-CD68 antibody

SL1432R

Product Name CD68

Chinese Name CD68 抗体

Alias CD 68; CD68 antigen; CD68 molecule; DKFZp686M18236; GP110; Macrophage antigen CD68 (microsialin); macrosialin; SCARD1; Scavenger receptor class D member 1; macrosialin isoform A precursor; CD68_HUMAN; Macrosialin; Gp110; scavenger receptor class D, member 1; macrophage antigen CD68; LAMP4.

Research Area immunology Neurobiology

Immunogen Species Rabbit

Clonality Polyclonal

React Species Human Mouse Rat

Applications WB=1:500-2000 (Paraffin sections need antigen repair)
not yet tested in other applications.
optimal dilutions/concentrations should be determined by the end user.

Theoretical molecular weight 37kDa

Detection molecular weight 110-140KDa

Cellular localization cytoplasmic The cell membrane

Form Liquid

Concentration 1mg/ml

immunogen KLH conjugated synthetic peptide derived from human CD68: 1-130/354
<Extracellular>

Lsotype IgG

Purification affinity purified by Protein A

Buffer Solution Human,Mouse,Rat1M TBS(pH7.4) with 1% BSA, Human,Mouse,Rat3% Proclin300 and 50% Glycerol.



Storage	Shipped at 4°C. Store at -20 °C for one year. Avoid repeated freeze/thaw cycles.
Attention	This product as supplied is intended for research use only, not for use in human, therapeutic or diagnostic applications.
PubMed	PubMed This gene encodes a 110-kD transmembrane glycoprotein that is highly expressed by human monocytes and tissue macrophages. It is a member of the lysosomal/endosomal-associated membrane glycoprotein (LAMP) family. The protein primarily localizes to lysosomes and endosomes with a smaller fraction circulating to the cell surface. It is a type I integral membrane protein with a heavily glycosylated extracellular domain and binds to tissue- and organ-specific lectins or selectins. The protein is also a member of the scavenger receptor family. Scavenger receptors typically function to clear cellular debris, promote phagocytosis, and mediate the recruitment and activation of macrophages. Alternative splicing results in multiple transcripts encoding different isoforms. [provided by RefSeq, Jul 2008]
	Function: Could play a role in phagocytic activities of tissue macrophages, both in intracellular lysosomal metabolism and extracellular cell-cell and cell-pathogen interactions. Binds to tissue- and organ-specific lectins or selectins, allowing homing of macrophage subsets to particular sites. Rapid recirculation of CD68 from endosomes and lysosomes to the plasma membrane may allow macrophages to crawl over selectin-bearing substrates or other cells.
Product Detail	Subcellular Location: Isoform Short: Cell membrane; Single-pass type I membrane protein. Isoform Long: Endosome membrane; Single-pass type I membrane protein. Lysosome membrane; Single-pass type I membrane protein. Tissue Specificity: Highly expressed by blood monocytes and tissue macrophages. Also expressed in lymphocytes, fibroblasts and endothelial cells. Expressed in many tumor cell lines which could allow them to attach to selectins on vascular endothelium, facilitating their dissemination to secondary sites. Post-translational modifications: N- and O-glycosylated Similarity: Belongs to the LAMP family. SWISS: P34810

Gene ID:
968

Database links:

[Entrez Gene: 968](#) Human

[Entrez Gene: 12514](#) Mouse

[Omim: 153634](#) Human

[SwissProt: P34810](#) Human

[SwissProt: P31996](#) Mouse

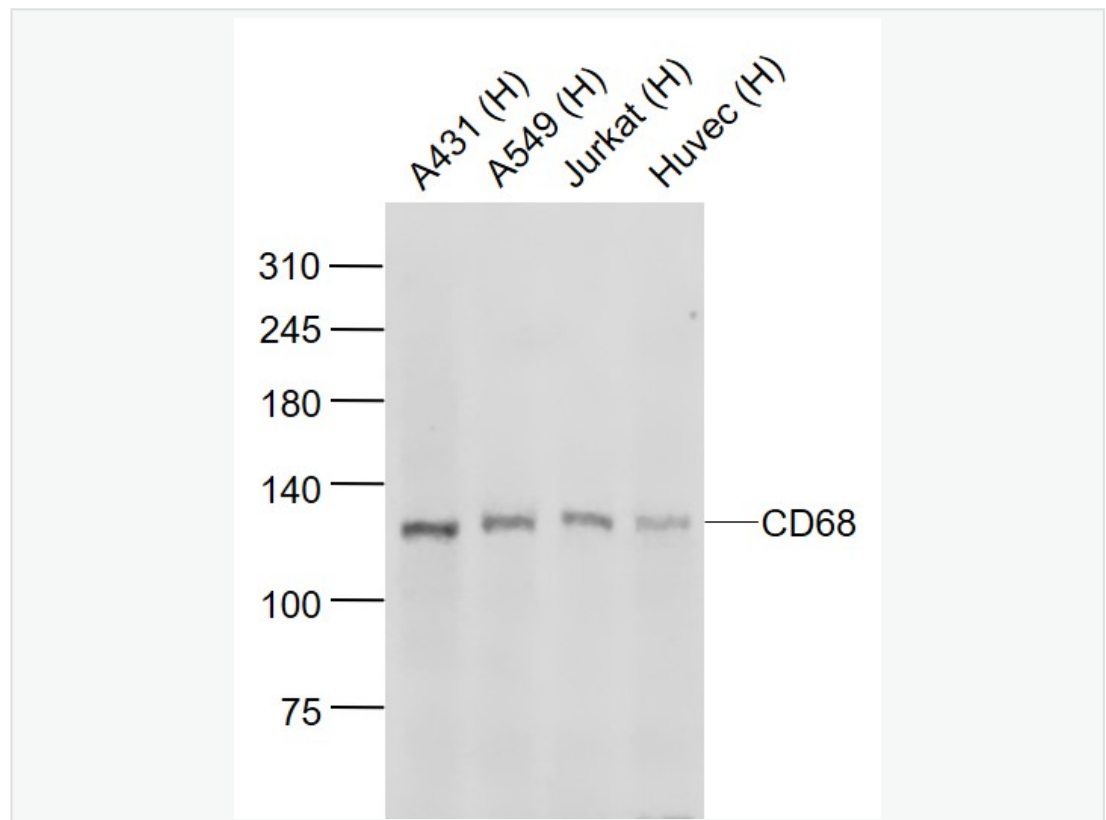
[Unigene: 647419](#) Human

[Unigene: 15819](#) Mouse

巨噬细胞 Maker

CD68 为巨噬细胞抗原又称酸性溶霉菌 glycoprotein，表达在单核、巨嗜、粒细胞和一些梭形细胞呈阳性表达。

**Product
Picture**



Sample:

Lane 1: A431 (Human) Cell Lysate at 30 ug

Lane 2: A549 (Human) Cell Lysate at 30 ug

Lane 3: Jurkat (Human) Cell Lysate at 30 ug

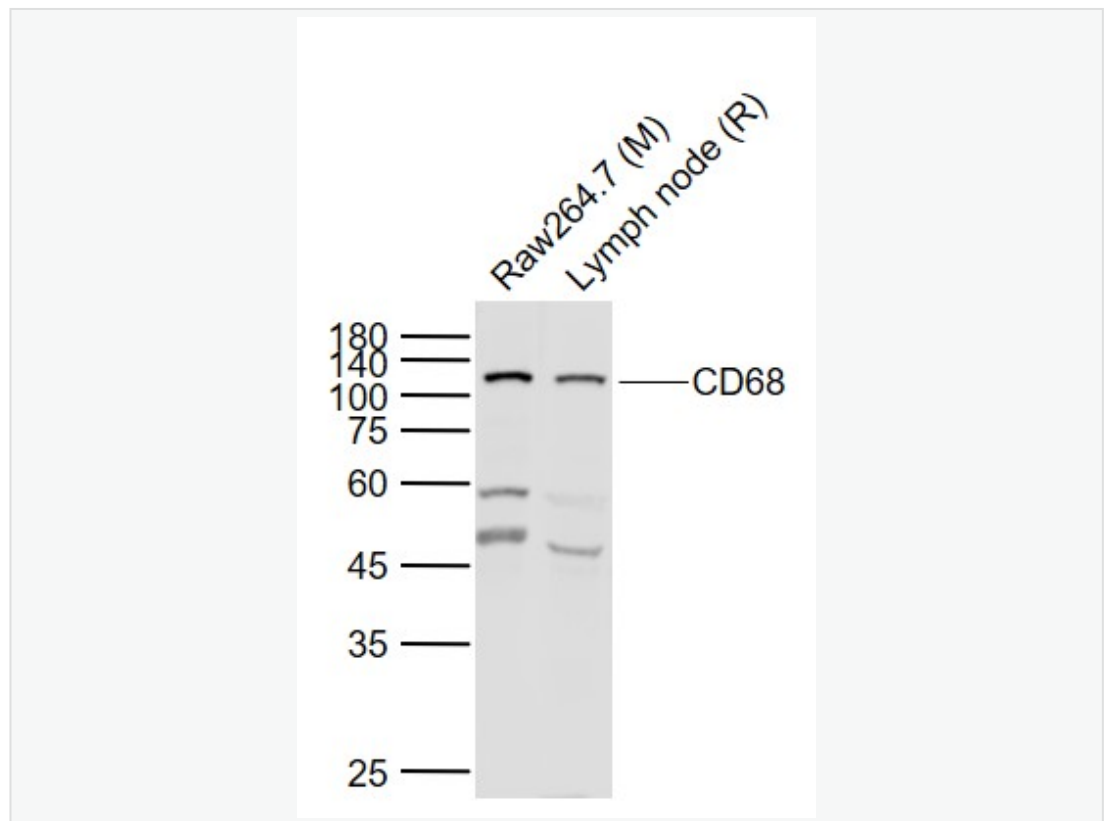
Lane 4: Huvec (Human) Cell Lysate at 30 ug

Primary: Anti-CD68 (SL1432R) at 1/500 dilution

Secondary: IRDye800CW Goat Anti-Rabbit IgG at 1/20000 dilution

Predicted band size: 110/185-200 kD

Observed band size: 110 kD



Sample:

Lane 1: Raw264.7 (Mouse) Cell Lysate at 30 ug

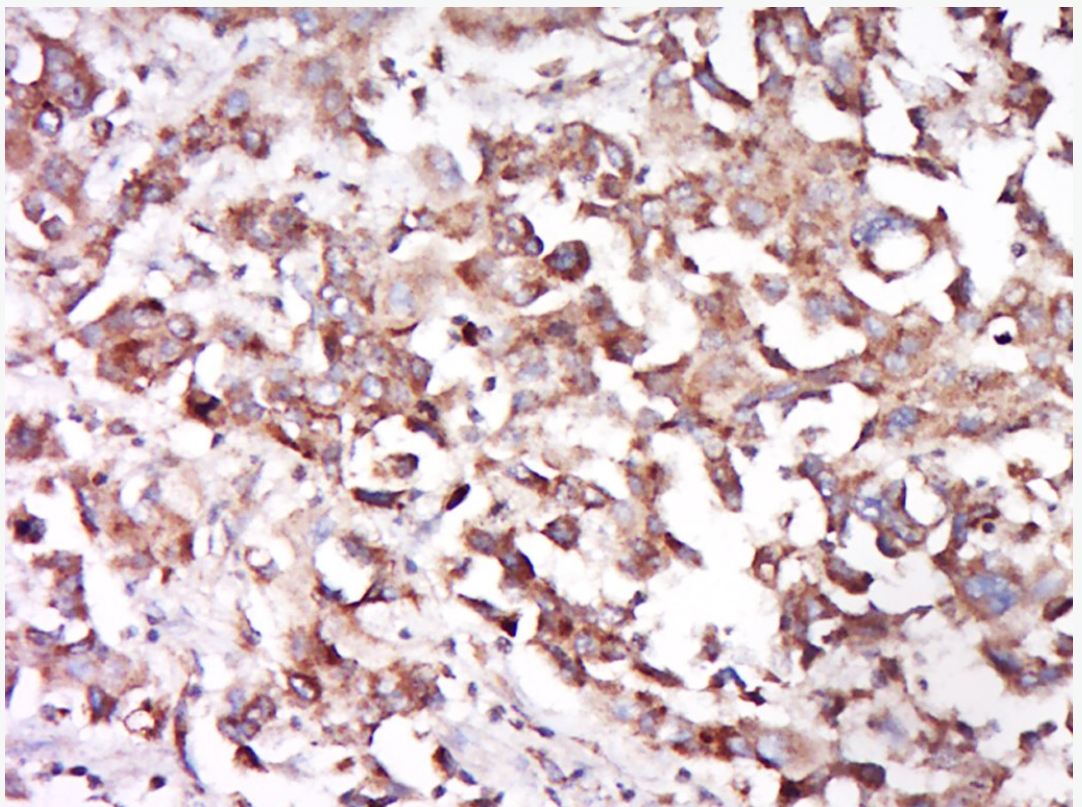
Lane 2: Lymph node (Rat) Cell Lysate at 30 ug

Primary: Anti-CD68 (SL1432R) at 1/1000 dilution

Secondary: IRDye800CW Goat Anti-Rabbit IgG at 1/20000 dilution

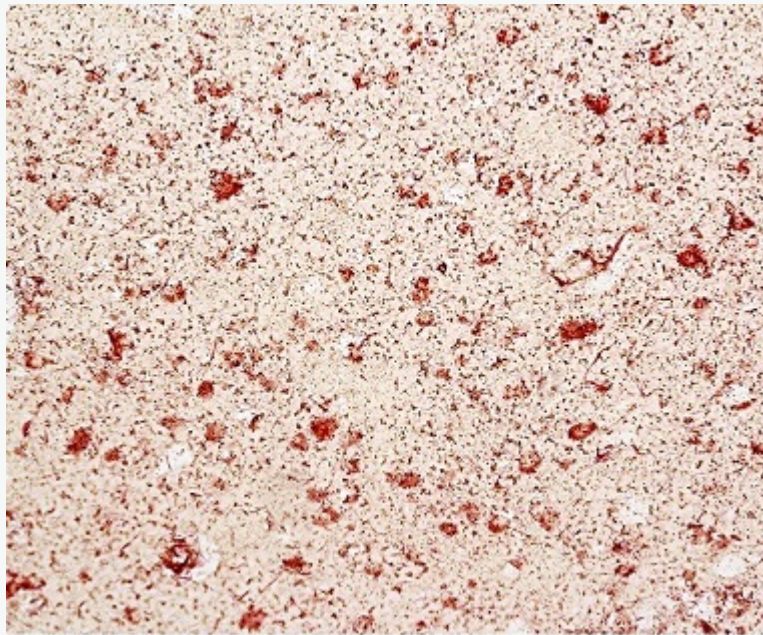
Predicted band size: 110/185-200 kD

Observed band size: 110 kD



Tissue/cell: human mammary cancer; 4% Paraformaldehyde-fixed and paraffin-embedded;

Antigen retrieval: citrate buffer (Human,Mouse,Rat1M, pH 6.0), Boiling bathing for 15min; Block endogenous peroxidase by 3% Hydrogen peroxide for 30min; Blocking buffer (normal goat serum,C-0005) at 37°C for 20 min; Incubation: Anti-CD68 Polyclonal Antibody, Unconjugated(SL1432R) 1:500, overnight at 4°C, followed by conjugation to the secondary antibody(SP-0023) and DAB(C-0010) staining



This image was generously provided by Amanda Brown, Ph.D. from Johns Hopkins University School of Medicine. Paraffin embedded human brain tissue labeled with Rabbit Anti-CD68 Polyclonal Antibody, Unconjugated (SL1432R) at 1:50 followed by conjugation to the secondary antibody and Permanent Fast Red Quanto staining



SunLong Biotech Co.,LTD
Tel: 0086-571-56623320 Fax:0086-571-56623318
E-mail:sales@sunlongbiotech.com
www.sunlongbiotech.com
