

## Rabbit Anti-DHX37 antibody

SL14320R

**Product Name** DHX37

**Chinese Name** DHX37 蛋白抗体

**Alias** DDX37; DEAH (Asp-Glu-Ala-His) box polypeptide 37; DEAH box protein 37; FLJ41974; Gm1050; DHX37\_HUMAN; Gm451; KIAA1517; MGC2695; MGC4322; MGC46245; MGC90028; mKIAA1517; Probable ATP dependent RNA helicase DHX37.

**Research Area** Cell biology Developmental biology Cell differentiation Epigenetics

**Immunogen Species** Rabbit

**Clonality** Polyclonal

**React Species** Human, Rat, (predicted: Mouse, Dog, Horse, )

**Applications** WB=1:500-2000,IHC-P=1:100-500,IHC-F=1:100-500,IF=1:100-500 (Paraffin sections need antigen repair)  
not yet tested in other applications.  
optimal dilutions/concentrations should be determined by the end user.

**Theoretical molecular weight** 129kDa

**Cellular localization** The nucleus cytoplasmic

**Form** Liquid

**Concentration** 1mg/ml

**immunogen** KLH conjugated synthetic peptide derived from human DHX37: 51-150/1157

**Lsotype** IgG

**Purification** affinity purified by Protein A

**Buffer Solution** 1M TBS(pH7.4) with 1% BSA, 3% Proclin300 and 50% Glycerol.

**Storage** Shipped at 4°C. Store at -20 °C for one year. Avoid repeated freeze/thaw cycles.

**Attention** This product as supplied is intended for research use only, not for use in human, therapeutic or diagnostic applications.

**PubMed**

[PubMed](#)

This gene encodes a DEAD box protein. DEAD box proteins, characterized by the conserved motif Asp-Glu-Ala-Asp (DEAD), are putative RNA helicases. They are implicated in a number of cellular processes involving alteration of RNA secondary structure such as translation initiation, nuclear and mitochondrial splicing, and ribosome and spliceosome assembly. Based on their distribution patterns, some members of this family are believed to be involved in embryogenesis, spermatogenesis, and cellular growth and division. [provided by RefSeq, Jul 2008]

**Function:**

DHX37 is a member of the family of the DEAD box proteins, a group of proteins that present the conserved motif Asp-Glu-Ala-Asp (DEAD). They have a role in RNA translation initiation, nuclear and mitochondrial splicing, and ribosome and spliceosome assembly

**Similarity:**

Belongs to the DEAD box helicase family. DEAH subfamily.  
Contains 1 helicase ATP-binding domain.  
Contains 1 helicase C-terminal domain.

**Product  
Detail**

**SWISS:**

Q8IY37

**Gene ID:**

57647

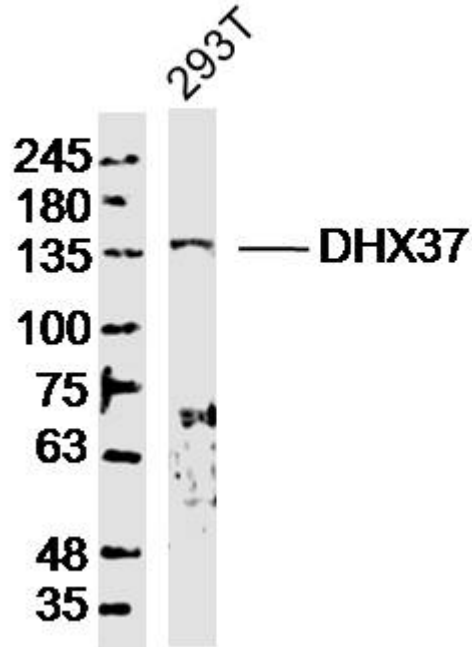
**Database links:**

[Entrez Gene: 57647](#) Human

[Entrez Gene: 208144](#) Mouse

[SwissProt: Q8IY37](#) Human

**Product  
Picture**



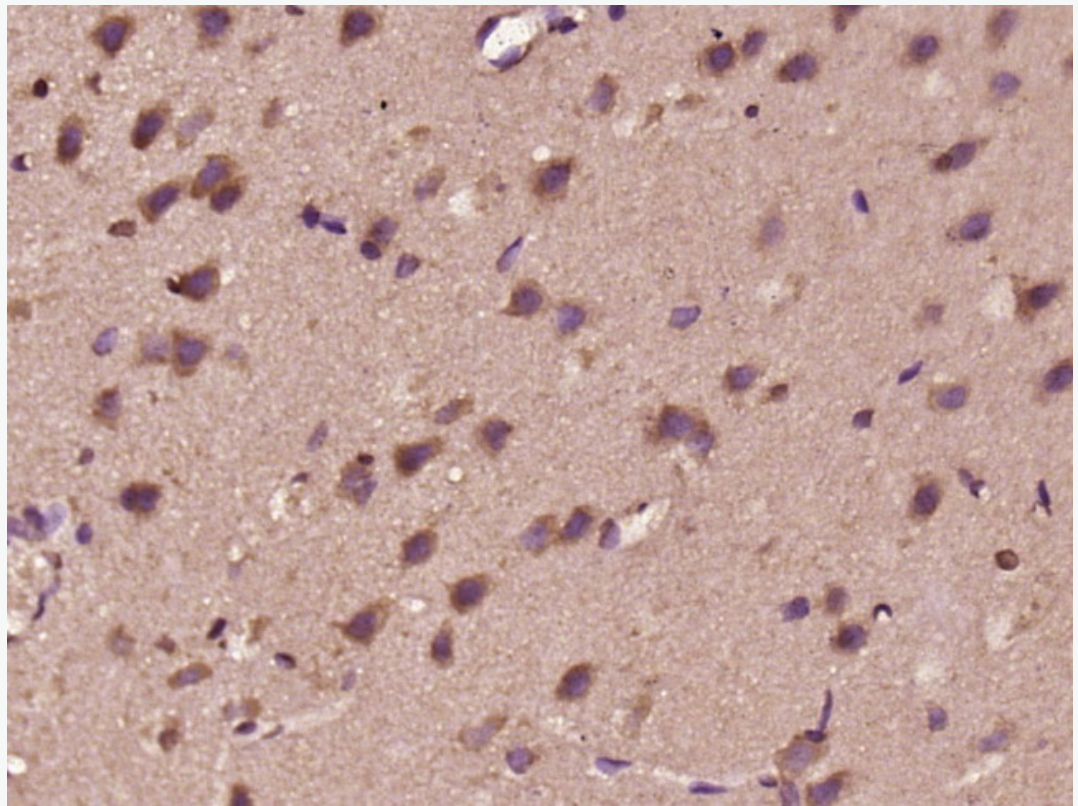
Sample: 293T Cell (Human) Lysate at 40 ug

Primary: Anti-DHX37(SL14320R)at 1/300 dilution

Secondary: IRDye800CW Goat Anti-Rabbit IgG at 1/20000 dilution

Predicted band size: 129kD

Observed band size: 135kD



Paraformaldehyde-fixed, paraffin embedded (rat brain tissue); Antigen retrieval by boiling in sodium citrate buffer (pH6.0) for 15min; Block endogenous peroxidase by 3% hydrogen peroxide for 20 minutes; Blocking buffer (normal goat serum) at 37°C for 30min; Antibody incubation with (DHX37) Polyclonal Antibody, Unconjugated (SL14320R) at 1:400 overnight at 4°C, followed by operating according to SP Kit(Rabbit) (sp-0023) instructions and DAB staining.