



Rabbit Anti-DHX30 antibody

SL14313R

Product Name DHX30**Chinese Name** ATP-依赖的 RNA 解旋酶 30 抗体**Alias** DDX30; DEAH box protein 30; Dhx30; DHX30_HUMAN; FLJ11214; KIAA0890; Putative ATP-dependent RNA helicase DHX30; Ret CoR.**Research Area** Cell biology Developmental biology Cell differentiation Epigenetics**Immunogen Species** Rabbit**Clonality** Polyclonal**React Species** Mouse(predicted:Human,Rat,Dog,Pig,Cow,Horse,Rabbit)**Applications** IHC-P=1:100-500,IHC-F=1:100-500,IF=1:100-500 (Paraffin sections need antigen repair)
not yet tested in other applications.
optimal dilutions/concentrations should be determined by the end user.**Theoretical molecular weight** 134kDa**Cellular localization** cytoplasmic**Form** Liquid**Concentration** 1mg/ml**immunogen** KLH conjugated synthetic peptide derived from human DHX30: 1-100/194**Lsotype** IgG**Purification** affinity purified by Protein A**Buffer Solution** 1M TBS(pH7.4) with 1% BSA, 3% Proclin300 and 50% Glycerol.**Storage** Shipped at 4°C. Store at -20 °C for one year. Avoid repeated freeze/thaw cycles.**Attention** This product as supplied is intended for research use only, not for use in human, therapeutic or diagnostic applications.**PubMed** [PubMed](#)**Product** DEAD box proteins, characterized by the conserved motif Asp-Glu-Ala-Asp (DEAD),

Detail

are putative RNA helicases. They are implicated in a number of cellular processes involving alteration of RNA secondary structure such as translation initiation, nuclear and mitochondrial splicing, and ribosome and spliceosome assembly. Based on their distribution patterns, some members of this DEAD box protein family are believed to be involved in embryogenesis, spermatogenesis, and cellular growth and division. The family member encoded by this gene is a mitochondrial nucleoid protein that associates with mitochondrial DNA. It has also been identified as a component of a transcriptional repressor complex that functions in retinal development, and it is required to optimize the function of the zinc-finger antiviral protein. Alternatively spliced transcript variants have been found for this gene. [provided by RefSeq, Feb 2013]

Subcellular Location:

Cytoplasm and Mitochondrion. Cytoplasm. Mitochondrion matrix > mitochondrion nucleoid.

Post-translational modifications:

Isoform 2 is phosphorylated on Ser-15.

Similarity:

Belongs to the DEAD box helicase family. DEAH subfamily.

Contains 1 DRBM (double-stranded RNA-binding) domain.

Contains 1 helicase ATP-binding domain.

Contains 1 helicase C-terminal domain.

SWISS:

Q7L2E3

Gene ID:

22907

Database links:

[Entrez Gene: 22907](#) Human

[Entrez Gene: 72831](#) Mouse

[Entrez Gene: 367172](#) Rat

[GenBank: NM_138614](#) Human

[SwissProt: Q7L2E3](#) Human

[SwissProt: Q7L2E3-2](#) Human

[SwissProt: Q99PU8](#) Mouse

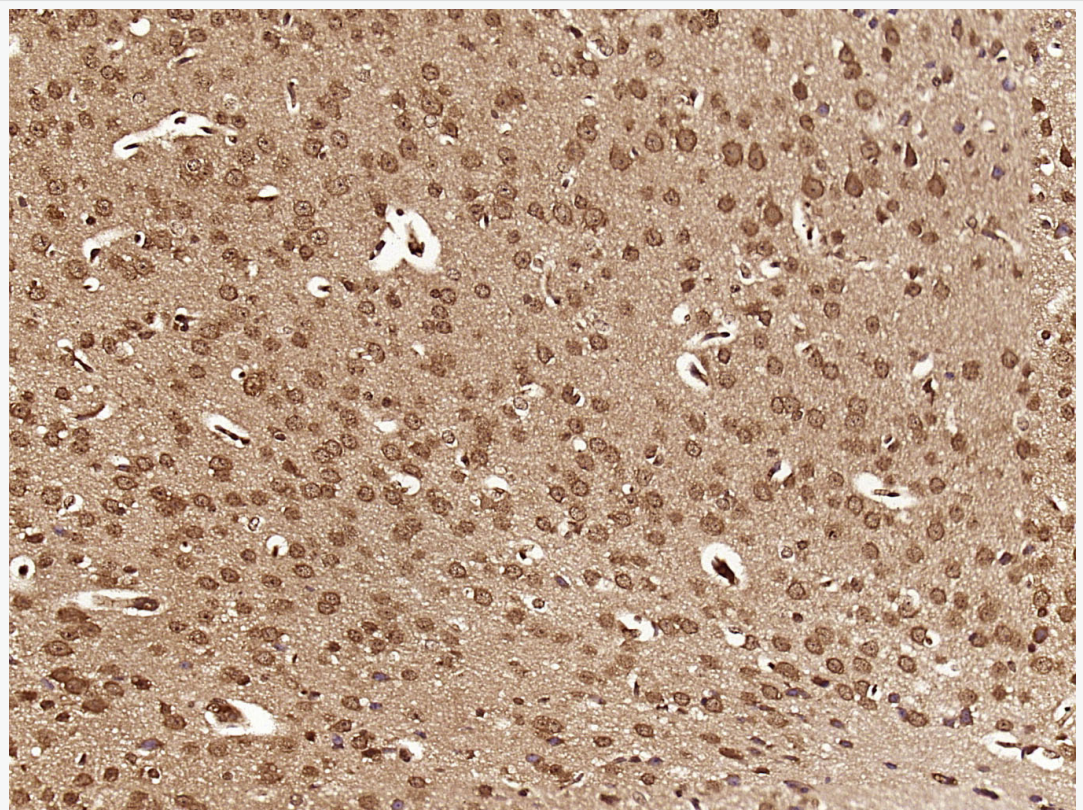
[SwissProt: Q5BJS0](#) Rat

[Unigene: 517948](#) Human

[Unigene: 276305](#) Mouse

[Unigene: 163034](#) Rat

**Product
Picture**



Paraformaldehyde-fixed, paraffin embedded (Mouse brain); Antigen retrieval by boiling in sodium citrate buffer (pH6.0) for 15min; Block endogenous peroxidase by 3% hydrogen peroxide for 20 minutes; Blocking buffer (normal goat serum) at 37°C for 30min; Antibody incubation with (DHX30) Polyclonal Antibody, Unconjugated (SL14313R) at 1:500 overnight at 4°C, followed by a conjugated



SunLong Biotech Co.,LTD
Tel: 0086-571-56623320 Fax:0086-571-56623318
E-mail:sales@sunlongbiotech.com
www.sunlongbiotech.com

secondary (sp-0023) for 20 minutes and DAB staining.