

Rabbit Anti-CLDN1 antibody

SL1428R

Product Name	CLDN1
Chinese Name	紧密连接蛋白 1 抗体
Alias	CLD1_HUMAN; Claudin-1; Claudin 1; Claudin1; CLD1; SEMP1; Senescence-associated epithelial membrane protein; UNQ481/PRO944; ILVASC;
Research Area	Signal transduction Cell adhesion molecule Cytoskeleton
Immunogen Species	Rabbit
Clonality	Polyclonal
React Species	Human,Mouse(predicted:Rat)
Applications	WB=1:500-2000 (Paraffin sections need antigen repair) not yet tested in other applications. optimal dilutions/concentrations should be determined by the end user.
Theoretical molecular weight	23kDa
Cellular localization	The cell membrane
Form	Liquid
Concentration	1mg/ml
immunogen	KLH conjugated synthetic peptide derived from mouse Claudin 1: 121-211/211 <Cytoplasmic>
Lsotype	IgG
Purification	affinity purified by Protein A
Buffer Solution	1M TBS(pH7.4) with 1% BSA, 3% Proclin300 and 50% Glycerol.
Storage	Shipped at 4°C. Store at -20 °C for one year. Avoid repeated freeze/thaw cycles.
Attention	This product as supplied is intended for research use only, not for use in human, therapeutic or diagnostic applications.
PubMed	PubMed
Product	Tight junctions represent one mode of cell-to-cell adhesion in epithelial or endothelial cell

Detail

sheets, forming continuous seals around cells and serving as a physical barrier to prevent solutes and water from passing freely through the paracellular space. These junctions are comprised of sets of continuous networking strands in the outwardly facing cytoplasmic leaflet, with complementary grooves in the inwardly facing extracytoplasmic leaflet. The protein encoded by this gene, a member of the claudin family, is an integral membrane protein and a component of tight junction strands. Loss of function mutations result in neonatal ichthyosis-sclerosing cholangitis syndrome. [provided by RefSeq, Jul 2008]

Function:

Plays a major role in tight junction-specific obliteration of the intercellular space, through calcium-independent cell-adhesion activity.

Subunit:

Can form homo- and heteropolymers with other CLDN. Homopolymers interact with CLDN3, but not CLDN2, homopolymers. Directly interacts with TJP1/ZO-1, TJP2/ZO-2 and TJP3/ZO-3. Interacts with MPDZ and INADL.

Subcellular Location:

Cell junction, tight junction. Cell membrane; Multi-pass membrane protein.

Tissue Specificity:

Widely expressed, with highest levels in liver and kidney.

Similarity:

Belongs to the claudin family.

SWISS:

O88551

Gene ID:

12737

Database links:

[Entrez Gene: 9076](#) Human

[Entrez Gene: 12737](#) Mouse

[Entrez Gene: 65129](#) Rat

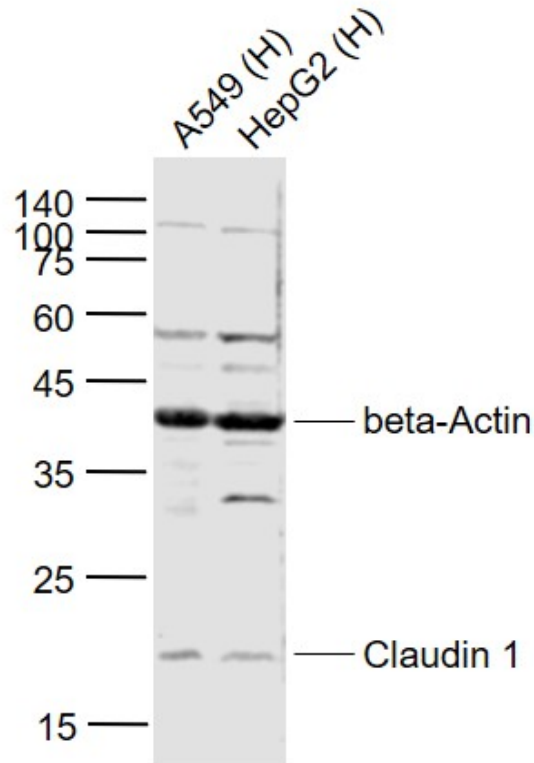
[SwissProt: O95832](#) Human

[SwissProt: O88551](#) Mouse

[SwissProt: P56745](#) Rat

Claudin 1 蛋白是紧密连接区相关的转膜蛋白 Claudin 的家族成员，在构成紧密连接的完整膜蛋白中发挥着一定作用，目前多用于 Tumour 方面的研究。

**Product
Picture**



Sample:

Lane 1: A549 (Human) Cell Lysate at 30 ug

Lane 2: HepG2 (Human) Cell Lysate at 30 ug

Primary:

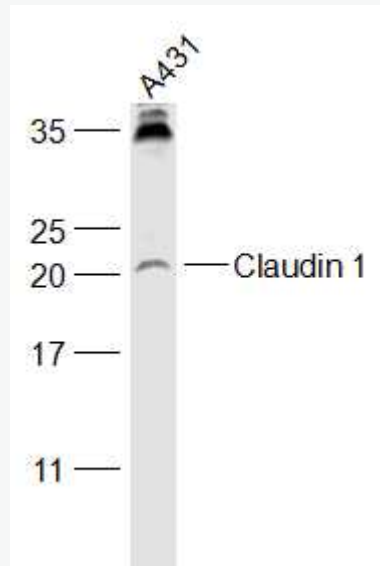
Anti- Claudin 1 (SL1428R) at 1/1000 dilution

Anti- beta-Actin (SL0061R) at 1/2000 dilution

Secondary: IRDye800CW Goat Anti-Rabbit IgG at 1/20000 dilution

Predicted band size: 21 kD

Observed band size: 21 kD



Sample:

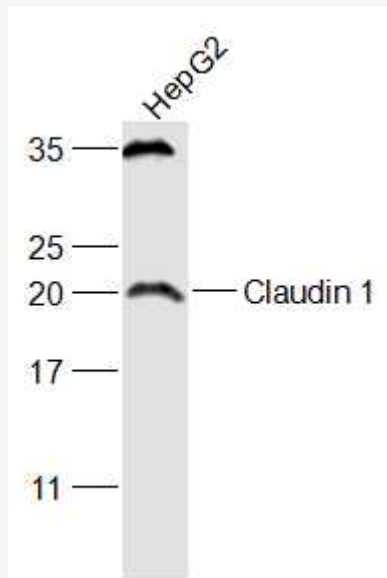
A431(Human) Cell Lysate at 30 ug

Primary: Anti-Claudin 1 (SL1428R) at 1/1000 dilution

Secondary: IRDye800CW Goat Anti-Rabbit IgG at 1/20000 dilution

Predicted band size: 23 kD

Observed band size: 23 kD



Sample:

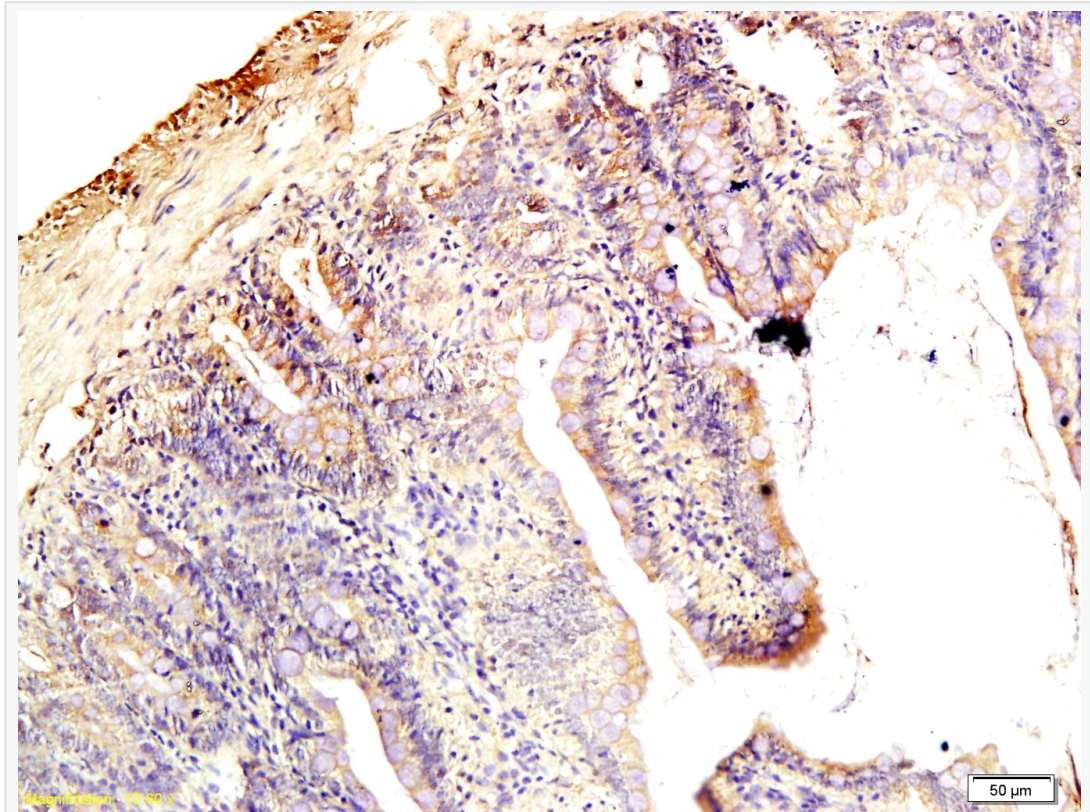
HepG2(Human) Cell Lysate at 30 ug

Primary: Anti-Claudin 1 (SL1428R) at 1/1000 dilution

Secondary: IRDye800CW Goat Anti-Rabbit IgG at 1/20000 dilution

Predicted band size: 23 kD

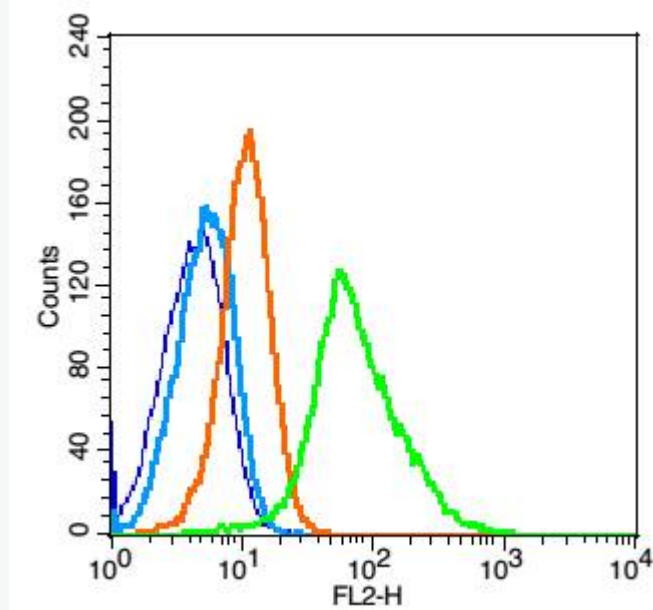
Observed band size: 23 kD



Tissue/cell: rat intestine tissue; 4% Paraformaldehyde-fixed and paraffin-embedded;

Antigen retrieval: citrate buffer (1M, pH 6.0), Boiling bathing for 15min; Block endogenous peroxidase by 3% Hydrogen peroxide for 30min; Blocking buffer (normal goat serum,C-0005) at 37°C for 20 min;

Incubation: Anti-Claudin-1 Polyclonal Antibody, Unconjugated(SL1428R) 1:200, overnight at 4°C, followed by conjugation to the secondary antibody(SP-0023) and DAB(C-0010) staining



Blank control: Raji(blue).

Primary Antibody:Rabbit Anti-Claudin 1 antibody(SL1428R), Dilution: 1 μ g in 100 μ L 1X PBS containing 0.5% BSA;

Isotype Control Antibody: Rabbit IgG(orange),used under the same conditions);

Secondary Antibody: Goat anti-rabbit IgG-PE(white blue), Dilution: 1:200 in 1 X PBS containing 0.5% BSA.

Protocol

The cells were fixed with 2% paraformaldehyde (10 min). Antibody (SL1428R, 1 μ g /1x10⁶ cells) were incubated for 30 min on the ice, followed by 1 X PBS containing 0.5% BSA + 1 0% goat serum (15 min) to block non-specific protein-protein interactions. Then the Goat Anti-rabbit IgG/PE antibody was added into the blocking buffer mentioned above to react with the primary antibody



SunLong Biotech Co.,LTD
Tel: 0086-571-56623320 Fax:0086-571-56623318
E-mail:sales@sunlongbiotech.com
www.sunlongbiotech.com

of SL1428R at 1/200 dilution for 30 min on ice. Acquisition of 20,000 events was performed.