

## Rabbit Anti-DENND3 antibody

SL14271R

<b>Product Name</b>	DENND3
<b>Chinese Name</b>	DENND3 蛋白抗体
<b>Alias</b>	DEND3_HUMAN; DENN domain-containing protein 3; DENN/MADD domain containing 3; Dennd3; KIAA0870.
<b>Research Area</b>	Cell biology Signal transduction G protein signal
<b>Immunogen Species</b>	Rabbit
<b>Clonality</b>	Polyclonal
<b>React Species</b>	Rat, (predicted: Human, Mouse, ) IHC-P=1:100-500,IHC-F=1:100-500,ICC/IF=1:100-500,IF=1:100-500 (Paraffin sections need antigen repair)
<b>Applications</b>	not yet tested in other applications. optimal dilutions/concentrations should be determined by the end user.
<b>Theoretical molecular weight</b>	136kDa
<b>Cellular localization</b>	cytoplasmic
<b>Form</b>	Liquid
<b>Concentration</b>	1mg/ml
<b>immunogen</b>	KLH conjugated synthetic peptide derived from human DENND3: 351-450/1198
<b>Lsotype</b>	IgG
<b>Purification</b>	affinity purified by Protein A
<b>Buffer Solution</b>	1M TBS(pH7.4) with 1% BSA, 3% Proclin300 and 50% Glycerol.
<b>Storage</b>	Shipped at 4°C. Store at -20 °C for one year. Avoid repeated freeze/thaw cycles.
<b>Attention</b>	This product as supplied is intended for research use only, not for use in human, therapeutic or diagnostic applications.
<b>PubMed</b>	<a href="#">PubMed</a>
<b>Product</b>	DENND3 is a 1,198 amino acid protein that contains a single DENN, dDENN and

---

## Detail

uDENN domain, as well as three WD repeats. Existing as four alternatively spliced isoforms, the DENND3 gene is conserved in chimpanzee, dog, cow, mouse, rat, chicken and zebrafish, and maps to human chromosome 8q24.3. Made up of nearly 146 million bases, chromosome 8 encodes about 800 genes. Translocation of portions of chromosome 8 with amplifications of the c-Myc gene are found in some leukemias and lymphomas, and typically associated with a poor prognosis. Portions of chromosome 8 have been linked to schizophrenia and bipolar disorder. WRN is a DNA helicase encoded by chromosome 8 and shown defective in those with the early aging disorder Werner syndrome. Chromosome 8 is also associated with Pfeiffer syndrome, congenital hypothyroidism and Waardenburg syndrome.

### Function:

Guanine nucleotide exchange factor (GEF) activating RAB12. Promotes the exchange of GDP to GTP, converting inactive GDP-bound RAB12 into its active GTP-bound form. Thereby, may play a role in protein transport from recycling endosomes to lysosomes regulating, for instance, the degradation of the transferring receptor.

### Similarity:

Contains 1 dDENN domain.

Contains 1 DENN domain.

Contains 1 uDENN domain.

Contains 3 WD repeats.

### SWISS:

A2RUS2

### Gene ID:

22898

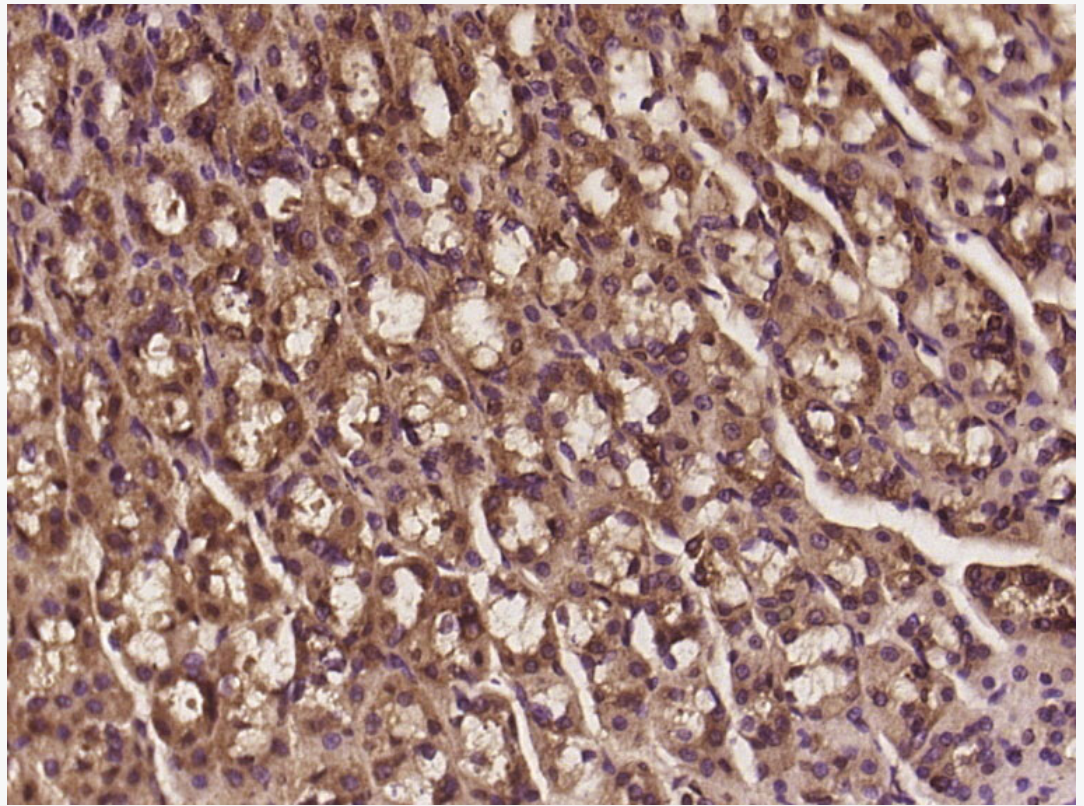
### Database links:

[Entrez Gene: 22898](#) Human

[SwissProt: A2RUS2](#) Human

[Unigene: 18166](#) Human

**Product  
Picture**



Paraformaldehyde-fixed, paraffin embedded (rat stomach tissue); Antigen retrieval by boiling in sodium citrate buffer (pH6.0) for 15min; Block endogenous peroxidase by 3% hydrogen peroxide for 20 minutes; Blocking buffer (normal goat serum) at 37°C for 30min; Antibody incubation with (DENND3) Polyclonal Antibody, Unconjugated (SL14271R) at 1:400 overnight at 4°C, followed by operating according to SP Kit(Rabbit) (sp-0023) instructions and DAB staining.