

## Rabbit Anti-DENND1A antibody

SL14269R

**Product Name** DENND1A

**Chinese Name** DENND1A 蛋白抗体

**Alias** Connecdenn 1; Connecdenn; DEN1A\_HUMAN; DENN domain-containing protein 1A; DENN/MADD domain containing 1A; dennd1a; FAM31A; FLJ21129; FLJ38464; KIAA1608; OTTHUMP00000022090; Protein FAM31A; RP11 230L22.3.

**Research Area** Cell biology Neurobiology Signal transduction G protein signal

**Immunogen Species** Rabbit

**Clonality** Polyclonal

**React Species** Rat(predicted:Human,Mouse,Chicken,Dog,Pig,Cow,Horse,Rabbit,Sheep)  
IHC-P=1:100-500,IHC-F=1:100-500,IF=1:100-500 (Paraffin sections need antigen repair)

**Applications** not yet tested in other applications.  
optimal dilutions/concentrations should be determined by the end user.

**Theoretical molecular weight** 110kDa

**Cellular localization** cytoplasmic The cell membrane

**Form** Liquid

**Concentration** 1mg/ml

**immunogen** KLH conjugated synthetic peptide derived from human DENND1A: 42-140/1009

**Lsotype** IgG

**Purification** affinity purified by Protein A

**Buffer Solution** 1M TBS(pH7.4) with 1% BSA, 3% Proclin300 and 50% Glycerol.

**Storage** Shipped at 4°C. Store at -20 °C for one year. Avoid repeated freeze/thaw cycles.

**Attention** This product as supplied is intended for research use only, not for use in human, therapeutic or diagnostic applications.

**PubMed** [PubMed](#)

---

Clathrin (see MIM 118955)-mediated endocytosis is a major mechanism for internalization of proteins and lipids. Members of the connectenn family, such as DENND1A, function as guanine nucleotide exchange factors (GEFs) for the early endosomal small GTPase RAB35 (MIM 604199) and bind to clathrin and clathrin adaptor protein-2 (AP2; see MIM 601024). Thus, connectenns link RAB35 activation with the clathrin machinery (Marat and McPherson, 2010 [PubMed 20154091]).[supplied by OMIM, Nov 2010]

**Function:**

Guanine nucleotide exchange factor (GEF) for RAB35. May be involved in the clathrin-mediated endocytosis of synaptic vesicles.

**Subcellular Location:**

Cell junction > synapse > presynaptic cell membrane. Cytoplasmic vesicle > clathrin-coated vesicle membrane. Also associated with uncoated vesicles.

**Similarity:**

Contains 1 dDENN domain.

Contains 1 DENN domain.

Contains 1 uDENN domain.

**Product  
Detail**

**SWISS:**

Q8TEH3

**Gene ID:**

57706

**Database links:**

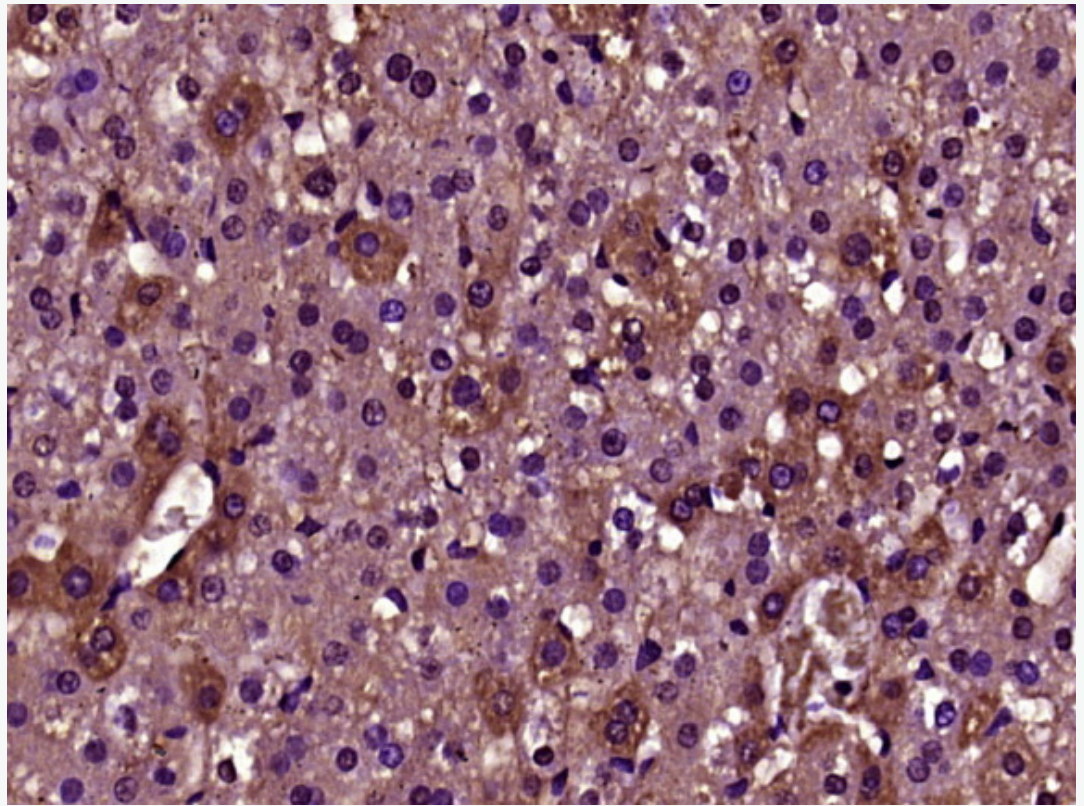
[Entrez Gene: 57706](#) Human

[Omim: 613633](#) Human

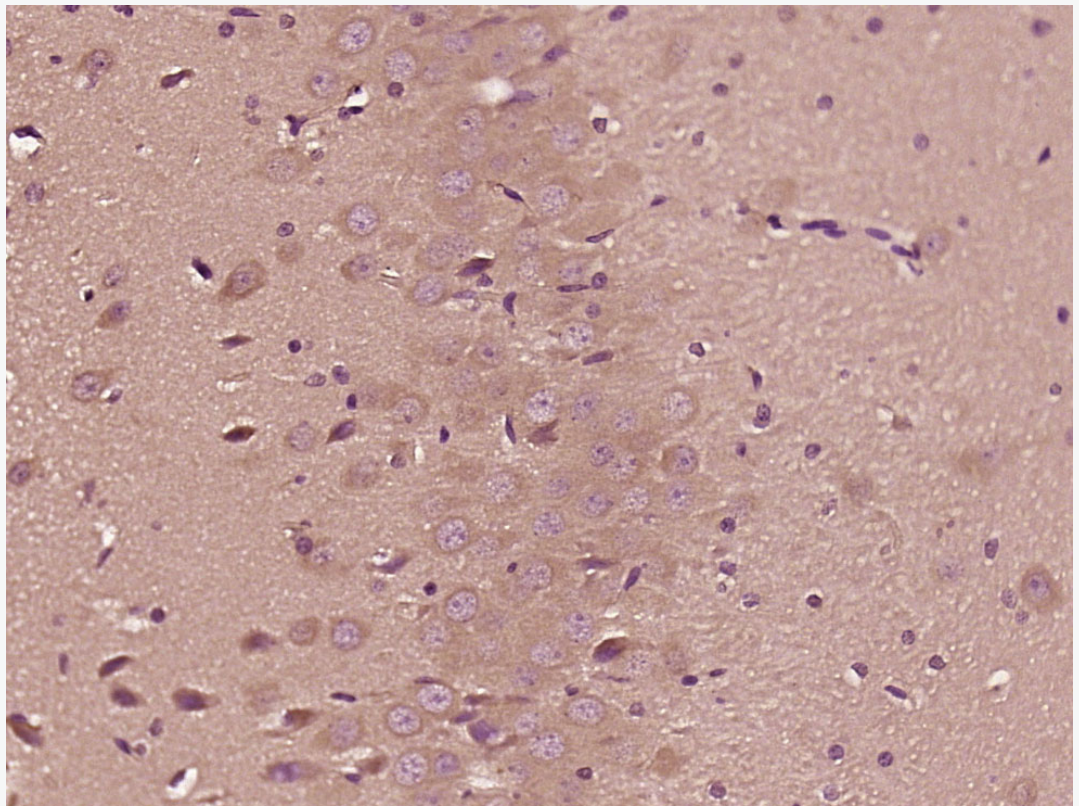
[SwissProt: Q8TEH3](#) Human

[Unigene: 568340](#) Human

**Product  
Picture**



Paraformaldehyde-fixed, paraffin embedded (Rat liver); Antigen retrieval by boiling in sodium citrate buffer (pH6.0) for 15min; Block endogenous peroxidase by 3% hydrogen peroxide for 20 minutes; Blocking buffer (normal goat serum) at 37°C for 30min; Antibody incubation with (DENND1A) Polyclonal Antibody, Unconjugated (SL14269R) at 1:400 overnight at 4°C, followed by operating according to SP Kit(Rabbit) (sp-0023) instructions and DAB staining.



Paraformaldehyde-fixed, paraffin embedded (Rat brain); Antigen retrieval by boiling in sodium citrate buffer (pH6.0) for 15min; Block endogenous peroxidase by 3% hydrogen peroxide for 20 minutes; Blocking buffer (normal goat serum) at 37°C for 30min; Antibody incubation with (DENND1A) Polyclonal Antibody, Unconjugated (SL14269R) at 1:500 overnight at 4°C, followed by a conjugated secondary (sp-0023) for 20 minutes and DAB staining.