

## Rabbit Anti-Deltex antibody

SL14265R

**Product Name** Deltex

**Chinese Name** E3Ubiquitin 蛋白连接酶抗体 DTX1 抗体

**Alias** Deltex homolog 1 (Drosophila); Deltex protein 1; Deltex-1; Deltex1; Dtx1; E3 ubiquitin protein ligase DTX1; FXI-T1; Fxit 1; Fxit1; DTX1\_HUMAN; hDTX1; hDx1; mDTX1; Protein deltex 1.

**Research Area** Cell biology Neurobiology Transporter Epigenetics Ubiquitin

**Immunogen Species** Rabbit

**Clonality** Polyclonal

**React Species** Mouse, (predicted: Human, Rat, Pig, Cow, Sheep, )

**Applications** WB=1:500-2000,IHC-P=1:100-500,IHC-F=1:100-500,IF=1:100-500 (Paraffin sections need antigen repair)  
not yet tested in other applications.  
optimal dilutions/concentrations should be determined by the end user.

**Theoretical molecular weight** 67kDa

**Cellular localization** The nucleus cytoplasmic

**Form** Liquid

**Concentration** 1mg/ml

**immunogen** KLH conjugated synthetic peptide derived from human Deltex: 351-450/620

**Lsotype** IgG

**Purification** affinity purified by Protein A

**Buffer Solution** 1M TBS(pH7.4) with 1% BSA, 3% Proclin300 and 50% Glycerol.

**Storage** Shipped at 4°C. Store at -20 °C for one year. Avoid repeated freeze/thaw cycles.

**Attention** This product as supplied is intended for research use only, not for use in human, therapeutic or diagnostic applications.

**PubMed** [PubMed](#)

---

Studies in *Drosophila* have identified this gene as encoding a positive regulator of the Notch-signaling pathway. The human gene encodes a protein of unknown function; however, it may play a role in basic helix-loop-helix transcription factor activity. [provided by RefSeq, Jul 2008]

**Function:**

Deltex is a RING finger ubiquitin ligase which is conserved from *Drosophila* to Humans and is a regulator of Notch signaling pathway. Deltex regulates both B-cell lineage and splenic marginal-zone B-cell commitment. Deltex is implicated in neurogenesis, lymphogenesis and myogenesis as well as marginal zone B cell differentiation.

**Subunit:**

Homodimer. May form a heterodimer with other members of the Deltex family. Interacts with NOTCH1 via its N-terminus region and EIF3F, the interaction is required for NOTCH1 deubiquitination. Interacts with EP300. Forms a heterodimer with BBAP; the heterodimerization leading to an increase of in vitro ubiquitin ligase activity. Interacts with ITCH.

**Subcellular Location:**

Cytoplasm and Nucleus. Note: Predominantly cytoplasmic, partially nuclear.

**Tissue Specificity:**

Widely expressed. Strongly expressed in blood vessel. Also expressed in embryonic nervous system, pancreas, lung, adrenal gland, digestive tube and muscles. Expressed in MZB cells and developing B- and T-cells.

**Post-translational modifications:**

Ubiquitinated; undergoes 'Lys-29'-linked polyubiquitination catalyzed by ITCH.

**Similarity:**

Belongs to the Deltex family.  
Contains 1 RING-type zinc finger.  
Contains 2 WWE domains.

**SWISS:**

Q86Y01

**Gene ID:**

1840

**Database links:**

**Product  
Detail**

[Entrez Gene: 1840](#) Human

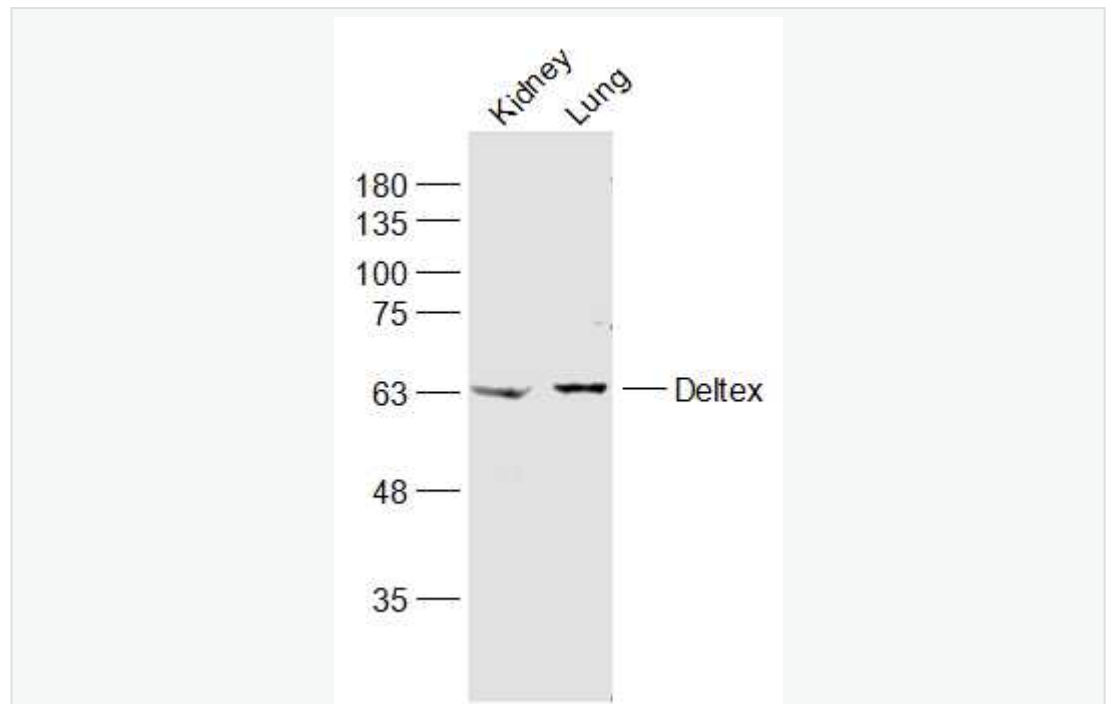
[Entrez Gene: 14357](#) Mouse

[Omim: 602582](#) Human

[SwissProt: Q86Y01](#) Human

[SwissProt: Q61010](#) Mouse

**Product  
Picture**



Sample:

Kidney (Mouse) Lysate at 40 ug

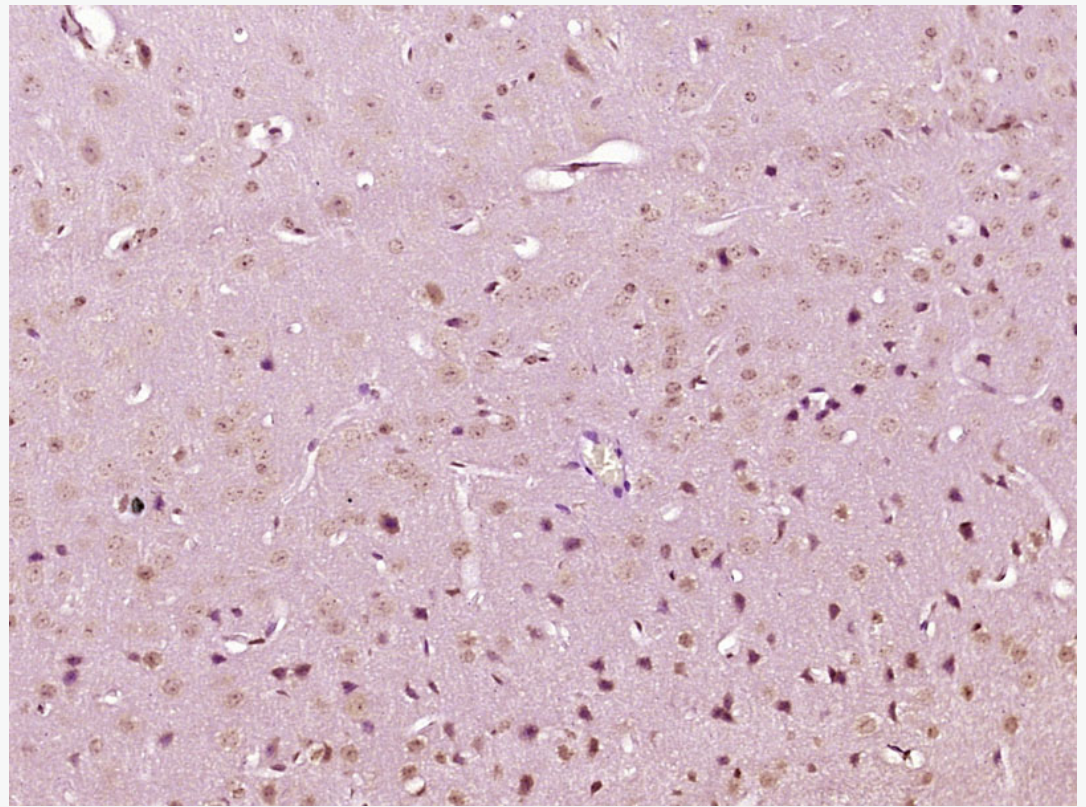
Lung (Mouse) Lysate at 40 ug

Primary: Anti-Deltex (SL14265R) at 1/1000 dilution

Secondary: IRDye800CW Goat Anti-Rabbit IgG at 1/20000 dilution

Predicted band size: 67 kD

Observed band size: 67 kD



Paraformaldehyde-fixed, paraffin embedded (Mouse brain); Antigen retrieval by boiling in sodium citrate buffer (pH6.0) for 15min; Block endogenous peroxidase by 3% hydrogen peroxide for 20 minutes; Blocking buffer (normal goat serum) at 37°C for 30min; Antibody incubation with (Deltex) Polyclonal Antibody, Unconjugated (SL14265R) at 1:400 overnight at 4°C, followed by operating according to SP Kit(Rabbit) (sp-0023) instructions and DAB staining.