

Rabbit Anti-HP1 gamma antibody

SL1421R

Product Name HP1 gamma

Chinese Name 异染色质蛋白 1- γ /HP-1 γ 抗体

Alias CBX 3; CBX3; Chromobox homolog 3; Chromobox protein homolog 3; HECH; Heterochromatin like protein 1; Heterochromatin protein 1 homolog gamma; Heterochromatin protein HP1 gamma; HP1 gamma homolog; HP1Hs gamma ; Modifier 2; protein HP1-GAMMA; HP1g; M32; MGC118084; CBX3_HUMAN; Modifier 2 protein; HP-1- γ ; HP 1 γ ; HP-1 γ ; HP-1 γ ; HP1 γ ; HP1 γ ;

Research Area Tumour Cell biology Chromatin and nuclear signals

Immunogen Species Rabbit

Clonality Polyclonal

React Species Rat(predicted:Human,Mouse,Chicken,Dog,Cow,Rabbit)

Applications IHC-P=1:100-500,IHC-F=1:100-500,IF=1:100-500 (Paraffin sections need antigen repair)
not yet tested in other applications.
optimal dilutions/concentrations should be determined by the end user.

Theoretical molecular weight 21kDa

Cellular localization The nucleus

Form Liquid

Concentration 1mg/ml

immunogen KLH conjugated synthetic peptide derived from human HP1 gamma: 10-150/183

Lsotype IgG

Purification affinity purified by Protein A

Buffer Solution 1M TBS(pH7.4) with 1% BSA, 3% Proclin300 and 50% Glycerol.

Storage Shipped at 4°C. Store at -20 °C for one year. Avoid repeated freeze/thaw cycles.

Attention This product as supplied is intended for research use only, not for use in human,

PubMed

therapeutic or diagnostic applications.

[PubMed](#)

HP1 gamma appears to be involved in transcriptional silencing in heterochromatin-like complexes. It recognizes and binds histone H3 tails methylated at 'Lys-9', leading to epigenetic repression. HP1 gamma may contribute to the association of the heterochromatin with the inner nuclear membrane through its interaction with lamin B receptor (LBR) and involved in the formation of functional kinetochore through interaction with MIS12 complex proteins.

Function:

Seems to be involved in transcriptional silencing in heterochromatin-like complexes. Recognizes and binds histone H3 tails methylated at 'Lys-9', leading to epigenetic repression. May contribute to the association of the heterochromatin with the inner nuclear membrane through its interaction with lamin B receptor (LBR). Involved in the formation of functional kinetochore through interaction with MIS12 complex proteins.

Subunit:

Binds directly to CHAF1A. Interacts with histone H3 methylated at 'Lys-9'. Part of the E2F6.com-1 complex in G0 phase composed of E2F6, MGA, MAX, TFDP1, CBX3, BAT8, EUHMTASE1, RING1, RNF2, MBLR, L3MBTL2 and YAF2. Interacts with LBR, INCENP, TRIM28/TIF1B, SUV420H1, SUV420H2 and SP100. Interacts with TIF1A. Interacts with MIS12 and DSN1. Can interact directly with CBX5 via the chromoshadow domain. Interacts with POGZ. Interacts with CHAMP1. Interacts with ASXL1.

**Product
Detail**

Subcellular Location:

Nucleus (Potential). Note=Associates with euchromatin and is largely excluded from constitutive heterochromatin. May be associated with microtubules and mitotic poles during mitosis (Potential).

Post-translational modifications:

Phosphorylated by PIM1. Phosphorylated during interphase and possibly hyper-phosphorylated during mitosis.

Similarity:

Contains 2 chromo domains.

SWISS:

Q13185

Gene ID:

11335

Database links:

[Entrez Gene: 11335](#) Human

[Entrez Gene: 12417](#) Mouse

[Entrez Gene: 297093](#) Rat

[Omim: 604477](#) Human

[SwissProt: Q13185](#) Human

[SwissProt: P23198](#) Mouse

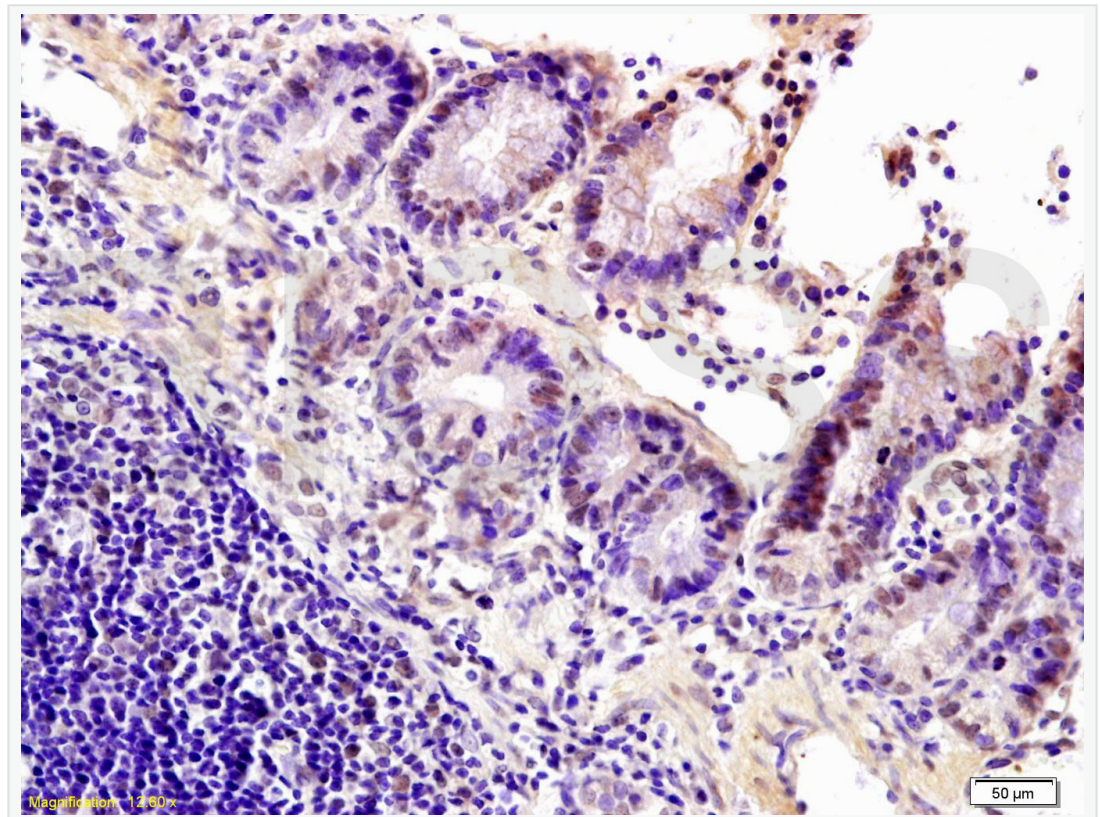
[Unigene: 381189](#) Human

[Unigene: 280968](#) Mouse

[Unigene: 458234](#) Mouse

[Unigene: 485141](#) Mouse

**Product
Picture**



Tissue/cell: rat intestine tissue; 4% Paraformaldehyde-fixed and paraffin-embedded;

Antigen retrieval: citrate buffer (1M, pH 6.0), Boiling bathing for 15min; Block endogenous peroxidase by 3% Hydrogen peroxide for 30min; Blocking buffer (normal goat serum,C-0005) at 37°C for 20 min;

Incubation: Anti-HP1 gamma Polyclonal Antibody, Unconjugated(SL1421R) 1:200, overnight at 4°C, followed by conjugation to the secondary antibody(SP-0023) and DAB(C-0010) staining