

Rabbit Anti-CK18 antibody

SL1339R

Product Name **[KO validated anti]** CK18

Chinese Name 细胞角蛋白 18 抗体 (C 端)

Alias K1C18_HUMAN; Keratin, type I cytoskeletal 18; KRT18; CYK18; Cell proliferation-inducing protein; Cytokeratin-18 (CK-18); Keratin-18 (K18); PIG46; Keratin 18;

Research Area Tumour immunology Signal transduction

Immunogen Species Rabbit

Clonality Polyclonal

React Species Human,Rat(predicted:Mouse,Chicken,Dog,Rabbit)

Applications WB=1:500-2000,IHC-P=1:100-500,IHC-F=1:100-500,ICC/IF=1:100-500,IF=1:100-500,Flow-Cytometry
/test (Paraffin sections need antigen repair)
not yet tested in other applications.
optimal dilutions/concentrations should be determined by the end user.

Theoretical molecular weight 48kDa

Cellular localization The nucleus cytoplasmic

Form Liquid

Concentration 1mg/ml

immunogen KLH conjugated synthetic peptide derived from human CK18: 301-423/430

Lsotype IgG

Purification affinity purified by Protein A

Buffer Solution Human,Rat(predicted:Mouse,Chicken,Dog,Rabbit)1M TBS(pH7.4) with 1% BSA,
Human,Rat(predicted:Mouse,Chicken,Dog,Rabbit)3% Proclin300 and 50% Glycerol.

Storage Shipped at 4°C. Store at -20 °C for one year. Avoid repeated freeze/thaw cycles.

Attention This product as supplied is intended for research use only, not for use in human, therapeutic or diagnostic applications.

PubMed [PubMed](#)

Product KRT18 encodes the type I intermediate filament chain keratin 18. Keratin 18, together with its filament partner

Detail

keratin 8, are perhaps the most commonly found members of the intermediate filament gene family. They expressed in single layer epithelial tissues of the body. Mutations in this gene have been linked to cryptogenic cirrhosis. Two transcript variants encoding the same protein have been found for this gene. [provided by RefSeq, Jul 2008]

Function:

When phosphorylated, plays a role in filament reorganization. Involved in the delivery of mutated proteins to the plasma membrane. Involved in the uptake of thrombin-antithrombin complexes by hepatic cells (see also KRT8 similarity). Together with KRT8, is involved in interleukin-6 (IL-6)-mediated barrier protection.

Post-translational modifications:

Phosphorylation increases by IL-6.

Proteolytically cleaved by caspases during epithelial cell apoptosis. Cleavage occurs at Asp-231 by caspase-3, caspase-6 or caspase-7.

O-glycosylated at multiple sites; glycans consist of single N-acetylglucosamine residue.

Similarity:

Belongs to the intermediate filament family.

SWISS:

P05783

Gene ID:

3875

Database links:

[Entrez Gene: 506480](#) Cow

[Entrez Gene: 3875](#) Human

[Entrez Gene: 16668](#) Mouse

[Entrez Gene: 294853](#) Rat

[SwissProt: P05783](#) Human

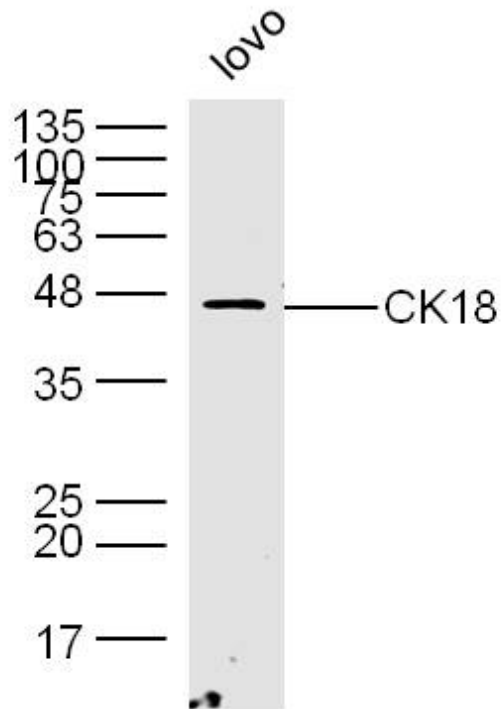
[SwissProt: P05784](#) Mouse

[SwissProt: Q5BJY9](#) Rat

结构蛋白 (Structural Proteins)

常用于 Tumour 细胞的分化、增殖及转移方面的研究。

**Product
Picture**



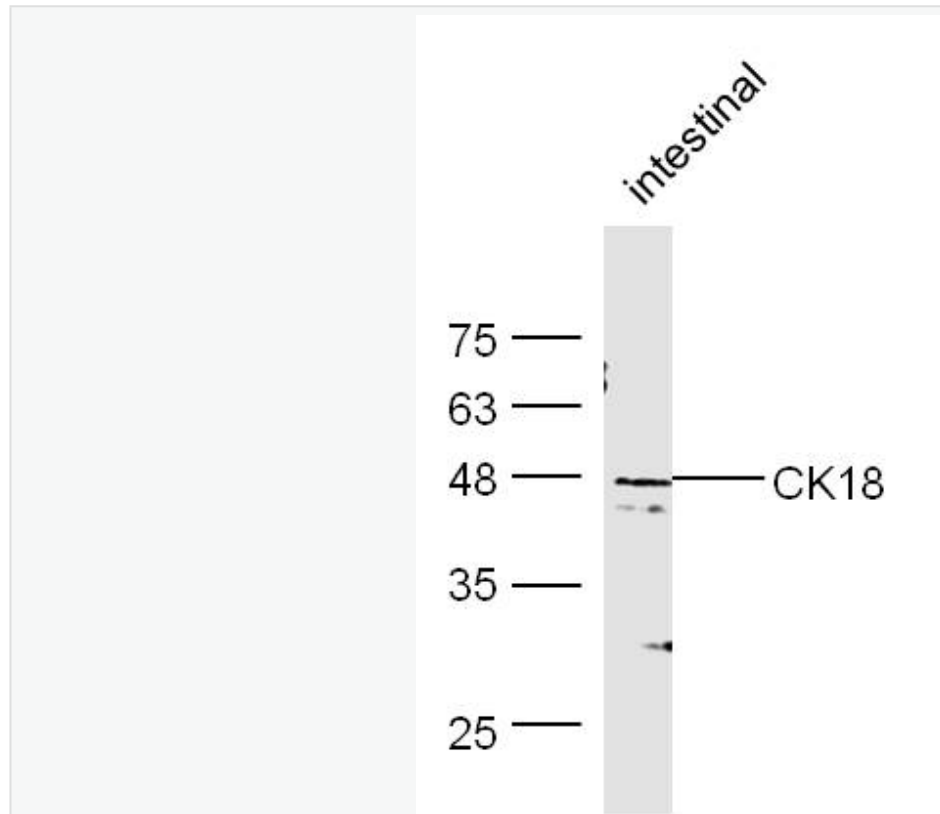
Sample: Lovo (mouse) Lysate at 40 ug

Primary: Anti- CK18(SL1339R)at 1/300 dilution

Secondary: IRDye800CW Goat Anti-Rabbit IgG at 1/20000 dilution

Predicted band size:48kD

Observed band size: 47kD



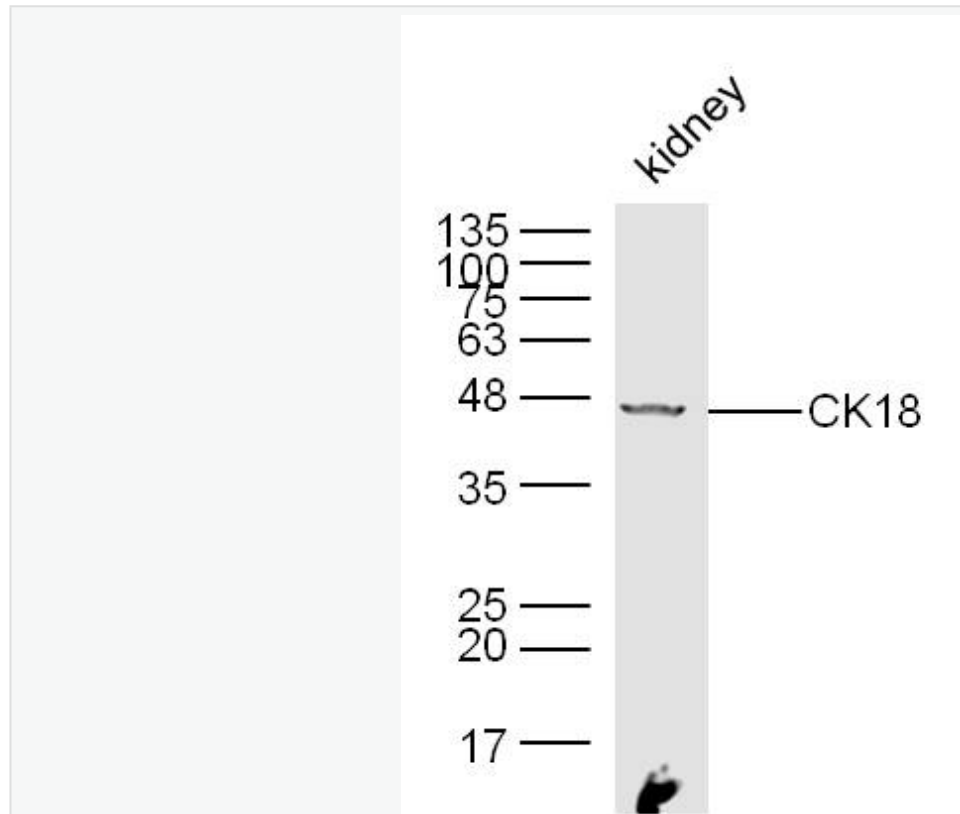
Sample: Intestinal (Mouse) Lysate at 30 ug

Primary: Anti- CK18 (SL1339R) at 1/300 dilution

Secondary: IRDye800CW Goat Anti-Mouse IgG at 1/10000 dilution

Predicted band size: 48 kD

Observed band size: 48 kD



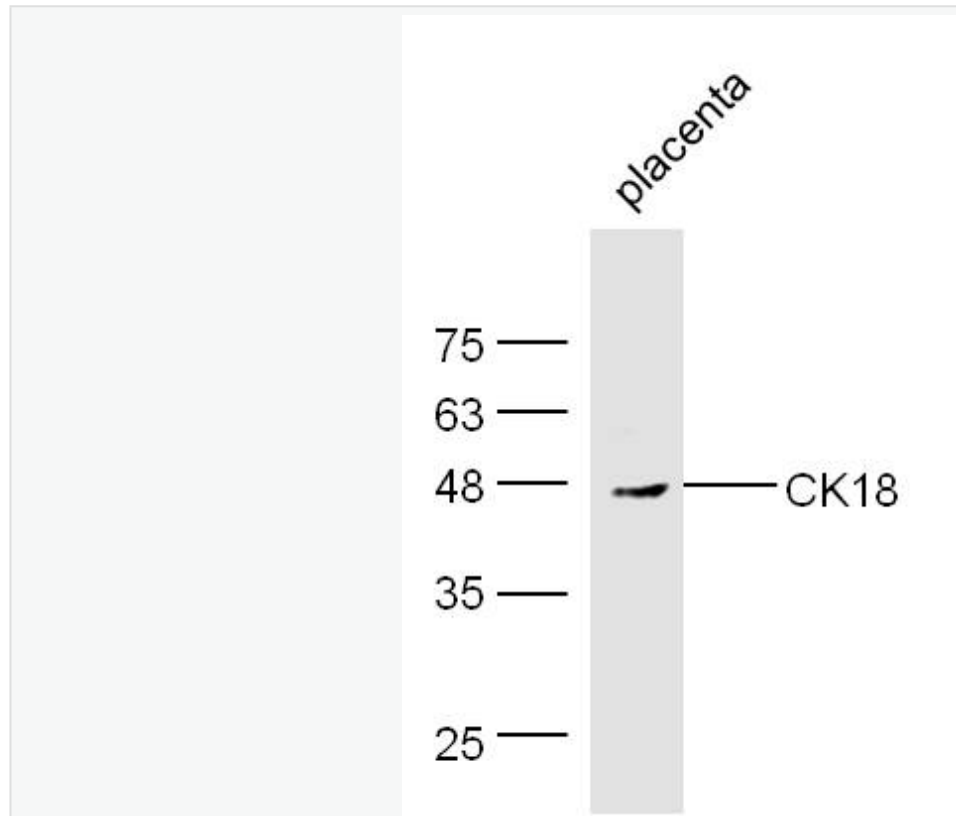
Sample: Kidney (mouse) Lysate at 40 ug

Primary: Anti- CK18(SL1339R)at 1/300 dilution

Secondary: IRDye800CW Goat Anti-Rabbit IgG at 1/20000 dilution

Predicted band size:48kD

Observed band size: 47kD



Sample:

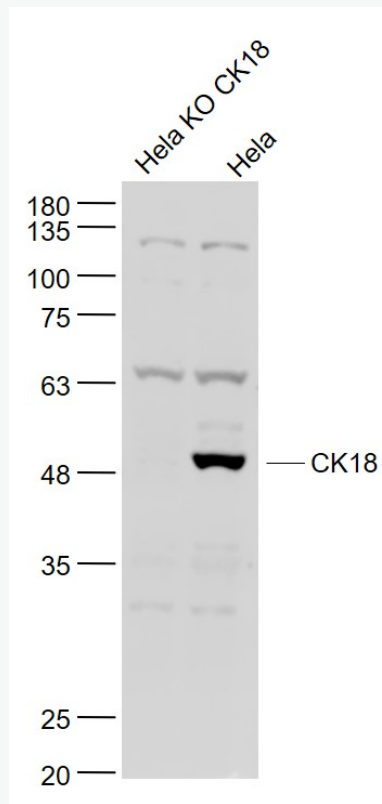
placenta (Mouse) Lysate at 40 ug

Primary: Anti-CK18 (Bs-1339R) at 1/300 dilution

Secondary: IRDye800CW Goat Anti-Rabbit IgG at 1/20000 dilution

Predicted band size: 48 kD

Observed band size: 48 kD



Sample:

HeLa KO CK18 (Human) Cell Lysate at 30 ug

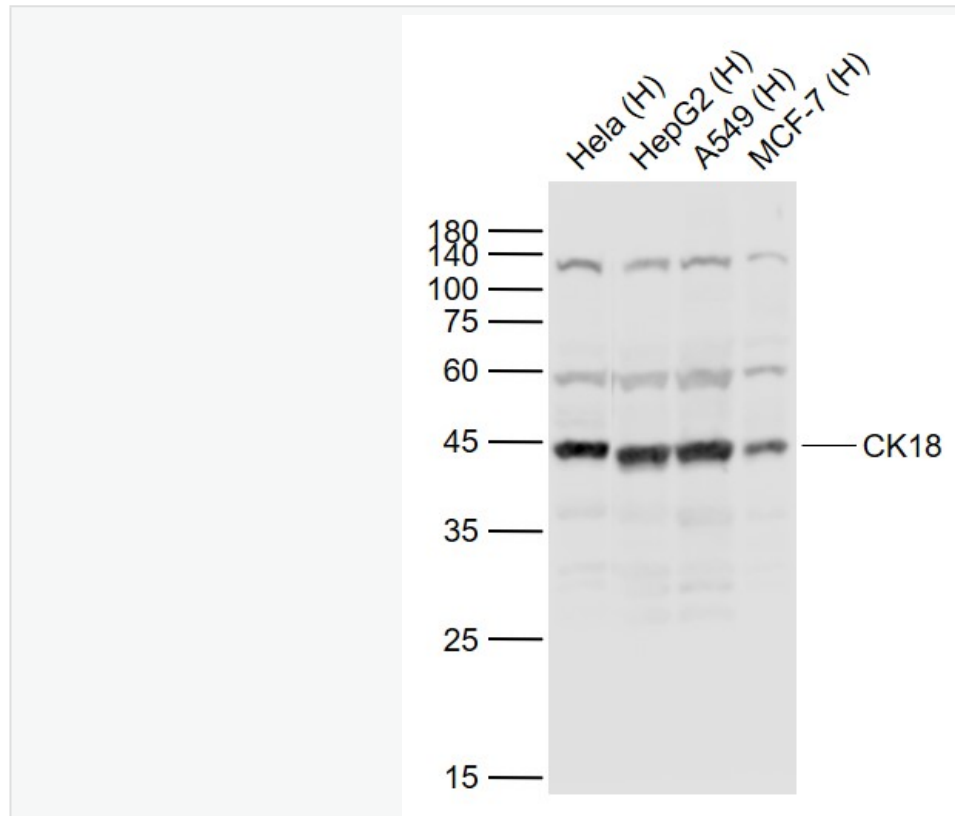
HeLa(Human) Cell Lysate at 30 ug

Primary: Anti-CK18 (SL1339R) at 1/1000 dilution

Secondary: IRDye800CW Goat Anti-Rabbit IgG at 1/20000 dilution

Predicted band size: 48 kD

Observed band size: 48 kD



Sample:

Lane 1: HeLa (Human) Cell Lysate at 30 ug

Lane 2: HepG2 (Human) Cell Lysate at 30 ug

Lane 3: A549 (Human) Cell Lysate at 30 ug

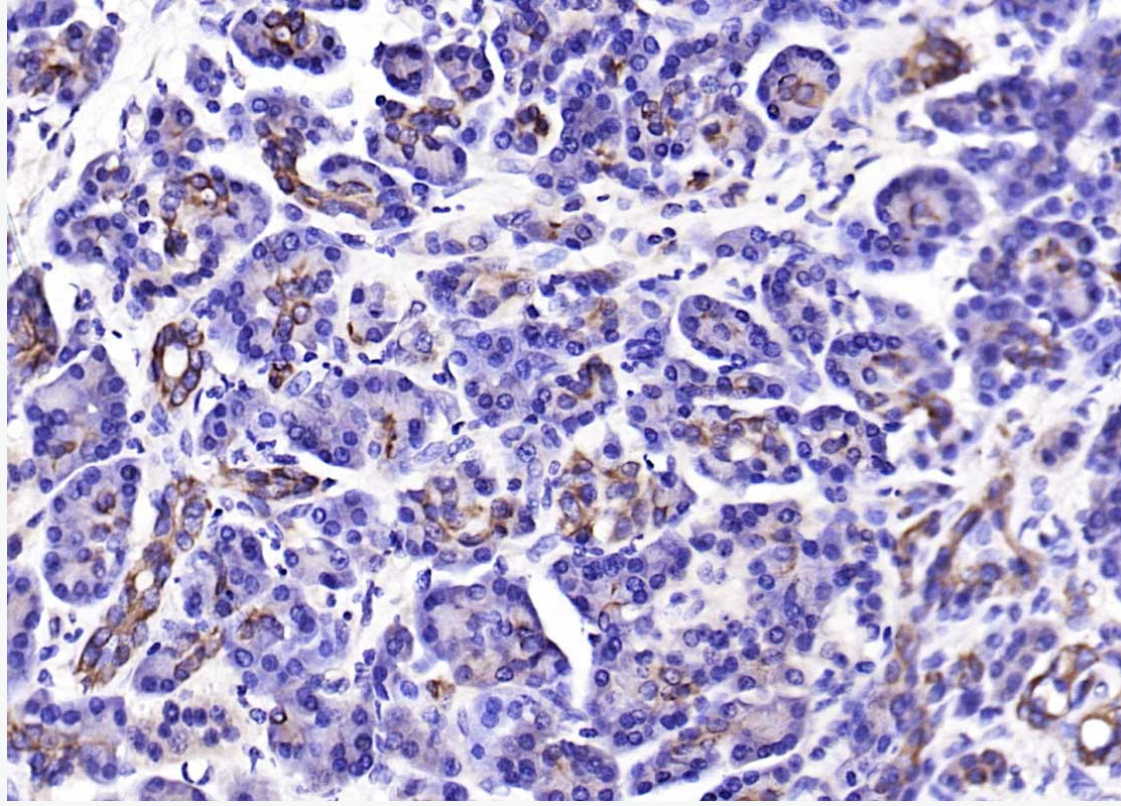
Lane 4: MCF-7 (Human) Cell Lysate at 30 ug

Primary: Anti-CK18 (SL1339R) at 1/1000 dilution

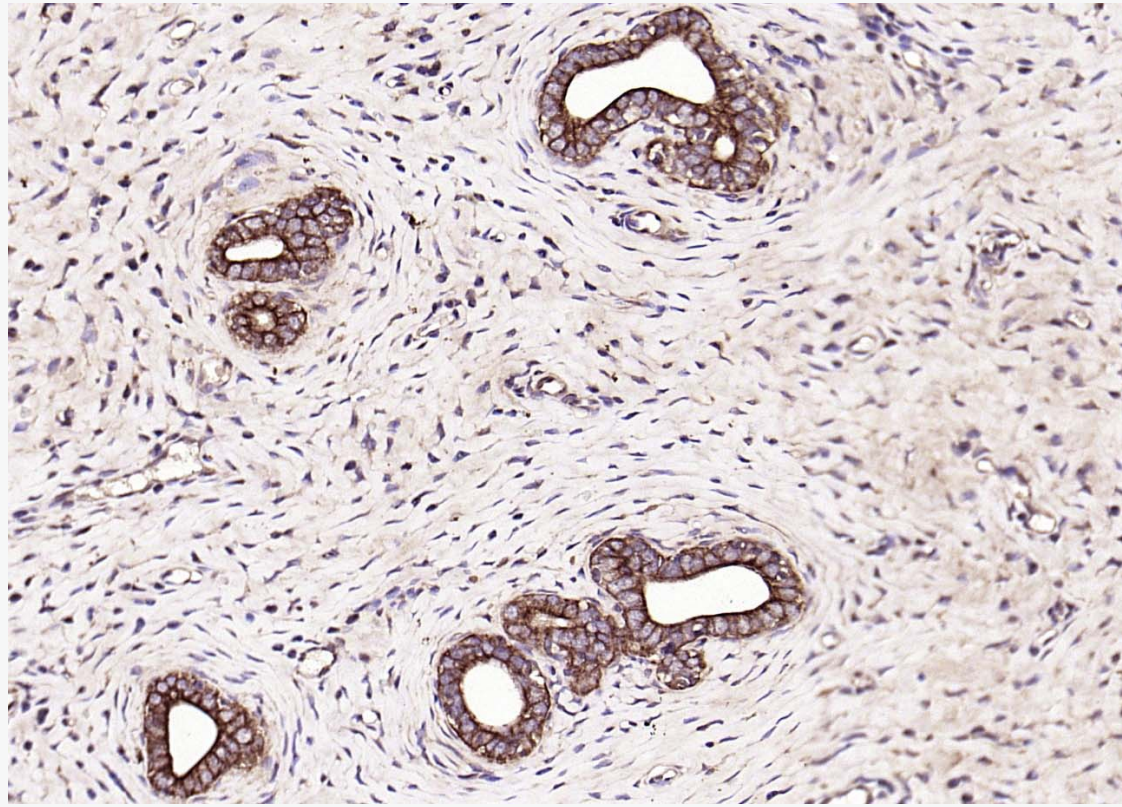
Secondary: IRDye800CW Goat Anti-Rabbit IgG at 1/20000 dilution

Predicted band size: 48 kD

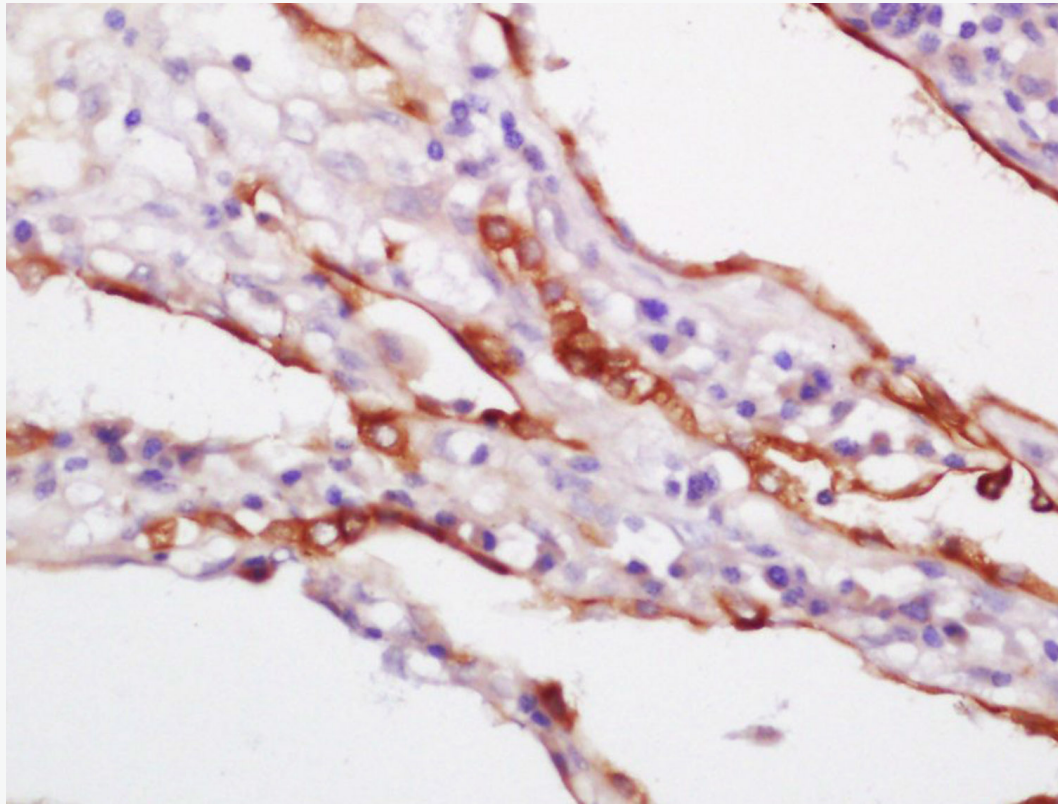
Observed band size: 45 kD



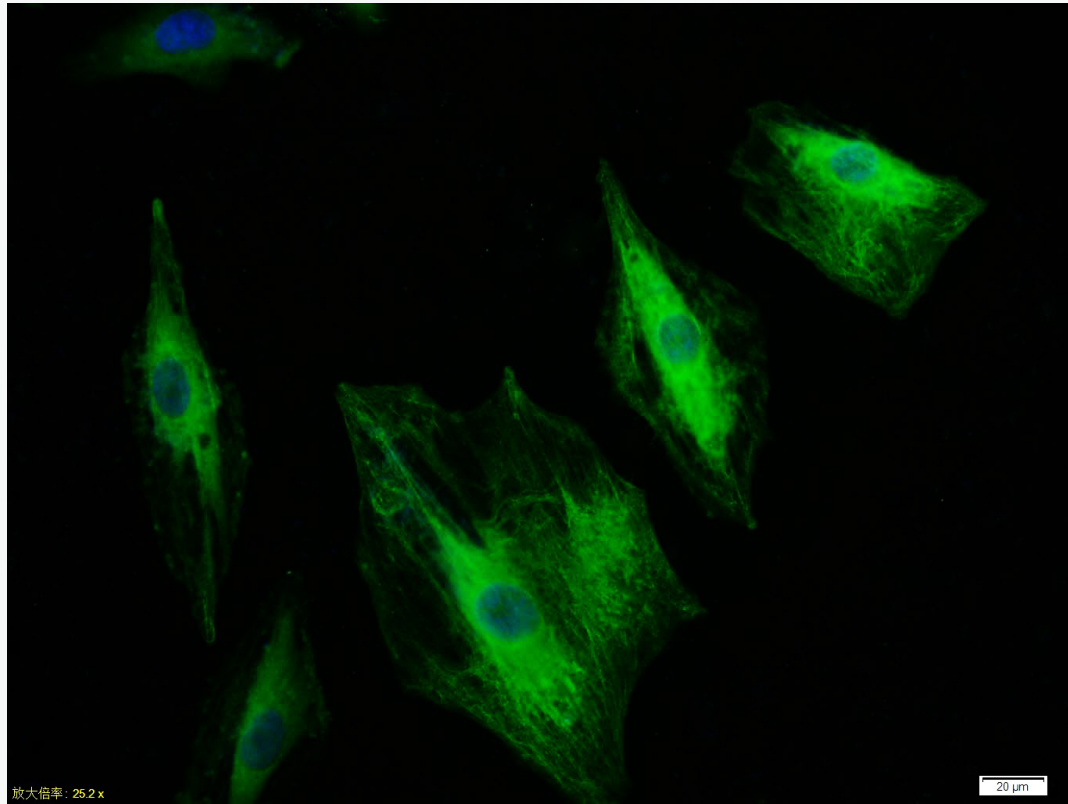
Paraformaldehyde-fixed, paraffin embedded (human pancreatic cancer); Antigen retrieval by boiling in sodium citrate buffer (pH6.0) for 15min; Block endogenous peroxidase by 3% hydrogen peroxide for 20 minutes; Blocking buffer (normal goat serum) at 37°C for 30min; Antibody incubation with Polyclonal Antibody, Unconjugated (SL1339R) at 1:200 overnight at 4°C, followed by operation according to SP Kit(Rabbit) (sp-0023) instructions and DAB staining.



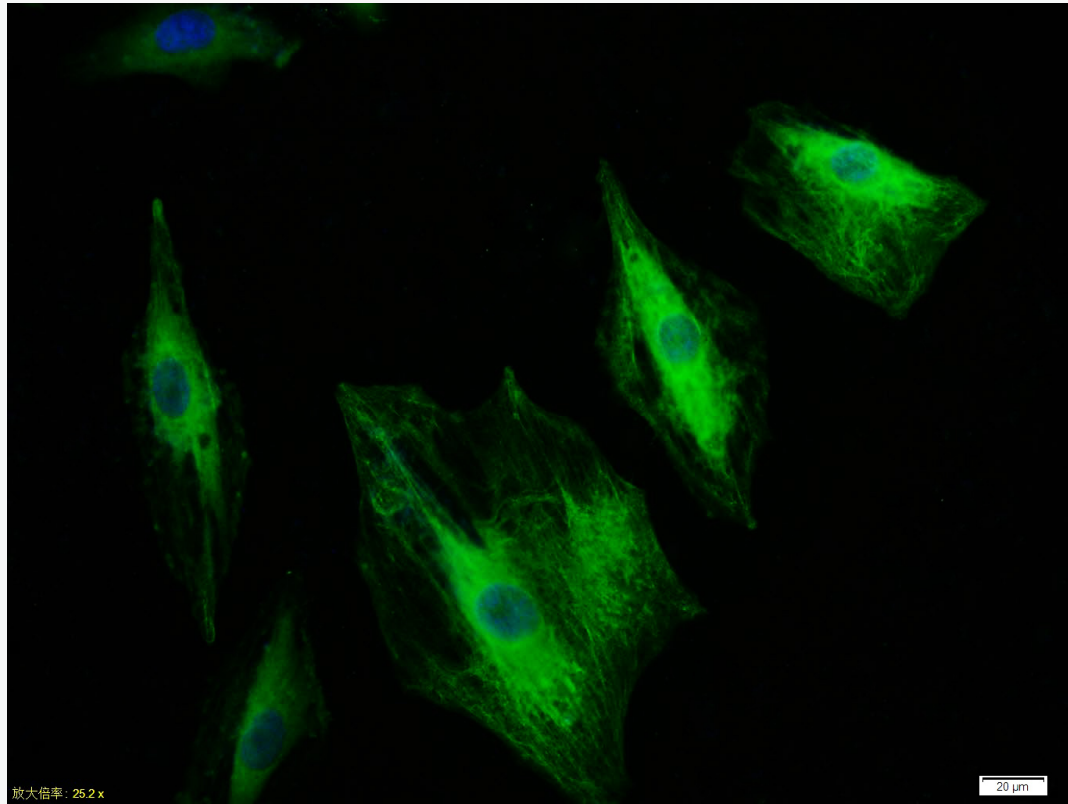
Paraformaldehyde-fixed, paraffin embedded (rat uterus); Antigen retrieval by boiling in sodium citrate buffer (pH6.0) for 15min; Block endogenous peroxidase by 3% hydrogen peroxide for 20 min; Blocking buffer (normal goat serum) at 37°C for 30min; Antibody incubation with (CK18) Polyclonal Antibody, Unconjugated (SL1339R) at 1:200 overnight at 4°C, followed by operating according to the IHC Kit(Rabbit) (sp-0023) instructions and DAB staining.



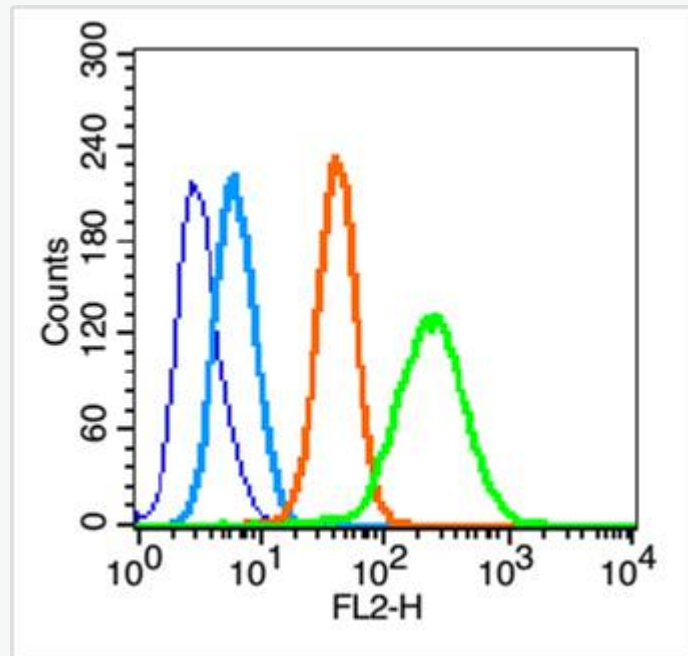
Tissue/cell: human lung carcinoma; 4% Paraformaldehyde-fixed and paraffin-embedded;
Antigen retrieval: citrate buffer (Human,Rat(predicted:Mouse,Chicken,Dog,Rabbit)1M, pH 6
Boiling bathing for 15min; Block endogenous peroxidase by 3% Hydrogen peroxide for 30mi
Blocking buffer (normal goat serum,C-0005) at 37°C for 20 min;
Incubation: Anti-CK18 Polyclonal Antibody, Unconjugated(SL1339R) 1:200, overnight at 4°C
followed by conjugation to the secondary antibody(SP-0023) and DAB(C-0010) staining



Tissue/cell:A549 cell; 4% Paraformaldehyde-fixed; Triton X-100 at room temperature for 20 min; Blocking buffer (normal goat serum,C-0005) at 37°C for 20 min; Antibody incubation with (C polyclonal Antibody, Unconjugated (SL1339R) 1:100, 90 minutes at 37°C; followed by a FITC conjugated Goat Anti-Rabbit IgG antibody at 37°C for 90 minutes, DAPI (blue, C02-04002) was used to stain the cell nuclei.



Tissue/cell:A549 cell; 4% Paraformaldehyde-fixed; Triton X-100 at room temperature for 20 min; Blocking buffer (normal goat serum,C-0005) at 37°C for 20 min; Antibody incubation with (C polyclonal Antibody, Unconjugated (SL1339R) 1:100, 90 minutes at 37°C; followed by a FITC conjugated Goat Anti-Rabbit IgG antibody at 37°C for 90 minutes, DAPI (blue, C02-04002) was used to stain the cell nuclei.



Blank control (blue line): Hep G2 (blue).

Primary Antibody (green line): Rabbit Anti-CK18 antibody (SL1339R)

Dilution: 0.2 μ g /10⁶ cells;

Isotype Control Antibody (orange line): Rabbit IgG .

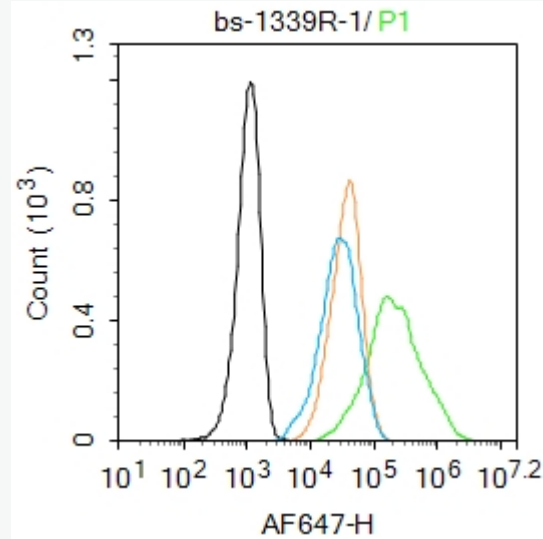
Secondary Antibody (white blue line): Goat anti-rabbit IgG-PE

Dilution: 1 μ g /test.

Protocol

The cells were fixed with 70% ethanol (Overnight at 4°C) and then permeabilized with 90% methanol for 20 min at -20°C. Cells stained with Primary Antibody for 30 min at room temperature. The cells were then incubated in 1 X PBS/2%BSA/10% goat serum to block non-specific protein-protein interactions followed by the antibody for 15 min at room temperature. The secondary antibody

40 min at room temperature. Acquisition of 20,000 events was performed.



Blank control:Hela.

Primary Antibody (green line): Rabbit Anti-CK18 antibody (SL1339R)

Dilution: 1 μ g /10⁶ cells;

Isotype Control Antibody (orange line): Rabbit IgG .

Secondary Antibody : Goat anti-rabbit IgG-AF647

Dilution: 1 μ g /test.

Protocol

The cells were fixed with 4% PFA (10min at room temperature)and then permeabilized with 0.1% Triton X-100 in PBS-T for 20 min at -20°C. The cells were then incubated in 5%BSA to block non-specific protein-protein interactions for 30 min at room temperature .Cells stained with Primary Antibody for 30 min at room temperature. The secondary antibody used for 40 min at room temperature. Acquisition of 20,000 events was performed.



SunLong Biotech Co.,LTD
Tel: 0086-571-56623320 Fax:0086-571-56623318
E-mail:sales@sunlongbiotech.com
www.sunlongbiotech.com

of 20,000 events was performed.