

Rabbit Anti-KCNG3 antibody

SL12175R

Product Name KCNG3

Chinese Name 电压门控性钾 Channel protein 亚基 KV6.3 抗体

Alias KCNG 3; Kcng3; KCNG3_HUMAN; KV10.1; Kv10.1a; Kv10.1b; KV6.3; OTTHUMP00000201478; OTTHUMP00000201479; Potassium voltage gated channel subfamily G member 3; Potassium voltage-gated channel subfamily G member 3; Voltage gated potassium channel 6.3; Voltage gated potassium channel Kv10.1; Voltage gated potassium channel subunit Kv10.1; Voltage gated potassium channel subunit Kv6.3; Voltage gated potassium channel subunit Kv6.4; Voltage-gated potassium channel subunit Kv10.1; Voltage-gated potassium channel subunit Kv6.3.

Research Area Cell biology Neurobiology Channel protein

Immunogen Species Rabbit

Clonality Polyclonal

React Species Human(predicted:Mouse,Rat,Dog,Pig,Cow,Horse,Rabbit,Sheep,GuineaPig)
WB=1:500-2000

Applications not yet tested in other applications.
optimal dilutions/concentrations should be determined by the end user.

Theoretical molecular weight 50kDa

Cellular localization cytoplasmic The cell membrane

Form Liquid

Concentration 1mg/ml

immunogen KLH conjugated synthetic peptide derived from human KCNG3: 251-350/436
<Extracellular>

Lsotype IgG

Purification affinity purified by Protein A

Buffer Solution Human(predicted:Mouse,Rat,Dog,Pig,Cow,Horse,Rabbit,Sheep,GuineaPig)1M TBS(pH7.4) with 1% BSA,
Human(predicted:Mouse,Rat,Dog,Pig,Cow,Horse,Rabbit,Sheep,GuineaPig)3%



Storage

Proclin300 and 50% Glycerol.

Shipped at 4°C. Store at -20 °C for one year. Avoid repeated freeze/thaw cycles.

Attention

This product as supplied is intended for research use only, not for use in human, therapeutic or diagnostic applications.

PubMed

[PubMed](#)

Voltage-gated potassium (Kv) channels represent the most complex class of voltage-gated ion channels from both functional and structural standpoints. Their diverse functions include regulating neurotransmitter release, heart rate, insulin secretion, neuronal excitability, epithelial electrolyte transport, smooth muscle contraction, and cell volume. This gene encodes a member of the potassium channel, voltage-gated, subfamily G. This member is a gamma subunit functioning as a modulatory molecule. Alternative splicing results in two transcript variants encoding distinct isoforms. [provided by RefSeq, Jul 2008].

Function:

Potassium channel subunit. Modulates channel activity.

Subunit:

Heteromultimer with KCNB1, KCNC1 and KCNF1. Does not form homomultimers.

Subcellular Location:

Cell membrane. Membrane. Has to be associated with KCNB1 or possibly another partner to get inserted in the plasma membrane. Remains intracellular in the absence of KCNB1.

**Product
Detail**

Tissue Specificity:

Detected in many parts of the brain with the exception of the cerebellum, in testis, pancreas, lung, kidney, ovary, small intestine, colon, thymus, adrenal gland and spinal cord.

Similarity:

Belongs to the potassium channel family.

G (TC 1.A.1.2) subfamily. Kv6.3/KCNG3 sub-subfamily.

SWISS:

Q8TAE7

Gene ID:

170850

Database links:

[Entrez Gene: 170850](#) Human

[Entrez Gene: 225030](#) Mouse

[Entrez Gene: 171011](#) Rat

[Omim: 606767](#) Human

[SwissProt: Q8TAE7](#) Human

[SwissProt: P59053](#) Mouse

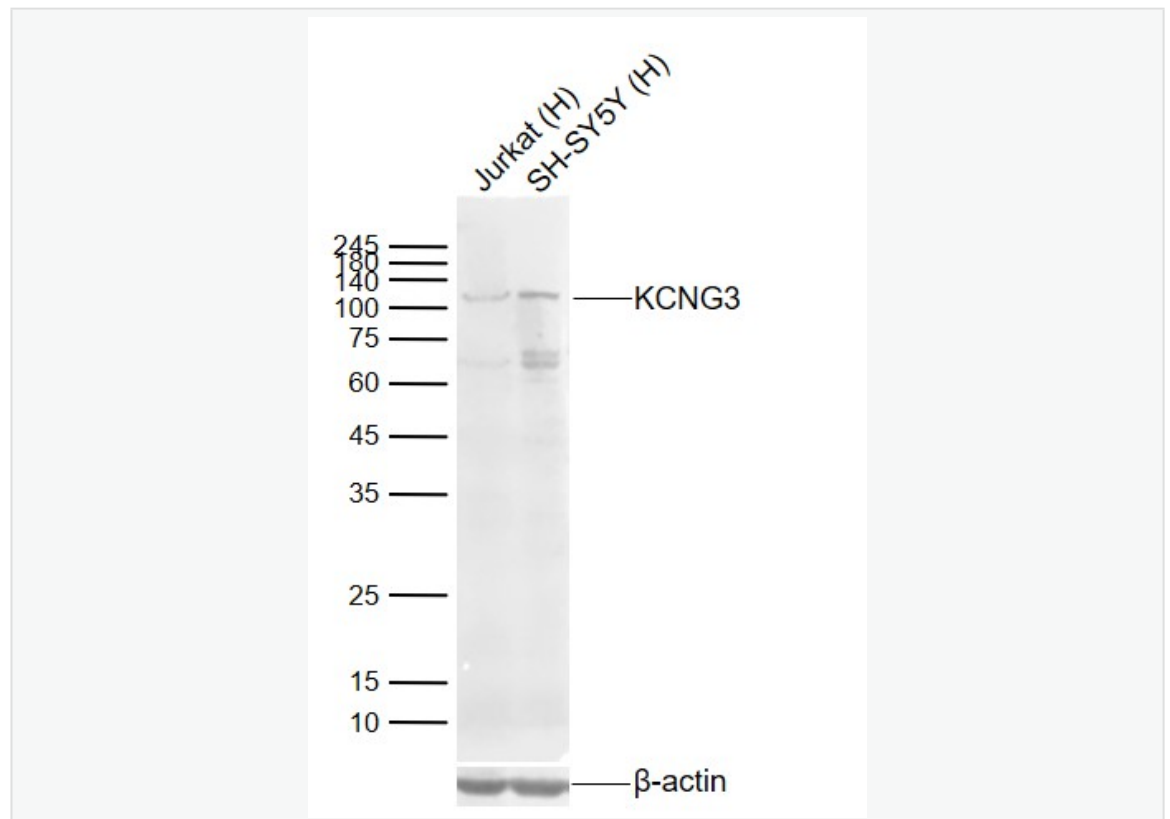
[SwissProt: Q8R523](#) Rat

[Unigene: 352633](#) Human

[Unigene: 223506](#) Mouse

[Unigene: 82689](#) Rat

**Product
Picture**



Sample:

Lane 1: Human Jurkat cell Lysates

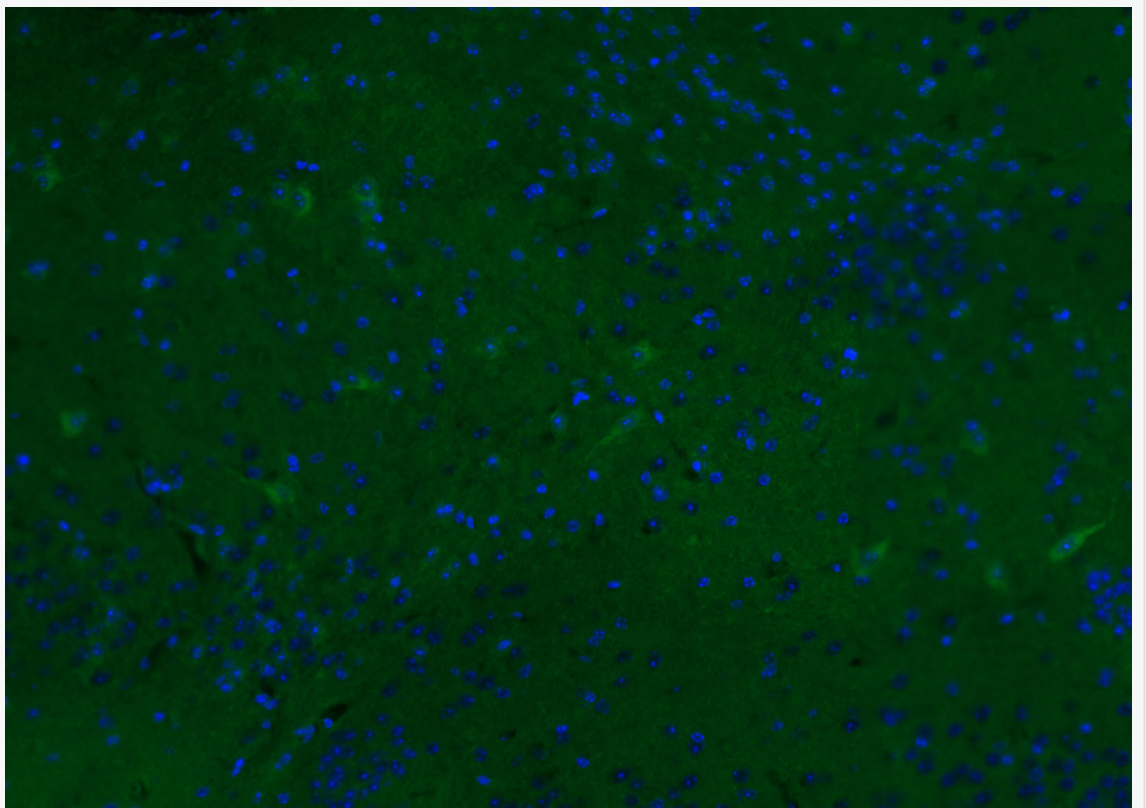
Lane 2: Human SH-SY5Y cell Lysates

Primary: Anti-KCNG3 (SL12175R) at 1/1000 dilution

Secondary: IRDye800CW Goat Anti-Rabbit IgG at 1/20000 dilution

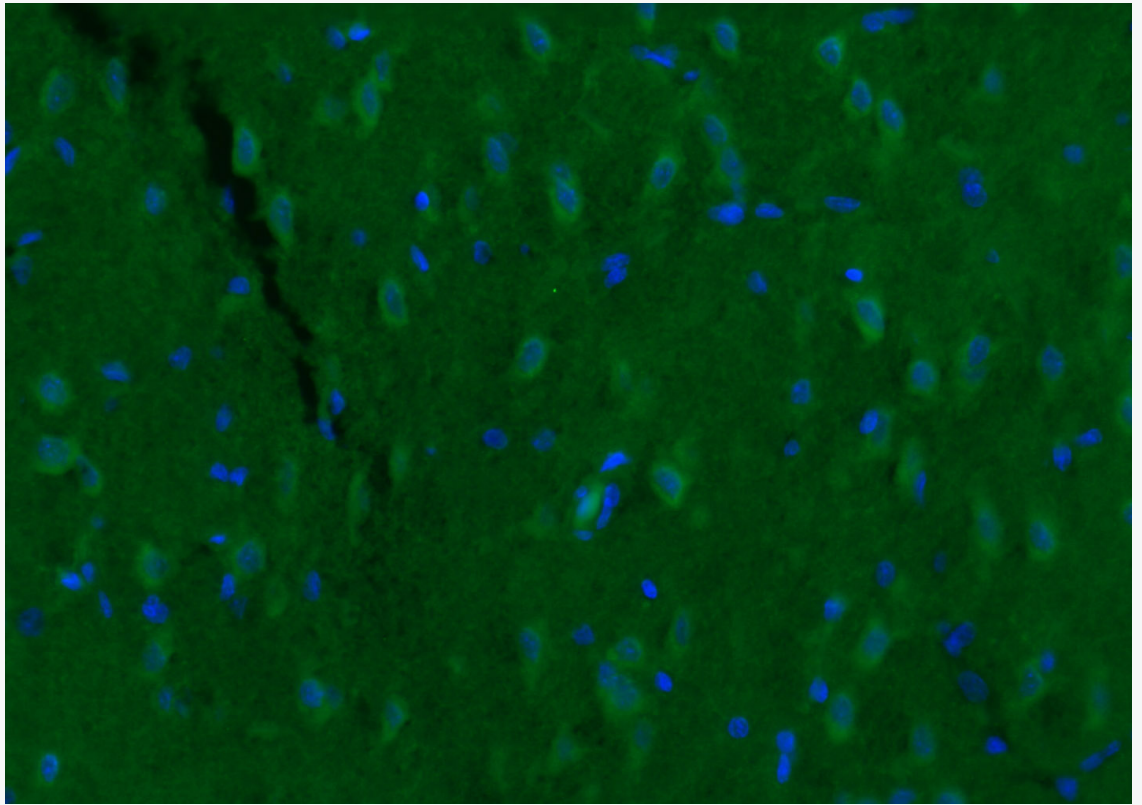
Predicted band size: 50kDa

Observed band size: 110kDa



Paraformaldehyde-fixed, paraffin embedded (mouse brain); Antigen retrieval by boiling in sodium citrate buffer (pH6.0) for 15min; Blocking buffer (normal goat serum) at 37°C for 30min; Antibody incubation with (KCNG3) Polyclonal Antibody, Unconjugated (SL12175R) at 1:200 overnight at 4°C, followed by a conjugated Goat Anti-Rabbit IgG antibody (SL0295G-AF488) for 90 minutes, and DAPI for nuclei

staining.



Paraformaldehyde-fixed, paraffin embedded (rat brain); Antigen retrieval by boiling in sodium citrate buffer (pH6.0) for 15min; Blocking buffer (normal goat serum) at 37°C for 30min; Antibody incubation with (KCNG3) Polyclonal Antibody, Unconjugated (SL12175R) at 1:200 overnight at 4°C, followed by a conjugated Goat Anti-Rabbit IgG antibody (SL0295G-AF488) for 90 minutes, and DAPI for nuclei staining.