

Rabbit Anti-KCNF1 antibody

SL12173R

Product Name KCNF1

Chinese Name 电压门控性钾 Channel protein 亚基 kv5.1 抗体

Alias IK 8; IK8; KCNF 1; KCNF; Kcnf1; KCNF1_HUMAN; kH 1; kH1; KV5.1; Potassium voltage-gated channel subfamily F member 1; MGC33316; Potassium channel KH1; Potassium channel Kv5.1; Potassium voltage gated channel subfamily F member 1; Potassium voltage-gated channel subfamily F member 1; Voltage gated potassium channel subunit Kv5.1; Voltage-gated potassium channel subunit Kv5.1.

Research Area Tumour Cell biology Neurobiology Signal transduction Channel protein The cell membrane 受体

Immunogen Species Rabbit

Clonality Polyclonal

React Species Mouse(predicted:Human,Rat,Chicken,Dog,Pig,Cow,Horse,Rabbit,Sheep,GuineaPig)
WB=1:500-2000

Applications not yet tested in other applications.
optimal dilutions/concentrations should be determined by the end user.

Theoretical molecular weight 56kDa

Cellular localization The cell membrane

Form Liquid

Concentration 1mg/ml

immunogen KLH conjugated synthetic peptide derived from human KCNF1: 161-260/494
<Extracellular>

Lsotype IgG

Purification affinity purified by Protein A

Buffer Solution 1M TBS(pH7.4) with 1% BSA, 3% Proclin300 and 50% Glycerol.

Storage Shipped at 4°C. Store at -20 °C for one year. Avoid repeated freeze/thaw cycles.

Attention This product as supplied is intended for research use only, not for use in human,

therapeutic or diagnostic applications.

PubMed

[PubMed](#)

KCNF1 is a multi-pass membrane-bound protein that acts as an ion channel and is generally expressed as a heterotetramer of potassium channeling proteins. Formerly known as kH1, KCNF1 is usually found as a heteromer with three other potassium channel proteins, KCNG3, KV6.3 and KCNV2. As a potassium channel protein, KCNF1 plays a role in regulating apoptosis and proliferation of pulmonary artery smooth muscle (PASM) cells. Bone morphogenetic proteins (BMPs) restrict proliferation and can induce apoptosis in normal human PASM cells and will upregulate expression of KCNF1 in PASM cells in vitro. KCNF1 is expressed in heart, brain, liver, skeletal muscle, kidney and pancreas.

Function:

Putative voltage-gated potassium channel.

Subunit:

Heteromultimer with KCNG3, KCNG4 and KCNV2. Interacts with DLG1.

Subcellular Location:

Membrane.

**Product
Detail**

Tissue Specificity:

Detected in heart, brain, liver, skeletal muscle, kidney and pancreas.

Similarity:

Belongs to the potassium channel family.
F (TC 1.A.1.2) subfamily. Kv5.1/KCNF1 sub-subfamily.

SWISS:

Q9H3M0

Gene ID:

3754

Database links:

[Entrez Gene: 3754](#) Human

[Entrez Gene: 382571](#) Mouse

[Omim: 603787](#) Human

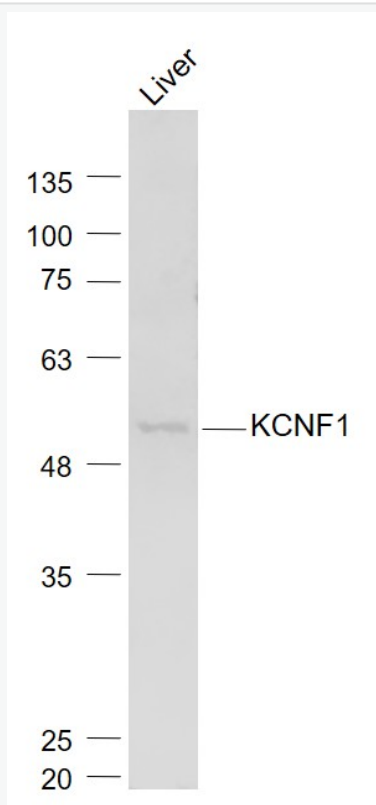
[SwissProt: Q9H3M0](#) Human

[SwissProt: Q7TSH7](#) Mouse

[Unigene: 23735](#) Human

[Unigene: 40173](#) Mouse

**Product
Picture**



Sample:

Liver (Mouse) Lysate at 40 ug

Primary: Anti- KCNF1 (SL12173R) at 1/1000 dilution

Secondary: IRDye800CW Goat Anti-Rabbit IgG at 1/20000 dilution

Predicted band size: 56 kD

Observed band size: 56 kD



SunLong Biotech Co.,LTD
Tel: 0086-571-56623320 Fax:0086-571-56623318
E-mail:sales@sunlongbiotech.com
www.sunlongbiotech.com
