

Rabbit Anti-Calcyphosine 1 antibody

SL12161R

Product Name	Calcyphosine 1
Chinese Name	钙磷蛋白 1 抗体
Alias	Calcyphosin; Calcyphosine 1; Calcyphosine; CAPS; CAPS1; CAYP1_HUMAN; Thyroid protein p24.
Research Area	Cell biology Neurobiology Signal transduction Binding protein
Immunogen Species	Rabbit
Clonality	Polyclonal
React Species	Human(predicted:Dog,Pig,Cow,Rabbit,Sheep) IHC-P=1:100-500,IHC-F=1:100-500,IF=1:100-500 (Paraffin sections need antigen repair)
Applications	not yet tested in other applications. optimal dilutions/concentrations should be determined by the end user.
Theoretical molecular weight	21kDa
Cellular localization	cytoplasmic
Form	Liquid
Concentration	1mg/ml
immunogen	KLH conjugated synthetic peptide derived from human Calcyphosine 1: 101-189/189
Lsotype	IgG
Purification	affinity purified by Protein A
Buffer Solution	1M TBS(pH7.4) with 1% BSA, 3% Proclin300 and 50% Glycerol.
Storage	Shipped at 4°C. Store at -20 °C for one year. Avoid repeated freeze/thaw cycles.
Attention	This product as supplied is intended for research use only, not for use in human, therapeutic or diagnostic applications.
PubMed	PubMed
Product	CAPS1 is a 189 amino acid cytoplasmic protein that contains four EF-hand domains,

Detail

which serve as calcium-binding sites, and was first identified in canine thyroid. Interestingly, CAPS1 is much less abundant in humans than in canines. Synthesis and phosphorylation of CAPS1 is upregulated by cAMP-agonists in thyrocytes. CAPS1 likely functions in the regulation of ionic transport and may be involved in cross-signaling between cAMP and Ca(+2)-phophatidylinositol cascades. In addition to thyriod, CAPS1 is expressed in brain, salivary glands and lung. Expression of CAPS1 is increased in endometrial cancer and prognosis seems to be dependent on the level of CAPS1 expression, indicating that CAPS1 may be an appropriate prognostic marker for patient survival.

Function:

Calcium-binding protein. May play a role in cellular signaling events.

Subunit:

Monomer. Does not form oligomers in the presence of calcium.

Subcellular Location:

Cytoplasm.

Similarity:

Contains 4 EF-hand domains.

SWISS:

Q13938

Gene ID:

828

Database links:

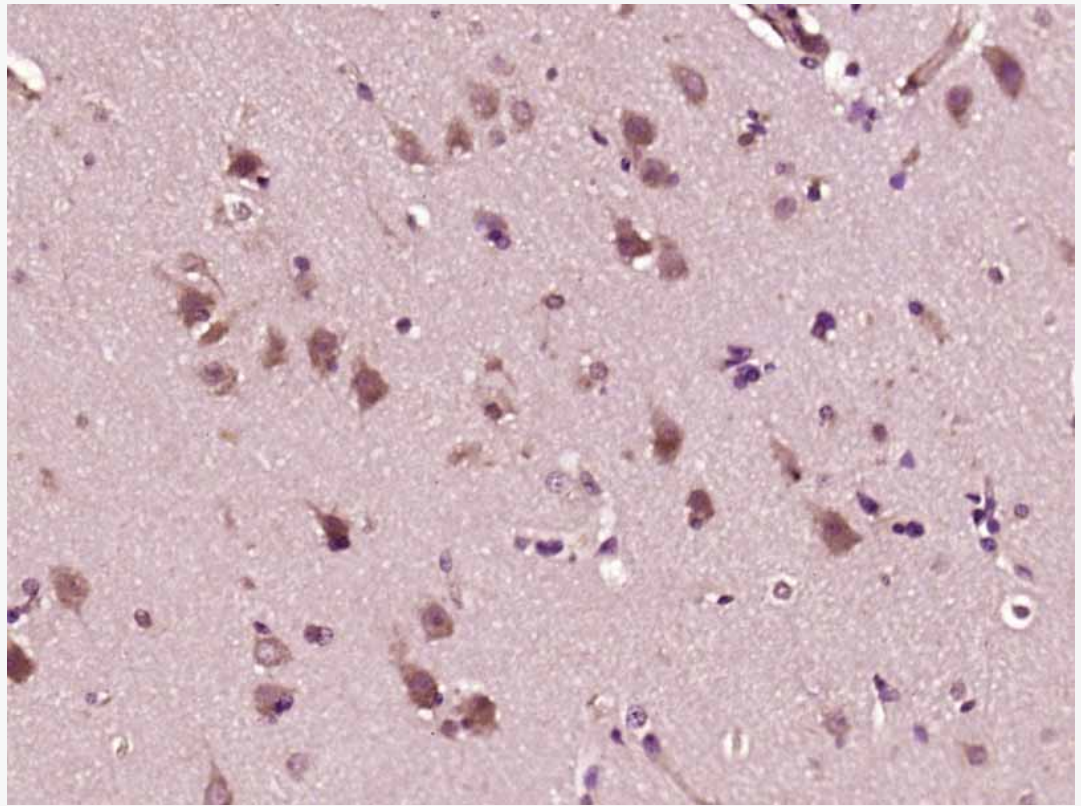
[Entrez Gene: 828](#) Human

[Omim: 114212](#) Human

[SwissProt: Q13938](#) Human

[Unigene: 584744](#) Human

**Product
Picture**



Paraformaldehyde-fixed, paraffin embedded (Human brain glioma); Antigen retrieval by boiling in sodium citrate buffer (pH6.0) for 15min; Block endogenous peroxidase by 3% hydrogen peroxide for 20 minutes; Blocking buffer (normal goat serum) at 37°C for 30min; Antibody incubation with (Calcyphosine 1) Polyclonal Antibody, Unconjugated (SL12161R) at 1:400 overnight at 4°C, followed by operating according to SP Kit(Rabbit) (sp-0023) instructions and DAB staining.