

## Rabbit Anti-DLGAP4 antibody

SL12140R

<b>Product Name</b>	DLGAP4
<b>Chinese Name</b>	PSD95Binding protein4 抗体
<b>Alias</b>	DLGAP4; DAP 4; DAP-4; DAP4; Discs, large (Drosophila) homolog associated protein 4; Disks large associated protein 4; Disks large-associated protein 4; DLGAP4; DLGP4_HUMAN; DLP4; PSD 95/SAP90 binding protein 4; PSD-95/SAP90-binding protein 4; RP5-977B1.6; SAP90/PSD-95-associated protein 4; SAPAP 4; SAPAP-4; SAPAP4.
<b>Research Area</b>	Neurobiology Channel protein The cell membrane 受体
<b>Immunogen Species</b>	Rabbit
<b>Clonality</b>	Polyclonal
<b>React Species</b>	Mouse(predicted:Human,Rat,Dog,Pig,Cow,Horse,Rabbit,Sheep,GuineaPig) WB=1:500-2000 (Paraffin sections need antigen repair)
<b>Applications</b>	not yet tested in other applications. optimal dilutions/concentrations should be determined by the end user.
<b>Theoretical molecular weight</b>	108kDa
<b>Cellular localization</b>	The cell membrane
<b>Form</b>	Liquid
<b>Concentration</b>	1mg/ml
<b>immunogen</b>	KLH conjugated synthetic peptide derived from human SAPAP4/DLGAP4: 261-370/992
<b>Lsotype</b>	IgG
<b>Purification</b>	affinity purified by Protein A
<b>Buffer Solution</b>	1M TBS(pH7.4) with 1% BSA, 3% Proclin300 and 50% Glycerol.
<b>Storage</b>	Shipped at 4°C. Store at -20 °C for one year. Avoid repeated freeze/thaw cycles.
<b>Attention</b>	This product as supplied is intended for research use only, not for use in human, therapeutic or diagnostic applications.
<b>PubMed</b>	<a href="#">PubMed</a>

A guanylate kinase is a phosphotransferase that produces ADP and GDP from the substrates ATP and GMP. SAPAP4 is a 992 amino acid protein that likely localizes to the postsynaptic membrane of neurons to enhance neuronal signaling. SAPAP4 could act as a signaling molecule which interacts with the human genes DLG1 and DLG4/PSD-95. The gene encoding SAPAP4, DLGAP4, maps to human chromosome 20. Comprising approximately 2% of the human genome, chromosome 20 contains nearly 63 million bases that encode over 600 genes, some of which are associated with Creutzfeldt-Jakob disease, amyotrophic lateral sclerosis, spinal muscular atrophy, ring chromosome 20 epilepsy syndrome and Alagille syndrome. Additionally, chromosome 20 contains a region with numerous genes which are thought important for seminal production and may be potential targets for male contraception.

**Function:**

May play a role in the molecular organization of synapses and neuronal cell signaling. Could be an adapter protein linking ion channel to the subsynaptic cytoskeleton. May induce enrichment of PSD-95/SAP90 at the plasma membrane.

**Product Detail**

**Subunit:**

Interacts with DLG1 and DLG4/PSD-95 (By similarity).

**Subcellular Location:**

Membrane; Peripheral membrane protein (By similarity).

**Similarity:**

Belongs to the SAPAP family.

**SWISS:**

Q9Y2H0

**Gene ID:**

22839

**Database links:**

[Entrez Gene: 22839](#) Human

[Entrez Gene: 228836](#) Mouse

[Entrez Gene: 286930](#) Rat

[SwissProt: Q9Y2H0](#) Human

[SwissProt: B1AZP2](#) Mouse

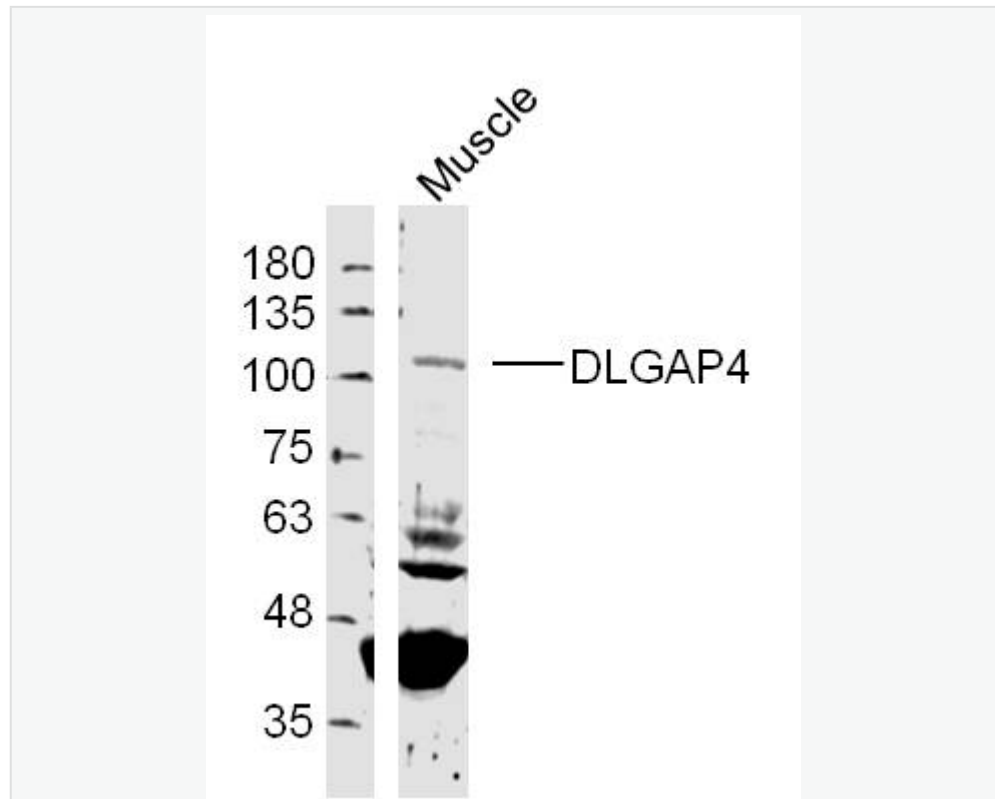
[SwissProt: P97839](#) Rat

[Unigene: 249600](#) Human

[Unigene: 22094](#) Mouse

[Unigene: 11279](#) Rat

**Product Picture**



Sample:

Muscle (Mouse) Lysate at 40 ug

Primary: Anti- DLGAP4(SL12140R)at 1/300 dilution

Secondary: IRDye800CW Goat Anti-Rabbit IgG at 1/20000 dilution



SunLong Biotech Co.,LTD  
Tel: 0086-571-56623320 Fax:0086-571-56623318  
E-mail:sales@sunlongbiotech.com  
www.sunlongbiotech.com

---

Predicted band size: 108 kD

Observed band size: 108 kD