

Rabbit Anti-Striatin 3 antibody

SL12135R

Product Name Striatin 3

Chinese Name CyclinSG2N 抗体

Alias Striatin3; Striatin-3; Striatin 3; Cell cycle autoantigen SG2NA; Cell cycle S/G2 nuclear autoantigen; GS2NA; nuclear autoantigen; S/G2 antigen; SG2NA; Striatin 3; Striatin, calmodulin binding protein 3; STRN3_HUMAN.

Research Area Cell biology Neurobiology Signal transduction Cyclin The cell membrane 受体 Binding protein

Immunogen Species Rabbit

Clonality Polyclonal

React Species Mouse(predicted:Human,Rat,Chicken,Dog,Pig,Cow,Horse,Rabbit)

Applications IHC-P=1:100-500,IHC-F=1:100-500,IF=1:100-500 (Paraffin sections need antigen repair)
not yet tested in other applications.
optimal dilutions/concentrations should be determined by the end user.

Theoretical molecular weight 87kDa

Cellular localization cytoplasmic The cell membrane

Form Liquid

Concentration 1mg/ml

immunogen KLH conjugated synthetic peptide derived from human Striatin 3/SG2NA: 75-180/797

Lsotype IgG

Purification affinity purified by Protein A

Buffer Solution 1M TBS(pH7.4) with 1% BSA, 3% Proclin300 and 50% Glycerol.

Storage Shipped at 4°C. Store at -20 °C for one year. Avoid repeated freeze/thaw cycles.

Attention This product as supplied is intended for research use only, not for use in human, therapeutic or diagnostic applications.

PubMed [PubMed](#)

Striatin, SG2NA, and zinedin, the three mammalian members of the striatin family, are multimodular, WD repeat and calmodulin-binding proteins. Zinedin and SG2NA share with striatin identical protein-protein interaction domains and the same overall domain structure. All three proteins are both cytosolic and membrane-bound and bind calmodulin in the presence of calcium. Striatin is a neuronal, intracellular protein strictly expressed in the somato-dendritic compartment, including spines and subsets of neurons, and is considered as a marker of neuronal polarity. Downregulation of striatin, which is expressed in a few subsets of neurons, impairs the growth of dendrites as well as rat locomotor activity. Zinedin is mainly expressed in the central nervous system, whereas SG2NA is mainly expressed in the brain and muscle.

Function:

Binds calmodulin in a calcium dependent manner. May function as scaffolding or signaling protein.

Subunit:

Interacts with protein phosphatase 2A (PP2A) (Potential).

Subcellular Location:

Cytoplasm. Membrane; Peripheral membrane protein.

**Product
Detail**

Similarity:

Belongs to the WD repeat striatin family.
Contains 6 WD repeats.

SWISS:

Q13033

Gene ID:

29966

Database links:

[Entrez Gene: 29966](#) Human

[Entrez Gene: 94186](#) Mouse

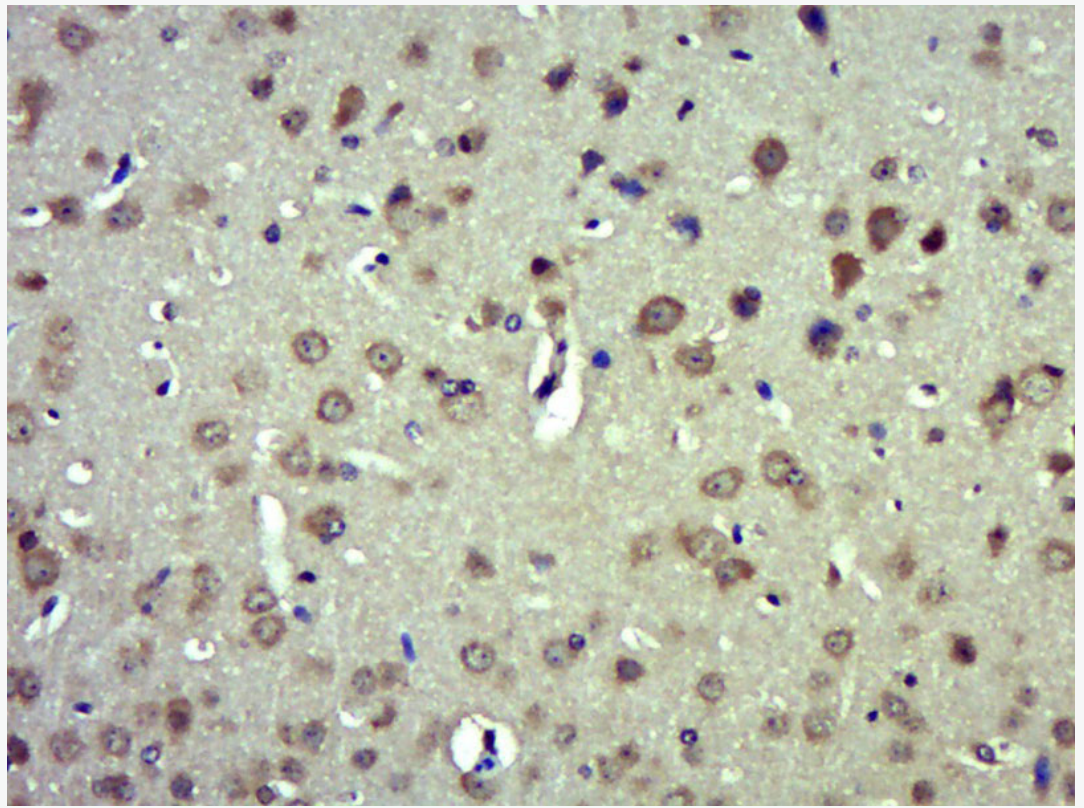
[Entrez Gene: 114520](#) Rat

[SwissProt: Q13033](#) Human

[SwissProt: Q9ERG2](#) Mouse

[SwissProt: P58405](#) Rat

**Product
Picture**



Paraformaldehyde-fixed, paraffin embedded (Mouse brain); Antigen retrieval by boiling in sodium citrate buffer (pH6.0) for 15min; Block endogenous peroxidase by 3% hydrogen peroxide for 20 minutes; Blocking buffer (normal goat serum) at 37°C for 30min; Antibody incubation with (Striatin 3) Polyclonal Antibody, Unconjugated (SL12135R) at 1:500 overnight at 4°C, followed by a conjugated secondary (sp-0023) for 20 minutes and DAB staining.