

Rabbit Anti-SLC35C2 antibody

SL12118R

Product Name	SLC35C2
Chinese Name	溶质载体蛋白家族 35 成员 C2 抗体
Alias	BA394O2.1; C20orf5; CGI-15; FLJ37039; MGC20633; MGC32079; MGC39183; Ovarian cancer-overexpressed gene 1 protein; OVCOV1; S35C2_HUMAN; SLC35C2; Solute carrier family 35 member C2.
Research Area	Tumour Cardiovascular Cell biology Neurobiology Signal transduction The new supersedes the old
Immunogen Species	Rabbit
Clonality	Polyclonal
React Species	Human Mouse Rat(predicted:Chicken Pig Cow Horse Rabbit Sheep) WB=1:500-2000 (Paraffin sections need antigen repair)
Applications	not yet tested in other applications. optimal dilutions/concentrations should be determined by the end user.
Theoretical molecular weight	40kDa
Cellular localization	The cell membrane
Form	Liquid
Concentration	1mg/ml
immunogen	KLH conjugated synthetic peptide derived from human SLC35C2: 81-200/365
Lsotype	IgG
Purification	affinity purified by Protein A
Buffer Solution	Human,Mouse,Rat(predicted:Chicken,Pig,Cow,Horse,Rabbit,Sheep)1M TBS(pH7.4) with 1% BSA, Human,Mouse,Rat(predicted:Chicken,Pig,Cow,Horse,Rabbit,Sheep)3% Proclin300 and 50% Glycerol.
Storage	Shipped at 4°C. Store at -20 °C for one year. Avoid repeated freeze/thaw cycles.
Attention	This product as supplied is intended for research use only, not for use in

human, therapeutic or diagnostic applications.

PubMed

[PubMed](#)

SLC35C2 (solute carrier family 35, member C2), also known as C20orf5, OVCOV1 or CGI-15, is a 365 amino acid multi-pass membrane protein that belongs to the TPT transporter family and exists as multiple alternatively spliced isoforms. Expressed ubiquitously and functionally induced in hypoxic trophoblast cells, SLC35C2 plays a role in the cellular response to tissue hypoxia and is thought to be involved in the pathogenesis of ovarian cancer. The gene encoding SLC35C2 maps to human chromosome 20, which houses over 600 genes some of which are associated with Creutzfeldt-Jakob disease, amyotrophic lateral sclerosis, spinal muscular atrophy, ring chromosome 20 epilepsy syndrome and Alagille syndrome. Additionally, chromosome 20 contains a region with numerous genes which are thought important for seminal production and may be potential targets for male contraception.

Function:

May play an important role in the cellular response to tissue hypoxia.

Subcellular Location:

Membrane.

Product Detail

Tissue Specificity:

Ubiquitously expressed although the level of expression is tissue dependent. Overexpressed in ovarian cancer.

Similarity:

Belongs to the TPT transporter family. SLC35C subfamily.

SWISS:

Q9NQQ7

Gene ID:

51006

Database links:

[Entrez Gene: 514485](#) Cow

[Entrez Gene: 609863](#) Dog

[Entrez Gene: 100056733](#) Horse

[Entrez Gene: 51006](#) Human

[Entrez Gene: 228875](#) Mouse

[Entrez Gene: 100152375](#) Pig

[Entrez Gene: 100349356](#) Rabbit

[Entrez Gene: 311637](#) Rat

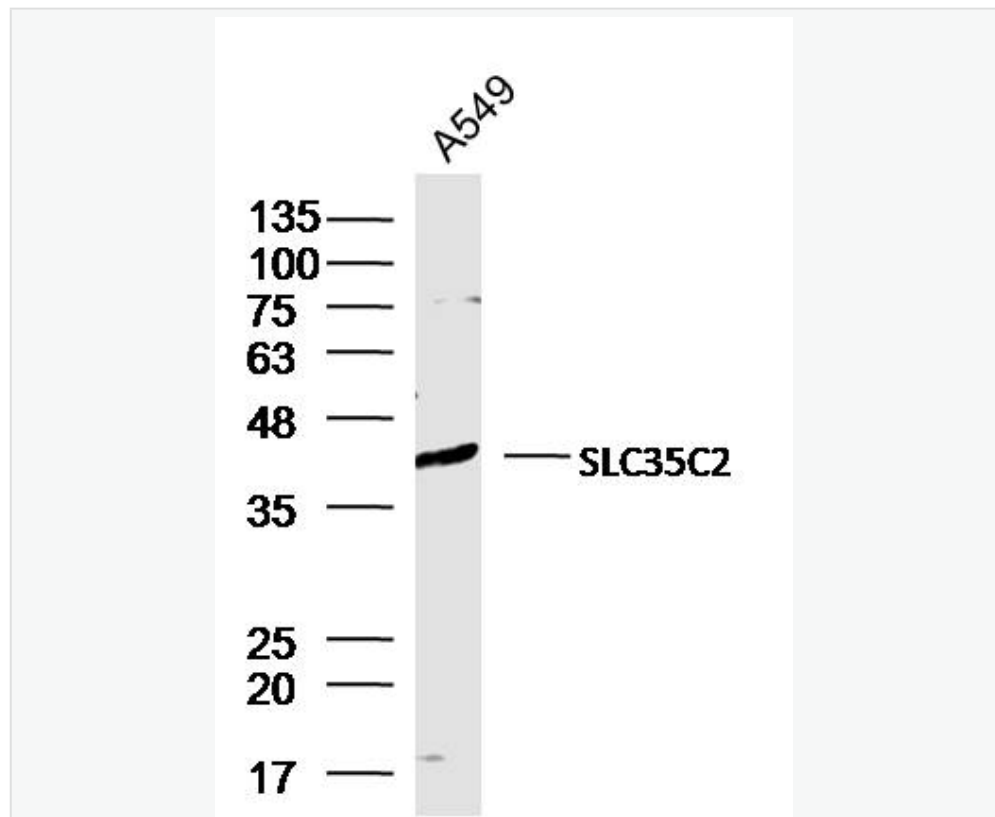
[Entrez Gene: 323482](#) Zebrafish

[SwissProt: Q9NQQ7](#) Human

[SwissProt: Q8VCX2](#) Mouse

[Unigene: 593344](#) Human

Product Picture



Sample:

A549 Cell (Human) Lysate at 30 ug

Primary: Anti-SLC35C2 (SL12118R) at 1/300 dilution



SunLong Biotech Co.,LTD

Tel: 0086-571-56623320 Fax:0086-571-56623318

E-mail:sales@sunlongbiotech.com

www.sunlongbiotech.com

Secondary: IRDye800CW Goat Anti-Rabbit IgG at 1/20000 dilution

Predicted band size: 40 kD

Observed band size: 40 kD