

Rabbit Anti-ADAMTS1 antibody

SL1208R

Product Name ADAMTS1

Chinese Name 整合素样金属蛋白酶与凝血酶 1 型抗体

Alias A disintegrin and metalloproteinase with thrombospondin motifs 1; A disintegrin like and metalloproteinase with thrombospondin type 1 motif 1; A disintegrin-like and metalloproteinase (reprolysin type) with thrombospondin type 1 motif 1; ADAM metalloproteinase with thrombospondin type 1 motif 1; ADAM TS 1; ADAM TS1; ADAMTS 1; ADAMTS; C3 C5; KIAA1346; METH 1; METH1.

Research Area Tumour Cardiovascular Cell biology Signal transduction Cell type markers Cytoskeleton

Immunogen Species Rabbit

Clonality Polyclonal

React Species Human(predicted:Mouse,Rat,Chicken,Pig,Cow,Horse,Sheep)

Applications WB=1:500-2000,IHC-P=1:100-500,IHC-F=1:100-500,IF=1:100-500 (Paraffin sections need antigen repair)
not yet tested in other applications.
optimal dilutions/concentrations should be determined by the end user.

Theoretical molecular weight 106kDa

Cellular localization Extracellular matrix Secretory protein

Form Liquid

Concentration 1mg/ml

immunogen KLH conjugated synthetic peptide derived from mouse ADAMTS1: 851-967/967

Lsotype IgG

Purification affinity purified by Protein A

Buffer Solution 1M TBS(pH7.4) with 1% BSA, 3% Proclin300 and 50% Glycerol.

Storage Shipped at 4°C. Store at -20 °C for one year. Avoid repeated freeze/thaw cycles.

Attention This product as supplied is intended for research use only, not for use in human,

therapeutic or diagnostic applications.

PubMed

[PubMed](#)

ADAMTS1 is a metalloproteinase of the ADAM (A Disintegrin And Metalloproteinase) family containing disintegrin-like domains. ADAMTS1, also known as METH1, was first described as a protein elevated in invasive mouse tumors. Initial findings indicated a role for ADAMTS1 in tumor progression, since the protein was preferentially expressed in more invasive tumor cell lines. ADAMTS1 is necessary for normal growth, fertility, and organ morphology and function.

Function:

Cleaves aggrecan, a cartilage proteoglycan, and may be involved in its turnover (By similarity). Has angiogenic inhibitor activity. Active metalloprotease, which may be associated with various inflammatory processes as well as development of cancer cachexia. May play a critical role in follicular rupture.

Subcellular Location:

Secreted > extracellular space > extracellular matrix.

Post-translational modifications:

The precursor is cleaved by a furin endopeptidase.

**Product
Detail**

Similarity:

Contains 1 disintegrin domain.
Contains 1 peptidase M12B domain.
Contains 3 TSP type-1 domains.

SWISS:

P97857

Gene ID:

11504

Database links:

[Entrez Gene: 9510](#) Human

[Entrez Gene: 11504](#) Mouse

[Entrez Gene: 79252](#) Rat

[Omim: 605174](#) Human

[SwissProt: Q9UHI8](#) Human

[SwissProt: P97857](#) Mouse

[SwissProt: Q9WUQ1](#) Rat

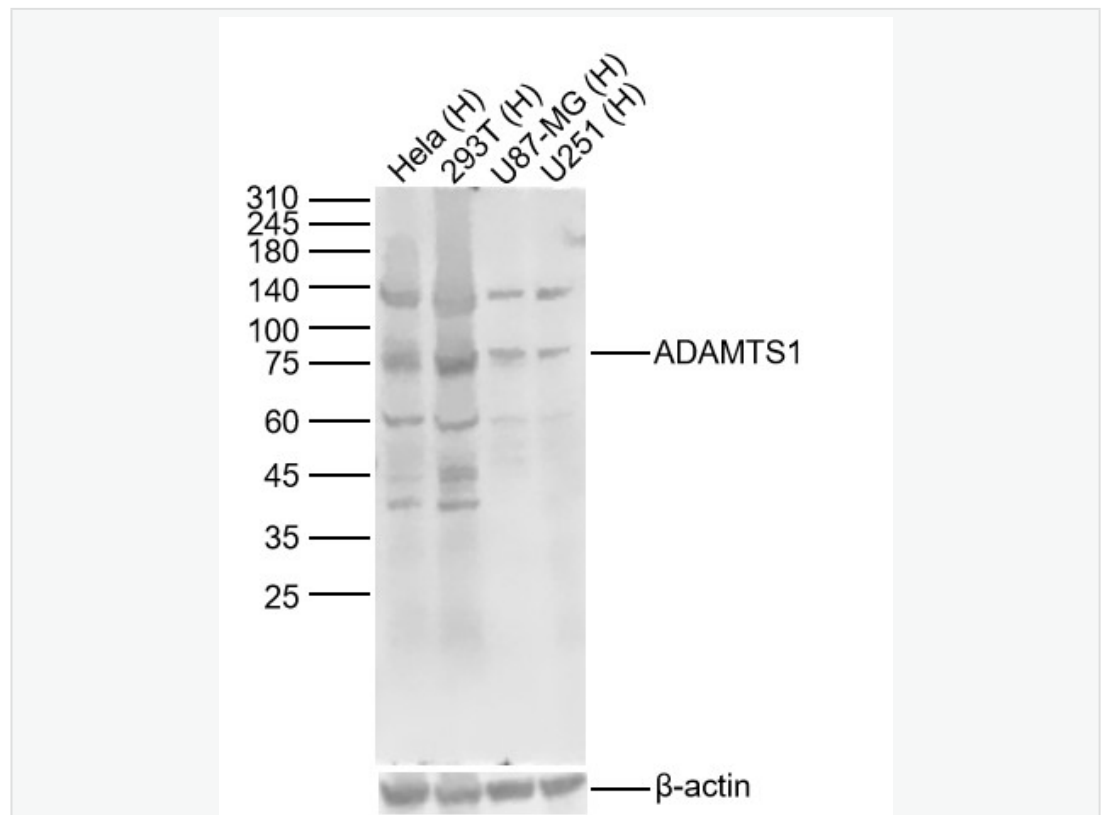
[Unigene: 643357](#) Human

[Unigene: 8230](#) Human

[Unigene: 1421](#) Mouse

[Unigene: 7897](#) Rat

**Product
Picture**



Sample:

Lane 1: Human HeLa cell Lysates

Lane 2: Human 293T cell Lysates

Lane 3: Human U87-MG cell Lysates

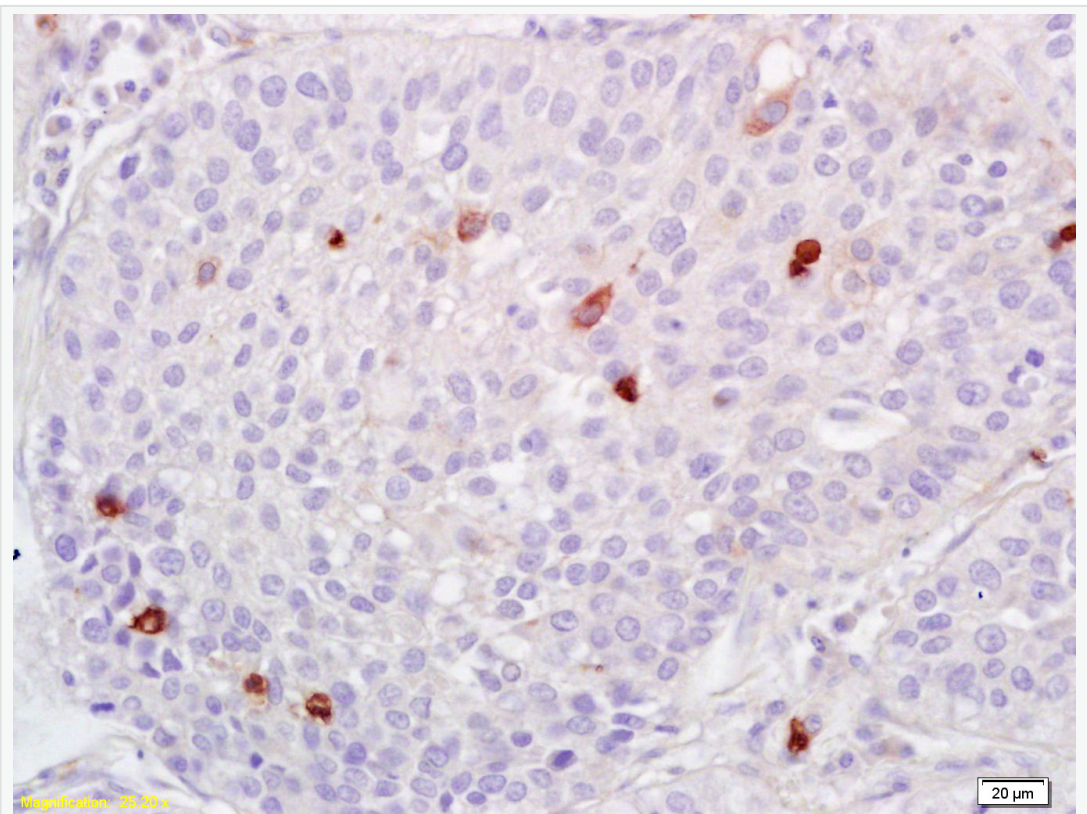
Lane 4: Human U251 cell Lysates

Primary: Anti-ADAMTS1 (SL1208R) at 1/1000 dilution

Secondary: IRDye800CW Goat Anti-Rabbit IgG at 1/20000 dilution

Predicted band size: 106kDa

Observed band size: 80kDa



Tissue/cell: human lung carcinoma; 4% Paraformaldehyde-fixed and paraffin-embedded;

Antigen retrieval: citrate buffer (1M, pH 6.0), Boiling bathing for 15min; Block endogenous peroxidase by 3% Hydrogen peroxide for 30min; Blocking buffer



(normal goat serum,C-0005) at 37°C for 20 min;

Incubation: Anti-ADAMTS1 Polyclonal Antibody, Unconjugated(SL1208R)

1:200, overnight at 4°C, followed by conjugation to the secondary

antibody(SP-0023) and DAB(C-0010) staining