

Rabbit Anti-GLRA4 antibody

SL12089R

Product Name	GLRA4
Chinese Name	甘氨酸受体 $\alpha 4$ 抗体
Alias	Glr4; GLRA4_MOUSE; Glycine receptor subunit alpha-4; Glycine receptor, alpha 4.
Research Area	Neurobiology The cell membrane 受体 G protein-coupled receptor G protein signal
Immunogen Species	Rabbit
Clonality	Polyclonal
React Species	Mouse
Applications	WB=1:500-2000 (Paraffin sections need antigen repair) not yet tested in other applications. optimal dilutions/concentrations should be determined by the end user.
Theoretical molecular weight	45kDa
Cellular localization	The cell membrane
Form	Liquid
Concentration	1mg/ml
immunogen	KLH conjugated synthetic peptide derived from mouse GLRA4: 31-130/455 <Extracellular>
Lsotype	IgG
Purification	affinity purified by Protein A
Buffer Solution	1M TBS(pH7.4) with 1% BSA, 3% Proclin300 and 50% Glycerol.
Storage	Shipped at 4°C. Store at -20 °C for one year. Avoid repeated freeze/thaw cycles.
Attention	This product as supplied is intended for research use only, not for use in human, therapeutic or diagnostic applications.
PubMed	PubMed
Product Detail	The glycine receptor is a neurotransmitter-gated ion channel. Binding of glycine to its receptor increases the chloride conductance and thus produces

hyperpolarization (inhibition of neuronal firing).

Function:

The glycine receptor is a neurotransmitter-gated ion channel. Binding of glycine to its receptor increases the chloride conductance and thus produces hyperpolarization (inhibition of neuronal firing).

Subunit:

Pentamer composed of alpha and beta subunits

Subcellular Location:

Cell junction, synapse, postsynaptic cell membrane; Multi-pass membrane protein. Cell membrane; Multi-pass membrane protein

Similarity:

Belongs to the ligand-gated ion channel (TC 1.A.9) family. Glycine receptor (TC 1.A.9.3) subfamily. GLRA4 sub-subfamily.

SWISS:

Q61603

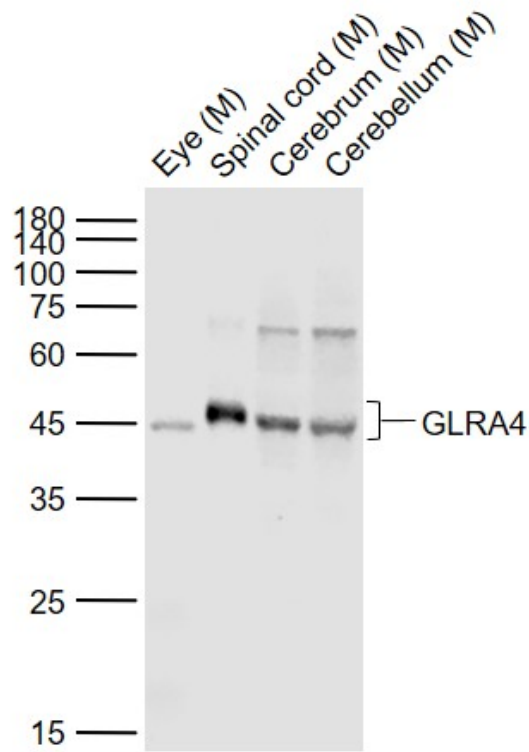
Gene ID:

14657

Database links:

SwissProt: Q61603 Mouse

Product Picture



Sample:

Lane 1: Eye (Mouse) Lysate at 40 ug

Lane 2: Spinal cord (Mouse) Lysate at 40 ug

Lane 3: Cerebrum (Mouse) Lysate at 40 ug

Lane 4: Cerebellum (Mouse) Lysate at 40 ug

Primary: Anti-GLRA4 (SL12089R) at 1/500 dilution

Secondary: IRDye800CW Goat Anti-Rabbit IgG at 1/20000 dilution

Predicted band size: 48 kD

Observed band size: 45 kD