

Rabbit Anti-KCTD8 antibody

SL12087R

Product Name	KCTD8
Chinese Name	钾离子通道多聚体结构域蛋白 8 抗体
Alias	BTB/POZ domain-containing protein KCTD8; KCTD8; KCTD8_HUMAN; Potassium channel tetramerisation domain containing 8.
Research Area	Neurobiology Signal transduction Channel protein The cell membrane 受体 G protein-coupled receptor G protein signal
Immunogen Species	Rabbit
Clonality	Polyclonal
React Species	Mouse,Rat(predicted:Human,Chicken,Dog,Pig,Cow,Horse,Rabbit,Sheep) WB=1:500-2000 (Paraffin sections need antigen repair)
Applications	not yet tested in other applications. optimal dilutions/concentrations should be determined by the end user.
Theoretical molecular weight	52kDa
Cellular localization	The cell membrane
Form	Liquid
Concentration	1mg/ml
immunogen	KLH conjugated synthetic peptide derived from human KCTD8: 381-473/473
Lsotype	IgG
Purification	affinity purified by Protein A
Buffer Solution	Mouse,Rat(predicted:Human,Chicken,Dog,Pig,Cow,Horse,Rabbit,Sheep)1M TBS(pH7.4) with 1% BSA, Mouse,Rat(predicted:Human,Chicken,Dog,Pig,Cow,Horse,Rabbit,Sheep)3% Proclin300 and 50% Glycerol.
Storage	Shipped at 4°C. Store at -20 °C for one year. Avoid repeated freeze/thaw cycles.
Attention	This product as supplied is intended for research use only, not for use in human, therapeutic or diagnostic applications.
PubMed	PubMed

Auxiliary subunit of GABA-B receptors that determine the pharmacology and kinetics of the receptor response. Increases agonist potency and markedly alter the G-protein signaling of the receptors by accelerating onset and promoting desensitization.

Function:

Auxiliary subunit of GABA-B receptors that determine the pharmacology and kinetics of the receptor response. Increases agonist potency and markedly alter the G-protein signaling of the receptors by accelerating onset and promoting desensitization (By similarity).

Subunit:

Interacts as a tetramer with GABRB1 and GABRB2 (By similarity).

Subcellular Location:

Cell junction > synapse > presynaptic cell membrane. Cell junction > synapse > postsynaptic cell membrane.

Similarity:

Contains 1 BTB (POZ) domain.

Product Detail

SWISS:

Q6ZWB6

Gene ID:

386617

Database links:

[Entrez Gene: 386617](#) Human

[Entrez Gene: 243043](#) Mouse

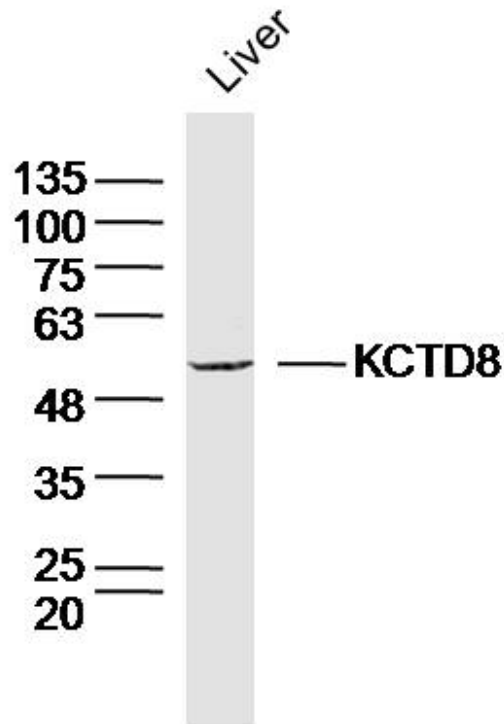
[SwissProt: Q6ZWB6](#) Human

[SwissProt: Q50H33](#) Mouse

[Unigene: 479644](#) Human

[Unigene: 234821](#) Mouse

Product Picture



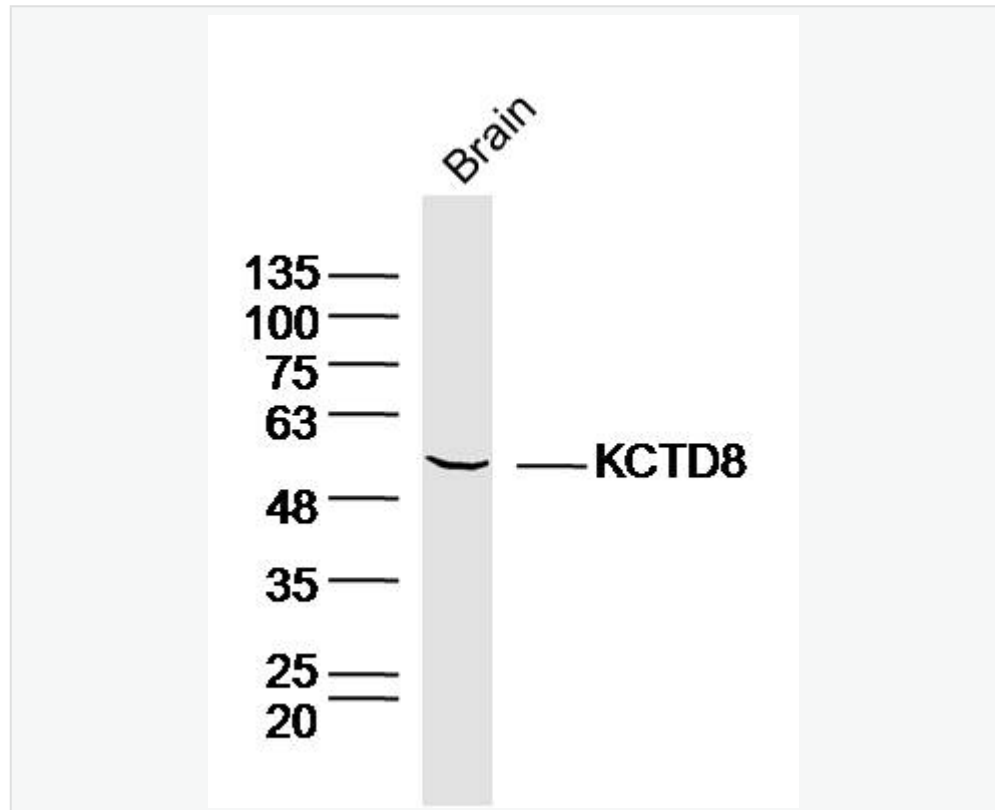
Sample: Liver (Mouse) Lysate at 40 ug

Primary: Anti-KCTD8 (SL12087R) at 1/300 dilution

Secondary: IRDye800CW Goat Anti-Rabbit IgG at 1/20000 dilution

Predicted band size: 52kD

Observed band size: 52kD



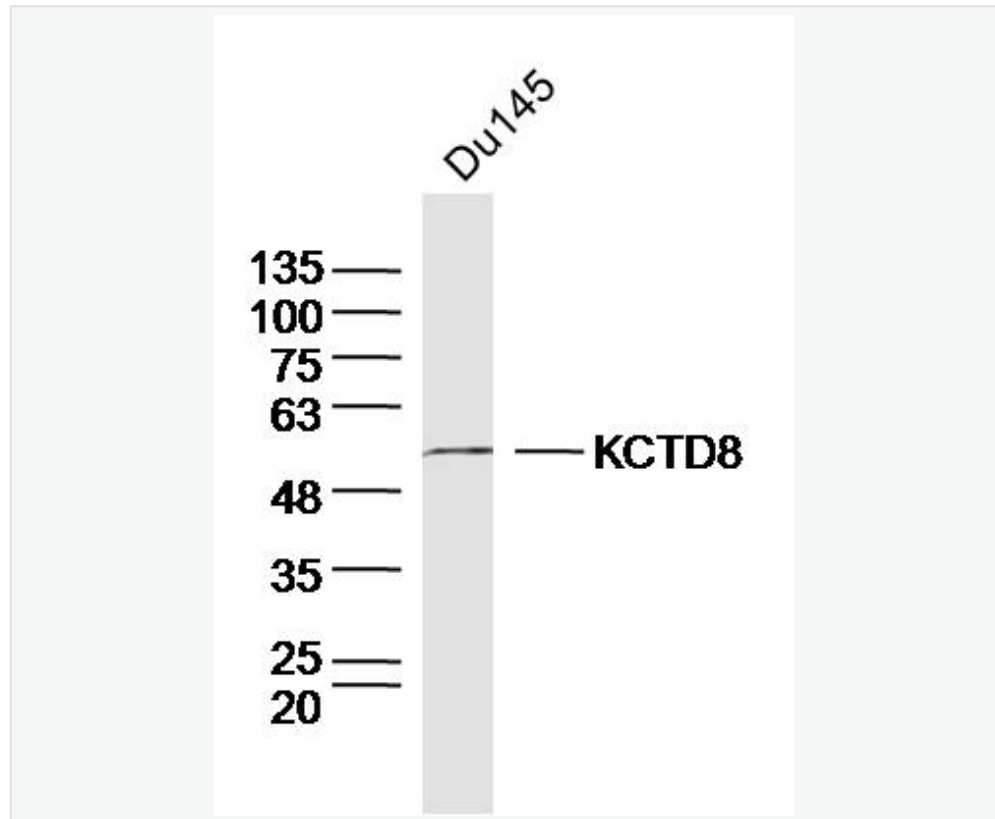
Sample: Brain (Mouse) Lysate at 40 ug

Primary: Anti-KCTD8 (SL12087R) at 1/300 dilution

Secondary: IRDye800CW Goat Anti-Rabbit IgG at 1/20000 dilution

Predicted band size: 52kD

Observed band size: 52kD



Sample: Du145 Cell (Human) Lysate at 30 ug

Primary: Anti-KCTD8 (SL12087R) at 1/300 dilution

Secondary: IRDye800CW Goat Anti-Rabbit IgG at 1/20000 dilution

Predicted band size: 52kD

Observed band size: 52kD