

Rabbit Anti-GABRR1 antibody

SL12084R

Product Name	GABRR1
Chinese Name	G 氨基丁酸 A 型受体 rho1/GABAA Rp1 抗体
Alias	bA135P14.1 (gamma-aminobutyric acid (GABA) receptor rho 1); GABA(A) receptor subunit rho-1; gamma aminobutyric acid receptor rho 1; gamma-aminobutyric acid (GABA) A receptor rho-1; gamma-aminobutyric acid (GABA) receptor rho 1; Gamma-aminobutyric acid receptor subunit rho-1; MGC163216; GBRR1_HUMAN.
Research Area	Neurobiology Channel protein The cell membrane 受体 G protein-coupled receptor G protein signal
Immunogen Species	Rabbit
Clonality	Polyclonal
React Species	Human,Mouse,Rat(predicted:Dog,Pig,Cow,Rabbit) WB=1:500-2000 (Paraffin sections need antigen repair)
Applications	not yet tested in other applications. optimal dilutions/concentrations should be determined by the end user.
Theoretical molecular weight	53kDa
Cellular localization	The cell membrane
Form	Liquid
Concentration	1mg/ml
immunogen	KLH conjugated synthetic peptide derived from human GABRR1: 201-300/479 <Extracellular>
Lsotype	IgG
Purification	affinity purified by Protein A
Buffer Solution	Human,Mouse,Rat(predicted:Dog,Pig,Cow,Rabbit)1M TBS(pH7.4) with 1% BSA, Human,Mouse,Rat(predicted:Dog,Pig,Cow,Rabbit)3% Proclin300 and 50% Glycerol.
Storage	Shipped at 4°C. Store at -20 °C for one year. Avoid repeated freeze/thaw cycles.

Attention

This product as supplied is intended for research use only, not for use in human, therapeutic or diagnostic applications.

PubMed

[PubMed](#)

GABA is the major inhibitory neurotransmitter in the mammalian brain where it acts at GABA receptors, which are ligand-gated chloride channels. GABRR1 is a member of the rho subunit family. Several transcript variants encoding different isoforms have been found for this gene. [provided by RefSeq, Feb 2012]

Function:

GABA is the major inhibitory neurotransmitter in the mammalian brain where it acts at GABA receptors, which are ligand gated chloride channels.

GABRR1 is a member of the rho subunit family

Subunit:

Generally pentameric. There are five types of GABA(A) receptor chains: alpha, beta, gamma, delta, and rho. Interacts with SQSTM1

Subcellular Location:

Cell junction, synapse, postsynaptic cell membrane; Multipass membrane protein. Cell membrane; Multipass membrane protein.

Product Detail

Tissue Specificity:

Highly expressed in the retina and in a lesser extent in brain, lung and thymus.

Similarity:

Belongs to the ligand-gated ion channel (TC 1.A.9) family.

Gamma-aminobutyric acid receptor (TC 1.A.9.5) subfamily. GABRR1 sub-subfamily.

SWISS:

P24046

Gene ID:

2569

Database links:

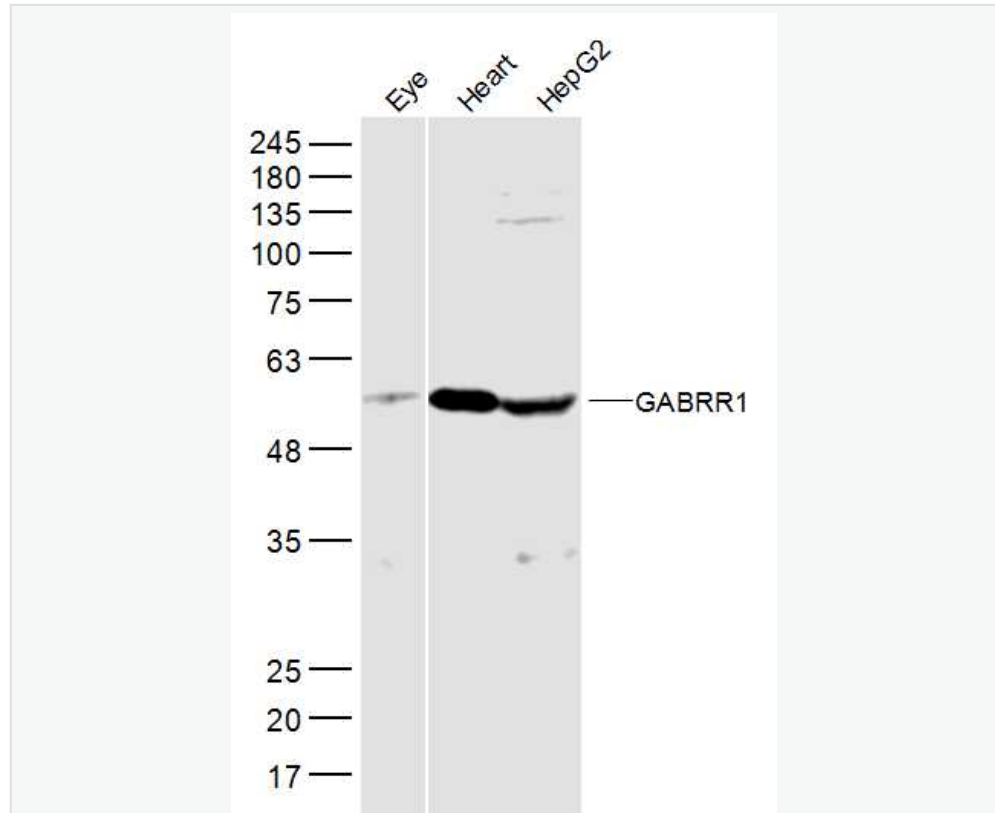
[Entrez Gene: 2569](#) Human

[Omim: 137161](#) Human

[SwissProt: P24046](#) Human

[Unigene: 99927](#) Human

Product Picture



Sample:

Eye (Mouse) Lysate at 40 ug

Heart (Mouse) Lysate at 40 ug

HepG2 (Human) Lysate at 30 ug

Primary: Anti-GABRR1 (SL12084R) at 1/300 dilution

Secondary: IRDye800CW Goat Anti-Rabbit IgG at 1/20000 dilution

Predicted band size: 53 kD

Observed band size: 53 kD



SunLong Biotech Co.,LTD
Tel: 0086-571-56623320 Fax:0086-571-56623318
E-mail:sales@sunlongbiotech.com
www.sunlongbiotech.com
