

## Rabbit Anti-5HT7 Receptor antibody

SL12056R

<b>Product Name</b>	5HT7 Receptor
<b>Chinese Name</b>	5-羟色胺受体 7 抗体
<b>Alias</b>	SR-7; HT 7; 5 HT X; 5 hydroxytryptamine (serotonin) receptor 7 (adenylate cyclase coupled); 5 hydroxytryptamine (serotonin) receptor 7; 5 hydroxytryptamine receptor 7; 5-HT-7; 5-HT-X; 5-HT7; 5-hydroxytryptamine receptor 7; 5HT7; 5HT7R_HUMAN; HTR7; Serotonin 5 HT 7 receptor; Serotonin receptor 7.
<b>Research Area</b>	Neurobiology The cell membrane 受体 G protein-coupled receptor The new supersedes the old G protein signal
<b>Immunogen Species</b>	Rabbit
<b>Clonality</b>	Polyclonal
<b>React Species</b>	Human Mouse Rat WB=1:500-2000,IHC-P=1:100-500,IHC-F=1:100-500,IF=1:100-500 (Paraffin sections need antigen repair)
<b>Applications</b>	not yet tested in other applications. optimal dilutions/concentrations should be determined by the end user.
<b>Theoretical molecular weight</b>	54kDa
<b>Cellular localization</b>	The cell membrane
<b>Form</b>	Liquid
<b>Concentration</b>	1mg/ml
<b>immunogen</b>	KLH conjugated synthetic peptide derived from human 5HT7 Receptor/SR-7: 51-150/479 <Extracellular>
<b>Lsotype</b>	IgG
<b>Purification</b>	affinity purified by Protein A
<b>Buffer Solution</b>	Human,Mouse,Rat1M TBS(pH7.4) with 1% BSA, Human,Mouse,Rat3% Proclin300 and 50% Glycerol.
<b>Storage</b>	Shipped at 4°C. Store at -20 °C for one year. Avoid repeated freeze/thaw cycles.

**Attention**

This product as supplied is intended for research use only, not for use in human, therapeutic or diagnostic applications.

**PubMed**

[PubMed](#)

The neurotransmitter, serotonin, is thought to play a role in various cognitive and behavioral functions. The serotonin receptor encoded by this gene belongs to the superfamily of G protein-coupled receptors and the gene is a candidate locus for involvement in autistic disorder and other neuropsychiatric disorders. Three splice variants have been identified which encode proteins that differ in the length of their carboxy terminal ends. [provided by RefSeq, Jul 2008]

**Function:**

This is one of the several different receptors for 5-hydroxytryptamine (serotonin), a biogenic hormone that functions as a neurotransmitter, a hormone, and a mitogen. The activity of this receptor is mediated by G proteins that stimulate adenylate cyclase.

**Subcellular Location:**

Cell membrane; Multi-pass membrane protein.

**Tissue Specificity:**

Isoform A is the predominant isoform in spleen, caudate and hippocampus. Isoform B is expressed at lower levels. Isoform D is a minor isoform in term of expression.

**Product Detail**

**Similarity:**

Belongs to the G-protein coupled receptor 1 family.

**SWISS:**

P34969

**Gene ID:**

3363

**Database links:**

[Entrez Gene: 3363](#) Human

[Entrez Gene: 15566](#) Mouse

[Entrez Gene: 65032](#) Rat

[Entrez Gene: 100135549](#) Guinea pig

[Omim: 182137](#) Human

[SwissProt: P50407](#) Guinea pig

[SwissProt: P34969](#) Human

[SwissProt: P32304](#) Mouse

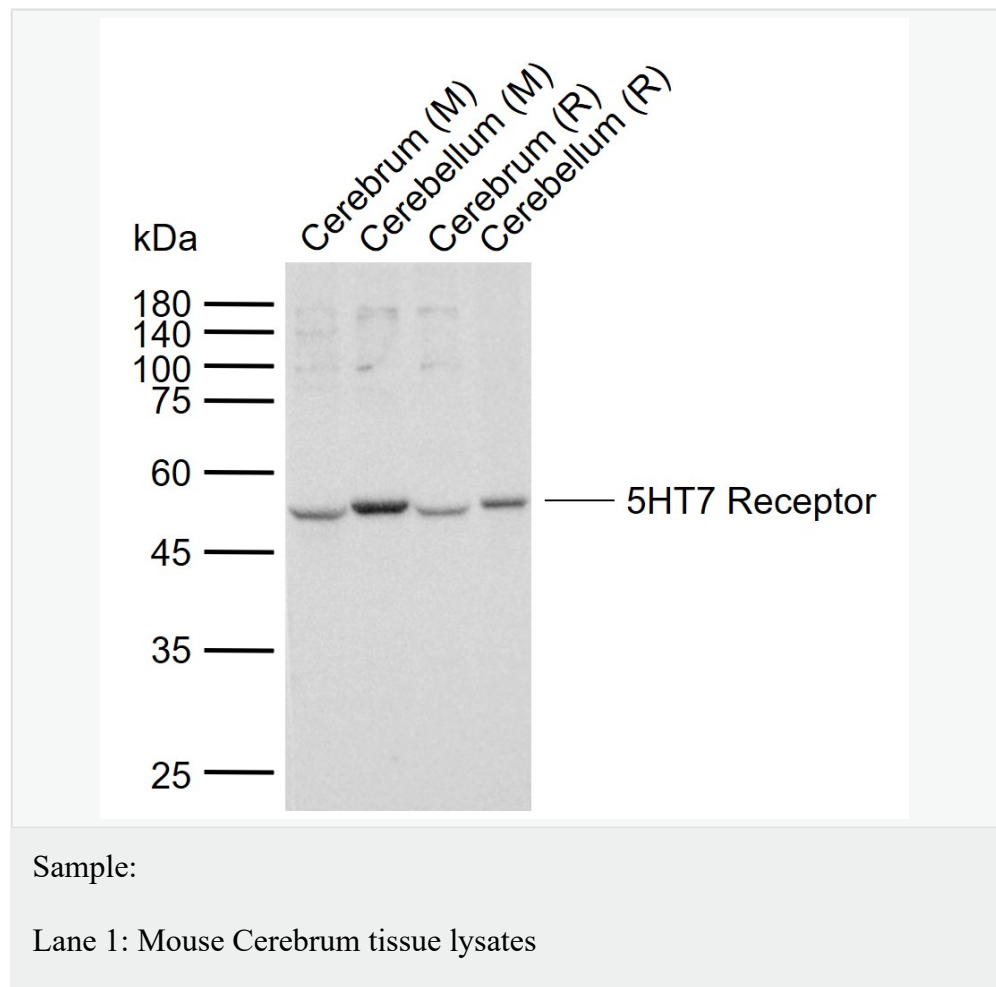
[SwissProt: P32305](#) Rat

[Unigene: 73739](#) Human

[Unigene: 254266](#) Mouse

[Unigene: 87132](#) Rat

**Product Picture**



Lane 2: Mouse Cerebellum tissue lysates

Lane 3: Rat Cerebrum tissue lysates

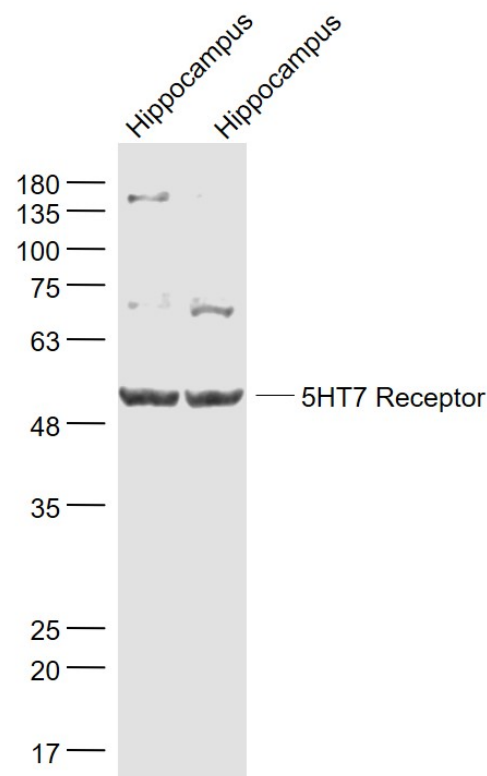
Lane 4: Rat Cerebellum tissue lysates

Primary: Anti-5HT7 Receptor (SL12056R) at 1/1000 dilution

Secondary: IRDye800CW Goat Anti-Rabbit IgG at 1/20000 dilution

Predicted band size: 54 kDa

Observed band size: 50 kDa



Sample:

Hippocampus (Mouse) Lysate at 40 ug



Hippocampus(Rat) Lysate at 40 ug

Primary: Anti- 5HT7 Receptor (SL12056R) at 1/1000 dilution

Secondary: IRDye800CW Goat Anti-Rabbit IgG at 1/20000 dilution

Predicted band size: 54 kD

Observed band size: 54 kD