

Rabbit Anti-5HT1F Receptor antibody

SL12048R

Product Name 5HT1F Receptor

Chinese Name 5-羟色胺受体 1F 抗体

Alias SR-1F; 5 HT 1F; 5 HT1F; 5 hydroxytryptamine (serotonin) receptor 1F; 5 hydroxytryptamine 1F receptor; 5 hydroxytryptamine receptor 1E beta; 5 hydroxytryptamine receptor 1F; 5 hydroxytryptamine serotonin receptor 1E beta; 5 hydroxytryptamine serotonin receptor 1F; 5HT 1F; 5HT1F; HTR 1F; HTR1EB; HTR1EL; HTR1F; MR 77; MR77; Serotonin receptor 1E beta; Serotonin receptor gene; 5HT1F_HUMAN.

Research Area Neurobiology The cell membrane 受体 G protein-coupled receptor The new supersedes the old G protein signal

Immunogen Species Rabbit

Clonality Polyclonal

React Species Human, Mouse, Rat, (predicted: Dog, Pig, Cow, Rabbit, Sheep,)
WB=1:500-2000,IHC-P=1:100-500,IHC-F=1:100-500,IF=1:100-500 (Paraffin sections need antigen repair)

Applications not yet tested in other applications.
optimal dilutions/concentrations should be determined by the end user.

Theoretical molecular weight 42kDa

Cellular localization The cell membrane

Form Liquid

Concentration 1mg/ml

immunogen KLH conjugated synthetic peptide derived from human 5HT1F Receptor/SR-1F: 1-100/366 <Extracellular>

Lsotype IgG

Purification affinity purified by Protein A

Buffer Solution 1M TBS(pH7.4) with 1% BSA, 3% Proclin300 and 50% Glycerol.



Storage	Shipped at 4°C. Store at -20 °C for one year. Avoid repeated freeze/thaw cycles.
Attention	This product as supplied is intended for research use only, not for use in human, therapeutic or diagnostic applications.
PubMed	PubMed The members of the G-protein-coupled receptor family are distinguished by their slow transmitting response to ligand binding. These seven transmembrane proteins include the adrenergic, serotonin and dopamine receptors. The effect of the signaling molecule can be excitatory or inhibitory depending on the type of receptor to which it binds. b-adrenergic bound to adrenaline activates adenylyl cyclase, while a2-adrenergic receptor bound to adrenaline inhibits adenylyl cyclase. Like the a2-adrenergic receptor, serotonin receptor functions are also mediated by G proteins that inhibit the activity of adenylyl cyclase. The serotonin receptors have been classified into several categories, designated SR-1–7 (5HT1–7). Subtypes within the SR-1 group include SR-1A, -1B, -1D, -1E and -1F.
Product Detail	<p>Function: 5HT1F is one of the several different receptors for 5-hydroxytryptamine (serotonin), a biogenic hormone that functions as a neurotransmitter, a hormone, and a mitogen. The activity of this receptor is mediated by G proteins that inhibit adenylyl cyclase activity. 5HT1F is a member of the GPCR family (subfamily: Serotonin). Expression of 5HT1F has been reported in various brain structures, including cortex, hippocampus, trigeminal ganglia, and cerebral blood vessels. Expression in peripheral tissues is limited to uterus, mesentery, and artery. No expression has been detected in heart, kidney, liver, pancreas, or spleen.</p> <p>Subcellular Location: Cell membrane; Multi pass membrane protein.</p> <p>Similarity: Belongs to the G-protein coupled receptor 1 family.</p> <p>SWISS: P30939</p> <p>Gene ID: 3355</p> <p>Database links: Entrez Gene: 3355 Human Entrez Gene: 15557 Mouse</p>

[Entrez Gene: 60448](#) Rat

[Omim: 182134](#) Human

[SwissProt: P30939](#) Human

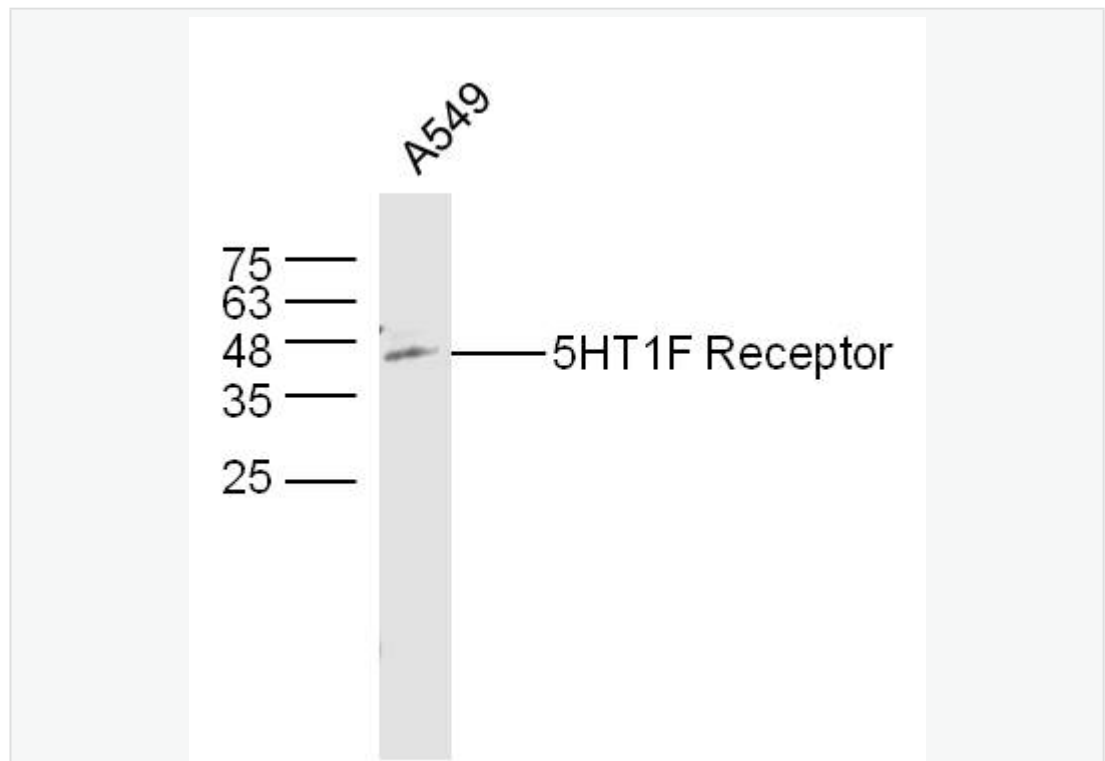
[SwissProt: Q02284](#) Mouse

[SwissProt: P30940](#) Rat

[Unigene: 248136](#) Human

[Unigene: 44301](#) Rat

**Product
Picture**



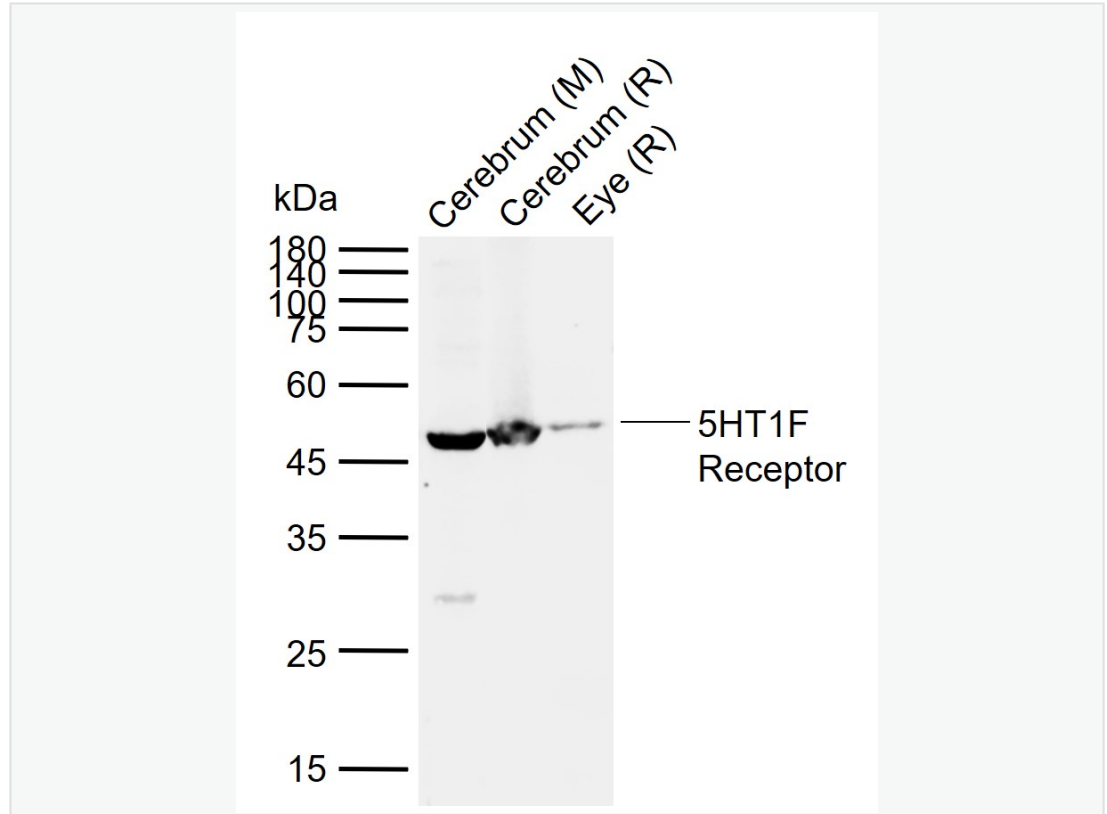
Sample: A549 Cell (Human) Lysate at 40 ug

Primary: Anti- 5HT1F Receptor (SL12048R) at 1/300 dilution

Secondary: IRDye800CW Goat Anti-Rabbit IgG at 1/20000 dilution

Predicted band size: 42 kD

Observed band size: 42 kD



Sample:

Lane 1: Mouse Cerebrum tissue lysates

Lane 2: Rat Cerebrum tissue lysates

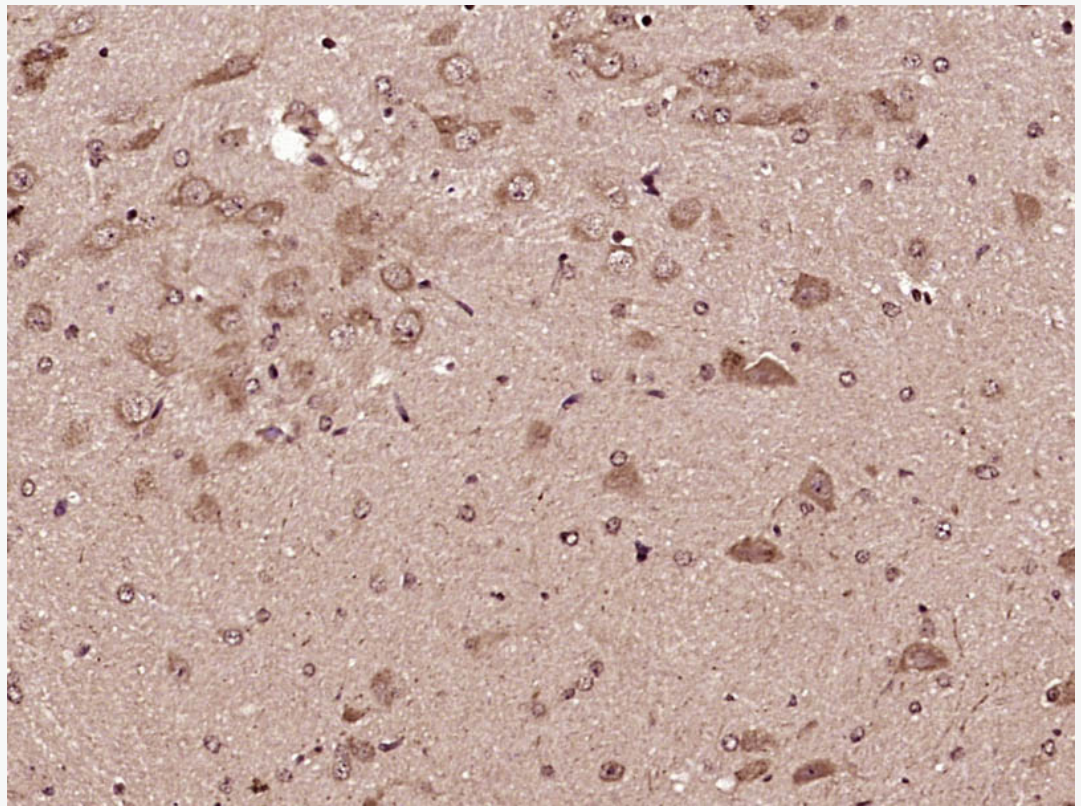
Lane 3: Rat Eye tissue lysates

Primary: Anti-5HT1F Receptor (SL12048R) at 1/1000 dilution

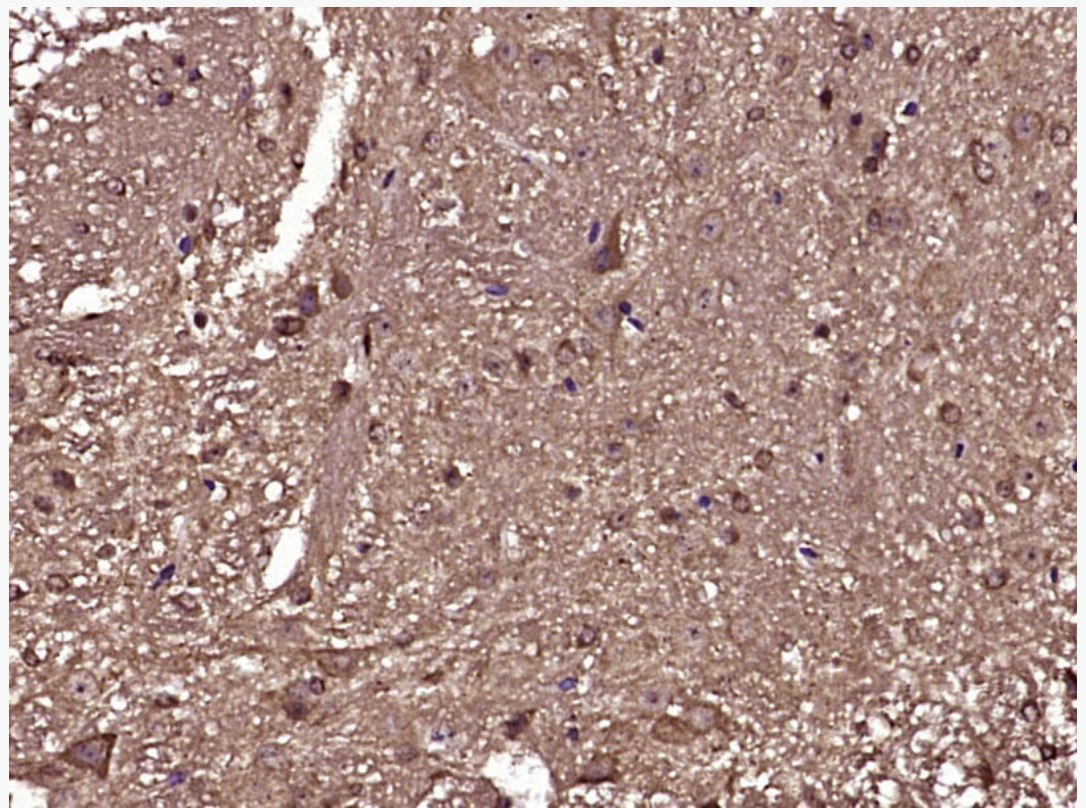
Secondary: IRDye800CW Goat Anti-Rabbit IgG at 1/20000 dilution

Predicted band size: 42 kDa

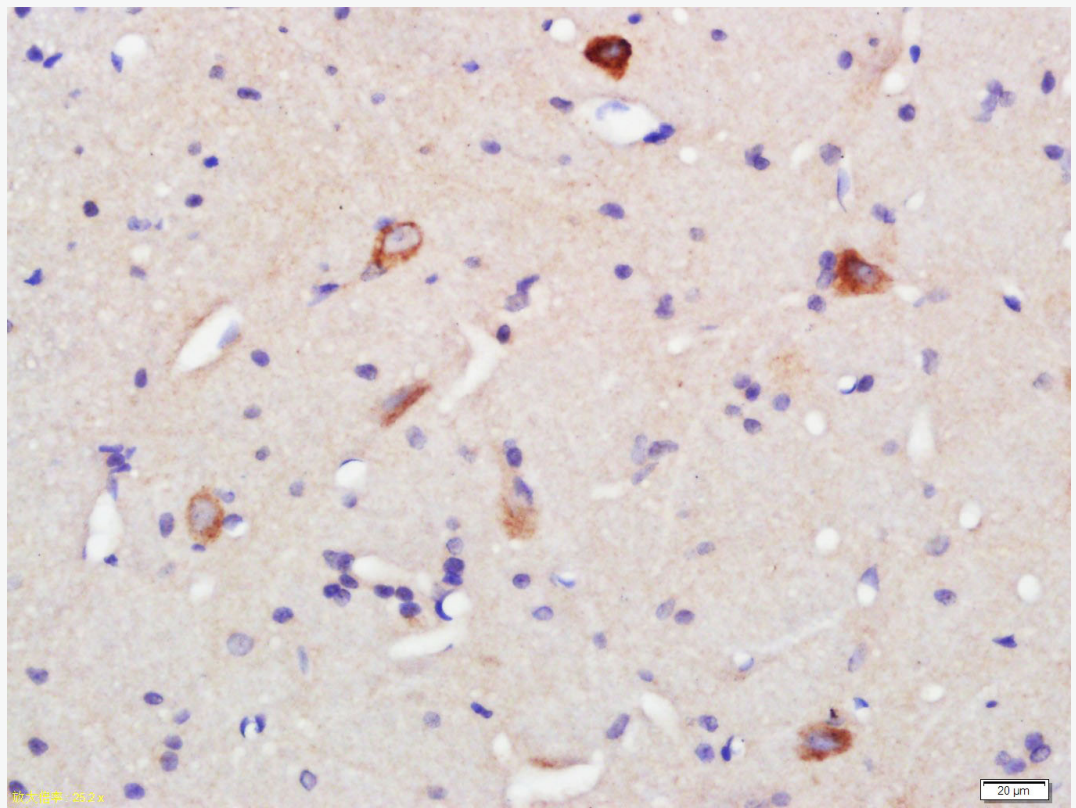
Observed band size: 48 kDa



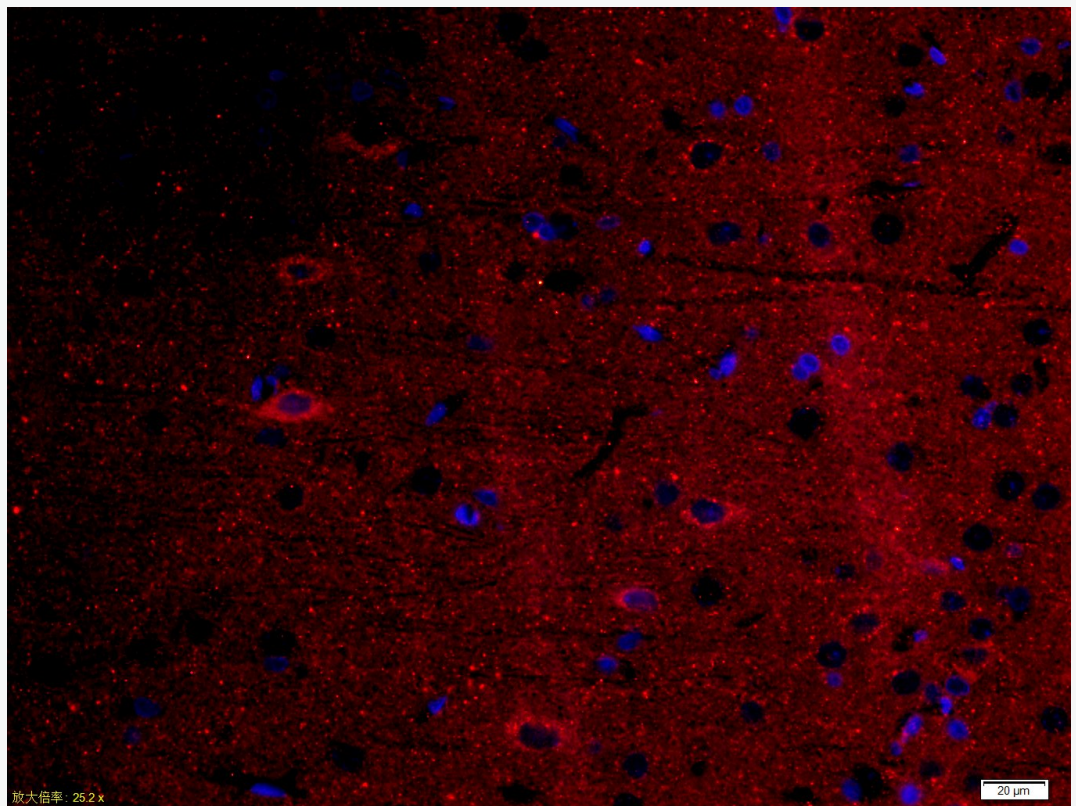
Paraformaldehyde-fixed, paraffin embedded (Mouse brain); Antigen retrieval by boiling in sodium citrate buffer (pH6.0) for 15min; Block endogenous peroxidase by 3% hydrogen peroxide for 20 minutes; Blocking buffer (normal goat serum) at 37°C for 30min; Antibody incubation with (5HT1F Receptor) Polyclonal Antibody, Unconjugated (SL12048R) at 1:400 overnight at 4°C, followed by operating according to SP Kit(Rabbit) (sp-0023) instructions and DAB staining.



Paraformaldehyde-fixed, paraffin embedded (Mouse spinal cord); Antigen retrieval by boiling in sodium citrate buffer (pH6.0) for 15min; Block endogenous peroxidase by 3% hydrogen peroxide for 20 minutes; Blocking buffer (normal goat serum) at 37°C for 30min; Antibody incubation with (5HT1F Receptor) Polyclonal Antibody, Unconjugated (SL12048R) at 1:400 overnight at 4°C, followed by operating according to SP Kit(Rabbit) (sp-0023) instructions and DAB staining.



Tissue/cell: rat brain tissue; 4% Paraformaldehyde-fixed and paraffin-embedded;
Antigen retrieval: citrate buffer (1M, pH 6.0), Boiling bathing for 15min; Block
endogenous peroxidase by 3% Hydrogen peroxide for 30min; Blocking buffer
(normal goat serum,C-0005) at 37°C for 20 min;
Incubation: Anti-5HT1F Polyclonal Antibody, Unconjugated(SL12048R) 1:500,
overnight at 4°C, followed by conjugation to the secondary antibody(SP-0023) and
DAB(C-0010) staining



Tissue/cell: rat brain tissue;4% Paraformaldehyde-fixed and paraffin-embedded;
Antigen retrieval: citrate buffer (1M, pH 6.0), Boiling bathing for 15min;
Blocking buffer (normal goat serum,C-0005) at 37°C for 20 min;
Incubation: Anti-5HT1F Receptor Polyclonal Antibody,
Unconjugated(SL12048R) 1:200, overnight at 4°C; The secondary antibody was
Goat Anti-Rabbit IgG, Cy3 conjugated(SL0295G-Cy3)used at 1:200 dilution for
40 minutes at 37°C. DAPI(5ug/ml,blue,C-0033) was used to stain the cell nuclei