

## Rabbit Anti-ADRA2C antibody

SL12040R

<b>Product Name</b>	ADRA2C
<b>Chinese Name</b>	$\alpha$ 2C-AR 肾上腺素能受体抗体
<b>Alias</b>	alpha 2C Adrenergic Receptor; Adra 2c; Adra 2c; ADRA2C; ADRA2L2; ADRA2L2; ADRA2RL2; ADRA2RL2; ADRARL2; ADRARL2; Adrenergic alpha 2C receptor; Adrenoceptor alpha 2C; Alpha 2C adrenergic receptor; Alpha 2C adrenergic receptor subtype C4; Alpha 2C adrenoceptor; Alpha 2C adrenoceptor; Alpha 2CAR; alpha2 AR C4; alpha2 AR C4; alpha2 C4; alpha2 C4; alpha2C; alpha2C; ALPHA2CAR; alpha2cii-adrenergic receptor; Subtype alpha2 C4; Subtype alpha2 C4; ADA2C_HUMAN.
<b>Research Area</b>	Neurobiology Signal transduction Growth factors and hormones The cell membrane 受体 G protein-coupled receptor G protein signal
<b>Immunogen Species</b>	Rabbit
<b>Clonality</b>	Polyclonal
<b>React Species</b>	Human(predicted:Mouse,Rat,Dog,Pig)
<b>Applications</b>	WB=1:500-2000,Flow-Cyt=1 $\mu$ g/Test (Paraffin sections need antigen repair not yet tested in other applications. optimal dilutions/concentrations should be determined by the end user.
<b>Theoretical molecular weight</b>	49kDa
<b>Cellular localization</b>	The cell membrane
<b>Form</b>	Liquid
<b>Concentration</b>	1mg/ml
<b>immunogen</b>	KLH conjugated synthetic peptide derived from human ADRA2C/alpha 2C Adrenergic Receptor: 21-120/462 <Extracellular>
<b>Lsotype</b>	IgG
<b>Purification</b>	affinity purified by Protein A
<b>Buffer Solution</b>	1M TBS(pH7.4) with 1% BSA, 3% Proclin300 and 50% Glycerol.
<b>Storage</b>	Shipped at 4°C. Store at -20 °C for one year. Avoid repeated freeze/thaw cycles.

**Attention**

This product as supplied is intended for research use only, not for use in human, therapeutic or diagnostic applications.

**PubMed**

[PubMed](#)

Alpha-2-adrenergic receptors are members of the G protein-coupled receptor superfamily. They include 3 highly homologous subtypes: alpha2A, alpha2B, and alpha2C. These receptors have a critical role in regulating neurotransmitter release from sympathetic nerves and from adrenergic neurons in the central nervous system. The mouse studies revealed that both the alpha2A and alpha2C subtypes were required for normal presynaptic control of transmitter release from sympathetic nerves in the heart and from central noradrenergic neurons. The alpha2A subtype inhibited transmitter release at high stimulation frequencies, whereas the alpha2C subtype modulated neurotransmission at lower levels of nerve activity. This gene encodes the alpha2C subtype, which contains no introns in either its coding or untranslated sequences. [provided by RefSeq, Jul 2008]

**Function:**

The alpha 2C Adrenergic Receptor controls the release of neurotransmitter from central adrenergic neurons and from sympathetic nerves in the heart. This receptor also plays a role in cognitive and behavioral function. Two variants are produced by alternative splicing. Alpha 2C Adrenergic Receptor has been reported extensively in the brain. Blood, corpus cavernosum, kidney, and heart tissues have also been reported to express the protein.

**Product Detail**

**Subcellular Location:**

Cell membrane; Multi-pass membrane protein.

**Similarity:**

Belongs to the G-protein coupled receptor 1 family. Adrenergic receptor subfamily. ADRA2C sub-subfamily.

**SWISS:**

P18825

**Gene ID:**

152

**Database links:**

[Entrez Gene: 152](#) Human

[Entrez Gene: 11553](#) Mouse

[Entrez Gene: 24175](#) Rat

[Omim: 104250](#) Human

[SwissProt: P18825](#) Human

[SwissProt: Q01337](#) Mouse

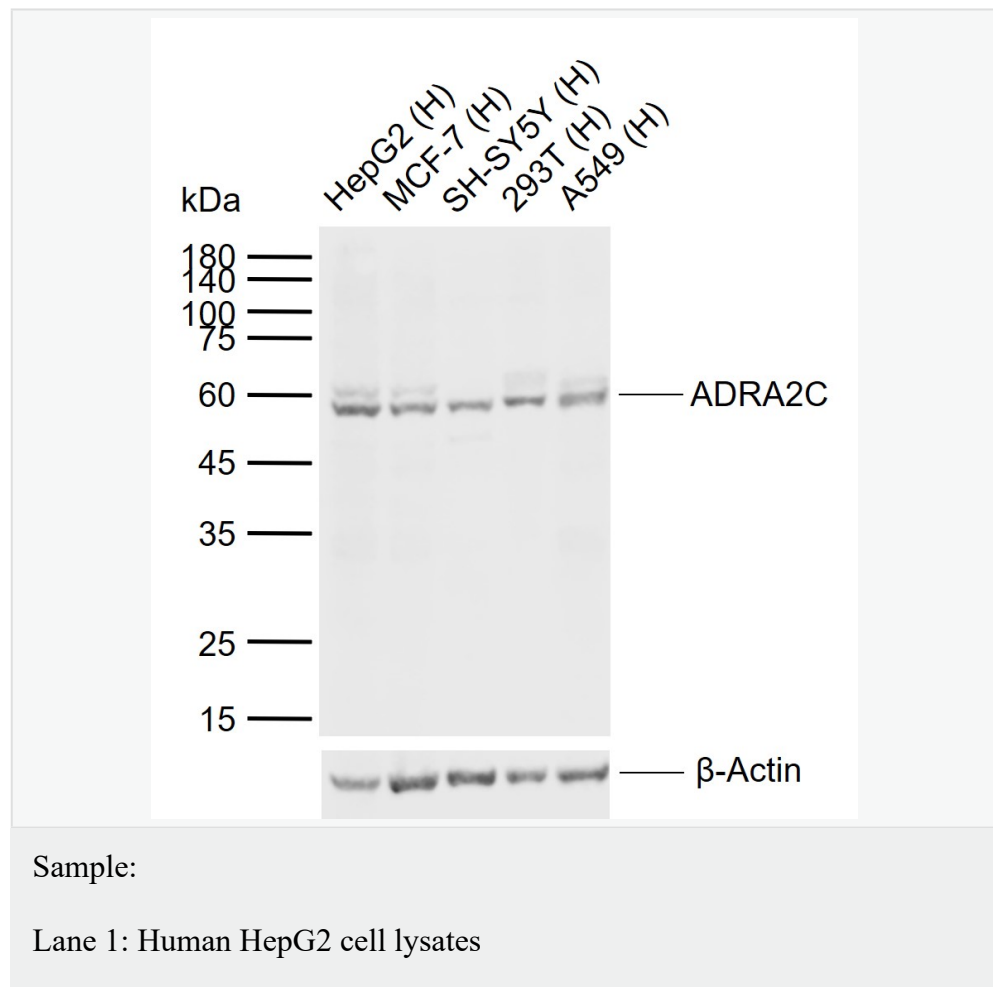
[SwissProt: P22086](#) Rat

[Unigene: 123022](#) Human

[Unigene: 57205](#) Mouse

[Unigene: 10297](#) Rat

**Product Picture**



Lane 2: Human MCF-7 cell lysates

Lane 3: Human SH-SY5Y cell lysate

Lane 4: Human 293T cell lysates

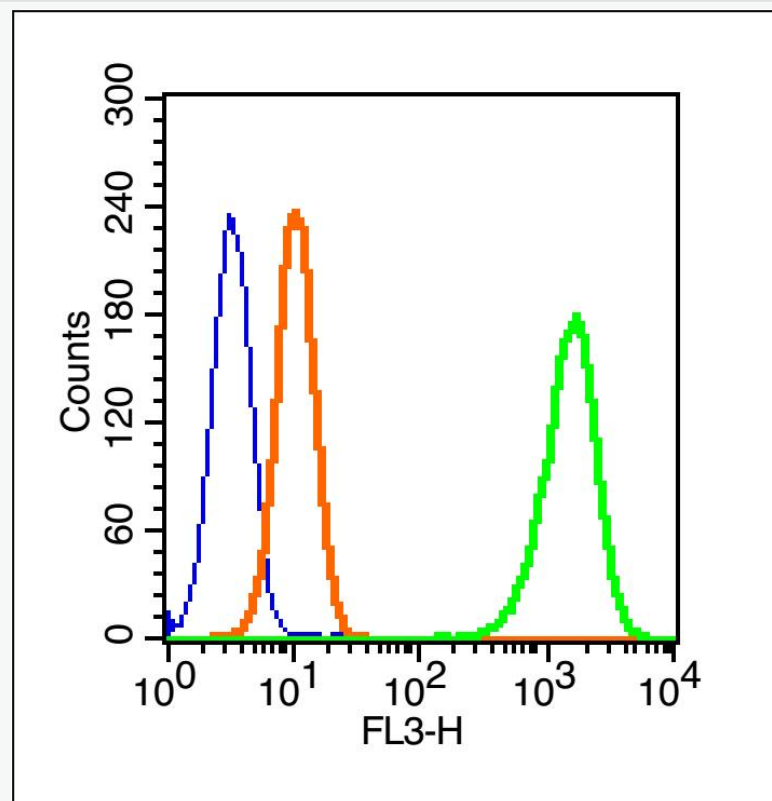
Lane 5: Human A549 cell lysates

Primary: Anti-ADRA2C (SL12040R) at 1/1000 dilution

Secondary: IRDye800CW Goat Anti-Rabbit IgG at 1/20000 dilution

Predicted band size: 49 kDa

Observed band size: 58 kDa



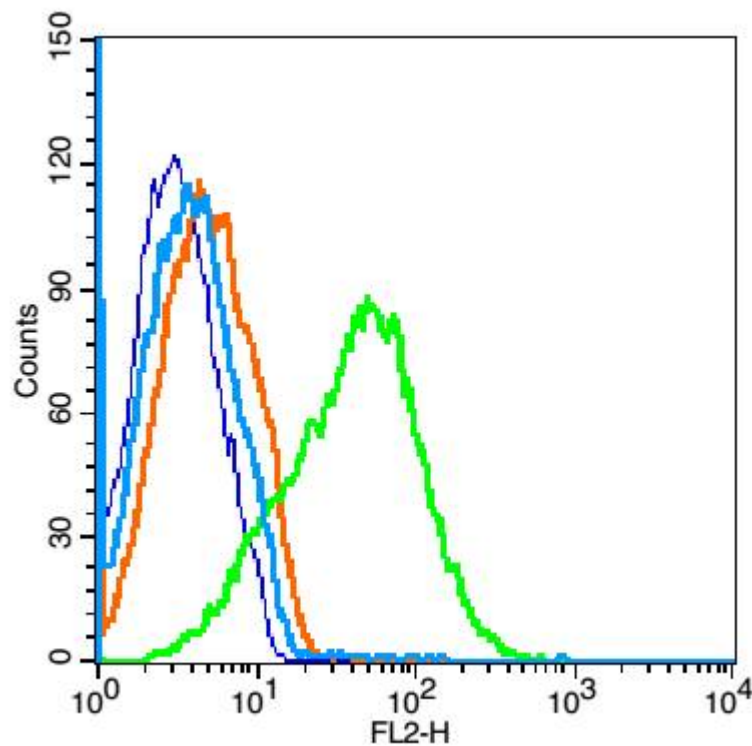
Blank control (blue line): A431(fixed with 70% ice-cold methanol)

overnight at 4°C).

Primary Antibody (green line): Rabbit Anti-ADRA2C/PE-CY5

Conjugated antibody (SL12040R-PE-CY5) ,Dilution: 1µg /10<sup>6</sup> cells;

Isotype Control Antibody (orange line): Rabbit IgG-PE-CY5 .



Blank control(blue):U937 (fixed with 2% paraformaldehyde (10 min)).

Primary Antibody:Rabbit Anti- ADRA2C antibody(SL12040R), Dilution:  
1µg in 100 µL 1X PBS containing 0.5% BSA;

Isotype Control Antibody: Rabbit IgG(orange) ,used under the same  
conditions );

Secondary Antibody: Goat anti-rabbit IgG-PE(white blue), Dilution:



SunLong Biotech Co.,LTD  
Tel: 0086-571-56623320 Fax:0086-571-56623318  
E-mail:sales@sunlongbiotech.com  
www.sunlongbiotech.com

1:200 in 1 X PBS containing 0.5% BSA.