

Rabbit Anti-GPRC5B antibody

SL12029R

Product Name	GPRC5B
Chinese Name	G protein-coupled receptorC5B 抗体
Alias	A 69G12.1; A-69G12.1; G protein coupled receptor family C group 1 member B; G protein coupled receptor family C group 5 member B; G-protein coupled receptor family C group 5 member B; GPC5B_HUMAN; Gprc5b; LOC51704; RAIG-2; RAIG2; Retinoic acid responsive gene protein; Retinoic acid-induced gene 2 protein; GPCR GPRC5B.
Research Area	Neurobiology Signal transduction The cell membrane 受体 G protein-coupled receptor G protein signal
Immunogen Species	Rabbit
Clonality	Polyclonal
React Species	Mouse(predicted:Human,Rat,Dog,Pig,Cow,Horse,Rabbit,Sheep) Flow-Cyt=1μg/Test (Paraffin sections need antigen repair)
Applications	not yet tested in other applications. optimal dilutions/concentrations should be determined by the end user.
Theoretical molecular weight	42kDa
Cellular localization	cytoplasmic The cell membrane
Form	Liquid
Concentration	1mg/ml
immunogen	KLH conjugated synthetic peptide derived from human G protein coupled receptor family C group 1 member B: 1-100/403 <Extracellular>
Lsotype	IgG
Purification	affinity purified by Protein A
Buffer Solution	1M TBS(pH7.4) with 1% BSA, 3% Proclin300 and 50% Glycerol.
Storage	Shipped at 4°C. Store at -20 °C for one year. Avoid repeated freeze/thaw cycles.
Attention	This product as supplied is intended for research use only, not for use in human, therapeutic or diagnostic applications.

PubMed

[PubMed](#)

GPRC5B (G protein-coupled receptor family C group 5 member B, retinoic acid-induced gene 2 protein) is a 403 amino acid protein encoded by the human GPRC5B gene. GPRC5B is an orphan receptor member of the G protein-coupled receptor 3 family. G protein-coupled receptors (GPCRs or GPRs) contain 7 transmembrane domains and transduce extracellular signals through heterotrimeric G proteins. Key roles for G protein-coupled receptors include control of protein maturation and cell surface delivery, and providing the correct framework for interactions with both heterotrimeric G proteins and arrestins to allow signal generation and termination. This retinoic acid-inducible G protein-coupled receptor provides evidence for a possible interaction between retinoid and G protein signaling pathways. GPRC5B is highly expressed in kidney, pancreas and testis, and has moderate expression in brain, heart, prostate, small intestine and spleen.

Function:

Unknown. This retinoic acid-inducible G-protein coupled receptor provide evidence for a possible interaction between retinoid and G-protein signaling pathways.

Subcellular Location:

Cell membrane. Cytoplasmic vesicle membrane. Localized in the plasma membrane and perinuclear vesicles.

Product Detail

Tissue Specificity:

Expression is high in kidney, pancreas, and testis, medium in brain, heart, prostate, small intestine, and spleen, low in liver, placenta, skeletal muscle, colon, ovary, and thymus, and not detectable in lung and peripheral leukocyte. According to PubMed:10945465, highly expressed in most brain areas examined, with the highest levels observed in corpus callosum, caudate nucleus, putamen, substantia nigra, thalamus, hippocampus, and spinal chord as well as in dorsal root ganglia (DRG). In the periphery, expression levels are relatively low, compared to the CNS, with the strongest expression detected in pancreas, testis, uterus, and stomach.

Similarity:

Belongs to the G-protein coupled receptor 3 family.

SWISS:

Q9NZH0

Gene ID:

51704

Database links:

[Entrez Gene: 51704](#) Human

[Entrez Gene: 64297](#) Mouse

[Entrez Gene: 293546](#) Rat

[Omim: 605948](#) Human

[SwissProt: Q9NZH0](#) Human

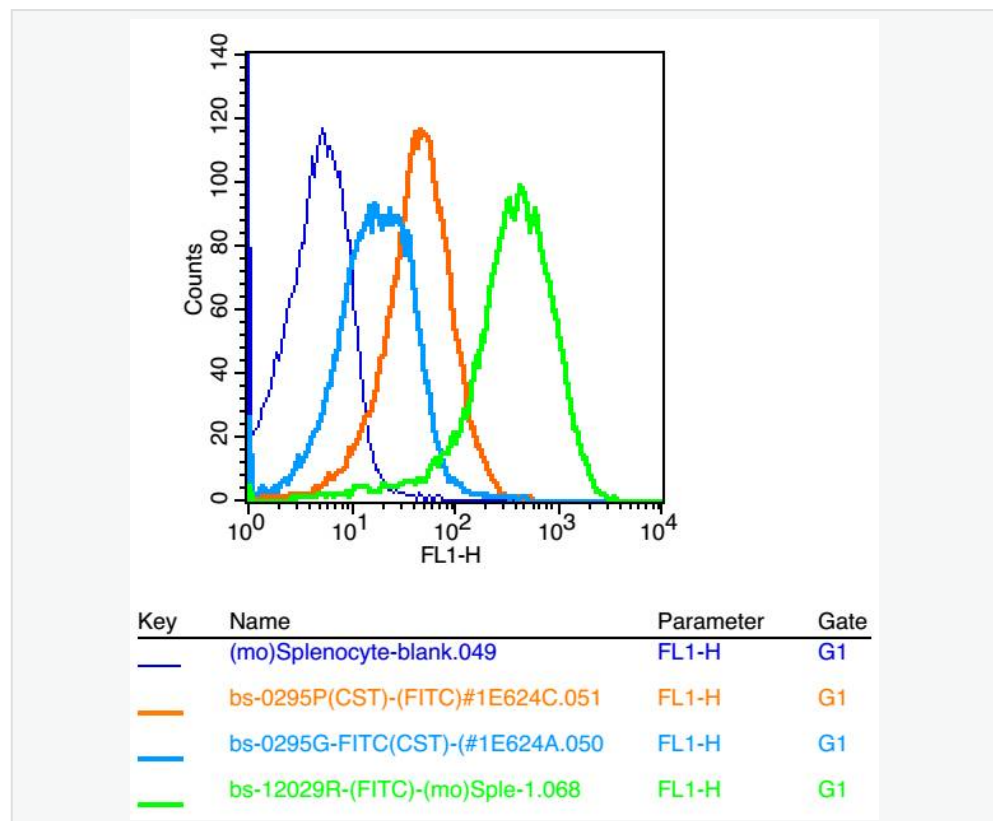
[SwissProt: Q923Z0](#) Mouse

[Unigene: 148685](#) Human

[Unigene: 103439](#) Mouse

[Unigene: 47330](#) Rat

Product Picture



Positive control: (mo)Splenocytes(2% Paraformaldehyde-fixed)

Isotype Control Antibody: Rabbit IgG; Dilution: 1 μ g in 100 μ l 1 X PBS containing 0.5% BSA

Secondary Antibody: Goat anti-rabbit IgG-FITC; Dilution: 1:200 in 1 X PBS containing 0.5% BSA

Primary Antibody: rabbit Anti-GPRC5B (SL12029R); Dilution: 1 μ g in 100 μ l 1X PBS containing 0.5% BSA