

Rabbit Anti-GPR125 antibody

SL12021R

Product Name GPR125

Chinese Name G protein-coupled receptor125 抗体

Alias FLJ38547; G protein coupled receptor 125; PGR21; Probable G protein coupled receptor 125 precursor; TEM5 like; TEM5L; GP125_HUMAN; GPCR125.

Research Area Neurobiology Signal transduction The cell membrane 受体 G protein-coupled receptor G protein signal

Immunogen Species Rabbit

Clonality Polyclonal

React Species Mouse, (predicted: Human, Rat, Dog, Cow, Horse, Sheep,)
WB=1:500-2000,IHC-P=1:100-500,IHC-F=1:100-500,IF=1:100-500,Flow-Cyt=1µg/Test
(Paraffin sections need antigen repair)

Applications not yet tested in other applications.
optimal dilutions/concentrations should be determined by the end user.

Theoretical molecular weight 143kDa

Cellular localization The cell membrane

Form Liquid

Concentration 1mg/ml

immunogen KLH conjugated synthetic peptide derived from human GPR125: 422-530/1321
<Extracellular>

Lsotype IgG

Purification affinity purified by Protein A

Buffer Solution 1M TBS(pH7.4) with 1% BSA, 3% Proclin300 and 50% Glycerol.

Storage Shipped at 4°C. Store at -20 °C for one year. Avoid repeated freeze/thaw cycles.

Attention This product as supplied is intended for research use only, not for use in human, therapeutic or diagnostic applications.

PubMed [PubMed](#)

G protein-coupled receptors (GPRs), also known as seven transmembrane receptors, heptahelical receptors or 7TM receptors, comprise a superfamily of proteins that play a role in many different stimulus-response pathways. G protein coupled receptors translate extracellular signals into intracellular signals (G protein activation) and they respond to a variety of signaling molecules, such as hormones and neurotransmitters. GPR125 (G protein-coupled receptor 125), also known as PGR21 or TEM5L, is a 1,321 amino acid multi-pass membrane protein belonging to the G-protein coupled receptor 2 family and the LN-TM7 subfamily. Considered a novel orphan adhesion-type G-protein-coupled receptor, GPR125 has five leucine rich repeats (LRR), an immunoglobulin (Ig) domain and a GPS domain. GPR125 may play a functional role in choroidal and hippocampal response to brain injury. It is also suggested that GPR125 may be a marker for spermatogonial stem cells. Four isoforms of GPR125 exists due to alternative splicing events.

Function:

GPR125 is an orphan receptor which has a leucine rich repeat (LRR),an immunoglobulin (Ig) domain, and a hormone-binding domain (HBD). The Ig domain shows similarities to motilin and titin, while the LRR domain shows similarities to LRIG1 and SLIT1-2. ESTs have been isolated primarily from amnion,connective tissue, ear, embryo, eye,ganglion, heart, lung,placenta, and skin libraries.

**Product
Detail**

Subunit:

Interacts with DLG1.

Subcellular Location:

Cell membrane; Multi pass membrane protein.

Similarity:

Belongs to the G-protein coupled receptor 2 family. LN-TM7 subfamily.

Contains 1 GPS domain.

Contains 1 Ig-like (immunoglobulin-like) domain.

Contains 5 LRR (leucine-rich) repeats.

Contains 1 LRRCT domain.

SWISS:

Q8IWK6

Gene ID:

166647

Database links:

[Entrez Gene: 166647](#) Human

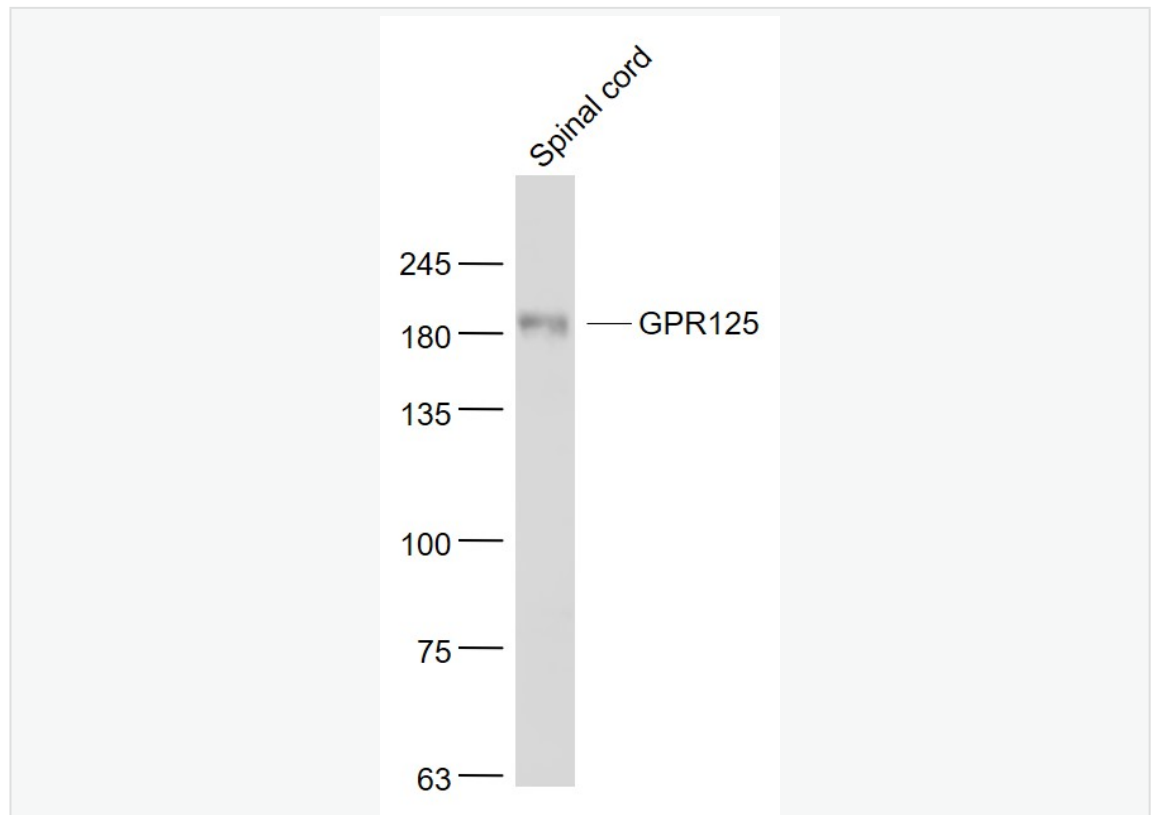
[Entrez Gene: 70693](#) Mouse

[Omid: 612303](#) Human

[SwissProt: Q8IWK6](#) Human

[SwissProt: Q7TT36](#) Mouse

**Product
Picture**



Sample:

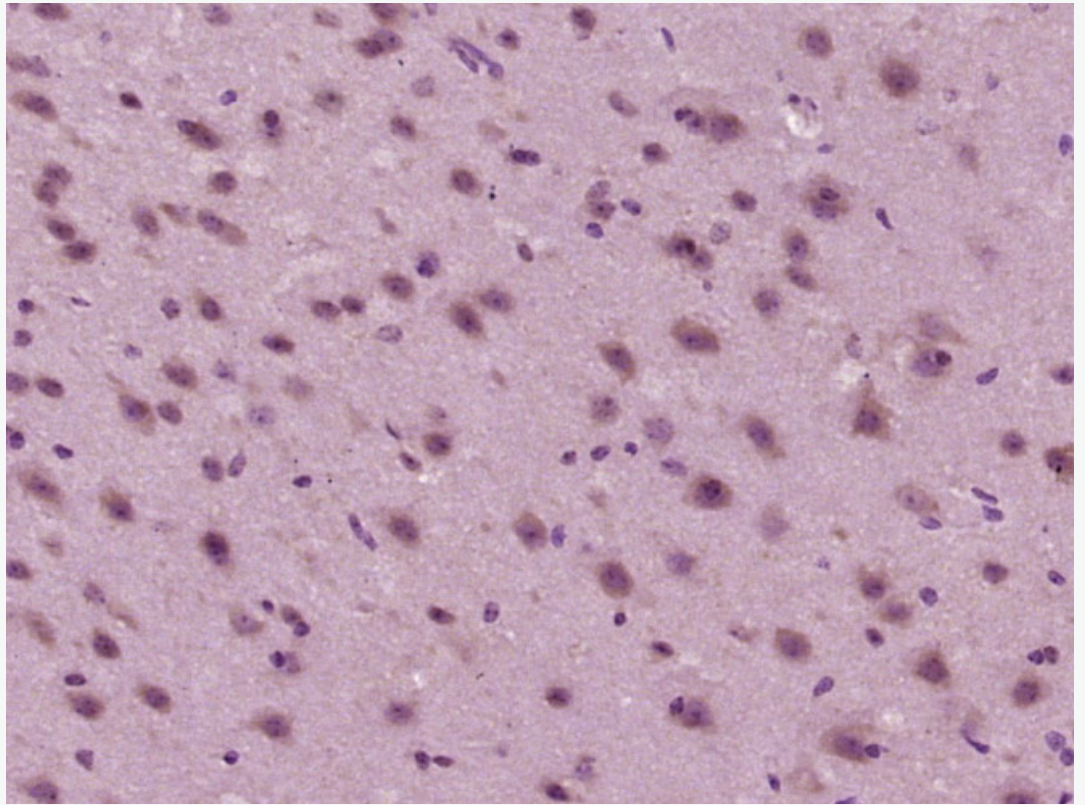
Spinal cord (Mouse) Lysate at 40 ug

Primary: Anti- GPR125 (SL12021R) at 1/1000 dilution

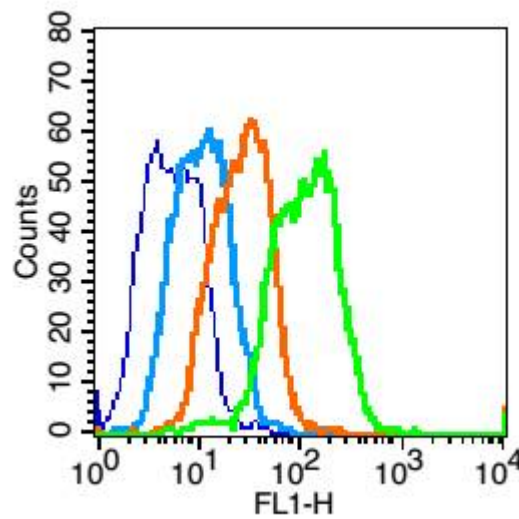
Secondary: IRDye800CW Goat Anti-Rabbit IgG at 1/20000 dilution

Predicted band size: 143 kD

Observed band size: 183 kD



Paraformaldehyde-fixed, paraffin embedded (mouse brain tissue); Antigen retrieval by boiling in sodium citrate buffer (pH6.0) for 15min; Block endogenous peroxidase by 3% hydrogen peroxide for 20 minutes; Blocking buffer (normal goat serum) at 37°C for 30min; Antibody incubation with (GPR125) Polyclonal Antibody, Unconjugated (SL12021R) at 1:400 overnight at 4°C, followed by operating according to SP Kit(Rabbit) (sp-0023) instructions and DAB staining.



Blank control (blue line): Mouse colon (blue).

Primary Antibody (green line): Rabbit Anti-GPR125 antibody (SL12021R)

Dilution: $1\mu\text{g}/10^6$ cells;

Isotype Control Antibody (orange line): Rabbit IgG .

Secondary Antibody (white blue line): F(ab')₂ fragment goat anti-rabbit IgG-FITC

Dilution: $1\mu\text{g}/\text{test}$.

Protocol

The cells were fixed with 2% paraformaldehyde for 10 min at room temperature. Cells stained with Primary Antibody for 30 min at room temperature. The cells were then incubated in 1 X PBS/2%BSA/10% goat serum to block non-specific protein-protein interactions followed by the antibody for 15 min at room temperature. The secondary antibody used for 40 min at room temperature. Acquisition of 20,000 events was performed.



SunLong Biotech Co.,LTD
Tel: 0086-571-56623320 Fax:0086-571-56623318
E-mail:sales@sunlongbiotech.com
www.sunlongbiotech.com
