

Rabbit Anti-GPR18 antibody

SL12015R

Product Name GPR18

Chinese Name G protein-coupled receptor18 抗体

Alias G protein coupled receptor 18; G-protein coupled receptor 18GPCRW; GPR 18; GPR18; N arachidonyl glycine receptor; NAGly receptor; GPR18_HUMAN; GPCR18.

Research Area Cell biology Neurobiology Signal transduction The cell membrane 受体 G protein-coupled receptor G protein signal

Immunogen Species Rabbit

Clonality Polyclonal

React Species Human(predicted:Mouse,Rat,Pig,Horse,Rabbit)

Applications IHC-P=1:100-500,IHC-F=1:100-500,IF=1:100-500 (Paraffin sections need antigen repair)
not yet tested in other applications.
optimal dilutions/concentrations should be determined by the end user.

Theoretical molecular weight 38kDa

Cellular localization The cell membrane

Form Liquid

Concentration 1mg/ml

immunogen KLH conjugated synthetic peptide derived from human G protein coupled receptor 18: 131-230/331 <Extracellular>

Lsotype IgG

Purification affinity purified by Protein A

Buffer Solution 1M TBS(pH7.4) with 1% BSA, 3% Proclin300 and 50% Glycerol.

Storage Shipped at 4°C. Store at -20 °C for one year. Avoid repeated freeze/thaw cycles.

Attention This product as supplied is intended for research use only, not for use in human, therapeutic or diagnostic applications.

PubMed

[PubMed](#)

G protein-coupled receptors (GPRs), also known as seven transmembrane receptors, heptahelical receptors or 7TM receptors, comprise a superfamily of proteins that play a role in many different stimulus-response pathways. G protein coupled receptors translate extracellular signals into intracellular signals (G protein activation) and they respond to a variety of signaling molecules, such as hormones and neurotransmitters. GPR18 (G protein-coupled receptor 18), also known as GPCRW, is a 331 amino acid multi-pass membrane protein that belongs to the G-protein coupled receptor family. Expressed abundantly in spleen and testis, GPR18 functions as a receptor for N-arachidonyl glycine and is thought to contribute to the regulation of the immune system. GPR18 activity is mediated by G proteins that specifically inhibit adenylyl cyclase.

Function:

G protein coupled receptors (GPCRs, or GPRs) contain 7 transmembrane domains and transduce extracellular signals through heterotrimeric G proteins. GPCR GPR18 is a member of this family and has been reported to be expressed at high levels in testis and spleen and at lower levels in other tissues associated with endocrine and immunologic/hematologic functions. It is thought to be a receptor for N arachidonyl glycine. It may contribute to regulation of the immune system.

Product Detail

Subcellular Location:

Cell membrane; Multi-pass membrane protein.

Tissue Specificity:

Most abundant in testis and spleen. Highly expressed in CD4 and CD8-positive T-cells as well as CD19-positive B-cells.

Similarity:

Belongs to the G-protein coupled receptor 1 family.

SWISS:

Q14330

Gene ID:

2841

Database links:

[Entrez Gene: 2841](#) Human

[Entrez Gene: 110168](#) Mouse

[Entrez Gene: 679957](#) Rat

[Omim: 602042](#) Human

[SwissProt: Q14330](#) Human

[SwissProt: Q8K1Z6](#) Mouse

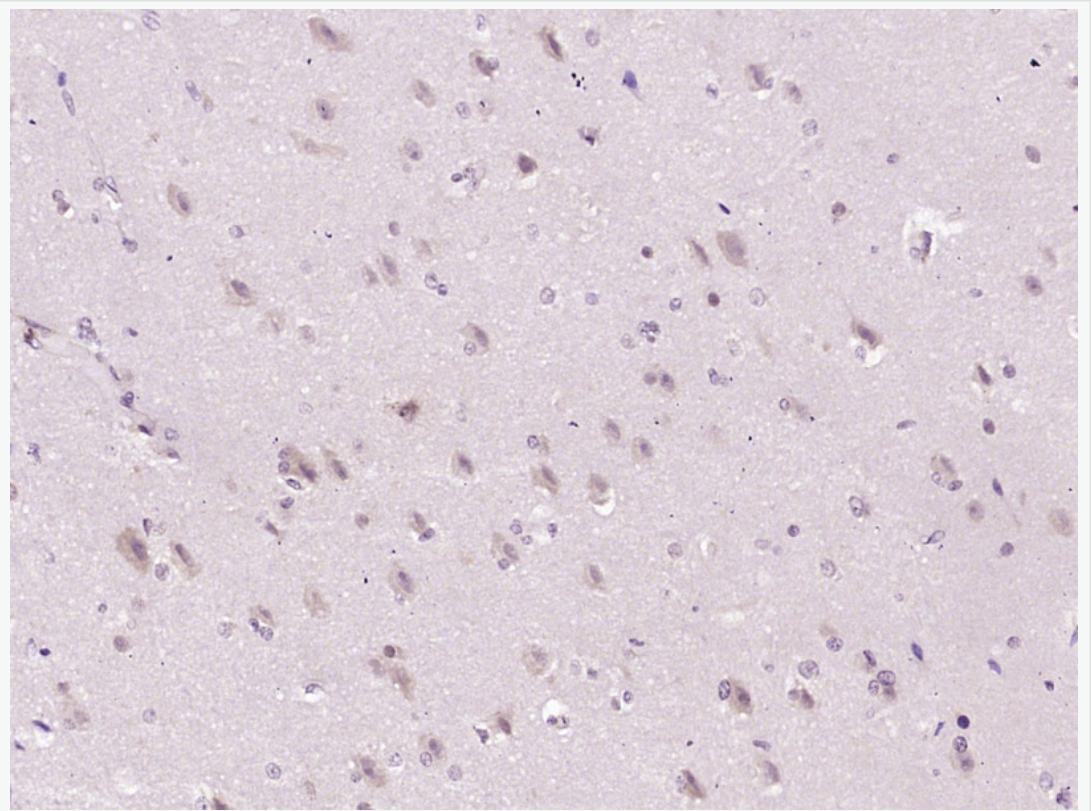
[SwissProt: A1A5S3](#) Rat

[Unigene: 741589](#) Human

[Unigene: 37405](#) Mouse

[Unigene: 205907](#) Rat

**Product
Picture**



Paraformaldehyde-fixed, paraffin embedded (Human brain glioma); Antigen retrieval by boiling in sodium citrate buffer (pH6.0) for 15min; Block endogenous peroxidase by 3% hydrogen peroxide for 20 minutes; Blocking buffer (normal goat serum) at 37°C for 30min; Antibody incubation with (GPR18) Polyclonal



SunLong Biotech Co.,LTD
Tel: 0086-571-56623320 Fax:0086-571-56623318
E-mail:sales@sunlongbiotech.com
www.sunlongbiotech.com

Antibody, Unconjugated (SL12015R) at 1:400 overnight at 4°C, followed by operating according to SP Kit(Rabbit) (sp-0023) instructions and DAB staining.