

Rabbit Anti-AKAP7 antibody

SL11999R

Product Name AKAP7

Chinese Name 蛋白激酶 A 锚定蛋白 7 抗体

Alias A kinase (PRKA) anchor protein 7; A kinase anchor protein 18 kD; A Kinase Anchor Protein 7; A Kinase Anchor Protein 7 Isoform Alpha; A kinase anchor protein 7 isoform beta; A kinase anchor protein 7 isoform gamma; A kinase anchor protein 7 isoforms alpha and beta; A kinase anchor protein 9 kDa; A Kinase Anchoring Protein 18; A-kinase anchor protein 18 kDa; A-kinase anchor protein 7 isoforms alpha and beta; AKA7A_HUMAN; AKAP 18; AKAP 7; AKAP-7 isoforms alpha and beta; AKAP15; AKAP18; Akap7; HGNC377; OTTHUMP00000040266; Protein kinase A anchoring protein 7; Protein kinase A anchoring protein 7 isoform alpha; Protein kinase A anchoring protein 7 isoform beta; Protein kinase A anchoring protein 7 isoform gamma; Protein kinase A anchoring protein 7 isoforms alpha/beta; Protein kinase A-anchoring protein 7 isoforms alpha/beta.

Research Area Cell biology Neurobiology Signal transduction Kinases and Phosphatases

Immunogen Species Rabbit

Clonality Polyclonal

React Species Human,Rat(predicted:Mouse,Pig,Horse,Sheep)

Applications IHC-P=1:100-500,IHC-F=1:100-500,IF=1:100-500 (Paraffin sections need antigen repair)

not yet tested in other applications.

optimal dilutions/concentrations should be determined by the end user.

Theoretical molecular weight 11.3kDa

Cellular localization The nucleus cytoplasmic The cell membrane

Form Liquid

Concentration 1mg/ml

immunogen KLH conjugated synthetic peptide derived from human AKAP7: 31-80/104

Lsotype IgG



Purification	affinity purified by Protein A
Buffer Solution	1M TBS(pH7.4) with 1% BSA, 3% Proclin300 and 50% Glycerol.
Storage	Shipped at 4°C. Store at -20 °C for one year. Avoid repeated freeze/thaw cycles.
Attention	This product as supplied is intended for research use only, not for use in human, therapeutic or diagnostic applications.
PubMed	PubMed A kinase (PRKA) anchor protein 7; A kinase anchor protein 18 kD; A Kinase Anchor Protein 7; A Kinase Anchor Protein 7 Isoform Alpha; A kinase anchor protein 7 isoform beta; A kinase anchor protein 7 isoform gamma; A kinase anchor protein 7 isoforms alpha and beta; A kinase anchor protein 9 kDa; A Kinase Anchoring Protein 18; A-kinase anchor protein 18 kDa; A-kinase anchor protein 7 isoforms alpha and beta; AKA7A_HUMAN; AKAP 18; AKAP 7; AKAP-7 isoforms alpha and beta; AKAP15; AKAP18; Akap7; HGNC377; OTTHUMP00000040266; Protein kinase A anchoring protein 7; Protein kinase A anchoring protein 7 isoform alpha; Protein kinase A anchoring protein 7 isoform beta; Protein kinase A anchoring protein 7 isoform gamma; Protein kinase A anchoring protein 7 isoforms alpha/beta; Protein kinase A-anchoring protein 7 isoforms alpha/beta. Function: Targets the cAMP-dependent protein kinase (PKA) to the plasma membrane, and permits functional coupling to the L-type calcium channel.
Product Detail	Subunit: Binds cAMP-dependent protein kinase (PKA). Interacts with PRKCA; only the cytoplasmic form is capable of interacting with PRKCA. Subcellular Location: Apical cell membrane. Targeted predominantly to the apical membrane and Lateral cell membrane. Targeted predominantly to the lateral membrane. Tissue Specificity: Expressed in brain, heart, lung, pancreas and skeletal muscle. SWISS: O43687 Gene ID: 9465 Database links:

[Entrez Gene: 9465](#) Human

[Entrez Gene: 432442](#) Mouse

[Entrez Gene: 361458](#) Rat

[Omim: 604693](#) Human

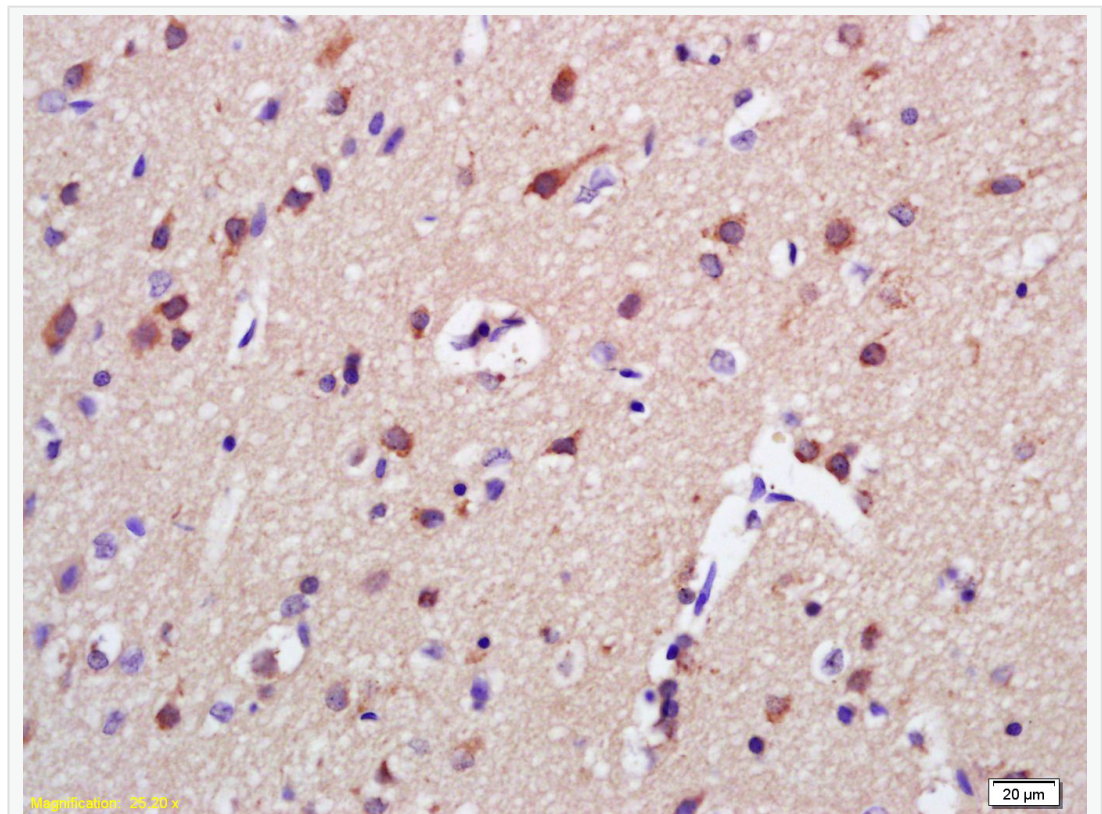
[SwissProt: O43687](#) Human

[SwissProt: Q9P0M2](#) Human

[SwissProt: O55074](#) Mouse

[SwissProt: Q6JP77](#) Rat

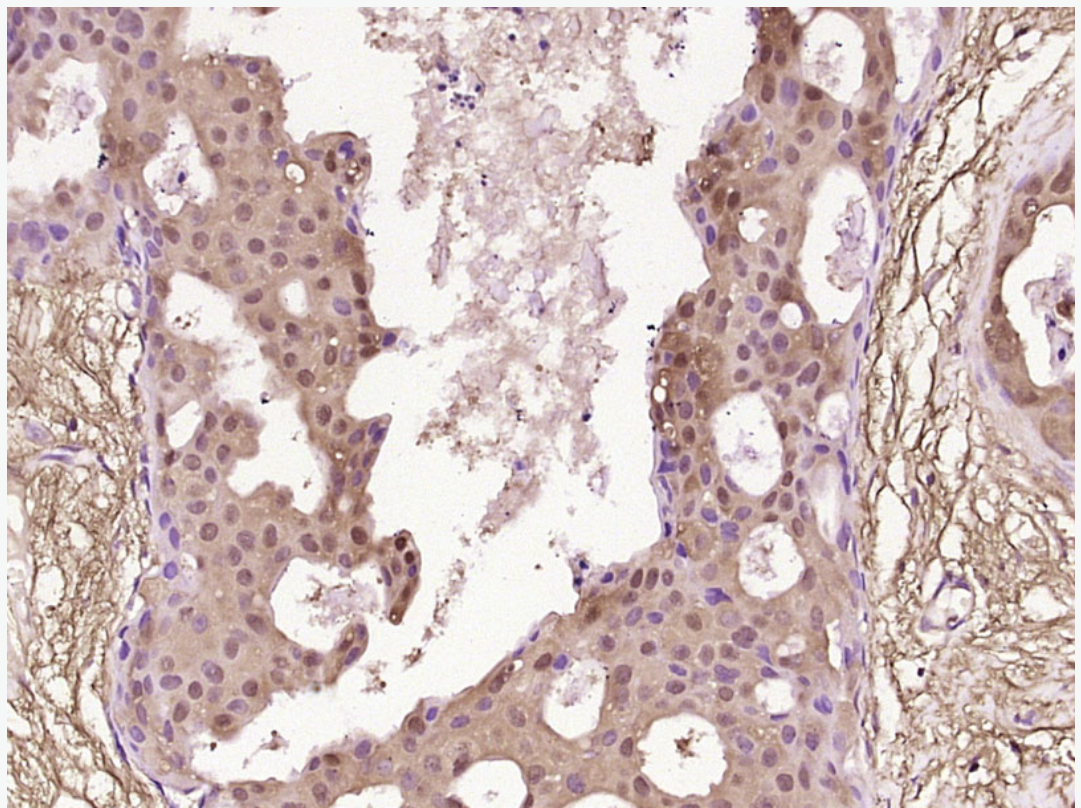
Product Picture



Tissue/cell: rat brain tissue; 4% Paraformaldehyde-fixed and paraffin-embedded;
Antigen retrieval: citrate buffer (1M, pH 6.0), Boiling bathing for 15min; Block
endogenous peroxidase by 3% Hydrogen peroxide for 30min; Blocking buffer

(normal goat serum,C-0005) at 37°C for 20 min;

Incubation: Anti-AKAP7 Polyclonal Antibody, Unconjugated(SL11999R) 1:200, overnight at 4°C, followed by conjugation to the secondary antibody(SP-0023) and DAB(C-0010) staining



Paraformaldehyde-fixed, paraffin embedded (Human breast carcinoma); Antigen retrieval by boiling in sodium citrate buffer (pH6.0) for 15min; Block endogenous peroxidase by 3% hydrogen peroxide for 20 minutes; Blocking buffer (normal goat serum) at 37°C for 30min; Antibody incubation with (AKAP7) Polyclonal Antibody, Unconjugated (SL11999R) at 1:400 overnight at 4°C, followed by



SunLong Biotech Co.,LTD
Tel: 0086-571-56623320 Fax:0086-571-56623318
E-mail:sales@sunlongbiotech.com
www.sunlongbiotech.com

operating according to SP Kit(Rabbit) (sp-0023) instructions and DAB staining.