

Rabbit Anti-PPP2R5D antibody

SL11992R

Product Name PPP2R5D

Chinese Name 蛋白质磷酸酶 2 调节亚基 5D/PP2A-B56- δ 抗体

Alias B'delta; Delta isoform of regulatory subunit B56, protein phosphatase 2A; MGC2134; MGC8949; OTTHUMP00000039821; PP2A B subunit B' delta isoform; PP2A B subunit B56 delta isoform; PP2A B subunit PR61 delta isoform; PP2A B subunit R5 delta isoform; Protein phosphatase 2 regulatory subunit B (B56) delta isoform; Protein phosphatase 2 regulatory subunit B delta isoform; Serine threonine protein phosphatase 2A 56 kDa regulatory subunit delta isoform; TEG-271; Tex271; 2A5D_HUMAN.

Research Area Cell biology Neurobiology Signal transduction Kinases and Phosphatases

Immunogen Species Rabbit

Clonality Polyclonal

React Species Mouse,Rat(predicted:Human,Cow)

Applications WB=1:500-2000,IHC-P=1:100-500,IHC-F=1:100-500,IF=1:100-500 (Paraffin sections need antigen repair)
not yet tested in other applications.
optimal dilutions/concentrations should be determined by the end user.

Theoretical molecular weight 70kDa

Cellular localization cytoplasmic

Form Liquid

Concentration 1mg/ml

immunogen KLH conjugated synthetic peptide derived from human PPP2R5D: 501-602/602

Lsotype IgG

Purification affinity purified by Protein A

Buffer Solution Mouse,Rat(predicted:Human,Cow)1M TBS(pH7.4) with 1% BSA,

Mouse,Rat(predicted:Human,Cow)3% Proclin300 and 50% Glycerol.

Storage Shipped at 4°C. Store at -20 °C for one year. Avoid repeated freeze/thaw cycles.

Attention

This product as supplied is intended for research use only, not for use in human, therapeutic or diagnostic applications.

PubMed

[PubMed](#)

In eukaryotes, the phosphorylation and dephosphorylation of proteins on serine and threonine residues is an essential means of regulating a broad range of cellular functions, including division, homeostasis and apoptosis. A group of proteins that are intimately involved in this process are the protein phosphatases. In general, the protein phosphatase (PP) holoenzyme is a trimeric complex composed of a regulatory subunit, a variable subunit, and a catalytic subunit. Four major families of protein phosphatase catalytic subunits have been identified, designated PP1, PP2A, PP2B (calcineurin) and PP2C. An additional protein phosphatase catalytic subunit, PPX (also known as PP4) is a putative member of a novel PP family. The PP2A family comprises subfamily members PP2A Alpha and PP2A Beta. The PP2A catalytic subunit associates with a variety of regulatory subunits. Regulatory subunits include PP2A-A-Alpha and -A-Beta, PP2A-B-Alpha and -B-Beta, PP2A-C-Alpha and -C-Beta, PP2A-B56-Alpha, -B56-Beta, -B56-gamma and -B56-Delta.

Function:

PPP2R5D is one of the four major Ser/Thr phosphatases, and it is implicated in the negative control of cell growth and division. It consists of a common heteromeric core enzyme, which is composed of a catalytic subunit and a constant regulatory subunit, that associates with a variety of regulatory subunits.

Product Detail

Subunit:

PP2A consists of a common heterodimeric core enzyme, composed of a 36 kDa catalytic subunit (subunit C) and a 65 kDa constant regulatory subunit (PR65 or subunit A), that associates with a variety of regulatory subunits. Proteins that associate with the core dimer include three families of regulatory subunits B (the R2/B/PR55/B55, R3/B"/PR72/PR130/PR59 and R5/B'/B56 families), the 48 kDa variable regulatory subunit, viral proteins, and cell signaling molecules. Interacts with SGOL1.

Subcellular Location:

Cytoplasmic and nuclear in interphase, nuclear during mitosis

Tissue Specificity:

Isoform Delta-2 is widely expressed. Isoform Delta-1 is highly expressed in brain.

Post-translational modifications:

Phosphorylated upon DNA damage, probably by ATM or ATR.

Similarity:

Belongs to the phosphatase 2A regulatory subunit B56 family.



SWISS:
Q14738

Gene ID:
5528

Database links:

[Entrez Gene: 5528](#) Human

[Entrez Gene: 21770](#) Mouse

[Entrez Gene: 363193](#) Rat

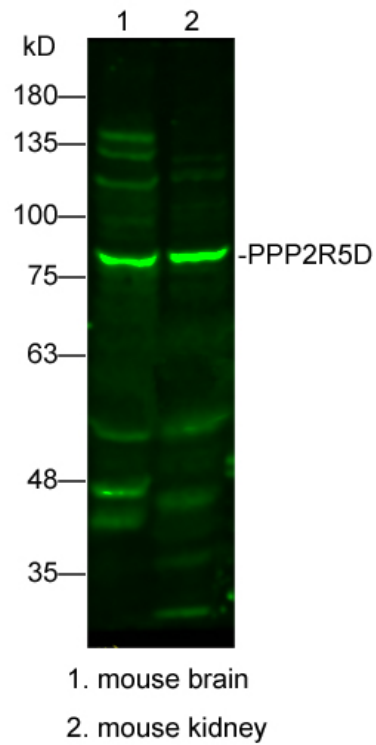
[Omim: 601646](#) Human

[SwissProt: Q14738](#) Human

[Unigene: 533308](#) Human

[Unigene: 295009](#) Mouse

**Product
Picture**



Sample:

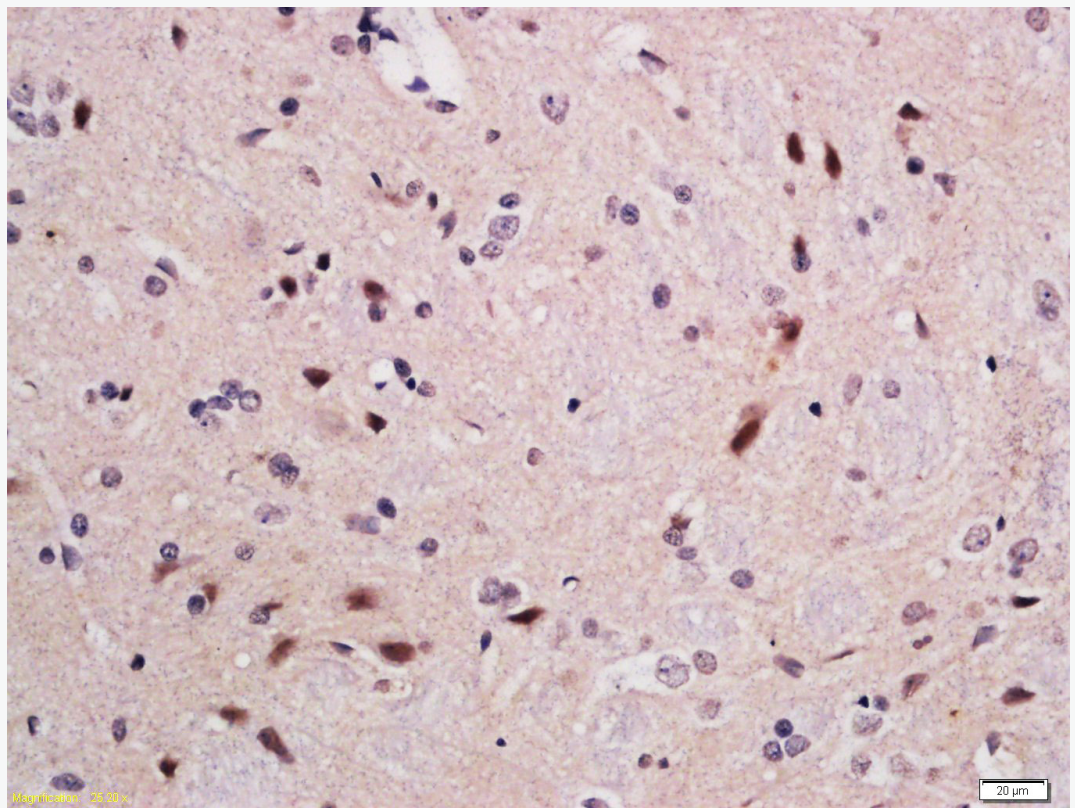
Lane1: mouse brain Lysate at 25 ug

Lane2: mouse kidney Lysate at 25 ug

Primary: Anti-PPP2R5D(SL11992R) at 1/300 dilution

Secondary: IRDye800CW Goat Anti-Rabbit IgG at 1/20000 dilution

Predicted band size: 70kD Observed band size: 78kD



Tissue/cell: rat brain tissue; 4% Paraformaldehyde-fixed and paraffin-embedded;
Antigen retrieval: citrate buffer (Mouse,Rat(predicted:Human,Cow)1M, pH 6.0),
Boiling bathing for 15min; Block endogenous peroxidase by 3% Hydrogen
peroxide for 30min; Blocking buffer (normal goat serum,C-0005) at 37°C for 20
min;

Incubation: Anti-PPP2R5D Polyclonal Antibody, Unconjugated(SL11992R)
1:200, overnight at 4°C, followed by conjugation to the secondary
antibody(SP-0023) and DAB(C-0010) staining