

## Rabbit Anti-Creatine kinase B type antibody

SL11989R

<b>Product Name</b>	Creatine kinase B type
<b>Chinese Name</b>	脑肌酸激酶 BCK 抗体
<b>Alias</b>	B CK; B CK; B-CK; BB-CK; BCK; Brain creatine kinase; Ckb; CKBB; CK-BB; Creatine kinase B; Creatine kinase B chain; Creatine kinase B-type; Creatine Kinase BB Isoenzyme; Creatine Kinase BB Isoenzyme; Creatine Kinase BB Isoenzyme; Creatine kinase brain; Creatine phosphokinase BB; KCRB_HUMAN. Creatine Kinase MB
<b>Research Area</b>	Tumour Cell biology Neurobiology Signal transduction Kinases and Phosphatases
<b>Immunogen Species</b>	Rabbit
<b>Clonality</b>	Polyclonal
<b>React Species</b>	Rat(predicted:Human,Mouse,Chicken,Cow,Sheep)
<b>Applications</b>	Flow-Cyt=1 $\mu$ g/Test (Paraffin sections need antigen repair) not yet tested in other applications. optimal dilutions/concentrations should be determined by the end user.
<b>Theoretical molecular weight</b>	43kDa
<b>Cellular localization</b>	cytoplasmic
<b>Form</b>	Liquid
<b>Concentration</b>	1mg/ml
<b>immunogen</b>	KLH conjugated synthetic peptide derived from human Creatine kinase B type: 234-280/381
<b>Lsotype</b>	IgG
<b>Purification</b>	affinity purified by Protein A
<b>Buffer Solution</b>	1M TBS(pH7.4) with 1% BSA, 3% Proclin300 and 50% Glycerol.
<b>Storage</b>	Shipped at 4°C. Store at -20 °C for one year. Avoid repeated freeze/thaw cycles.
<b>Attention</b>	This product as supplied is intended for research use only, not for use in human, therapeutic or diagnostic applications.

## PubMed

### [PubMed](#)

The protein encoded by this gene is a cytoplasmic enzyme involved in energy homeostasis. The encoded protein reversibly catalyzes the transfer of phosphate between ATP and various phosphagens such as creatine phosphate. It acts as a homodimer in brain as well as in other tissues, and as a heterodimer with a similar muscle isozyme in heart. The encoded protein is a member of the ATP:guanido phosphotransferase protein family. A pseudogene of this gene has been characterized. [provided by RefSeq, Jul 2008]

#### **Function:**

Reversibly catalyzes the transfer of phosphate between ATP and various phosphagens (e.g. creatine phosphate). Creatine kinase isoenzymes play a central role in energy transduction in tissues with large, fluctuating energy demands, such as skeletal muscle, heart, brain and spermatozoa.

#### **Subunit:**

Dimer of identical or non-identical chains. With MM being the major form in skeletal muscle and myocardium, MB existing in myocardium, and BB existing in many tissues, especially brain.

#### **Subcellular Location:**

Cytoplasm.

## Product Detail

#### **Similarity:**

Belongs to the ATP:guanido phosphotransferase family.

Contains 1 phosphagen kinase C-terminal domain.

Contains 1 phosphagen kinase N-terminal domain.

#### **SWISS:**

P12277

#### **Gene ID:**

1152

#### **Database links:**

[Entrez Gene: 1152](#) Human

[Entrez Gene: 12709](#) Mouse

[Entrez Gene: 24264](#) Rat

[Omim: 123280](#) Human

[SwissProt: P12277](#) Human

[SwissProt: Q04447](#) Mouse

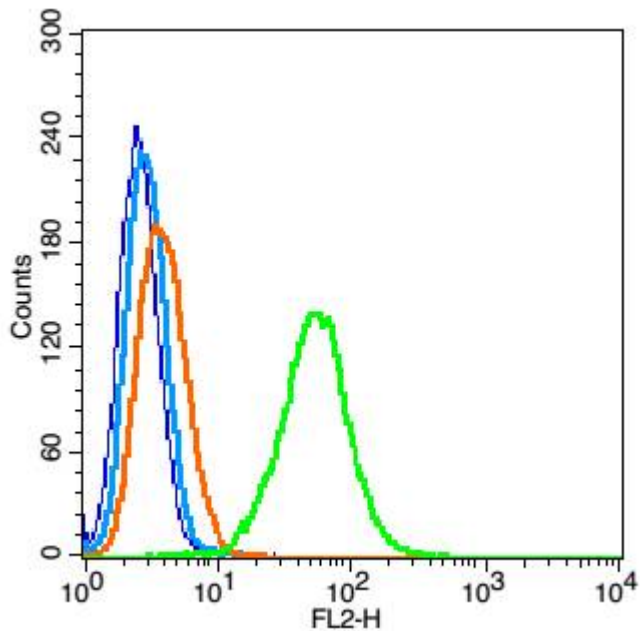
[SwissProt: P07335](#) Rat

[Unigene: 173724](#) Human

[Unigene: 16831](#) Mouse

[Unigene: 1472](#) Rat

### Product Picture



Blank control: RSC96(blue), the cells were fixed with 2% paraformaldehyde (10 min) and then permeabilized with ice-cold 90% methanol for 30 min on ice..

Isotype Control Antibody: Rabbit IgG(orange) ; Secondary Antibody:

Goat anti-rabbit IgG-FITC(white blue), Dilution: 1:100 in 1 X PBS

containing 0.5% BSA ; Primary Antibody Dilution: 1 $\mu$ g in 100  $\mu$ L1X PBS



SunLong Biotech Co.,LTD  
Tel: 0086-571-56623320 Fax:0086-571-56623318  
E-mail:sales@sunlongbiotech.com  
www.sunlongbiotech.com

---

containing 0.5% BSA(green).