

## Rabbit Anti-SORCS2 antibody

SL11963R

<b>Product Name</b>	SORCS2
<b>Chinese Name</b>	液泡蛋白分选受体 SORCS2 抗体
<b>Alias</b>	KIAA1329; SORCS 2; Sortilin related VPS10 domain containing receptor 2; VPS10 domain receptor protein; VPS10 domain receptor protein SORCS 2; SORC2_HUMAN.
<b>Research Area</b>	Cell biology Neurobiology The cell membrane 受体
<b>Immunogen Species</b>	Rabbit
<b>Clonality</b>	Polyclonal
<b>React Species</b>	Human(predicted:Mouse,Rat)
<b>Applications</b>	WB=1:500-2000 (Paraffin sections need antigen repair) not yet tested in other applications. optimal dilutions/concentrations should be determined by the end user.
<b>Theoretical molecular weight</b>	123kDa
<b>Cellular localization</b>	The cell membrane
<b>Form</b>	Liquid
<b>Concentration</b>	1mg/ml
<b>immunogen</b>	KLH conjugated synthetic peptide derived from human SORCS2: 201-300/1159
<b>Lsotype</b>	IgG
<b>Purification</b>	affinity purified by Protein A
<b>Buffer Solution</b>	1M TBS(pH7.4) with 1% BSA, 3% Proclin300 and 50% Glycerol.
<b>Storage</b>	Shipped at 4°C. Store at -20 °C for one year. Avoid repeated freeze/thaw cycles.
<b>Attention</b>	This product as supplied is intended for research use only, not for use in human, therapeutic or diagnostic applications.
<b>PubMed</b>	<a href="#">PubMed</a>
<b>Product Detail</b>	There are three SorCS genes that have diverse, partially overlapping functions in the central nervous system. In the developing and mature central nervous

system, SorCS1, SorCS2 and SorCS3 genes are expressed in a combinatorial, non-overlapping pattern. SorCS proteins show homology to the mosaic receptor SorLA and the neurotensin receptor sortilin, based on a common VPS10 domain, which is the hallmark of the SorCS receptor family. SorCS2 (sortilin-related VPS10 domain containing receptor 2) is a 1,150 amino acid single-pass type I membrane protein that is highly expressed in brain and kidney. Containing six BNR repeats and a single PKD domain, SorCS2 is encoded by a gene that maps to human chromosome 4, which encodes nearly 6% of the human genome and has the largest gene deserts (regions of the genome with no protein encoding genes) of all of the human chromosomes.

**Function:**

SORCS2 is a member of the vacuolar protein sorting 10 (VPS10) domain containing receptor protein family. The VPS10 domain name comes from the yeast carboxypeptidase Y sorting receptor Vps10 protein. These proteins are strongly expressed in the central nervous system.

**Subcellular Location:**

Membrane; Single pass type I membrane protein.

**Tissue Specificity:**

Highly expressed in brain and kidney. Detected at low levels in heart, liver, small intestine, skeletal muscle and thymus.

**Similarity:**

Belongs to the VPS10-related sortilin family. SORCS subfamily.

Contains 6 BNR repeats.

Contains 1 PKD domain.

**SWISS:**

Q96PQ0

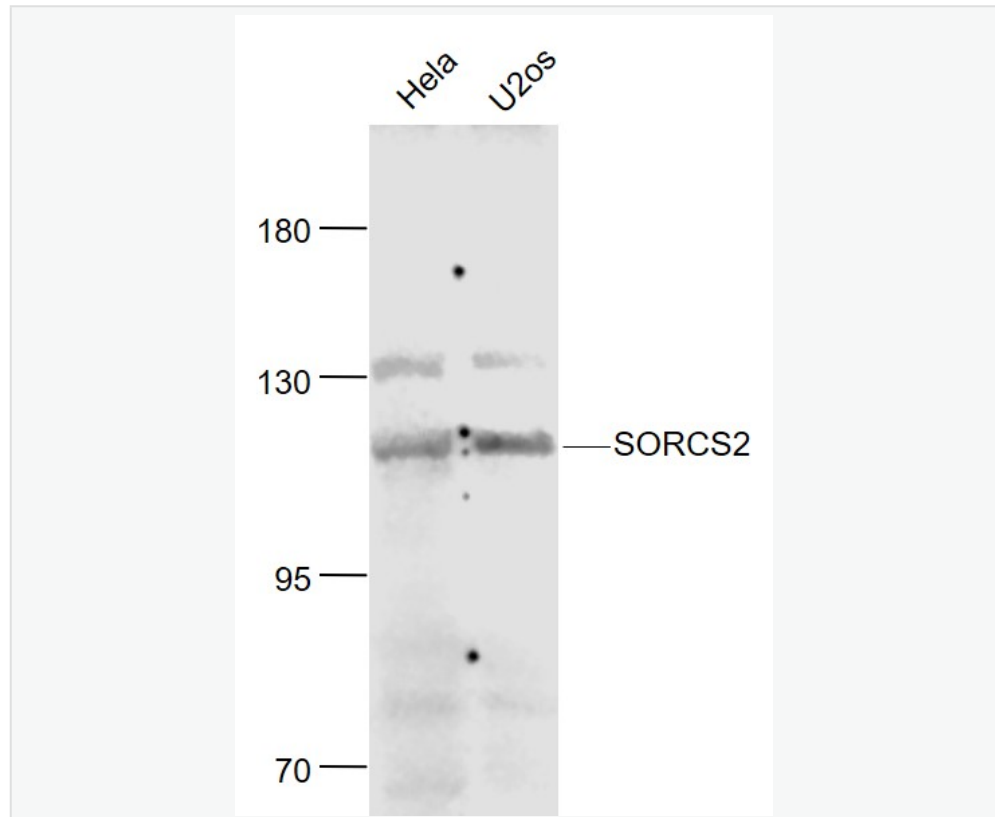
**Gene ID:**

57537

**Database links:**

UniProtKB/Swiss-Prot: Q96PQ0.3

**Product Picture**



**Sample:**

HeLa(Human) Cell Lysate at 30 ug

U2os(Human) Cell Lysate at 30 ug

Primary: Anti- SORCS2 (SL11963R) at 1/1000 dilution

Secondary: IRDye800CW Goat Anti-Rabbit IgG at 1/20000 dilution

Predicted band size: 123 kD

Observed band size: 123 kD